



SolarMax Pro Energy Storage Systems

What size inverter should I use for a 550w solar panel





Overview

Here's how inverter sizes usually correlate: Panels: 3,000 – 6,000 W Inverter: 3,000 W to 5,500 W Panels: 6,000 – 10,000 W Inverter: 5,500 W to 8,000 W (some size down to 5 kW depending on shading) Panels: 10,000 – 20,000 W Inverter: one or two inverters of a combined 10 kW–15 kW What size solar inverter do I Need?

A 4.5 kW array (or ten 450-watt solar panels) would just about cover your consumption. The type of solar panels you choose can also impact the size of the inverter you need. Different types of solar panels have different wattage ratings and efficiency levels. The three main types of solar panels are monocrystalline, polycrystalline, and thin film.

What is a solar inverter sizing calculator?

A solar inverter sizing calculator is a tool used to determine the appropriate size of a solar inverter for your solar power system based on the total power consumption of connected appliances and the size of your solar panel array. It ensures the inverter can handle the peak loads efficiently.

How many kW can a solar inverter generate?

Total capacity = $20 \times 500 = 10,000$ watts or 10 kW The industry standard suggests that the inverter's capacity should be between 80% to 125% of the solar panels' capacity. For example, if your panels generate 10 kW: Minimum inverter size = $10,000 \times 0.8 = 8$ kW Maximum inverter size = $10,000 \times 1.25 = 12.5$ kW.

How to choose a solar inverter?

Choose an inverter that has a surge watt rating equal to or greater than this value. As for voltage drop, check the wire length between your solar panels and the batteries. If the wire length is long, you may need to choose a lower voltage system (12V, 24V, or 48V) to minimize voltage drop.

Why should you choose a solar inverter size?



Inverters play a vital role in converting the direct current (DC) generated by your solar panels into usable alternating current (AC) for your home. Selecting the proper inverter size ensures that your solar system operates at its full potential, ultimately impacting energy savings and system longevity.

How efficient is a solar inverter?

As long as the input from the panels falls within the range of the window, the inverter can be considered to be operating optimally. In the graph below, the red line represents an average inverter efficiency and the green arrow represents the power output from your solar panels.



What size inverter should I use for a 550w solar panel



[Properly Sizing your IQ8 Enphase Microinverters : ...](#)

Discussion of solar photovoltaic systems, modules, the solar energy business, solar power production, utility-scale, commercial rooftop, residential, off-grid ...

[Solar Inverter Sizing Calculator: Important Guide](#)

Choosing the right inverter depends on the system's capacity. Below is a guide for common system sizes: For a 10 kW solar system, an inverter size between 8 kW to 12.5 kW is ...



[How many solar panels can an inverter handle](#)

To effectively determine the number of solar panels an inverter can handle, you must first assess the size of your solar panel array. The ...

How to Choose the Right Size Solar Inverter: Step-by-Step with ...

Wondering what size solar inverter do I need for your solar system? This guide walks you through



calculating inverter size based on panel capacity, power usage, and safety ...

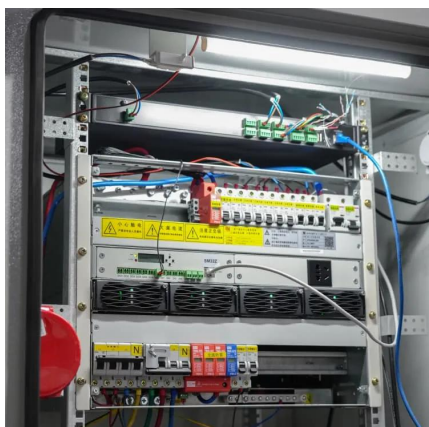


[What Size Inverter Do I Need for a Solar Panel System?](#)

To help you choose the right size solar inverter and matching battery, a solar inverter size selection comparison table is provided below. ...

[How To Size A Solar Inverter in 3 Easy Steps](#)

In this guide, we share 3 easy steps on how to size a solar inverter correctly. We explain the key concepts that determine solar inverter sizing including your power needs, the type and number ...



[What size inverter do I need for solar panels](#)

To help you choose the right inverter for your solar setup, let's look at the various types available. Understanding the differences can guide your decision based on your unique ...



[Solar Inverter Sizing Calculator: Important Guide](#)

A solar inverter sizing calculator is a tool used to determine the appropriate size of a solar inverter for your solar power system based on the ...



Solar Panel Inverter Size Calculator: Know What You Need , Angi

Planning to install solar panels? You'll need a solar inverter. Follow this guide to calculate the best solar panel inverter size for your system.



[How To Size A Solar Inverter in 3 Easy Steps](#)

It consists of 18 JA Solar JAM72S30-545 WP panels using a 9kW 3 phase GroWatt inverter with 2 strings. The panels are installed on a flat roof on a 178 degrees south orientation in two 3*3 ...



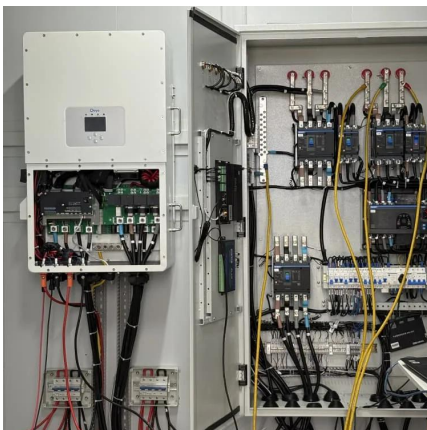
[What Size Inverter Do I Need for a Solar Panel System?](#)

To help you choose the right size solar inverter and matching battery, a solar inverter size selection comparison table is provided below. This table will help you quickly ...



What Size Solar Inverter Do I Need? Experts Break It Down

Picking the right solar inverter isn't rocket science, but it's not a wild guess either. Match your inverter size to your solar panel output, leave a little headroom, and don't cheap ...



[Solar Panel Output Calculator , Get Maximum Power ...](#)

The Solar Panel Output Calculator is a highly useful tool for anyone looking to understand the total output, production, or power generation ...

[How to Determine Solar Panel Fuse Size](#)

When it comes to fusing solar panels, the general rule of thumb is that the larger the wattage of the panel, the larger the fuse size should be. Use this guide to determine the right solar panel ...





Appropriately sized Microinverters for Panel Size?

As you increase panel size to that 1.5 for easy, your max power will still be 3840W as the inverter clips there BUT, now you have that 3840W of power for a much longer time on either side of ...

What Size Inverter You Need (Calculations + Battery)

Inverters are made with different power capacities, depending on the size of the system you want to run. For this discussion, we are looking at a domestic inverter that you can ...



What Size Solar Inverter Do I Need? Experts Break It ...

Picking the right solar inverter isn't rocket science, but it's not a wild guess either. Match your inverter size to your solar panel output, leave a little ...

Optimal micro inverter for 550WP panels : r/solar

It consists of 18 JA Solar JAM72S30-545 WP panels using a 9kW 3 phase GroWatt inverter with 2 strings. The panels are installed on a flat roof on a 178 degrees south ...



[The Only Inverter Size Chart You'll Ever Need](#)

We created a comprehensive inverter size chart to help you select the correct inverter to power your appliances. The need for an inverter size chart first became apparent ...



[What size inverter do I need for solar panels](#)

To help you choose the right inverter for your solar setup, let's look at the various types available. Understanding the differences can guide your ...



[Solar Inverter Sizing to Improve Solar Panel Efficiency](#)

To calculate the required capacity for your solar inverter, sum up the total wattage of your solar panels and adjust based on expected system efficiency, shading, and the specific ...





How to Size a Solar Charge Controller: Step-by-Step Guide

Discover how to size a solar charge controller with our clear, step-by-step guide. Master the process and elevate your solar-power system today.



[Solar Inverter Sizing Calculator: Important Guide](#)

Choosing the right inverter depends on the system's capacity. Below is a guide for common system sizes: For a 10 kW solar system, an ...

[550 Watt Solar Panel: Maximize Your Energy Savings ...](#)

Discover the power of our 550 watt solar panel! Maximize your energy savings and reduce your bills today with our efficient 550 watt solar ...



[What Size Inverter You Need \(Calculations + Battery\)](#)

Inverters are made with different power capacities, depending on the size of the system you want to run. For this discussion, we are looking at a ...



Solar Inverter Sizing to Improve Solar Panel Efficiency

To calculate the required capacity for your solar inverter, sum up the total wattage of your solar panels and adjust based on expected system ...



Advice on cable thickness running between solar ...

Then you connect each set of 2 into a solar distribution box with 20 amp breakers for each panel set. The solar panel wire size, normally 10 gauge (3mm) is fine ...

Contact Us

For catalog requests, pricing, or partnerships, please visit:
<https://www.bringmethehorizon.eu>