



SolarMax Pro Energy Storage Systems

What size inverter is best for a 12v 20 amp battery





Overview

To recharge your battery from time to time you would need the right size solar panel to do the job! Read the below article to find out the suitable solar panel size for your battery bank .

Note!The battery size will be based on running your inverter at its full capacity
Assumptions 1. Modified sine wave inverter efficiency: 85% 2. Pure sine wave inverter efficiency:90% 3. Lithium Battery:100% Depth of discharge limit 4. lead-acid.

To calculate the battery capacity for your inverter use this formula Inverter capacity (W)*Runtime (hrs)/solar system voltage = Battery Size*1.15 Multiply the result by 2 for lead-acid type.

You would need around 24v150Ah Lithium or 24v 300Ah Lead-acid Batteryto run a 3000-watt inverter for 1 hour at its full capacity .

Here's a battery size chart for any size inverter with 1 hour of load runtime
Note! The input voltage of the inverter should match the battery voltage. (For example 12v battery for 12v.

After hands-on testing and side-by-side comparison, I confidently recommend the BELTTT 2000W Pure Sine Wave Inverter as your best-sized inverter for a 12-volt battery—perfect when power quality and capacity really matter. Top Recommendation: BELTTT 2000W Pure Sine Wave Inverter, 12V to 120V AC, USBWhat voltage should a 12V inverter run on?

The input voltage of the inverter should match the battery voltage. (For example 12v battery for 12v inverter, 24v battery for 24v inverter and 48v battery for 48v inverter Summary What Will An Inverter Run & For How Long?

.

What is the recommended battery size for an inverter?

Interpreting Results: Once you input the required data, the calculator will generate the recommended battery size in ampere-hours (Ah). For instance, if your power consumption is 500 watts, the usage time is 4 hours, and the



inverter efficiency is 90%, the calculator might suggest a battery size of approximately 222 Ah.

Why should you use the calculate battery size for inverter calculator?

Using the Calculate Battery Size for Inverter Calculator can significantly streamline your power management process. This tool is particularly beneficial in scenarios where precise power estimation is critical, such as designing renewable energy systems, ensuring backup power in off-grid locations, or optimizing battery usage for cost efficiency.

What is a 12 volt inverter?

An inverter is a device that turns the power from a 12 volt DC battery, like the one in your car or truck, into the 120 volt AC power that runs all of the electronics in your house. You can use one of these devices to power all sorts of devices in your car, but it's important to figure out how big of an inverter you need first.

How much battery should a 500 watt inverter use?

For instance, if your power consumption is 500 watts, the usage time is 4 hours, and the inverter efficiency is 90%, the calculator might suggest a battery size of approximately 222 Ah. Practical Tips: Ensure all input values are accurate to avoid skewed results.

How much power does an inverter need?

The continuous power requirement is actually 2250 but when sizing an inverter, you have to plan for the start up so the inverter can handle it. Third, you need to decide how long you want to run 2250 watts. Let's say you would like to power these items for an eight-hour period.



What size inverter is best for a 12v 20 amp battery



Calculate Battery Size For Any Size Inverter (Using Our Calculator)

To recharge your battery from time to time you would need the right size solar panel to do the job! Read the below article to find out the suitable solar panel size for your battery bank

[What Size Inverter Do I Need for My RV?](#)

Choosing the right size inverter for your RV will depend on several factors. Let's explore the questions you should ask before making your purchase. 1. What Are You Trying to ...



[What Size Wire For Any Inverter: Inverter Wire Size ...](#)

Choosing the right cables for your inverter can be downright confusing. This guide helps you find the right size wire for any sized inverter.

[Calculate Battery Size for Inverter Calculator](#)

Estimate the battery capacity required for your inverter based on power load, runtime, and



efficiency. Using the Calculate Battery Size for Inverter Calculator can ...



[What Size Inverter Can I Run Off a 200Ah Battery?](#)

When determining what size inverter can be run off a 200Ah battery, it's essential to consider both the power requirements of your devices and the characteristics of the battery itself. A typical ...

How to Calculate the Right Inverter Battery Capacity for Your Needs

Learn how to calculate the right inverter battery capacity for your needs with a simple formula. Understand power requirements, efficiency losses, and the best battery types ...



[Lithium Batteries: What Size Inverter Can I Use?](#)

Bottom line, if you want to run large inverter loads above 1000w on a lithium battery, make sure you choose an lithium battery that is designed for larger inverters or a system that can be ...





Lithium Batteries: What Size Inverter Can I Use?

Bottom line, if you want to run large inverter loads above 1000w on a lithium battery, make sure you choose an lithium battery that is designed for larger ...



Can an Inverter Be Too Big for Your Battery System?

How to Calculate the Right Inverter Size for Your Battery Match the inverter's continuous wattage rating to the battery's discharge capacity. For a 12V 200Ah battery (2.4kWh), a 2000W inverter ...

What Size Inverter Do I Need?

To figure out how long a 100Ah battery will run a 1000W inverter, you need to consider the battery's voltage and the inverter's efficiency. Assuming you're using a 12V ...



Find the Right Inverter Size: How Big An Inverter Do ...

The right size inverter for your specific application depends on how much wattage your devices require. This information is usually printed ...



Can an Inverter Be Too Big for Your Battery System?

Match the inverter's continuous wattage rating to the battery's discharge capacity. For a 12V 200Ah battery (2.4kWh), a 2000W inverter is ideal. Formula: Inverter Wattage \leq (Battery ...



What size inverter can I run off a 100Ah lithium battery?

What size inverter can I run off a 100Ah lithium battery? A 100Ah lithium battery can typically support an inverter up to 1,200W for 1 hour, assuming a 12V system. Actual runtime ...

What Size Inverter Do I Need?

Whether you're looking for what size inverter is best for your house or something as simple as an inverter for power your TV, the proper size will be a measurement based on the typical power ...





Find the Right Inverter Size: How Big An Inverter Do You need?

The right size inverter for your specific application depends on how much wattage your devices require. This information is usually printed somewhere on electronic devices, ...

[The Only Inverter Size Chart You'll Ever Need](#)

During our research, we discovered that most inverters range in size from 300 watts up to over 3000 watts. In this article, we guide you through the different inverter sizes. ...



Best Sized Inverter For 12 Volt Battery [Updated On: August 2025]

After hands-on testing and side-by-side comparison, I confidently recommend the BELTTT 2000W Pure Sine Wave Inverter as your best-sized inverter for a 12-volt ...



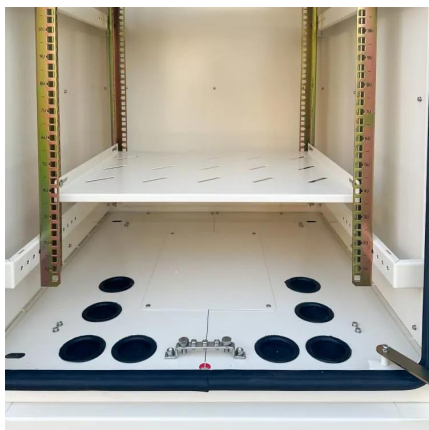
[How to Calculate Battery Size for Inverters of Any Size](#)

Learn how to calculate how much battery power you need to get your inverter up and running with The Inverter Store's handy how-to guide. It works for any size.



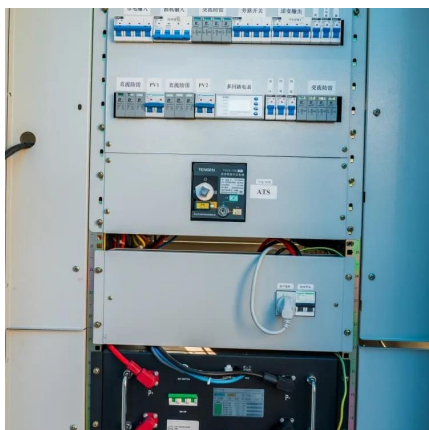
[Which inverter is best for 200ah battery?](#)

For a 12-volt 200Ah battery, choosing a 1000W inverter is a relatively reasonable solution. It can provide power for a variety of household devices without over-consuming the battery, ensuring ...



[Inverter Size Chat: What Size Inverter Do I Need?](#)

Plus, if you draw a lot of power with a huge inverter from a small battery, you're going to run out of electricity fast. That's why I've put together a handy inverter ...



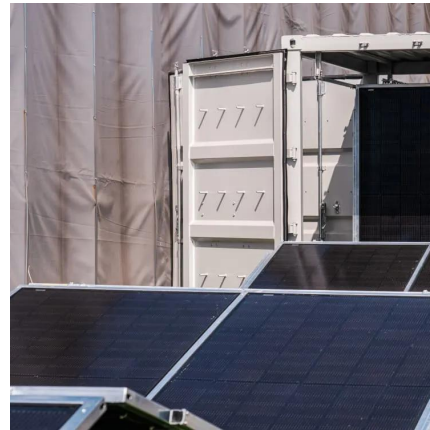
Inverter Wire Size Calculator

By using this inverter wire size calculator, you'll learn how to size battery cables, but that's only one step of the process. Check out the rest of our helpful ...



12 Volt Battery Inverter: How Long it will Last

How long will a 12v Battery last with an Inverter? Honestly, you can't tell the exact duration a 12v battery lasts when connected to a device ...



How Do You Choose the Right Inverter Size for Your Specific ...

For example, a 200Ah lithium battery at 12V provides 2400 watt-hours. Select an inverter that meets or exceeds your peak and continuous power demands. Selecting the ...

What Size Inverter Do I Need?

Whether you're looking for what size inverter is best for your house or something as simple as an inverter for power your TV, the proper size will be a ...



Contact Us

For catalog requests, pricing, or partnerships, please visit:
<https://www.bringmethehorizon.eu>