



SolarMax Pro Energy Storage Systems

What is the voltage of the lithium battery cabinet at the site





Overview

What is the best storage voltage for a lithium ion battery?

The best storage voltage for lithium titanate oxide (LTO) cells is between 2.4V and 2.5V per cell, and for lead acid batteries, it's around 2 volts per cell or 12 volts for a typical battery. Ideally, you should have a designated area that you use solely for lithium-ion battery storage.

Why do lithium batteries change voltage?

These changes are closely related to the battery's internal chemical reactions and physical characteristics. In the initial phase of charging, the lithium battery voltage is usually low, and as the internal chemical reactions of the battery gradually reach equilibrium, the voltage rises.

What happens when a lithium battery is charged?

Constant Voltage Charging Stage: When the lithium battery voltage reaches 4.2V, charging enters a constant voltage state, maintaining this voltage while the current gradually decreases over time until charging is complete. When discharging, the trend of voltage change in lithium-ion batteries is the opposite of charging.

What is the nominal voltage of a lithium battery?

There are significant differences in the nominal voltages of different types of lithium batteries. For example, the nominal voltage of lithium iron phosphate batteries is approximately 3.2V, while the nominal voltage of ternary lithium batteries and lithium cobalt oxide batteries is about 3.7V.

Why does lithium battery voltage fluctuate during charge and discharge?

The lithium battery voltage experiences significant fluctuations during charge and discharge, influenced by various factors, including the differences in nominal voltage among different materials, voltage fluctuations during charge and discharge processes, and the impact of voltage changes on battery



performance.

Why is lithium battery voltage important?

As an important energy supplier for modern electronic devices, lithium batteries are widely used in products such as mobile phones, laptops, and electric vehicles. Understanding lithium battery voltage and its influencing factors is crucial for improving battery efficiency and extending its healthy lifespan.



What is the voltage of the lithium battery cabinet at the site



What is the voltage of the energy storage battery cabinet?

The voltage of energy storage battery cabinets typically ranges from 12V to 800V, influenced by application requirements, technology used, and the configuration of battery cells.

Lithium Battery Charging Cabinet: The Essential Guide to Safe ...

Discover how a lithium battery charging cabinet enhances safety by preventing fires, controlling temperature, and offering secure storage. Learn the benefits, features, and ...



[Commercial and Industrial Energy Storage Cabinet ...](#)

Liquid cooled outdoor 215KWH 100KW lithium battery energy storage system cabinet is an energy storage device based on lithium-ion batteries, which uses ...

[Storing Lithium Batteries Best Voltages By Chemistry](#)

The best storage voltage for lithium-ion batteries should be stored at whatever voltage is required

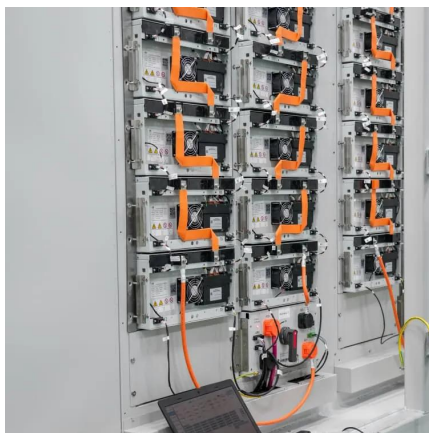


to be at around 60-70% of its maximum charge
...



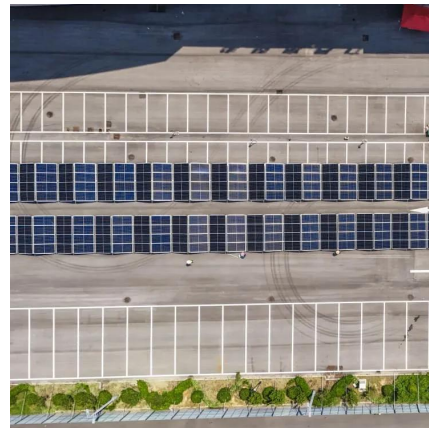
Deye ESS Lithium Battery Cabinet System 61.44 kWh Outdoor

The Deye 61.44 kWh ESS Lithium Battery Cabinet System is a high-voltage, outdoor-ready energy storage solution for commercial, industrial, and large residential applications. It ...



How much charge is left in the lead-acid lithium battery

The 48V lead-acid battery state of charge voltage ranges from 50.92 (100% capacity) to 45.44V (0% capacity). Lead acid battery is comprised of lead oxide (PbO_2) cathode and lead (Pb) ...



Sep

Many medical device developers now work with Lithium Power, as their professional medical lithium battery maker rather than trying to develop their own battery solution in-house. Working ...



How to Store Lithium-Ion Batteries

It's vital to know how to safely store lithium ion batteries when not in use or while charging. Learn how Justrite can help with li-ion battery storage.



[Ultimate Guide to Lithium-Ion Battery Voltage Chart](#)

Lithium-ion battery voltage chart represents the state of charge (SoC) based on different voltages. This Jackery guide gives a detailed overview of lithium-ion batteries, their ...

[Storing Lithium Batteries Best Voltages By Chemistry](#)

The best storage voltage for lithium-ion batteries should be stored at whatever voltage is required to be at around 60-70% of its maximum charge voltage when not in use.



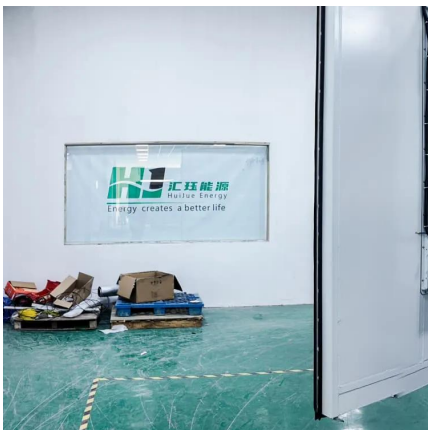
How to design an energy storage cabinet: integration and ...

Efficient heat dissipation design: Lithium batteries and inverters will generate a certain amount of heat during operation, so the energy storage cabinet requires an effective ...



Safety Rules

Lithium-ion batteries offer an effective battery life that is easily double that of a traditional VRLA. This alone reduces the headaches of frequent VRLA battery replacements. LIB are designed ...



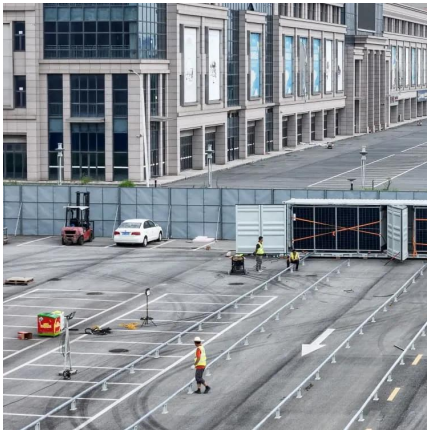
[Li-ion batteries in storage : r/batteries](#)

Make sure the batteries are in a fire-safe location and cabinet, my friend's work just had their battery cabinet go up in flames about a year ago. Their investment in a fire safe cabinet was ...

Analysis of lithium battery voltage and its influencing ...

This article will start from the basic working principles of lithium batteries, exploring the differences in lithium battery voltage among different materials, ...





Vertiv EnergyCore Battery System

Designed for modern data centers. With high-density lithium-ion battery modules and an integrated battery management system (BMS), Vertiv EnergyCore provides safe, reliable runtime while ...

EHR Home , Office of Environmental Health and Radiation

...

The most important safety consideration for lithium-ion and lithium-polymer batteries is to treat the battery as if it will ignite at any time. Even though the odds are remote, if each battery is ...



Choosing the Right Battery Storage Cabinet: A Comprehensive ...

This comprehensive guide provides a detailed overview of safety, design, compliance, and operational considerations for selecting and using lithium-ion battery storage ...

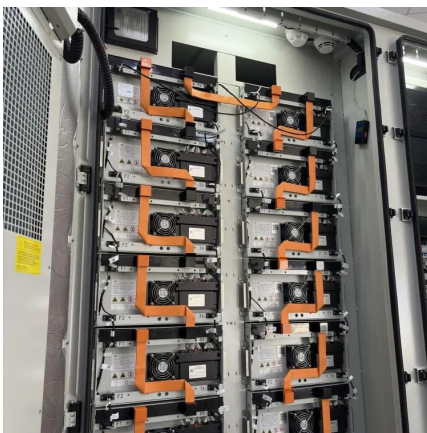
[Lithium battery cabinet voltage requirements](#)

Single lithium-ion batteries (also referred to as cells) have an operating voltage (V) that ranges from 3.6-4.2V. Lithium ions move from the anode to the cathode during discharge.



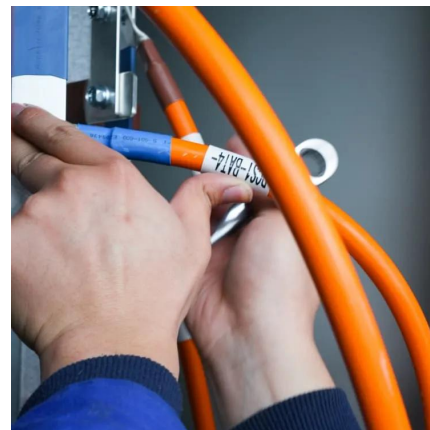
Galaxy Lithium-ion Battery Cabinet

Galaxy Lithium-ion Battery Cabinet. With 10, 13, 16, or 17 Battery Modules Installation and Operation. LIBSESMG10IEC, LIBSESMG13IEC, LIBSESMG16IEC, LIBSESMG17IEC ...



[Choosing the Right Battery Storage Cabinet: A ...](#)

This comprehensive guide provides a detailed overview of safety, design, compliance, and operational considerations for selecting and using ...



[Specifications for Lithium-ion Battery Cabinets](#)

NOTE: If the battery temperature is higher than the threshold after a full discharge at maximum continuous discharge power, the UPS may have to reduce the charge current to zero to ...





Analysis of lithium battery voltage and its influencing factors

This article will start from the basic working principles of lithium batteries, exploring the differences in lithium battery voltage among different materials, the voltage changes during charge and ...



Dielectric Voltage Withstand Test

Dielectric Voltage Withstand Test Dielectric Voltage Withstand Test The Dielectric Voltage Withstand Test, also known as the Hipot Test (short for high potential ...

[Samsung Gen 2 lithium battery cabinet site plan](#)

FOR PARALLEL BATTERY CABINETS, THE AC SOURCES CAN BE PROVIDED TO ONLY THE "MASTER" CABINET TOP WIRING KIT AND FROM THERE TO THE PARALLEL ...



Contact Us

For catalog requests, pricing, or partnerships, please visit:
<https://www.bringmethehorizon.eu>