



SolarMax Pro Energy Storage Systems

What is the outdoor power supply in New Zealand





Overview

Much like in neighboring Australia and parts of Asia such as China, New Zealand uses the triple prong Type I power outlet. These usually have three slits, one vertical plus two on a 45-degree angle. The outlets also have on/off switches so you can more safely plug your cables in without any sparks! Are there electrical outlets in New Zealand?

No, the electrical outlets in New Zealand are different from those in the United States. In New Zealand electrical outlets of type I are used, while the United States has electrical outlets of types A & B. Do I need a travel adapter for New Zealand?

The electrical outlets and power plugs in New Zealand are of type I (see images).

What is the electricity supply in New Zealand?

The New Zealand electricity supply is 240 volts, 50 hertz. Your electrical equipment should work here if you come from The UK, continental Europe, South Africa, South Korea, India, China, Russia or Malaysia. Be aware that electrical devices in New Zealand are rated for a maximum of 10 amps.

What do New Zealand electrical outlets look like?

When you are going on a trip to New Zealand, be sure to pack the appropriate travel plug adapter that fits the local sockets. But what do those electrical outlets look like?

In New Zealand, type I plugs and sockets are the official standard. What is the mains voltage in New Zealand?

.

Which power supply is best for camping in New Zealand?

Being the smallest type of portable power supply for camping, portable power



banks tend to be the best option for campers who are hiking New Zealand's epic trails. If travelling to New Zealand campsites by car or campervan, you can get electricity through your vehicle's battery.

Do I need a travel adapter in New Zealand?

New Zealand uses electrical outlets and power plugs of type I (see images). If your country uses the same electrical outlets and power plugs, you don't need a travel adapter. Are the electrical outlets and power plugs in your country different?

Then you will need a travel adapter.

What electrical equipment should I bring to New Zealand?

Electrical Equipment in NZ – What to bring?

The New Zealand electricity supply is 240 volts, 50 hertz. Your electrical equipment should work here if you come from The UK, continental Europe, South Africa, South Korea, India, China, Russia or Malaysia.



What is the outdoor power supply in New Zealand



[A Solar-Powered Meteor Shower Light String, 8](#)

Shop A Solar-Powered Meteor Shower Light String, 8 Pieces, 11.8 Inches, Outdoor Hanging Light, Suitable For Lawns, Balconies, Gardens, Villas, Christmas Decoration, Switch Control, ...

Power Supply , New Zealand A to Z

In New Zealand the power points are usually three pins and have a voltage of 230-240 volts. Adaptor plugs are best purchased outside of New Zealand before you travel with most models ...



DC 12V 2A AU Power supply outdoor Waterproof 24w Adapter ...

DC 12V 2A AU Power supply 2000ma outdoor Waterproof 24w Adapter For Australia new Zealand led strip CCTV Cameras AHD NVR AC Description Waterproof :This power adapter is ...



Travel Adapters, Plugs & Voltage in New Zealand & Australia - Guide

New Zealand and Australia, like most of Asia, Europe and many other countries use 220 and



240 volts. North America, Canada, Mexico, South America, along with the ...



MagGo Power Bank, Ultra-Slim 5000mAh/10000mAh

Shop MagGo Power Bank, Ultra-Slim 5000mAh/10000mAh Magnetic Battery Pack, Qi2 Certified 15W Fast Charging, MagSafe Compatible Portable Charger, Ergonomic Design, For iPhone ...



Plug and outlet type used in New Zealand

What is the mains voltage in New Zealand? The standard voltage in New Zealand is 230V at a frequency of 50Hz. Do I need a power plug adaptor in New ...



Power Supply & Converters

Shop our range of Power Supply & Converters at warehouse prices from quality brands. Order online for delivery or Click & Collect at your nearest Bunnings.



[Plug and outlet type used in New Zealand](#)

What is the mains voltage in New Zealand? The standard voltage in New Zealand is 230V at a frequency of 50Hz. Do I need a power plug adaptor in New Zealand? If the plug shape in New ...

[Philips Hue 100W Outdoor Power Supply Unit](#)

Connect two cables -- each measuring up to 30 meters -- to any low-voltage outdoor Philips Hue light on each connector, adding each fixture's wattage to ...



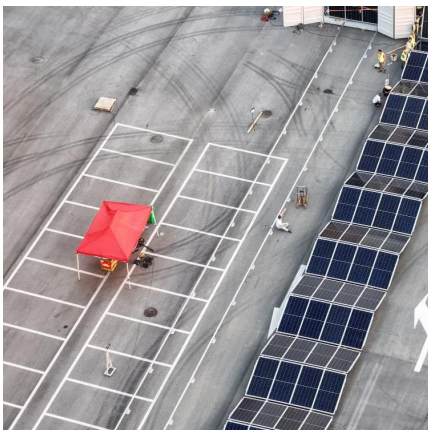
[Farm Machinery New Zealand - TaskpowerNZ](#)

About With our origins in farm machinery and power equipment extending back to 1964, we have the expertise and experience to deliver on our commitment to ...



NZEC 51:2001

The New Zealand Electrical Code of Practice for Homeowner/Occupier's Electrical Wiring Work in Domestic Installations 2004 (NZEC 51:2004) and the Revocation of the New Zealand ...

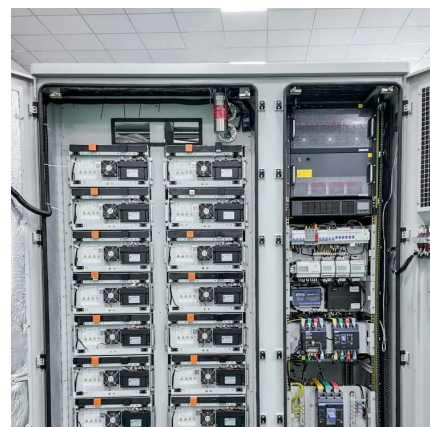


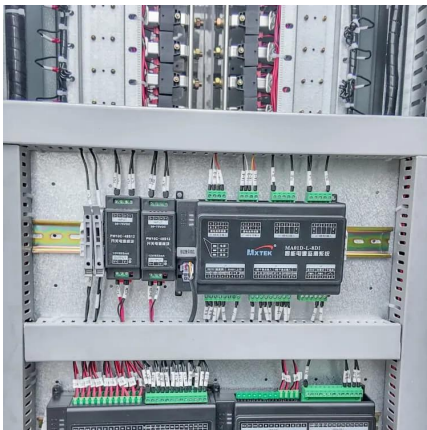
LED 12V Power Supply

LED 12V Power Supply New Zealand Backlit LED House Address Number Signs by Luxello. Outdoor Custom illuminated Light Up Address Numbers & Letter signs available in 3", 5", 8", ...

US to New Zealand Power Adapter: What Plug Do I Need? (2025)

6 days ago· New Zealand uses the triple prong Type I power outlet, much like in neighboring Australia and parts of Asia such as China. These usually have three slits, one vertical plus two ...





Philips Hue 100W Outdoor Power Supply Unit

Connect two cables -- each measuring up to 30 meters -- to any low-voltage outdoor Philips Hue light on each connector, adding each fixture's wattage to reach the maximum 100W threshold ...

New Zealand

With its unique resource base, New Zealand is a success story for the development of renewable energy without government subsidies. Geographically isolated, the country has also developed ...



Electrical Equipment in NZ - What to bring? - Moving to New Zealand

The New Zealand electricity supply is 240 volts, 50 hertz. Your electrical equipment should work here if you come from The UK, continental Europe, South Africa, South Korea, ...

Electrical Equipment in NZ - What to bring? - Moving to New ...

The New Zealand electricity supply is 240 volts, 50 hertz. Your electrical equipment should work here if you come from The UK, continental Europe, South Africa, South Korea, ...



Large Capacity 50000mAh Power Bank 22.5W Fast

Shop Large Capacity 50000mAh Power Bank 22.5W Fast Charging, With Lighting/LED Power Display, Type-C/USB/Micro Interface, Suitable For Charging Mobile Phones/Android ...

New Zealand

What type of plugs and sockets are used in New Zealand? When you are going on a trip to New Zealand, be sure to pack the appropriate travel plug adapter that fits the local ...



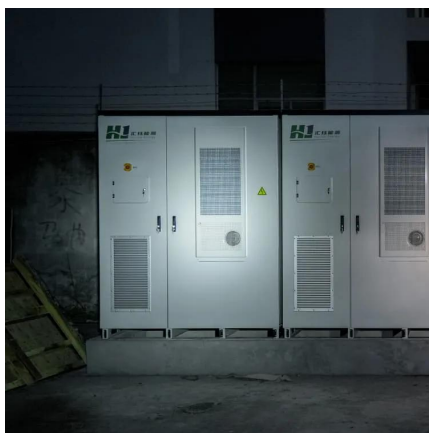
Electricity sector in New Zealand

In New Zealand electricity was first generated within factories for internal use. The first generation plant where power was transmitted to a remote location was ...



[One Pcs Portable Power Station, Laptop Power Bank](#)

Shop One Pcs Portable Power Station, Laptop Power Bank With 150W AC Outlet, Laptop Charger Battery Backup Power Supply For Outdoor Camping Home Emergency Outage online ...



[New Zealand's Power Outlets and Adapters](#)

While adapters are essential for plugging into wall outlets, a power bank can be a lifesaver when you're out and about exploring New Zealand. Imagine hiking in Fiordland or kayaking in Abel ...

Comprehensive Guide to Electrical Wiring Standards in New Zealand ...

Understand the crucial electrical wiring standards for New Zealand homes, including key regulations and best practices for safety and efficiency. Learn about the components, ...



Builders & Meter Boxes NZ , Exterior Electric Meter Box Auckland

The Builders Temporary Power Supply Box enables builders and other tradespeople access to an electricity supply on a worksite where temporary power is required. The plastic construction ...



Contact Us

For catalog requests, pricing, or partnerships, please visit:
<https://www.bringmethehorizon.eu>