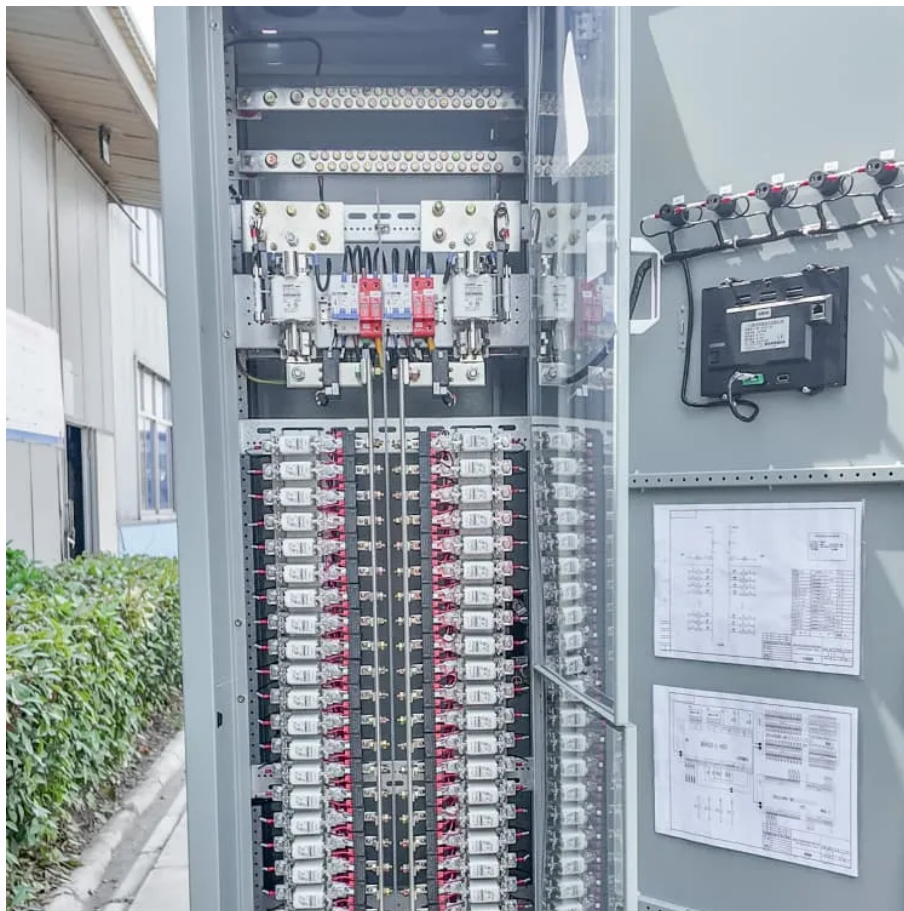




**SolarMax Pro Energy Storage Systems**

## **What is the current when the battery cabinet is charging**





## Overview

---

What happens when a battery is fully charged?

At this stage, the battery voltage remains relatively constant, while the charging current continues to decrease. Charging Termination: The charging process is considered complete when the charging current drops to a specific predetermined value, often around 5% of the initial charging current.

How long does it take to charge a battery?

Typical charging current: 0.1C to 0.3C Charging time: 6–12 hours Efficiency: ~80% Typical charging current: 0.5C to 1C Charging time: 1–3 hours Efficiency: ~95% Typical charging current: 0.5C Charging time: 2–4 hours Efficiency: ~90% Tips to Optimize Charging Current and Time.

What happens if you charge a lithium ion battery below voltage?

Going below this voltage can damage the battery. Charging Stages: Lithium-ion battery charging involves four stages: trickle charging (low-voltage pre-charging), constant current charging, constant voltage charging, and charging termination. Charging Current: This parameter represents the current delivered to the battery during charging.

When does a lithium ion battery charge end?

Charging Termination: The charging process is considered complete when the charging current drops to a specific predetermined value, often around 5% of the initial charging current. This point is commonly referred to as the “charging cut-off current.” II. Key Parameters in Lithium-ion Battery Charging.

What is charging current & charging time?

Charging current is the rate at which electrical energy is delivered to a battery. It's typically measured in amperes (A). This value depends on the battery's capacity and the charger's output. What Is Charging Time?



Charging time refers to the duration it takes to fully replenish a battery from a given state of charge (SOC) to 100%.

How to calculate battery charging time?

Below are the formulas for calculating the required battery charging time (in hours) and the necessary charging current (in amperes): Charging Time of Battery = Battery Ah  $\div$  Charging Current  $t = \text{Ah} \div \text{A}$  and Required Charging Current for battery = Battery Ah  $\times 10\%$   $\text{A} = \text{Ah} \times 10\%$  Where:  $t$  = Time in hrs.



## What is the current when the battery cabinet is charging

---



### [EV Battery Process: Charging and Discharging ...](#)

It closely monitors and controls different battery parameters like voltage, temperature, and current. The main goal of the BMS is to safely ...

### [Correct charging current for lithium-ion batteries](#)

Do I have to find a battery with the same or more max charging current? I suppose I can measure the existing battery's charging current but what I'm curious about is what specs I ...



### [Guide to Calculating Battery Charging Current and Time](#)

Understanding how to calculate Charging Current and Time is essential for anyone working with batteries--whether you're managing off-grid solar systems, electric vehicles, or ...



## Understanding Battery Current: How It Works, Measurement ...

Battery current refers to the flow of electricity during charging (inflow) and discharging





(outflow), directly impacting efficiency and lifespan under improper conditions. And ...



### [Understanding Battery Current: How It Works, ...](#)

Battery current refers to the flow of electricity during charging (inflow) and discharging (outflow), directly impacting efficiency and lifespan ...

### [Understanding Battery Charging Current Readings](#)

Charging current refers to the amount of electrical current (measured in Amps) that flows from the charger to the battery during the charging process. It is an essential factor to monitor, as it ...



### **Lithium Battery Charging Cabinet: The Essential Guide to Safe ...**

What is a Lithium Battery Charging Cabinet? A lithium battery charging cabinet is a secure enclosure designed specifically to store and charge lithium-ion batteries safely. Unlike ...



## How to Calculate Battery Charging Time and Current?

In this simple tutorial, we will explain how to determine the appropriate battery charging current and how to calculate the required charging time in hours. To make it easy to understand, even ...



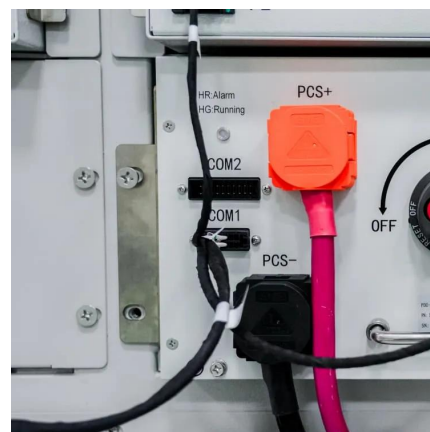
## What is the difference between constant current and ...

In practical terms, most charging processes start with a constant current stage to fill the battery quickly, then transition to a constant voltage ...



## Correct charging current for lithium-ion batteries

For standard Li-ion or Li-polymer batteries, chargers often target 0.5C charge current. In other words, if the battery is rated at 500 mA-h, the target current is 250 mA. It is ...



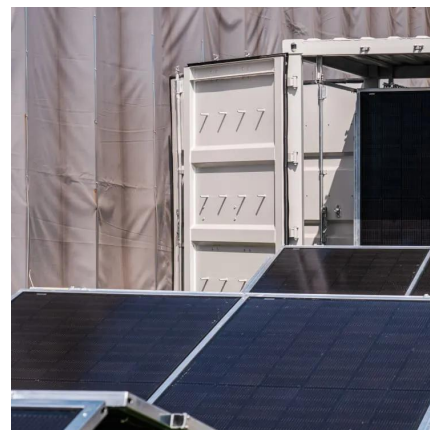
## **What is a Battery Charging Cabinet? A Complete Guide to Safe ...**

Discover the importance of a battery charging cabinet for safely storing and charging lithium-ion batteries. Learn about features, risks, fire protection, and best practices for ...



### What is the difference between constant current and ...

The difference between constant current (CC) and constant voltage (CV) stages in charging lies in how the charge is delivered to the ...



### **Battery Cabinet Solutions: Ensuring Safe Storage and Charging ...**

Discover how a battery cabinet ensures safe lithium-ion storage and charging. Learn about US (NFPA 855, OSHA) and EU regulations, fire-resistant designs, and ...

### **batteries**

I have almost no experience with Li-Ion charging. Documentation to battery is very poor, but there is an info about charging profile: Stage 1: Constant Current 0.82 Ampere (0.2C) ...





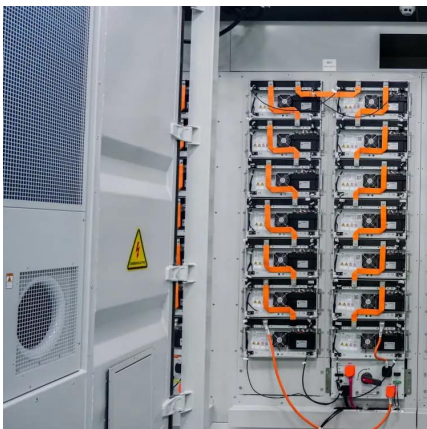


## Charging current - calculation and related knowledge and FAQs

Charging current refers to the amount of current required to optimally charge a battery. Charging current depends on a few factors, which will be discussed later on, but ...

### [How to Calculate Battery Charging Time & Charging ...](#)

Welcome to this comprehensive guide on understanding battery charging time and charging current! Whether you're a tech enthusiast, an ...



## Charging current - calculation and related knowledge ...

Charging current refers to the amount of current required to optimally charge a battery. Charging current depends on a few factors, which ...

### [How to Calculate Battery Charging Current and Time](#)

Typically, the charging current is set to about 10% of the battery's amp-hour (Ah) capacity, with charging time estimated by dividing the battery ...





## What is the difference between constant current and constant ...

In practical terms, most charging processes start with a constant current stage to fill the battery quickly, then transition to a constant voltage stage to ensure safe and complete ...



## How to Calculate Battery Charging Current and Time

Typically, the charging current is set to about 10% of the battery's amp-hour (Ah) capacity, with charging time estimated by dividing the battery capacity by the charging current ...



## Battery charge current

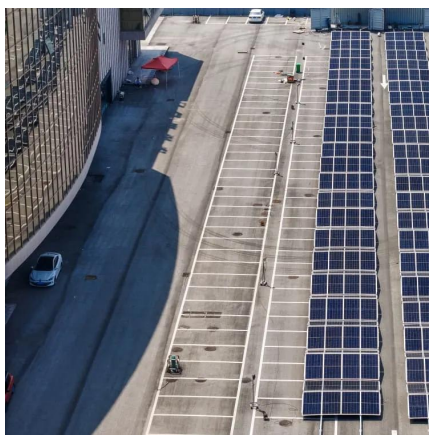
The charging current will be dependent on the state of charge of the battery (the voltage difference between the charger and the battery). Use Ohm's law:  $I = (V_{\text{charge}} - V_{\text{batt}}) / R$ .





## Lithium-ion Battery Charging: Voltage & Current Explained

**Charging Current:** This parameter represents the current delivered to the battery during charging. It decreases as the battery charges and approaches the termination point.

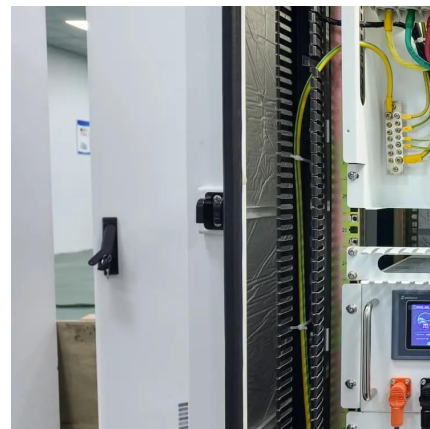


## [Battery Charging & Discharging: 10 Key Parameters ...](#)

Confused about battery performance? We break down 10 vital battery charging and discharging parameters. Optimize your battery life today!

## [A Guide to Understanding Battery Specifications](#)

Charging schemes generally consist of a constant current charging until the battery voltage reaching the charge voltage, then constant voltage charging, allowing the charge current to ...



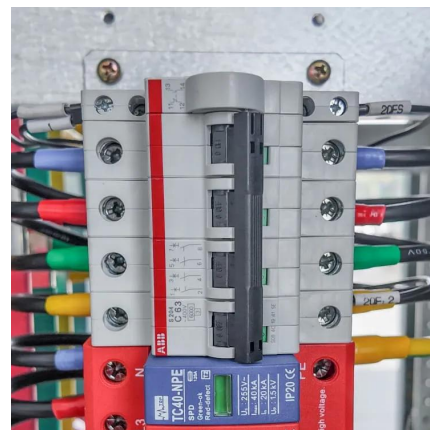
## What Are Battery Rack Cabinets and Why Are They Essential?

Battery rack cabinets are secure, organized, and often climate-controlled enclosures designed to safely store, protect, and charge multiple batteries, especially lithium ...



## How to determine the practical constant current rate of charging ...

Could we precisely determine the exact "Constant Current" value (the Current Limit value, actually) of a given Lithium battery by the following procedure: Determine the ...

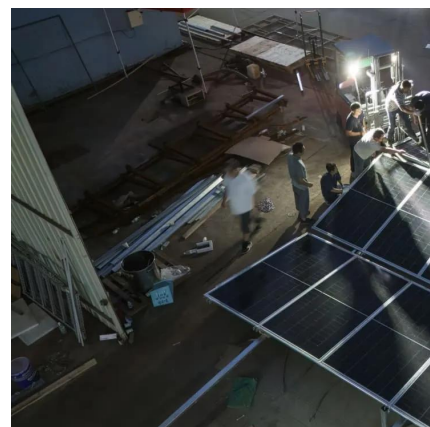


## Stortekt 18 Outlet Lithium-ion Battery Charging Storage Cabinet

The Stortekt 18 Outlet Lithium-ion Battery Charging Storage Cabinet offers unparalleled safety with its robust design. Equipped with 18 power outlets, it is perfect for intensive battery ...

## [What is Charge Current? Understanding Amps in a ...](#)

Charge current refers to the flow of electric current, measured in amps, used to recharge a 12V battery safely and effectively. It dictates how ...





## Contact Us

---

For catalog requests, pricing, or partnerships, please visit:  
<https://www.bringmethehorizon.eu>