

# **What is the appropriate number of solar panel watts**





## Overview

---

On average, a solar panel produces around 150 to 200 watts per square meter. This can vary due to: Example: A 1.7 m<sup>2</sup> panel with 20% efficiency will produce about 340W in full sun. Note: Monocrystalline panels lead in efficiency, making them ideal for rooftops with limited space. How much wattage should a solar panel have?

When considering solar panel sizes and wattage, you'll typically find options ranging from 250 to 400 watts. Opting for higher wattage units can be a game-changer, especially for those with limited roof space.

How many Watts Does a solar panel produce?

Solar panels come in various sizes depending on their wattage or power output. A common residential solar panel size is approximately 65 inches by 39 inches, and typically has a power output of around 300 watts. Larger panels, more common in commercial and industrial installations, can be over 78 inches by 39 inches and produce more than 400 watts.

What is solar wattage?

Wattage refers to the amount of electrical power a solar panel can produce under standard test conditions (STC), which simulate a bright sunny day with optimal solar irradiance (1,000 W/m<sup>2</sup>), a cell temperature of 25°C, and clean panels. In simpler terms, a panel's wattage rating tells you its maximum power output under ideal conditions.

What size solar panels do I Need?

When it comes to solar systems, homeowners will find a variety of solar panel sizes and wattage that cater to different needs and roofing configurations. Typically, these units range from 60 to 72 cells. For example, a standard 60-cell module measures about 65 inches by 39 inches, while a larger 72-cell unit is approximately 77 inches by 39 inches.

How do you calculate solar panel wattage?



Divide the average daily wattage usage by the average sunlight hours to measure solar panel wattage. Moreover, panel output efficiency directly impacts watts and the system's overall capacity. Nevertheless, energy usage, sunshine exposure, system capacity, panel types and materials all have an impact on the calculation.

How many kW is a 20 watt solar panel?

Usually, it is 1.2 to 1.5 which is multiplied by the desired output. For example with a 20% buffer, the required solar panel output with Buffer (Watts) =  $6 \text{ kW} \times 1.20 = 7.2 \text{ kW}$  Nevertheless, when you are choosing solar panels make sure their power ratings equal or surpass the required output to meet your energy needs and preferences.



## What is the appropriate number of solar panel watts

---



### [The Complete Off Grid Solar System Sizing Calculator](#)

Step 1: Determine your Daily Energy Consumption The primary factor determining your off-grid system size is your Daily Energy Consumption, ...

### [Solar Power Basics for Beginners: Volts, Amps, ...](#)

A solar panel consists of multiple smaller components, called solar cells, that do the actual work of converting photons into electrical power. In consumer solar ...



### [Beginner's Guide: Sizing Your Solar System , Renogy US](#)

Learn how to accurately size your solar system with this comprehensive guide. Determine the panels, batteries, controller, and inverter required for your setup. Calculate load sizing, solar ...

### [Solar Panel Sizes and Wattage: A Comprehensive ...](#)

A common residential solar panel size is approximately 65 inches by 39 inches, and



typically has a power output of around 300 watts. Larger ...

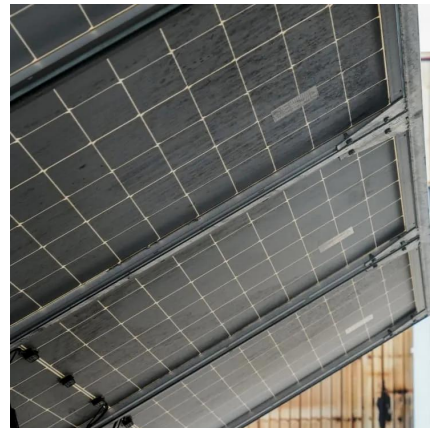


### [How Do You Calculate Solar Panel to Battery](#)

To calculate the number of solar panels and batteries required, first determine your daily energy usage (in watt-hours). Then, calculate the ...

## **Solar Panel Wattage Guide**

Once you have determined your average energy consumption, you can calculate the appropriate wattage for your solar panel system. This calculation involves considering both the number of ...



### [Understanding Solar Panel Sizes and Wattage: A ...](#)

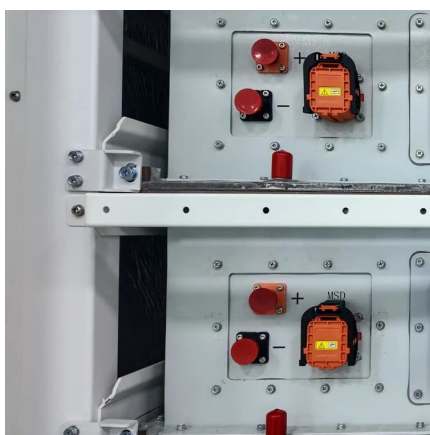
When considering solar panel sizes and wattage, you'll typically find options ranging from 250 to 400 watts. Opting for higher wattage units can ...





## How Many Solar Panels Do I Need?

3 days ago · Wondering how many solar panels you need? Learn how to calculate panel needs, understand peak sun hours, and see real examples to size your solar system right.



## [How many watts of solar panel power . NenPower](#)

Solar panels are designed to convert sunlight into electricity, measured in watts. The wattage rating indicates how much energy a panel can produce under optimal sunlight ...

## [Standard Solar Panel Sizes And Wattages \(100W ...](#)

To bridge that gap of very useful knowledge needed, we have compared and averaged the sizes of 100-watt to 500-watt solar panels available on the ...



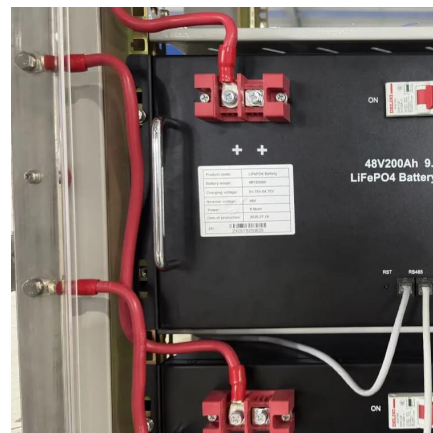
## [What Size Inverter Needed for Solar Panels?](#)

The size of the inverter will be determined by the watts of your solar panels. A general rule of thumb is that you will need a 1,000 watt (1kW) ...



## How Many Solar Panels It May Take To Power Your Home (And ...

2 days ago · Setting up your house to be entirely solar powered is an expensive exercise, and how many panels you need depends on your location and power requirements.



## [What is the W number of solar panels? . NenPower](#)

The W number of solar panels refers to their rated power output, expressed in watts, indicating how much electricity a panel can produce under ...

## Solar Panel Wattage Guide

Key Takeaways Understanding solar panel wattage is crucial for designing an efficient system, considering solar cell efficiency, panel size, and environmental conditions. Accurately ...





### [Guide to Solar Panel Size and Wattage: Choosing the ...](#)

A guide about solar panel size and solar panel wattage. The right home solar power system design will give you the most savings and best ...

### **Solar Panel Sizes and Wattage: A Comprehensive Guide to ...**

A common residential solar panel size is approximately 65 inches by 39 inches, and typically has a power output of around 300 watts. Larger panels, more common in ...



### [How to calculate solar panel wattage . NenPower](#)

To determine solar panel wattage accurately, you need to follow a systematic approach that takes into account several key factors. 1. Understand solar panels' ratings, 2. ...

### [Solar Panel Sizes & Dimensions \(SA\): Simply Explained](#)

Determine the number of solar panels you need:  
To calculate the number of solar panels, divide your annual energy usage by the power output of a single panel. For instance, if your home ...





### Solar Panel Sizes and Wattage Explained

To calculate the required system size, multiply the number of panels by the output. For example, a 6.6 kW solar system typically consists of 20 panels each delivering 330W of ...



### **Solar Panel Wattage Explained: How Many Watts Do You Need?**

Confused about solar panel wattage? Learn how many watts you need, how solar output works, and how to calculate the right solar setup for your home, RV, or cabin.



### **How to Choose Solar Panel Wattage for Home? , Greentumble**

Solar panel wattage ratings typically ranges from 250 to 400 watts for residential panels. Higher-wattage panels provide a greater energy output. As you can probably tell: one ...





## Understanding Solar Panel Sizes and Wattage: A Complete Tutorial

When considering solar panel sizes and wattage, you'll typically find options ranging from 250 to 400 watts. Opting for higher wattage units can be a game-changer, ...



### [Standard Solar Panel Sizes And Wattages \(100W-500W ...](#)

To bridge that gap of very useful knowledge needed, we have compared and averaged the sizes of 100-watt to 500-watt solar panels available on the market. The goal here is to get to the ...

## Contact Us

---

For catalog requests, pricing, or partnerships, please visit:  
<https://www.bringmethehorizon.eu>