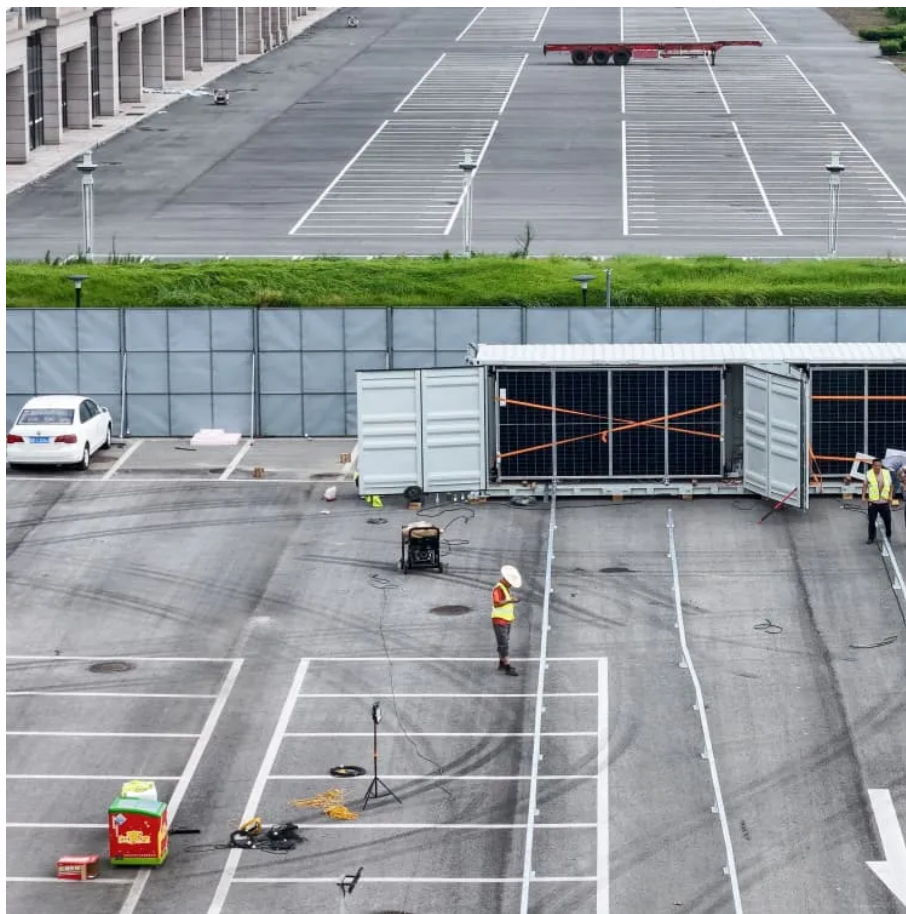




SolarMax Pro Energy Storage Systems

What is the BMS of the battery





Overview

A battery management system (BMS) is any electronic system that manages a rechargeable battery (cell or battery pack) by facilitating the safe usage and a long life of the battery in practical scenarios while monitoring and estimating its various states (such as state of health and state of charge), calculating.

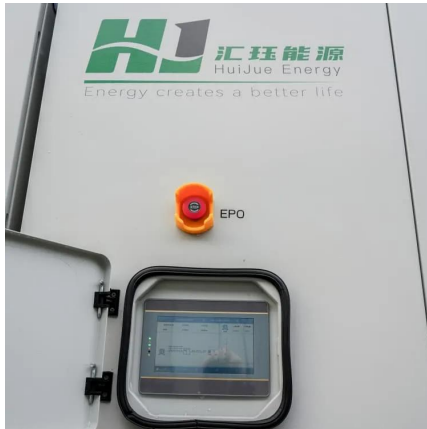
MonitorA BMS may monitor the state of the battery as represented by various items, such as: .

BMS technology varies in complexity and performance: • Simple passive regulators achieve balancing across batteries or cells by bypassing the.

- , , September 2014



What is the BMS of the battery



Definition BMS: What Is a Battery Management System and Why ...

3 days ago · Definition BMS: What Is a Battery Management System and Why It Matters With electric vehicles (EVs), renewable energy storage systems, and cutting-edge electronics at the ...

What is a Battery Management System (BMS)? A Complete ...

A Battery Management System (BMS) is an electronic system that manages and protects the battery pack within an electric vehicle. The system is responsible for monitoring ...



Battery management system

A battery management system (BMS) is any electronic system that manages a rechargeable battery (cell or battery pack) by facilitating the safe usage and a long life of the battery in ...

What is a BMS? What does it do and where is it located

BMS stands for Battery Management System. The BMS protects the cells from getting damaged



-- most commonly from over or under-voltage,
over current, high temperature or external short
...



Battery Management System

A battery management system (BMS) is defined as an essential component in a battery pack that monitors and controls the battery's temperature, voltage, and charging/discharging processes, ...



[The Complete Guide To A Battery Management System](#)

Lithium-ion batteries, especially custom lithium ion battery packs, need a BMS (Battery Management System) to ensure the battery is reliable ...



What Is a BMS Battery? A Complete Guide for Beginners and ...

BMS stands for Battery Management System. It is an electronic control unit that monitors, manages, and protects rechargeable batteries, especially lithium-ion battery packs.





What is a Battery Management System (BMS)? - How it Works

Battery management system (BMS) is technology dedicated to the oversight of a battery pack, which is an assembly of battery cells, electrically organized in a row x column matrix ...



Battery Management System (BMS) Detailed Explanation: ...

Battery Management System (BMS) is the "intelligent manager" of modern battery packs, widely used in fields such as electric vehicles, energy storage stations, and consumer ...

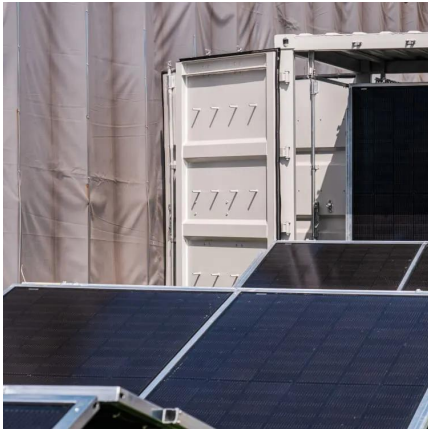
Battery BMS: Understanding the Basics and its Importance

Understanding the basics of a Battery BMS is essential for anyone working with batteries or considering implementing them into their operations. The components of a Battery BMS work ...



What Is a Battery Management System (BMS)?

Without proper management, issues such as overcharging, deep discharging, thermal runaway, and cell imbalance can severely impact safety, lifespan, and performance. ...



What is a Battery Management System (BMS)? Essential Guide ...

Did you know a battery management system (BMS) protects cells from dangerous conditions that can trigger thermal runaway and combustion? This vital technology guards ...

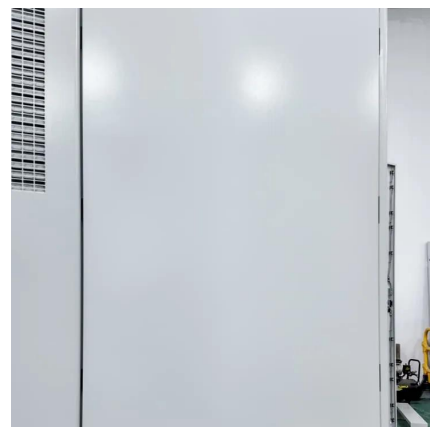


Battery Management System (BMS) in Battery Energy Storage ...

Learn about the role of Battery Management Systems (BMS) in Battery Energy Storage Systems (BESS). Explore its key functions, architecture, and how it enhances safety, ...

[What is a BMS? What does it do and where is it located](#)

BMS stands for Battery Management System. The BMS protects the cells from getting damaged -- most commonly from over or under-voltage, over current, high temperature or external short ...





Understanding the Role of a Battery Management System ...

The battery -- a crucial element that determines the performance, safety, and efficiency of the EV -- is at the core of these cars. The battery management system (BMS) is a sophisticated ...

Battery Management Systems (BMS)

A Battery Management System (BMS) is an electronic system that manages and monitors rechargeable batteries, ensuring their safe and efficient operation. It consists of hardware and ...



What is a Battery Management System (BMS)? - ...

Battery management system (BMS) is technology dedicated to the oversight of a battery pack, which is an assembly of battery cells, electrically organized in a ...

Understanding Battery Management Systems: The Key to ...

A BMS ensures that the battery operates within safe limits, preventing overcharging and deep discharging, which can lead to battery damage or failure. Why is a ...



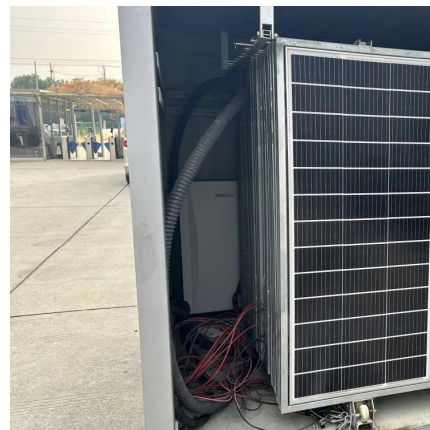
What Is A Battery Management System (BMS)?

What Does a BMS Do? A Battery Management System (BMS) is primarily responsible for monitoring and managing a battery's performance. It ensures that a battery ...



Fundamental Understanding of a Battery Management ...

A Battery Management System (BMS) is an electronic system that manages and monitors the charging and discharging of rechargeable ...



Battery Management System for Electric Vehicles: ...

Explore the vital role of battery management systems for electric vehicles and their benefits and stay updated on the latest trends in automotive ...





What Does BMS Mean? A Comprehensive Guide

In this battery management system, one central BMS is connected to all battery packs directly. This system offers several benefits, such as it is the most ...



Battery Management Systems (BMS): A Complete Guide

What is a Battery Management System (BMS)? A Battery Management System (BMS) is an electronic system that manages a rechargeable battery by monitoring its state, ...

Contact Us

For catalog requests, pricing, or partnerships, please visit:
<https://www.bringmethehorizon.eu>