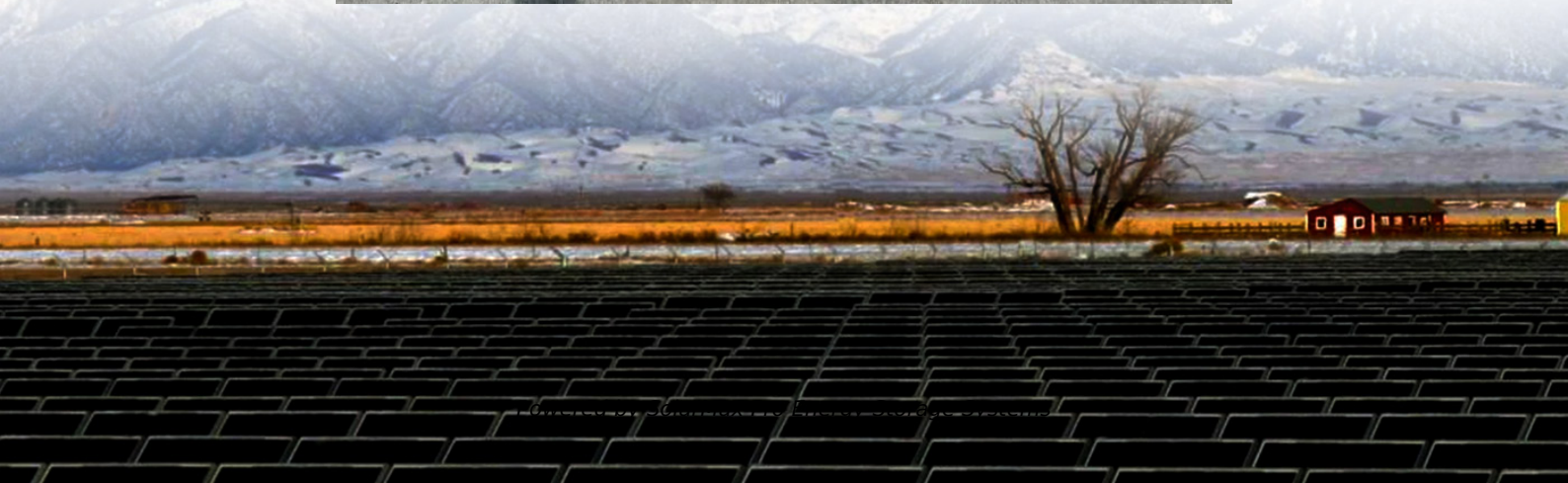




SolarMax Pro Energy Storage Systems

What inverter should I use to convert 36V to 220V on a construction site





Overview

Modified Sine Wave Power Inverter This inverter type is a reliable, economical choice for running most devices and fundamental household appliances. It costs less t.

What voltage does a 36V Inverter Supply?

The standard output voltage is 230 Volt, 50Hz with a pure sine wave. This means that this inverter supplies the same type of voltage as the wall socket. This allows any electrical device to work on it. What should you be aware of?

When choosing the right 36V inverter, these are the three most important points to consider:.

How do I choose the right inverter size?

Here is our last bit of advice on how to select the correct inverter size: Check our inverter size chart. List all your appliances in the function of their power output. Apply our inverter size formula. Do not exceed 85% of your inverter's maximum power continuously. Oversize your inverter for extra appliances in the future.

How to choose a power inverter?

Second, select an inverter. For this example, you will need a power inverter capable of handling 4500 watts. The continuous power requirement is actually 2250 but when sizing an inverter, you have to plan for the start up so the inverter can handle it. Third, you need to decide how long you want to run 2250 watts.

How much power does an inverter need?

The continuous power requirement is actually 2250 but when sizing an inverter, you have to plan for the start up so the inverter can handle it. Third, you need to decide how long you want to run 2250 watts. Let's say you would like to power these items for an eight-hour period.

What are the different solar inverter sizes?



Solar generators range in size from small generators for short camping trips to large off-grid power systems for a boat or house. Consequently, inverter sizes vary greatly. During our research, we discovered that most inverters range in size from 300 watts up to over 3000 watts. In this article, we guide you through the different inverter sizes.

What type of inverter do I Need?

Also, keep in mind. A 24-volt, 36-volt, or 48-volt inverter is a good choice for equipment using over 3,000 watts. You can use regular or flexible connectors to connect the inverter to the battery bank, but remember that the thinner the wire, the higher the resistance.



What inverter should I use to convert 36V to 220V on a construction



[WZRELB 6000W 36V Pure Sine Inverter Review](#)

The WZRELB 6000W 36V Pure Sine Wave Inverter is a powerful tool for converting direct current (DC) from a 36-volt battery system into alternating current (AC) at 120V or 240V.

Beginner's Guide to Power Inverters

All About Power Inverters & DC to AC Solar Inverter Products & Power Inverters 12v to 240v for Battery Systems. Learn about Power Inverters for Camping & ...



[Hybrid Powerful inverter 36v to 220v for Varied Uses](#)

Find reliable inverter 36v to 220v solutions for your power needs. Shop top-quality inverters from trusted suppliers. Enjoy pure sine wave and efficient conversion.

36V To 240V Inverter

A 36v to 220v inverter is a device that accepts a 36v DC input and converts it to a 220v AC output, suitable for powering various electrical



appliances. This type of inverter is especially ...

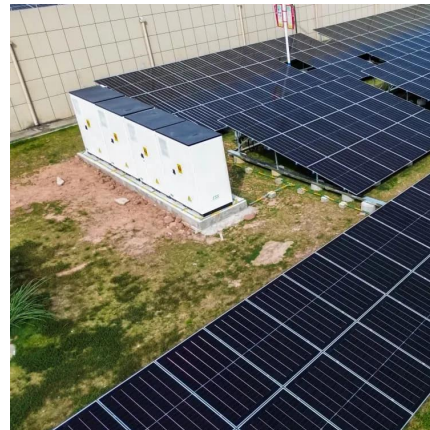


[Calculate Battery Size For Any Size Inverter \(Using ...](#)

So I have made it easy for you, use the calculator below to calculate the battery size for 200 watt, 300 watt, 500 watt, 1000 watt, 2000 ...

What Size Inverter To Charge E-Bike Battery? [With Size Chart]

What Size Inverter To Charge E-Bike Battery?
Larger battery needs a larger inverter. For a 36V 14A Battery you would need a maximum of 500W inverter. If your battery is 52V 19.2A then ...



How many volts inverter do I need for a 36v solar panel?

To summarize, when selecting an inverter for a 36V solar panel, it's essential to ensure voltage compatibility, account for total power requirements, select the appropriate ...



WZRELB 6000W 36V Pure Sine Inverter Review

The WZRELB 6000W 36V Pure Sine Wave Inverter is a powerful tool for converting direct current (DC) from a 36-volt battery system into alternating current (AC) at 120V or 240V. ...



Inverter 36V

A 36V inverter is a device that transforms direct current (DC) into alternating current (AC). Typically, these inverters are utilized for smaller to medium-sized applications where a reliable ...

What size inverter should I buy? (and Formula to convert Amps to ...

Short Answer: The size you choose depends on the watts (or amps) of what you want to run (find the power consumption by referring to the specification plate on the appliance or tool). We ...



RYOBI 36V Power Station Inverter (RPH361800) review by ...

Mighty Car Mods' Marty and Moog put the new RYOBI 36V Power Station Inverter through its paces. It's great to take camping for charging phones and laptops and even power TVs.



Amazon : Convertisseur 36v 220v

36V 16.6A 600W Alimentation Transformateur, Alimentation à découpage Adaptateur, 220V CA à 36V CC Transformateur Convertisseur, Alimentation pour LED Bande lumineuse, Machine, ...



[Trying to run mini Split off inverter at 220V..](#)

I am sorry. I missed that those were single phase inverters. I would try to find a split phase inverter. Trying to use 120V from two sources to obtain 240V would only work if you ...

[36V to 12V then inverter to 220-240V AC : r/OffTheGrid](#)

I am salvaging scooter batteries that are 36V but 36V to 220V inverters are not as readily available so is it possible to Have a 36V battery pack use a transformer to output 12V then use ...





Amazon : 36v Inverter

WZRELB Split Phase Power Inverter 3000W 36V Pure Sine Wave Inverter, Peak 6KW, 36VDC to 120V/240VAC, High Efficiency up to 91.6%, LCD Display, high Frequency Inverter for Off Grid ...

How many volts inverter do I need for a 36v solar panel?

To summarize, when selecting an inverter for a 36V solar panel, it's essential to ensure voltage compatibility, account for total power ...



What inverter should I use to convert 36v to 220v

If you need to convert power supply 36V to 220V, you need to use an inverter. When choosing an inverter, one thing is that the input voltage must match the actual voltage.



36v UPS battery construction

It runs off 36v (3 x 12v 7Ah SLA internal, 6 x 7Ah SLA in external battery module - BPSE36V45A) and seems to have a float voltage of 41v (measured at the EBM port).



[Trying to run mini Split off inverter at 220V..](#)

I am sorry. I missed that those were single phase inverters. I would try to find a split phase inverter. Trying to use 120V from two sources to obtain ...



Amazon : 220 Volt Inverter

PowMr 4200W Solar Inverter 24VDC to 220V/230VAC, Pure Sine Wave All in One Hybrid Inverter with Built-in 120A MPPT Controller, for Home RV Off-Grid System, for 24V Lead Acid and ...



[3600W PowerVerter APS 36VDC 120V ...](#)

The APS3636VR 3600W PowerVerter APS 36V DC 120V AC Inverter/Charger is a reliable power source for a wide variety of equipment ranging from power ...





Contact Us

For catalog requests, pricing, or partnerships, please visit:
<https://www.bringmethehorizon.eu>