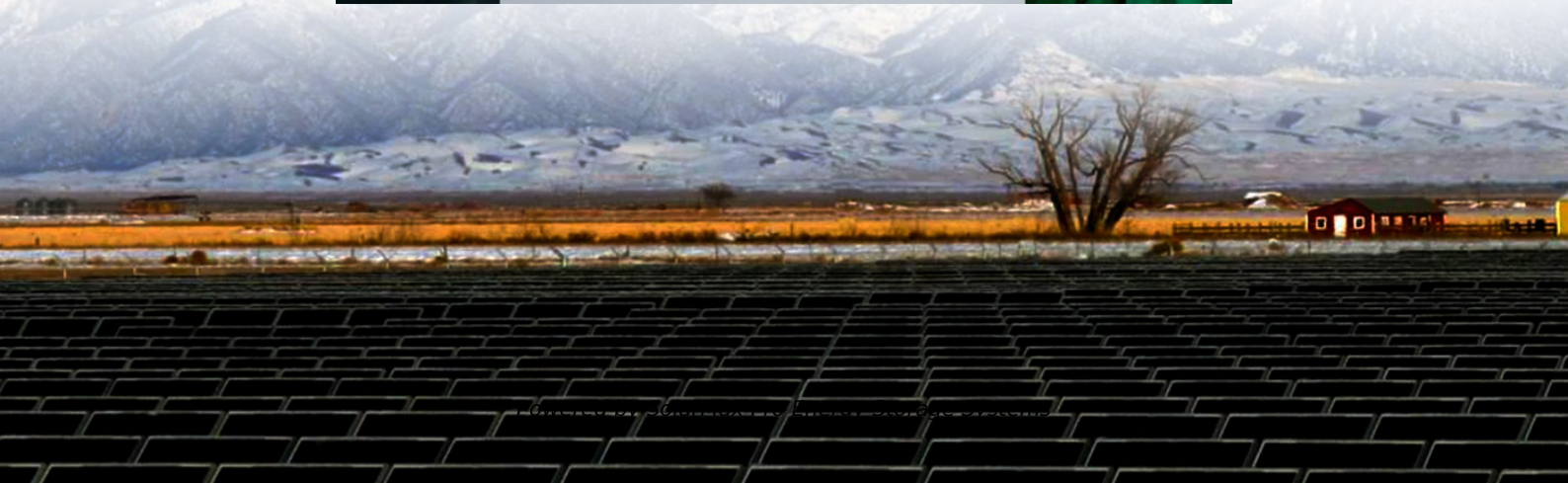




SolarMax Pro Energy Storage Systems

What are the base station equipment for communication engineering





Overview

Equipped with an electromagnetic wave antenna, often placed on a tall mast, the base station enables communication between mobile terminals (such as mobile phones or pagers) and the fixed part of the digital telecommunications network. What is a base station in a telecommunications network?

A base station is a critical component in a telecommunications network. A fixed transceiver that acts as the central communication hub for one or more wireless mobile client devices. In the context of cellular networks, it facilitates wireless communication between mobile devices and the core network.

What equipment does a base station need?

Control Equipment: Base stations include control equipment that manages the communication protocols and coordinates the interaction between mobile devices and the network. This equipment ensures that data is routed correctly and efficiently. **Power Supply:** A reliable power supply is essential for the continuous operation of a base station.

What does a base station do?

Base stations are responsible for transmitting and receiving data to and from wireless devices, as well as managing network resources and ensuring reliable and efficient communication. The basic function of a base station is to convert wireless signals into digital signals that can be transmitted over a wired network infrastructure.

Why are base stations important for modern telecommunications?

In summary, base stations are critical for modern telecommunications as they serve as the link between mobile devices and the extensive network infrastructure that spans the globe. The strategic deployment and ongoing improvement of these stations are essential for maintaining global connectivity.

How does a wireless device communicate with a base station?



When a wireless device, such as a mobile phone, communicates with a base station, the device sends a signal to the base station, which converts the signal into digital form and sends it to the network. Similarly, when the network sends data to the device, the base station converts the digital data into a wireless signal that the device can receive.

How does a base station communicate with a client device?

Generally, if client devices wanted to communicate to each other, they would communicate both directly with the base station and do so by routing all traffic through it for transmission to another device. Base stations in cellular telephone networks are more commonly referred to as cell towers.



What are the base station equipment for communication engineering



Understanding the Basics: What is a Base ...

In today's digitally connected world, understanding the technology that makes communication possible is more important than ever. One key ...

The Base Station in Wireless Communications: The ...

Equipped with an electromagnetic wave antenna, often placed on a tall mast, the base station enables communication between mobile terminals ...



What Is A Base Transceiver Station (BTS)?

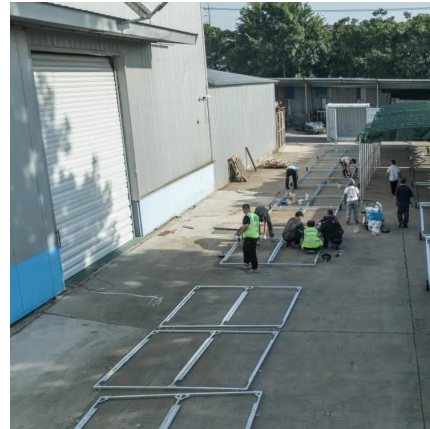
We will discuss the various components that make up a BTS, including transceivers, amplifiers, and combiners, and the importance of their installation and maintenance.

What is a Base Station in Telecommunications?

Discover the role and functionality of a base station in telecommunications networks. Learn



how these critical components manage communication between mobile devices and the network, ...



[Architecture of a General Cellular Communication ...](#)

In this post, we will have a look at what cellular communication entails. We will take an in-depth look at the architecture of a general cellular ...



BS (Base Station)

Base stations are typically designed as a set of hardware and software components that work together to provide wireless communication services. The hardware components of ...



What Is A Base Station?

A base station is a piece of equipment that facilitates wireless communication between devices and a network. It contains the necessary hardware and software to transmit ...



Power Base Station

Base station power refers to the output power level of base stations, which is defined by specific maximum limits (24 dBm for Local Area base stations and 20 dBm for Home base stations) ...

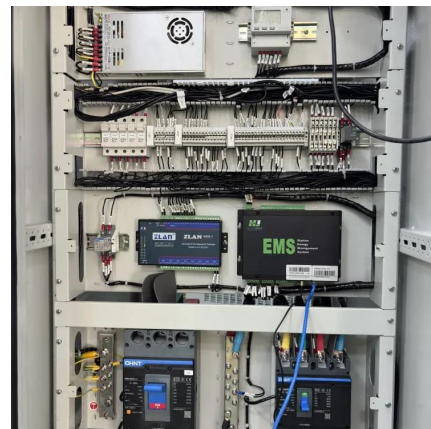


Base Station Design for Wireless Communications Engineers

Effective base station design ensures robust coverage, high capacity, and optimal performance. Key components of a base station include antennas, transceivers, and power supplies.

The Base Station in Wireless Communications: The Key to ...

Equipped with an electromagnetic wave antenna, often placed on a tall mast, the base station enables communication between mobile terminals (such as mobile phones or ...



Communication Base Station Site Planning Based on Improved ...

With the sharp development of mobile communication technology, the coverage area of existing base stations cannot meet the increasing demand of users, so it is significant to establish a ...



Wireless Communication Base Station Location Selection ...

1. Introduction Recently, with the rapid development of wireless communication technology, the enhancement of wireless network performance is concerned with meeting the ...



Securing UAV Flying Base Station for Mobile Networking: A ...

A flying base station based on an unmanned aerial vehicle (UAV) uses its mobility to extend its connectivity coverage and improve its communication channel quality to achieve ...

Cellular Networks, Base Stations, and 5G RAN

A user's mobile telephone communicates through the air with an base station antenna, which in turn links to the central exchange of the operator - a computer. This routes ...





What is a base station?

In telecommunications, a base station is a fixed transceiver that is the main communication point for one or more wireless mobile client devices. A base station serves as ...

What is a Base Station in Telecommunications?

Discover the role and functionality of a base station in telecommunications networks. Learn how these critical components manage communication ...



Basestation

The base station is a transceiver and acts as an interface between a mobile station and network using microwave radio communication. It consists of three part elements: one or more ...

base transceiver station function

The Base Transceiver Station (BTS) is a crucial component in a mobile network, primarily in GSM (Global System for Mobile Communications) and other cellular technologies. ...



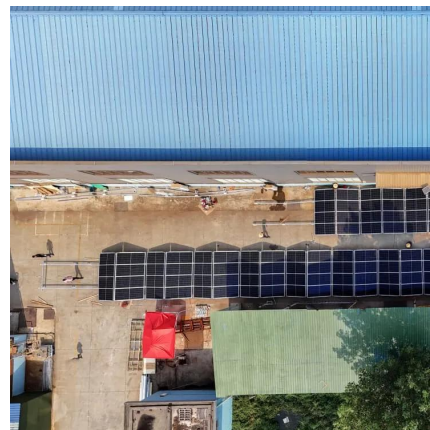
[Understanding BTS \(Base Transceiver Station\) in ...](#)

In the realm of telecommunications, particularly within cellular networks, the term BTS or Base Transceiver Station plays a pivotal role in facilitating wireless communication between user ...



Communications equipment base-station-equipment , Facebook

Communications equipment, recycling and sales
Buying and selling base station equipment
Buying and selling communications engineering equipment
Communications accessories ...



[\(PDF\) Accurate Base Station Placement in 4G LTE ...](#)

Cellular mobile communication network planning and optimization involve a complex engineering process that deals with network fundamentals, ...





5G Base Station Prototyping: Architectures Overview

The implementation of 5G technologies is associated with a number of difficulties, including the cost of upgrading the infrastructure of mobile operators. Therefore the introduction of different ...



Contact Us

For catalog requests, pricing, or partnerships, please visit:
<https://www.bringmethehorizon.eu>