



SolarMax Pro Energy Storage Systems

What are the 5G digital power base stations





Overview

What is a 5G base station?

As the world continues its transition into the era of 5G, the demand for faster and more reliable wireless communication is skyrocketing. Central to this transformation are 5G base stations, the backbone of the next-generation network. These base stations are pivotal in delivering the high-speed, low-latency connectivity that 5G promises.

How much power does a 5G base station use?

Each nation has a different 5G strategy. For 5G, China uses 3.5GHz as the frequency. Then, a 5G base station resembles a 4G system, but it's on a much larger scale. For sub-6GHz in 5G, let's say you have a macro base station. The power levels at the antenna range from 40 watts, 80 watts or 100 watts.

What are the advantages of a 5G base station?

Massive MIMO: The use of a large number of antennas allows the base station to serve multiple users simultaneously by forming multiple beams and spatially multiplexing signals. **Modulation Techniques:** 5G base stations support advanced modulation schemes, such as 256-QAM (Quadrature Amplitude Modulation), to achieve higher data rates.

Can a 5G base station be installed at ground level?

Many 5G base stations are being deployed at existing LTE sites. Each tower has a loading factor that defines the maximum weight of the radios and antennas that can be mounted. Due to legacy hardware on the tower, the radio may be required to be installed at ground level and only the antenna is tower mounted.

What is a 5G power amplifier?

The power amplifier device is a key component that boosts the RF power signals in base stations. It's based on two competitive technologies, silicon-



based LDMOS or RF gallium nitride (GaN). GaN, a III-V technology, outperforms LDMOS, making it ideal for the high-frequency requirements for 5G. But GaN is expensive with some challenges in the fab.

How much power does a 5G antenna use?

For sub-6GHz in 5G, let's say you have a macro base station. The power levels at the antenna range from 40 watts, 80 watts or 100 watts. On the RRH board, you have various devices such as power amps, low-noise amplifiers (LNAs), transceivers and others. The RF process is complex with several steps.



What are the 5G digital power base stations



The 5G Base Stations: All Technologies On Board

Virtually all macro cellular base stations today are powered by LDMOS RF power transistors and RFICs, as they deliver an excellent combination of high RF output power, efficiency, gain, and ...

Selecting the Right Supplies for Powering 5G Base Stations

These next-generation radios that incorporate integrated transceivers and low noise, high power microwave/millimeter wave PAs with wider bandwidths come with digital control and ...



Base Station Transmits: 5G

The goal of Base Station Transmits is to discuss challenges faced by engineers and technicians who must optimize today's wireless networks. Topics include antenna systems, ...

RF Front End Design for 5.5G and 6G Base Station ...

While 4G base stations for a remote radio head with 4 to 8 transmit sections using power



amplifiers with average output power greater ...



[Powering 5G Infrastructure with Power Modules , RECOM](#)

Discover power module solutions for 5G infrastructure delivering high power density, efficiency, and reliability for base stations and small cell deployments.

Comparison of Power Consumption Models for 5G Cellular Network Base

Furthermore, the base stations dominate the energy consumption of the radio access network. Therefore, it is reasonable to focus on the power consumption of the base stations ...



Power Amp Wars Begin For 5G

Demand is increasing for power amplifier chips and other RF devices for 5G base stations, setting the stage for a showdown among different companies and technologies. The ...



Selecting the Right Supplies for Powering 5G Base Stations

These next-generation radios that incorporate integrated transceivers and low noise, high power microwave/millimeter wave PAs with wider bandwidths come with digital control and ...



Why does 5g base station consume so much power and how to ...

The power consumption of the 5G base station mainly comes from the AU module processing and conversion and high power-consuming high radio frequency signals, the ...

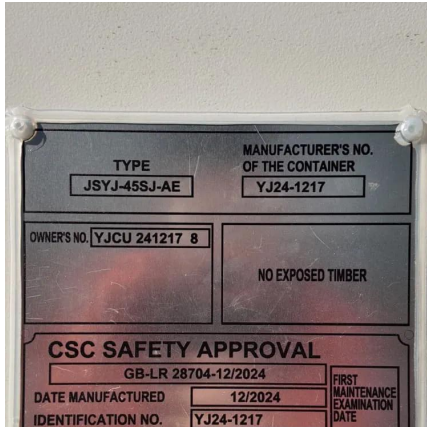
What Is A Base Station?

A base station is an integral component of wireless communication networks, serving as a central point that manages the transmission and reception of signals between ...



[TB4 TETRA Hybrid base station , Airbus](#)

TB4 is a hybrid base station, with both TETRA and 4G/5G technologies in one base station. This allows operators flexibility - TB4 offers smooth evolution to ...



Powering 5G Infrastructure with Power Modules

Discover power module solutions for 5G infrastructure delivering high power density, efficiency, and reliability for base stations and small cell ...



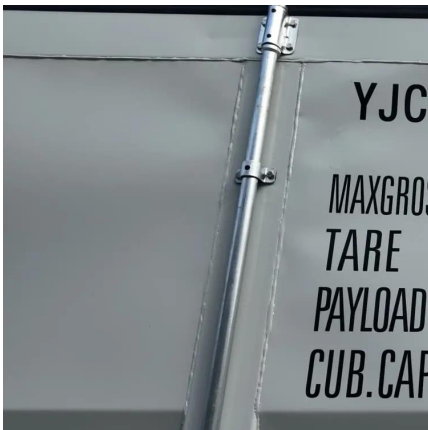
5G Base Station Complexity Drives the Need for Low ...

Existing 4G base stations can use up to four transmitter and four receiver elements per array (4x4 MIMO). In contrast, 5G is expected to use up to 64 ...

Murata-Base-station-app-guide

Moving up the mast In the era of 4G, network installations typically relied upon heavy duty infrastructure such as large power masts and passive cables and antennas, with much of the ...



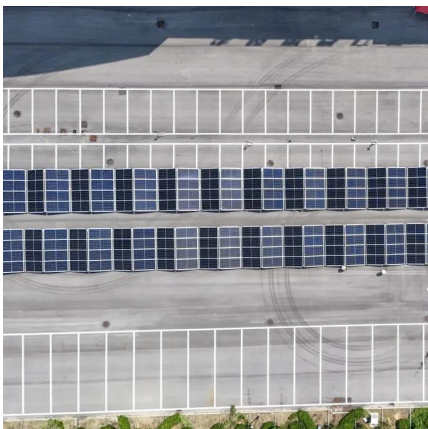


5G Energy Efficiency Overview

Base station resources are generally unused 75 - 90% of the time, even in highly loaded networks. 5G can make better use of power-saving techniques in the base station part, ...

base station in 5g

Antenna Arrays: 5G base stations typically use advanced antenna arrays, such as Massive MIMO (Multiple Input Multiple Output). Massive MIMO involves using a large number ...



5G Network Equipment Manufacturers: Modem, Base Station, ...

Explore leading 5G equipment manufacturers for modems, base stations, RAN, and core networks. Discover vendors enhancing network speed and efficiency.

Powering 5G

Traditional high-power base stations can leave 'black spots' with no signal, and, with the higher frequencies utilised in 5G, currently around 4GHz, the problem is potentially ...



[A Design and Implementation of High-Efficiency ...](#)

Utilizing asymmetric Doherty technology, this paper designs a high-efficiency radio frequency (RF) power amplifier (PA) for 5G base station ...



5G Base Station Complexity Drives the Need for Low-EMI DC/DC ...

Existing 4G base stations can use up to four transmitter and four receiver elements per array (4x4 MIMO). In contrast, 5G is expected to use up to 64 transmitter and 64 receiver massive-MIMO ...



[Power Consumption Modeling of 5G Multi-Carrier Base ...](#)

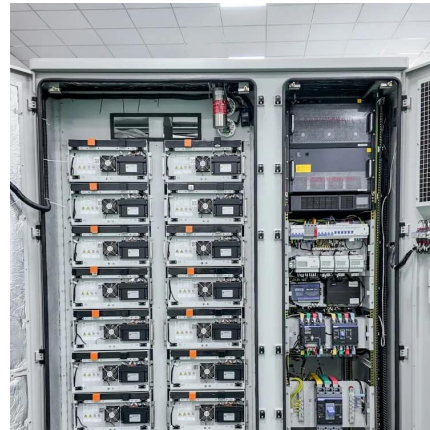
However, there is still a need to understand the power consumption behavior of state-of-the-art base station architectures, such as multi-carrier active antenna units (AAUs), as well as the ...





5G Base Station Chips: Driving Future Connectivity by 2025

As 5G networks become the backbone of modern communication, 5G base station chips are emerging as a cornerstone of this transformation. With projections showing ...



Quick guide: components for 5G base stations and antennas

Base stations A 5G network base-station connects other wireless devices to a central hub. A look at 5G base-station architecture includes various equipment, such as a 5G ...

Cradle to the Grave: Sustainability and the Life of a ...

More than 1,000 4G and 5G base stations are "born" every day inside Nokia's factory in Oulu, close to the Arctic Circle in northern Finland. ...



What is a 5G Base Station?

Central to this transformation are 5G base stations, the backbone of the next-generation network. These base stations are pivotal in delivering the high-speed, low-latency ...



Contact Us

For catalog requests, pricing, or partnerships, please visit:
<https://www.bringmethehorizon.eu>