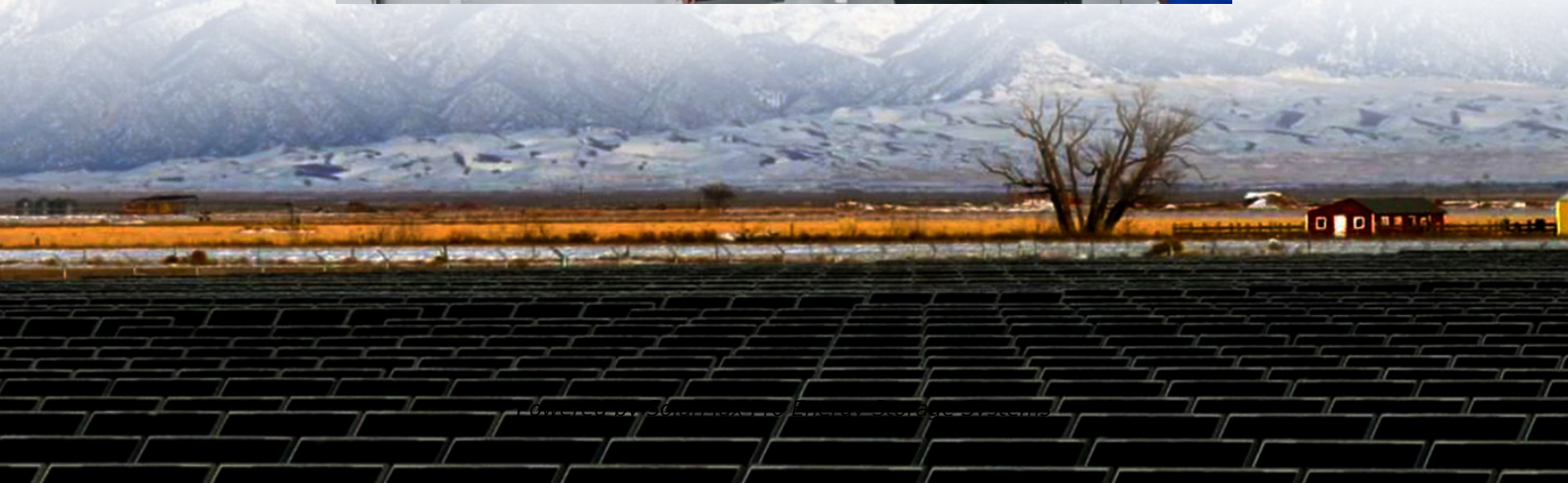




SolarMax Pro Energy Storage Systems

Technical parameters of communication base station EMS





Overview

Is there a standard for a base station antenna?

The BSA's influence on coverage, capacity, and QoS is extensive, and yet there exists no comprehensive, global, standard focusing on the base station antenna. The purpose of this whitepaper is to address this gap. In particular, the following topics will be covered in various degrees of detail:.

How should a base station be able to accomodate multiple base stations?

Accommodate multiple base stations in the same service area. Allow handover from one channel to another between cells, and in the same cell, if necessary. Allow for implementation of small cell sizes taking into account the need for rapid handover for moving users.

How many edge carriers can a base transceiver station provide?

It shall be possible to provide at least one EDGE carrier per sector in the same Base Transceiver Station. In case of EDGE, both Incremental redundancy and Dynamic Downlink diversity shall be supported. It shall be possible to use the same Base Transceiver Station to provide at least one WCDMA carrier with the addition of suitable HW/SW units.

What is the operating environment of a base station antenna?

The operating environment of base station antennas is classified as remote, stationary, outdoor, uncontrolled and not weather-protected. The electromagnetic environment includes close proximity to intentionally radiating devices and installation on structures prone to lightning strikes.

Can a base transceiver station provide a WCDMA carrier?

It shall be possible to use the same Base Transceiver Station to provide at least one WCDMA carrier with the addition of suitable HW/SW units. The system shall be upgradeable for handover between GSM and WCDMA handsets. 2.



What is a BSS radio interface?

The BSS radio interfaces shall support a flexible service creation and execution platform allowing operator and user specific services to be easily created. Voice-band data signals supported by the system shall be transmitted with a quality as per ITU-T Recommendation G.174. An example of voice-band data is Group 3 facsimile (upto 9600 Bps).



Technical parameters of communication base station EMS

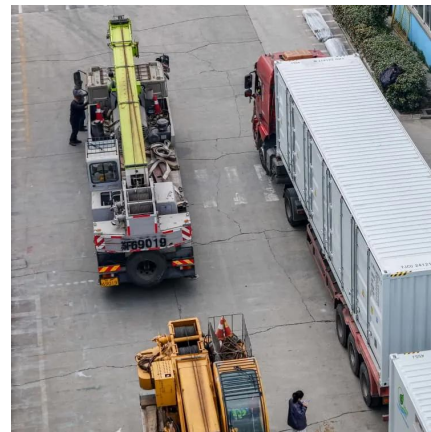


[Chapter 5: Communication Flashcards . Quizlet](#)

Study with Quizlet and memorize flashcards containing terms like What is Base Station in EMS?, What is a Land Mobile Radio System?, What is a portable radio? and more.

Types and Applications of Mobile Communication Base Stations

Mobile communication base station is a form of radio station, which refers to a radio transceiver station that transmits information between mobile phone terminals through a ...



[Base station technical parameters. . Download ...](#)

Investing in the communication infrastructure transition requires significant scientific consideration of challenges, prioritisation, risks and uncertainties. To ...

[Recommendations on Base Station Antenna Standards v11.1](#)

Abstract This whitepaper addresses the performance criteria of base station antennas, by

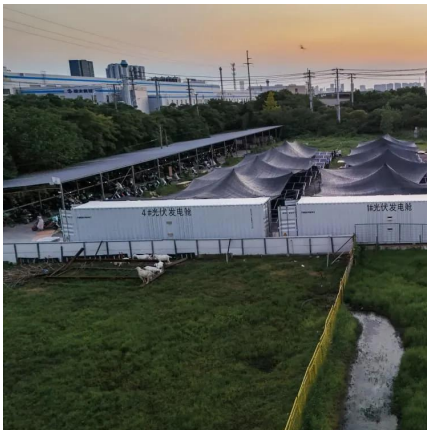


making recommendations on standards for electrical and mechanical parameters, by providing ...



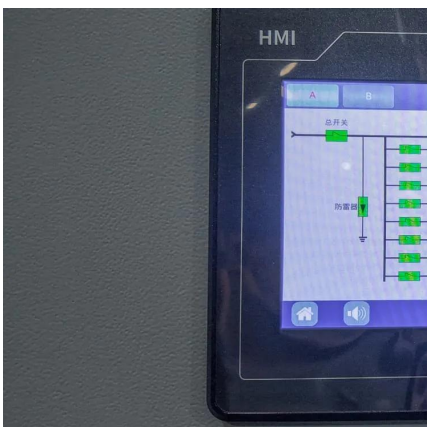
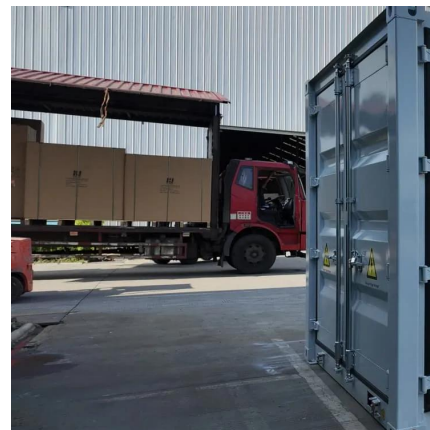
Base Station Sub-system (BSS)

All base stations shall be supervised for proper operation of base station system, signalling channel, traffic channel etc. When a fault occurs in the system, alarms (both audio and visual ...



Utility-scale battery energy storage system (BESS)

Introduction Reference Architecture for utility-scale battery energy storage system (BESS) This documentation provides a Reference Architecture for power distribution and conversion - and ...



Base Station Antennas for the 5G Mobile System

The fifth-generation (5G) mobile communication system will require the multi-beam base station. By taking into account millimeter wave use, any antenna types such as an array, reflector and ...



Base stations placement optimization in wireless networks for ...

In this paper a method is presented for calculating the optimal proportion of the two station types and their optimal placement. Random scenarios and a real example from Hurricane Katrina ...



[Powering 5G Radio Access Networks \(RAN\)](#)

The RAN is made up of base stations/antennas that provide wireless communication creating a Heterogeneous Network (HetNet) over a specific geographic region. 5G RAN has evolved to ...

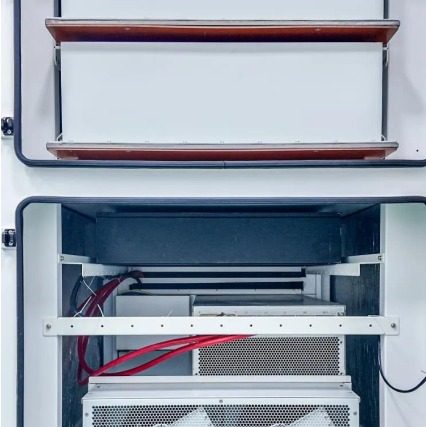
Microsoft Word

Sometimes, the base station is operated in the duplex mode, however, in EMS the portable or mobile radio is often operated in the duplex mode, and the base station at the ...



[\(PDF\) Accurate Base Station Placement in 4G LTE ...](#)

The authors looked at the placement of various user distributions in the target area after selecting the parameters used for input and the number ...



AntennaNet: Antenna Parameters Measuring Network for Mobile

In the field of measuring parameters of mobile communication base station antenna, most of its methods share some deficiencies to a different extent. The traditional ones suffer from inferior ...



AntennaNet: Antenna Parameters Measuring Network for Mobile

In the field of measuring parameters of mobile communication base station antenna, most of its methods share some deficiencies to a different extent. The traditional ...

[Design Parameters at the Base Station](#)

Use the link below to share a full-text version of this article with your friends and colleagues. Learn more. This chapter contains sections titled:





[Chapter 5 Objectives Flashcards , Quizlet](#)

Discuss the purposes and characteristics of each component of a typical EMS communication system. Base station - A dispatch and coordination center. Land mobile radio systems - Land ...

Base station technical parameters. , Download Scientific Diagram

Investing in the communication infrastructure transition requires significant scientific consideration of challenges, prioritisation, risks and uncertainties. To address these challenges, a



[Technical and Regulatory Specifications for BTS ...](#)

Having discussed extensively on the technical specification for the installation of Base Transceiver Station, it is vital to therefore discuss the ...

TR 103 877

The present document presents the justification for the selection of the technical requirements within the Harmonised Standard for Base Stations under the guidance of ETSI EG 203 336 [i.2].



Contact Us

For catalog requests, pricing, or partnerships, please visit:
<https://www.bringmethehorizon.eu>