



SolarMax Pro Energy Storage Systems

Structure of wind power generation system





Structure of wind power generation system



How a Wind Turbine Works

Made from tubular steel, the tower supports the structure of the turbine. Towers usually come in three sections and are assembled on-site. Because wind speed increases with height, taller ...

[Wind Power Plant: Diagram, Parts, Working & Advantages](#)

In this post, you will learn about the wind power plant and its diagram, working, the importance of wind energy, advantages, application and more. Also, you can download the ...



[A Visual Breakdown: How Wind Turbine Systems Work](#)

Learn about the components and workings of a wind turbine system with our informative wind turbine diagram. Explore how wind energy is converted into electricity.



[Wind Photovoltaic Storage renewable energy generation](#)

The collection station of this project is equipped with a set of cogeneration power plant control



system (Cogeneration PPC) composed of wind power generation system, photovoltaic power ...



How Electricity is Generated

Parts of an Offshore Wind Power Generation System Wind Tower Generator Foundations & Substructions: These are the structures that support the offshore wind turbines. ...

PERFORMANCE ANALYSIS OF A HYBRID SOLAR-WIND...

s production is impossible without a hybrid renewable energy system. In order to produce electrical energy, this study foc ses on the usage of wind turbines and solar photovoltaic ...



Schematic Diagram of Wind Turbine

A schematic diagram of a wind turbine provides a visual representation of its essential components and how they work together to harness wind energy. A wind turbine's ...



Basic Construction of Wind Turbine

This page shows and describes the major parts of a wind turbine including its supporting towers, nacelle, rotor blades, shaft, gearbox, generator, power converters, ...



[Energy Conversion Lecture Notes: Wind Energy](#)

Mechanical inefficiencies in the rest of the system will also reduce the amount of power that can be extracted from the wind. The most power that can be extracted by the wind turbine can be ...

Development of an integrated structure of hydrogen and oxygen

One of the leading methods for long-term energy storage is the use of wind energy to liquefy hydrogen and oxygen. In this study, an integrated structure of hydrogen liquefaction ...



Wind turbine: what it is, parts and working , Enel Green Power

Read all about the wind turbine: what it is, the types, how it works, its main components, and much more information through our frequently asked questions.



Wind turbine: How it works, parts, and existing types

A wind turbine consists of various parts: Rotor: harvests the wind's energy usually with 3 blades connected to a shaft. When the wind blows, the rotor rotates, harnessing the ...



UNIT II

Introduction Wind power or wind energy is the use of wind to provide the mechanical power through wind turbines to operate electric generators. Wind power is a sustainable and ...

A Maximum Power Point Tracking Control Algorithms ...

This chapter deals with a comprehensive overview study of the direct-driven (DD) permanent magnet synchronous generator (PMSG) for ...





A Tutorial on the Dynamics and Control of Wind Turbines ...

In this paper, we first review the basic structure of wind turbines and then describe wind turbine control systems and control loops. Of great interest are the generator torque and blade pitch ...

Design and implementation of a wind solar hybrid power ...

The wind power generation device 2 is at least one, and each wind power generation device 2 adopts a wind power generation device with a specification of 12V. The battery group 4 is ...



Analysis of the control structure of wind energy generation systems

Abstract This paper presents the analysis of the two usual control structures for variable speed and fixed pitch wind energy generation systems, namely speed and torque ...

[A Visual Breakdown: How Wind Turbine Systems Work](#)

Learn about the components and workings of a wind turbine system with our informative wind turbine diagram. Explore how wind energy is converted into ...



Main Parts and Components of Wind Turbines: Structure, ...

Discover the essential wind turbine components with our detailed guide to the anatomy of wind turbines. Learn the main parts, structure, blade sections, electrical elements, ...



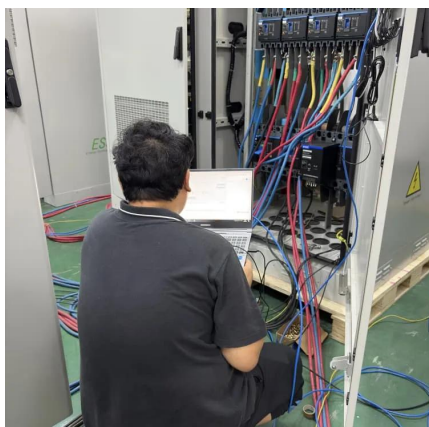
Power control of an autonomous wind energy conversion system ...

This makes the system a feasible solution for isolated, off-grid applications, contributing to advancements in renewable energy technologies and autonomous power ...



[Wind Power Plant: Diagram, Parts, Working](#)

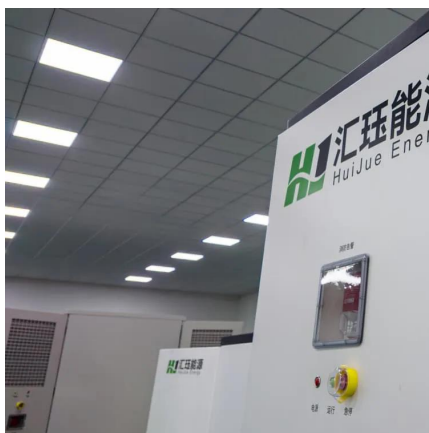
In this post, you will learn about the wind power plant and its diagram, working, the importance of wind energy, advantages, application and ...





Design of Off-Grid Wind-Solar Complementary Power Generation System ...

Abstract Wind power generation and photovoltaic power generation are one of the most mature ways in respect of the wind and solar energy development and utilization, wind ...



Wind turbine: what it is, parts and working , Enel Green Power

This page shows and describes the major parts of a wind turbine including its supporting towers, nacelle, rotor blades, shaft, gearbox, generator, power converters, ...

Main Parts and Components of Wind Turbines: ...

Discover the essential wind turbine components with our detailed guide to the anatomy of wind turbines. Learn the main parts, structure, blade ...



Contact Us

For catalog requests, pricing, or partnerships, please visit:
<https://www.bringmethehorizon.eu>