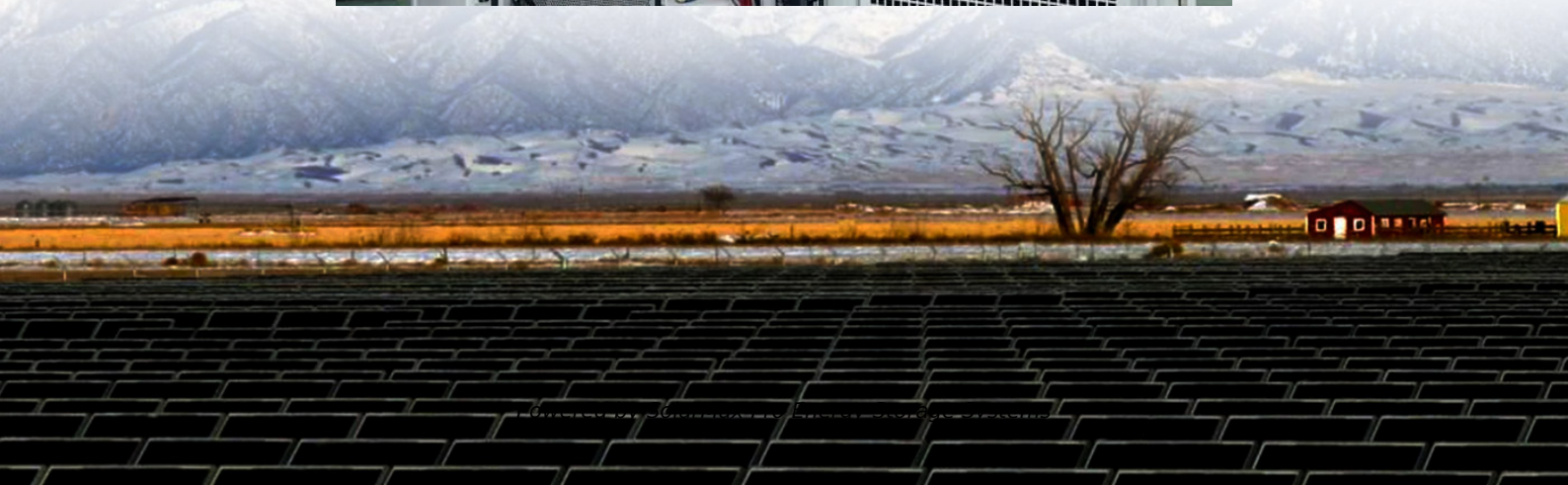




**SolarMax Pro Energy Storage Systems**

## **Size and dimensions of photovoltaic panel distribution box**





## Overview

---

What is a panelboard / distribution board?

In short, a panelboard or distribution board is a collection of protective devices such as circuit breakers, designed to safely control and distribute electrical power to various load points, including branch and final circuits. Terms used in the US: Panelboard, load center, breaker box, service panel, or main electric panel.

What are surge protection devices in solar panel junction boxes?

Surge protection devices in solar panel junction boxes help to protect connected electronic components from dangerous voltage fluctuations. These devices divert excess electricity away from the sensitive components within a junction box, making them crucial for maintaining the performance and longevity of a solar array.

What are combiner boxes & distribution boxes?

In solar power systems, combiner boxes and distribution boxes play critical roles in managing electricity flow and ensuring safety. While they might seem similar, understanding their unique functions and applications is essential for optimizing your solar installation.

How should load centers and distribution boards be sized?

Load centers and distribution boards should be sized in compliance with NEC, IEC, or other relevant regional codes. This process also involves selecting appropriately sized wires and cables, choosing the correct size of MCBs (Miniature Circuit Breakers), and calculating the ratings for plugs and outlets.

What is the difference between a combination box and a distribution box?

Combiner boxes streamline PV string management, while distribution boxes ensure safe AC power delivery. Always prioritize certified products with robust protection features to minimize downtime and maximize ROI. Need Help?



Consult a solar expert or manufacturer to tailor solutions for your project!.

What is the right size of load center or panelboard?

The suitable size of load center or main panel = 150 Amperes Based on the above calculations, the right size of load center or panelboard is 150A which is nearest available to the calculated value. Click image to enlarge



## Size and dimensions of photovoltaic panel distribution box

---

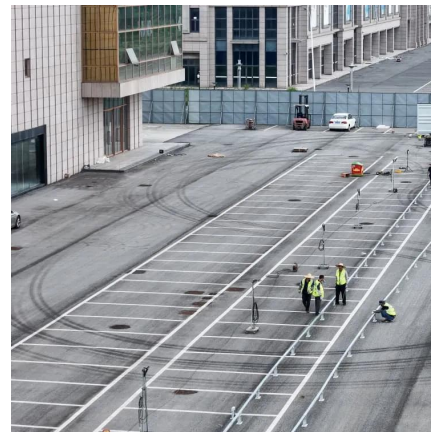


### Solar Panel Pallets - PVpallet

PVpallet's solar panel pallets, Series X and Series X.L, fit a range of panel sizes. These pallets are purpose-built with added features like protective sidewalls, a ...

### [Solar Combiner Box Essentials: Beginner's Guide](#)

Rapid Shutdown Device The rapid shutdown device is an electric safety requirement required for solar panel systems. It helps in de-energizing ...



### [Solar Panel Junction Box: Everything You Need to Know](#)

When selecting the appropriate junction box for a solar panel system, there are several key characteristics to consider in order to guarantee the safety and efficiency of the ...

### [Solar Panel Junction Box: Everything You Need to Know](#)

When selecting the appropriate junction box for a solar panel system, there are several key





characteristics to consider in order to guarantee  
...



### [How to Choose Solar DC & AC Electric Box-ONCCY](#)

Choosing between a combiner box and distribution box depends on your system's DC/AC requirements, scale, and environmental conditions. ...



### **How Do I Choose the Right Distribution Box for My Needs?**

Struggling with distribution box selection? Our guide covers sizing, key features, safety standards (UL/CE), and best outdoor materials. Make the right choice!



### [What are the specifications of solar distribution box?](#)

Selecting the appropriate solar distribution box involves considering several critical factors to ensure compatibility and safety for your solar power system. First and foremost, the ...





## How to choose the size of photovoltaic panel distribution box

now that there are limitations for series solar panel wiring. In the U.S., solar strings are required to feature a maximum voltage of 600V, so solar panels play an important role in photovoltaic (PV) ...



## [Solar Photovoltaic \(PV\) System Components](#)

Introduction Solar photovoltaic (PV) energy systems are made up of different components. Each component has a specific role. The type of component in the system depends on the type of ...

## [How to Choose the Right Combiner Box for Solar](#)

Learn how to choose the best combiner box for your solar system with tips on types, safety, expansion, and installation for all project sizes.



## [Solar Panels Sizes and Weights \(All Sizes\)](#)

On average, a solar panel can provide 15 watts per square foot. Let's start by breaking down the average dimensions of different solar panels by size.



## The Ultimate Guide to Solar Combiner Boxes: From Basics to ...

These boxes serve as a central hub for combining the outputs of multiple solar panel strings before they are connected to an inverter. Below are key aspects of their design ...



## What is a Solar Distribution Box?

Installation of Solar panels at the workplace, residence, or industry certainly helps combat the rising electricity bills and dependency on fossil fuels. In this blog, you will discover ...

## [PV Combiner Boxes: Organizing Solar Connections](#)

PV Combiner Boxes: Organizing Solar Connections PV combiner boxes play a crucial role in solar installations, efficiently organizing and protecting the ...





### [How to Size Main Panel, Load Center, and Consumer Unit?](#)

In today's step-by-step guide, we will demonstrate how to select the right size panelboard (whether it's a load center, distribution board, or circuit breaker panel) according to NEC and ...

### [How to Choose Solar DC & AC Electric Box-ONCCY](#)

Choosing between a combiner box and distribution box depends on your system's DC/AC requirements, scale, and environmental conditions. Combiner boxes streamline PV ...



### **Size and dimensions of photovoltaic panel distribution box**

Size and dimensions panel distribution box of photovoltaic panel size can refer to the panel's physical dimensions. You'll want to ensure the panels fit snugly on your converting sunlight ...

### [Solar Panel Size & Weight Guide - Find the Right Fit](#)

Learn about solar panel size, dimensions, and weight. Find the perfect panel for your needs and see if your roof can support a solar system.





### **IP65 Distribution Box SHA Series**

The IP65 Distribution Box is available in a comprehensive range of sizes, from 4-way to 54-way configurations, to meet a variety of distribution needs. Its ...



### **Distribution Boards**

Distribution boards, often referred to as electrical panels or breaker boxes, serve as the nerve center of any electrical system. Here we explore the crucial parts of a distribution board and ...



### **PV Combiner Box 2 String Solar Distribution Box with ...**

About this item ?IP65 Waterproof Distribution Box?This PV distribution box is constructed from high-quality ABS and PPC plastic materials, providing ...



## How to Size Main Panel, Load Center, and Consumer Unit?

These boxes serve as a central hub for combining the outputs of multiple solar panel strings before they are connected to an inverter. Below ...



## Steel PV solar powered distribution boxes

We will work with you to ensure you have the best steel PV solar powered distribution boxes specific needs and requirements. Our linear component design and custom-fabricated ...



## Contact Us

---

For catalog requests, pricing, or partnerships, please visit:  
<https://www.bringmethehorizon.eu>