



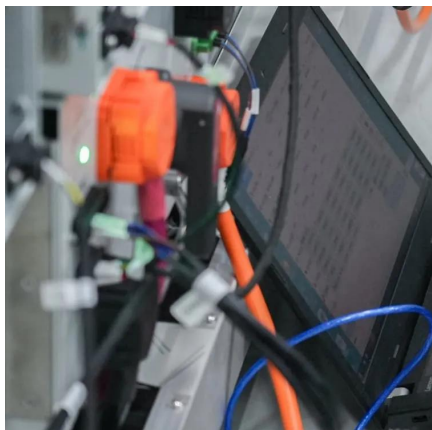
SolarMax Pro Energy Storage Systems

Self-discharge rate of flywheel energy storage system





Self-discharge rate of flywheel energy storage system



[Flywheel Energy Storage , Energy Engineering and ...](#)

The flywheel energy storage system is useful in converting mechanical energy to electric energy and back again with the help of fast ...

Flywheel discharge time Figure 10 presents the flywheel discharge ...

Although a flywheel energy storage system is a promising technology for short period applications, the self-discharge problem impedes them from being applied in keeping energy ...



Flywheel energy storage systems: A critical review on ...

In this article, an overview of the FESS has been discussed concerning its background theory, structure with its associated components, characteristics, applications, ...

[Flywheel energy storage self-discharge](#)

Standby loss has always been a troubling problem for the flywheel energy storage system (FESS), which would lead to a high self-discharge



rate. In this article, hybrid excitation is ...

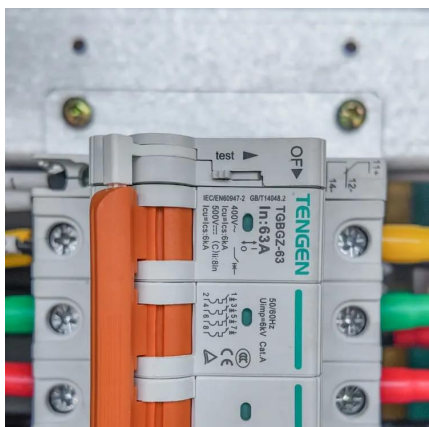


[Development and prospect of flywheel energy storage ...](#)

Some of the solutions to these limitations suggested in literature include the improving the bearing for decreasing the self-discharge rate, reducing the efficiency of low ...

[Flywheel standby discharge rate in 24 h.](#)

Windage loss increases self-discharge, rendering FESS unsuitable for long-term energy storage applications. In the FESS application, the enhancement of heat transfer by the medium within



[Overview of Flywheel Systems for Renewable Energy ...](#)

storage systems (FESS) are summarized, showing the potential of axial-flux permanent-magnet (AFPM) machines in such applications. Design examples of high-speed AFPM machines a e ...



Microsoft Word

A flywheel energy storage system stores kinetic energy in a large rotating mass - the flywheel. Electrical to kinetic energy conversion is performed by a motor/generator coupled to the ...



Design of a Low Self-Discharge Flywheel Storage System

It is now clear that too high feed-in power might lead to U2 reaching out-of-specifications levels, showcasing how centralised energy storage systems alone are not sufficient.

Flywheel Technology

One of the main disadvantages of flywheel energy storage system is the high self-discharge rate which is typically over 20% per hour [7,17]. This disadvantage makes them not suitable for ...



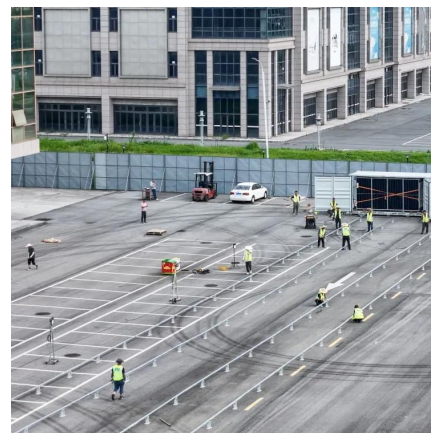
What is the self-discharge rate of flywheel energy storage?

The self-discharge rate of flywheel energy storage systems typically ranges between 1% to 5% per hour. This low rate is significant when compared to traditional batteries, ...



Flywheel standby discharge rate in 24 h.

Windage loss increases self-discharge, rendering FESS unsuitable for long-term energy storage applications. In the FESS application, the enhancement of ...



Flywheel Energy Storage

Cross section of a flywheel module. Courtesy of Stornetic. Rotating mass stores rotational kinetic energy. Power quality, frequency regulation, wind generation stabilization; ...

Critical Review of Flywheel Energy Storage System

This review presents a detailed summary of the latest technologies used in flywheel energy storage systems (FESS). This paper covers the types ...





[Flywheel vs. Supercapacitor as Wayside Energy ...](#)

Energy storage technologies are developing rapidly, and their application in different industrial sectors is increasing considerably. Electric rail ...

[A Review of Flywheel Energy Storage System ...](#)

Additionally, earlier reviews do not include the most recent literature in this fast-moving field. A description of the flywheel structure and its main components ...

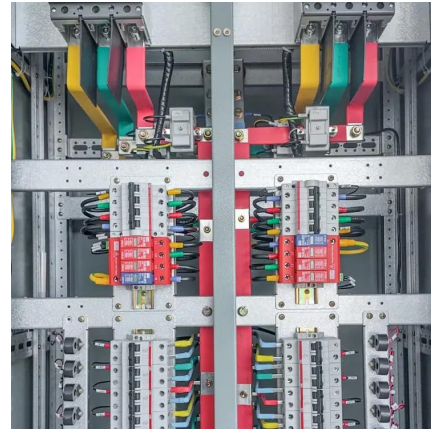


Flywheel energy storage systems: A critical review on ...

Request PDF , Flywheel energy storage systems: A critical review on technologies, applications, and future prospects , Energy storage systems ...

A comprehensive review of stationary energy storage devices for ...

From the electrical storage categories, capacitors, supercapacitors, and superconductive magnetic energy storage devices are identified as appropriate for high power ...



A review of flywheel energy storage systems: state of the art and

The existing energy storage systems use various technologies, including hydroelectricity, batteries, supercapacitors, thermal storage, energy storage flywheels, [2] and ...



Flywheel energy storage systems: A critical review on ...

In this article, an overview of the FESS has been discussed concerning its background theory, structure with its associated components, ...



Experimental Techniques for Flywheel Energy Storage System Self

In this paper, an experimental characterisation technique for Flywheel Energy Storage Systems (FESS) behaviour in self-discharge phase is presented. The self-discharge ...





Experimental Techniques for Flywheel Energy Storage System ...

In this paper, an experimental characterisation technique for Flywheel Energy Storage Systems (FESS) behaviour in self-discharge phase is presented. The self-discharge ...



Hydrogen as a key technology for long-term & seasonal energy storage

Hydrogen storage systems based on the P2G2P cycle differ from systems based on other chemical sources with a relatively low efficiency of 50-70%, but this fact is fully ...

A review of flywheel energy storage systems: state of the art ...

FESSs are still competitive for applications that need frequent charge/discharge at a large number of cycles. Flywheels also have the least environmental impact amongst the ...



Contact Us

For catalog requests, pricing, or partnerships, please visit:
<https://www.bringmethehorizon.eu>