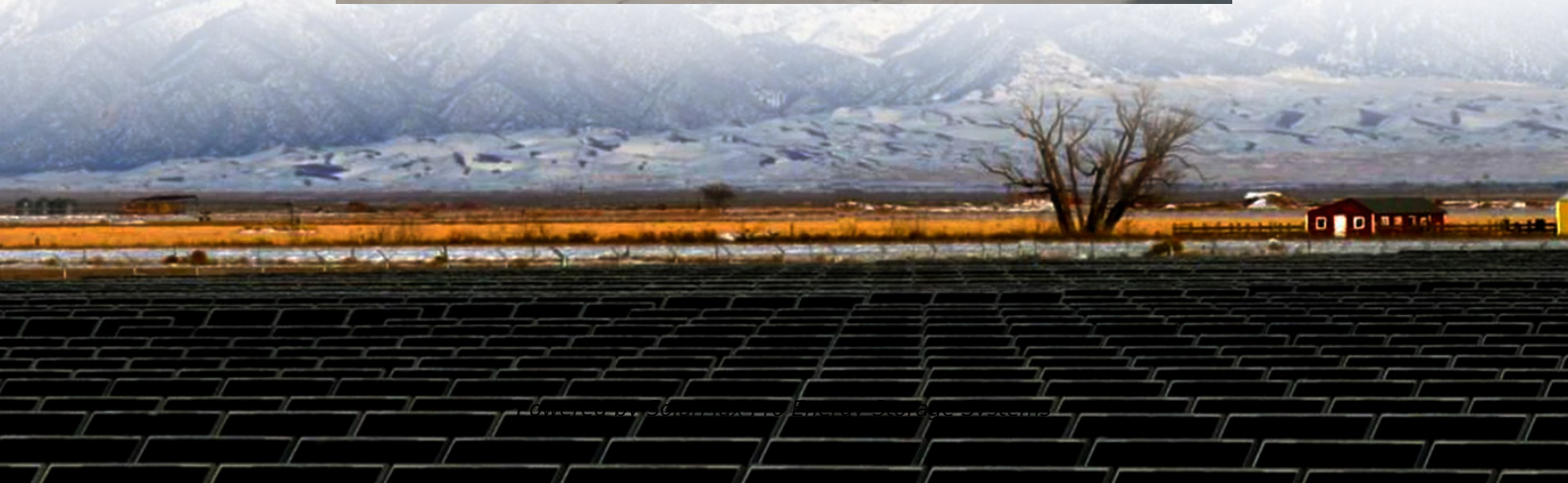




SolarMax Pro Energy Storage Systems

Resonant communication base station wind and solar complementarity





Overview

What is the complementary coefficient between wind power stations and photovoltaic stations?

Utilizing the clustering outcomes, we computed the complementary coefficient R between the wind speed of wind power stations and the radiation of photovoltaic stations, resulting in the following complementary coefficient matrix (Fig. 17.).

How to measure complementarity between wind speed and radiation?

The Kendall CC, Spearman CC, and fluctuation coefficient are combined to construct a comprehensive measure of the complementarity between wind speed and radiation, which provides a reliable tool for quantitatively evaluating the complementary characteristics of wind and solar energy. 2. A copula-based wind-solar complementarity coefficient R .

Which cluster of wind power stations exhibit the weakest complementarity with radiation?

Analysis of the matrix reveals that the 4th, 5th, 7th, and 8th clusters of wind power stations exhibit the weakest complementarity with the radiation of photovoltaic stations. In contrast, the 5th, 7th, 8th, and 10th clusters of photovoltaic stations similarly demonstrate poor complementarity with the wind speed of wind power stations.

Is there a complementarity evaluation method for wind power?

However, less attention has been paid to quantify the level of complementarity of wind power, photovoltaic and hydropower. Therefore, this paper proposes a complementarity evaluation method for wind power, photovoltaic and hydropower by thoroughly examining the fluctuation of the independent and combined power generation.

Is there a mutual complementarity between wind and solar energy?



Moreover, in 2018, Zhang et al. proposed a model to estimate the spatial and temporal complementarities of wind-solar energy. It adopted the ramp rate to evaluate the variability concisely, and used the synergy coefficient to express the mutual complementarity between wind and solar energy.

Does wind-solar complementarity occur in low-elevation plains?

Stronger wind-solar complementarity occurs in low-elevation plains. Studying the complementarity between wind and solar energy is crucial for optimizing the use of these renewable resources.



Resonant communication base station wind and solar complementa



Optimal Scheduling of 5G Base Station Energy Storage ...

This research is devoted to the development of software to increase the efficiency of autonomous wind-generating substations using panel structures, which will allow the use of ...

Wind-solar complementary street lights - BSW Led

Wind-solar hybrid Solar Street Light system can be applied to road lighting, landscape lighting, traffic monitoring, communication base stations, school science popularization, large-scale ...



Optimal Scheduling of 5G Base Station Energy Storage Considering Wind

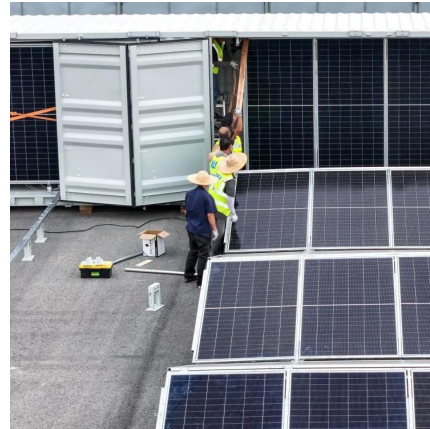
This research is devoted to the development of software to increase the efficiency of autonomous wind-generating substations using panel structures, which will allow the use of ...

How to make wind solar hybrid systems for telecom stations?

At present, wind and solar hybrid power supply systems require higher requirements for base



station power. To implement new energy development, our team will continue to conduct ...



Overview of hydro-wind-solar power complementation ...

To address climate change, China is positively adjusting the configuration of energy generation and consumption as well as developing renewable energy sources in a has made ...



Quantitative evaluation method for the complementarity of wind-solar

Complementarity between wind power, photovoltaic, and hydropower is of great importance for the optimal planning and operation of a combined power system. However, less ...



Huatong Yuanhang's wind-solar complementary system for ...

Based on the complementarity of wind energy and solar energy, the base station wind-solar complementary power supply system has the advantages of stable power supply, ...





A copula-based wind-solar complementarity coefficient: Case

...

A measure of wind-solar complementarity coefficient R is proposed in this paper. Utilizes the copula function to settle the Spearman and Kendall correlation coefficients ...



Optimal Scheduling of 5G Base Station Energy Storage Considering Wind

Download Citation , On Mar 25, 2022, Yangfan Peng and others published Optimal Scheduling of 5G Base Station Energy Storage Considering Wind and Solar Complementation , Find, read ...

Communication base station based on wind-solar complementation

technical field [0001] The invention relates to the technical field of new energy communication, in particular to a communication base station based on wind and solar complementarity.



A wind-solar complementary communication base station power

...

The invention discloses a wind-solar complementary communication base station power supply system which comprises a base, a base station tower, a solar power generation device, a wind ...



Application of wind solar complementary power generation ...

To solve the problem of long-term stable and reliable power supply, we can only rely on local natural resources. As inexhaustible renewable resources, solar energy and wind ...



[How to make wind solar hybrid systems for telecom ...](#)

Energy applications need to complete the urban base station power supply. At present, wind and solar hybrid power supply systems require higher ...

Quantitative evaluation method for the complementarity of ...

Complementarity between wind power, photovoltaic, and hydropower is of great importance for the optimal planning and operation of a combined power system. However, less ...





Optimal Scheduling of 5G Base Station Energy Storage Considering Wind

This article aims to reduce the electricity cost of 5G base stations, and optimizes the energy storage of 5G base stations connected to wind turbines and photov

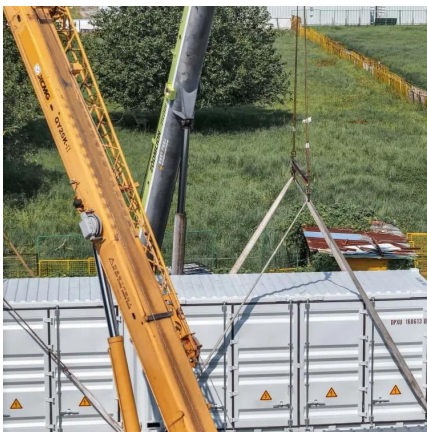
CN106050571A

The comprehensive energy supply system is composed of a wind energy conversion system, a solar photovoltaic system, a miniature compressed air energy storage system, a refrigerating ...



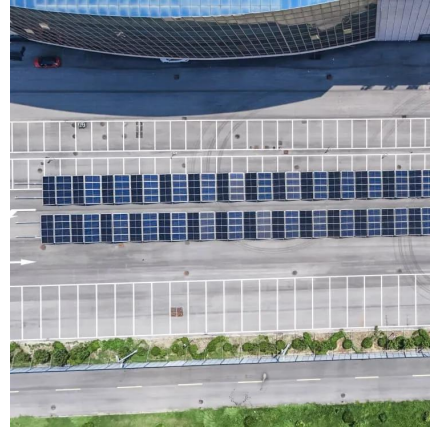
Investigating the Complementarity Characteristics of Wind and Solar

The hourly load demand can be effectively met by the LM-complementarity between wind and solar power. The optimal LM-complementarity scenario effectively eliminates the anti ...



Optimal Scheduling of 5G Base Station Energy Storage ...

This article aims to reduce the electricity cost of 5G base stations, and optimizes the energy storage of 5G base stations connected to wind turbines and photov



Multi-timescale scheduling optimization of cascade hydro-solar

Science and Technology for Energy Transition 80, 17 (2025) Regular Article Multi-timescale scheduling optimization of cascade hydro-solar complementary power stations ...



Optimal Scheduling of 5G Base Station Energy Storage Considering Wind

This article aims to reduce the electricity cost of 5G base stations, and optimizes the energy storage of 5G base stations connected to wind turbines and photovoltaics. Firstly, established ...



Telecom Base Station PV Power Generation System Solution

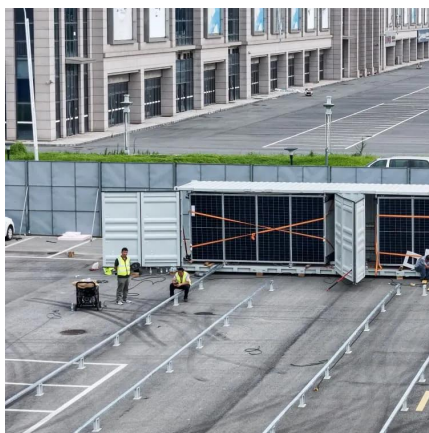
The communication base station installs solar panels outdoors, and adds MPPT solar controllers and other equipment in the computer room. The power generated by solar energy is used by ...





CN109372703B

The invention relates to the technical field of new energy communication, and discloses a communication base station based on wind-solar hybrid, which comprises a base, wherein a ...



CN106050571A

In order to solve the problem in combined cooling and power of communication base stations in remote and border areas such as remote pasturing areas, mountainous areas, countries or ...

Design of Off-Grid Wind-Solar Complementary Power Generation ...

This paper describes the design of an off-grid wind-solar complementary power generation system of a 1500m high mountain weather station in Yunhe County, Lishui City.



[A wind-solar complementary communication base ...](#)

The invention discloses a wind-solar complementary communication base station power supply system which comprises a base, a base station tower, a solar ...



Contact Us

For catalog requests, pricing, or partnerships, please visit:
<https://www.bringmethehorizon.eu>