



SolarMax Pro Energy Storage Systems

Power generation at the power station





Overview

What is a power station?

A power station, also referred to as a power plant and sometimes generating station or generating plant, is an industrial facility for the generation of electric power. Power stations are generally connected to an electrical grid.

How does a power generation system work?

The turbine rotates the generator and creates electricity. The generated electricity in the power station is then sent to the power grid for use in our homes and industries. A power generation system is a group of process and equipment that work together in an industrial facility named a power station to create electricity.

How does a power station work?

Many power stations contain one or more generators, a rotating machine that converts mechanical power into three-phase electric power (these are also known as an alternator). The relative motion between a magnetic field and an electrical conductor creates an electric current.

Why is a power generating station important?

Power plants are usually located in suburban areas or far from cities due to their need for large amounts of land and water, as well as requirements for waste disposal. For this reason, a power generating station has to not only concern itself with the efficient generation of power, but also in the transmission of this power.

How many megawatts can a power plant generate?

The coal-fired Ratcliffe-on-Soar Power Station in the UK has a rated capacity of 2 gigawatts. The Aswan Dam hydro-electric plant in Egypt has a capacity of 2.1 gigawatts. The Three Gorges Dam hydro-electric plant in China has a capacity of 22.5 gigawatts. Gas turbine power plants can generate tens to



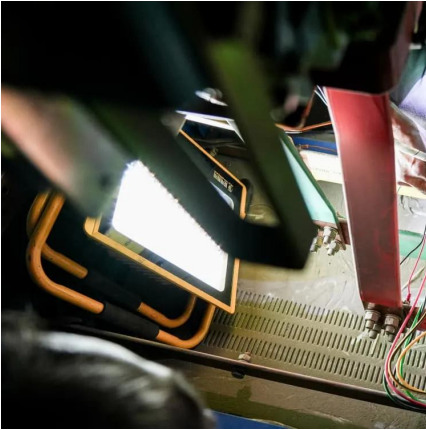
hundreds of megawatts. Some examples:.

What is a power plant & how does it work?

Hospitals, office buildings, industrial plants, and other critical facilities also use them to provide backup power in case of a power outage. These are usually fuelled by diesel oil, heavy oil, natural gas, and landfill gas. Power plants that can be dispatched (scheduled) to provide energy to a system include:



Power generation at the power station



[How Does A Power Plant Work? , Allied Power Group](#)

Turbine-driven generators are crucial components in power generation. Power plants can operate on different fuel sources, such as natural gas, coal, oil, or ...

Lakeland Electric to test new liquid nitrogen power generation ...

Lakeland Electric will be the first utility to test a new liquid nitrogen power generation system. The 5-megawatt pilot plant will be built and operated by American ...



Introduction to Power Plants , Classification Of Power ...

A power plant is assembly of systems or subsystems to generate electricity, i.e., power with economy and requirements. The power plant itself must be useful ...

[Electricity explained How electricity is generated](#)

Most U.S. and world electricity generation is from electric power plants that use a turbine to drive



electricity generators. In a turbine generator, a moving fluid--water, steam, ...



[List of power stations in New Jersey](#)

This is a list of electricity-generating power stations in the U.S. state of New Jersey, sorted by type and name. In 2023, New Jersey had a total summer capacity of 16,838 MW through all of its ...

[Power Plant Basics: Types, Components, and How They Work](#)

In its simplest form, a Power Plant, known also as a Power Station, is an industrial facility used to generate electricity. To generate power, an electrical power plant needs to have ...



Electricity in the U.S.

Coal was the fourth-highest energy source--about 16%--of U.S. electricity generation in 2023. Nearly all coal-fired power plants use steam turbines. One power plant ...



[How do power plants work? , How do we make electricity?](#)

Phase: Large electric power generators produce 3-phase electric power. Very simply put this means there are three different circuits each generating power at the same voltage and ...



[How Large Electric Power Generators Work: The Basics](#)

Phase: Large electric power generators produce 3-phase electric power. Very simply put this means there are three different circuits each generating power at the same voltage and ...

[Power Plant: What Are They? \(& the Types of Power Plants\)](#)

Many power stations contain one or more generators, a rotating machine that converts mechanical power into three-phase electric power (these are also known as an ...



[How Steam Power Plants Work: An Informative Guide](#)

Discover how steam power plants convert heat energy into mechanical work and electricity. Explore their components, efficiency, and applications.



List of power stations in India

The total installed power generation capacity in India as on 30th June 2025 is 484818.82 MW, with sector wise and type wise break up as given below. [1] ...



Power station

Most power stations in the world burn fossil fuels such as coal, oil, and natural gas to generate electricity. Low-carbon power sources include nuclear power, and use of renewables such as ...

[Understanding Electricity Generation in Power Plants](#)

Power plants serve as the linchpins of electricity generation systems. These facilities convert various forms of energy into electrical energy using distinct ...



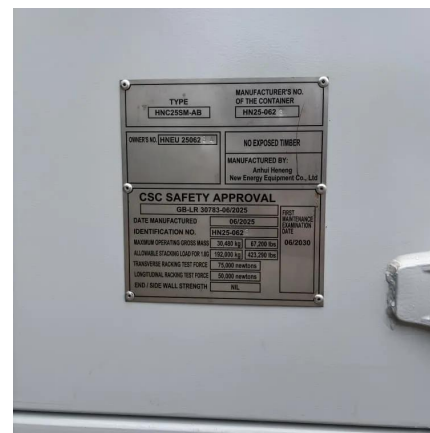


List of power stations in Michigan

This is a list of electricity-generating power stations in Michigan, sorted by type and name. In 2023, Michigan had a total summer capacity of 31,120 MW through all of its power plants, and ...

Capital Cost and Performance Characteristics for Utility ...

Contacts This report, Capital Cost and Performance Characteristics for Utility-Scale Electric Power Generating Technologies, was prepared under the general guidance of Angelina ...



Facts about Power Generator Stations

Electricity is produced by power generating stations. The electricity that is produced is transmitted by power lines to the power grid for use by homes, ...

How Does A Power Plant Work? , Allied Power Group

Turbine-driven generators are crucial components in power generation. Power plants can operate on different fuel sources, such as natural gas, coal, oil, or nuclear fuel. Steam is used to drive ...



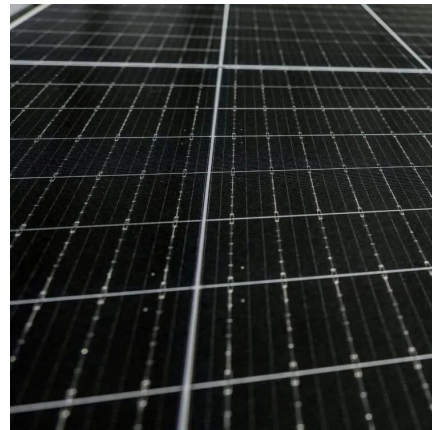
[Power Plant: What Are They? \(& the Types of Power ...](#)

Many power stations contain one or more generators, a rotating machine that converts mechanical power into three-phase electric power ...



The Incredible Science Behind How Power Plants Generate ...

In this comprehensive article, we'll take a closer look at the different types of power plants, the core components and systems involved, the latest data on efficiency and ...



[Power Plant Basics: Types, Components, and How ...](#)

In its simplest form, a Power Plant, known also as a Power Station, is an industrial facility used to generate electricity. To generate power, an ...





Understanding Electricity Generation in Power Plants

Power plants serve as the linchpins of electricity generation systems. These facilities convert various forms of energy into electrical energy using distinct technologies based on the source

...



Power Station

A power station (also called a generating station, powerhouse, generating plant, or power plant) refers to industrial equipment for electric power generation. The classification of ...

POWER PLANT ENGINEERING (R17A0326)

A power plant or a power generating station, is basically an industrial location that is utilized for the generation and distribution of electric power in mass scale, usually in the order of several ...



Contact Us

For catalog requests, pricing, or partnerships, please visit:
<https://www.bringmethehorizon.eu>