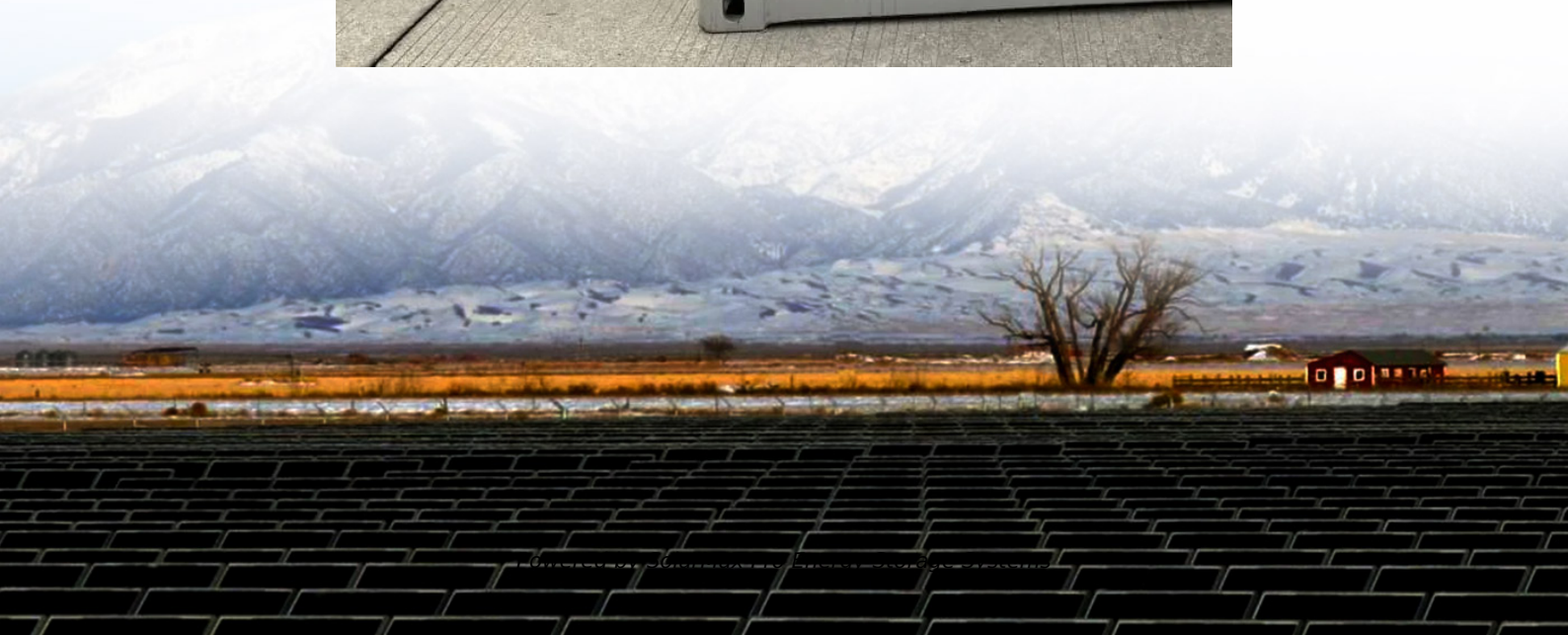




**SolarMax Pro Energy Storage Systems**

# **Photovoltaic power station energy storage components**





## Overview

---

The batteries are used to store electrical energy generated by the solar power plants. The storage components are the most important component in a power plant to meet the demand and variation of the load.

The solar power plant is also known as the Photovoltaic (PV) power plant. It is a large-scale PV plant designed to produce bulk electrical power from solar radiation. The solar power plant uses solar energy to produce electrical power. Therefore, it is a conventional power.

The major components of the solar photovoltaic system are listed below. 1. Photovoltaic (PV) panel 2. Inverter 3. Energy storage devices 4. Charge controller 5. System.

The solar power plant is classified into two types according to the way load is connected. 1. Standalone system 2. Grid-connected system .

A solar cell is nothing but a PN junction. The plot of short-circuit current (ISC) and open-circuit voltage (VOC) describes the performance of the solar cell. This plot is shown in the figure.

The batteries are used to store electrical energy generated by the solar power plants. The storage components are the most important component in a power plant to meet the demand and variation of the load. This component is used especially when the sunshine is not available for few days.



## Photovoltaic power station energy storage components

---

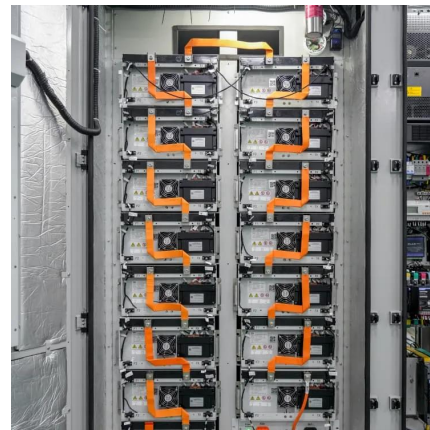


### [Solar Installed System Cost Analysis](#)

Solar Installed System Cost Analysis NREL analyzes the total costs associated with installing photovoltaic (PV) systems for residential rooftop, commercial rooftop, and utility-scale ...

### [Structure diagram of solar photovoltaic power station](#)

This video shows the components of a Solar Solar Photovoltaic (PV) Utility Scale Power Plant that includes Solar Array, Mounting Systems, Wirings / Cablings,



### [What are the main components of a solar power system?](#)

The creation of a solar power system requires a thorough understanding of its components: solar panels, inverters, batteries, charge controllers, and mounting systems.

### [Solar Integration: Solar Energy and Storage Basics](#)

But the storage technologies most frequently coupled with solar power plants are



electrochemical storage (batteries) with PV plants and thermal storage (fluids) with CSP plants.



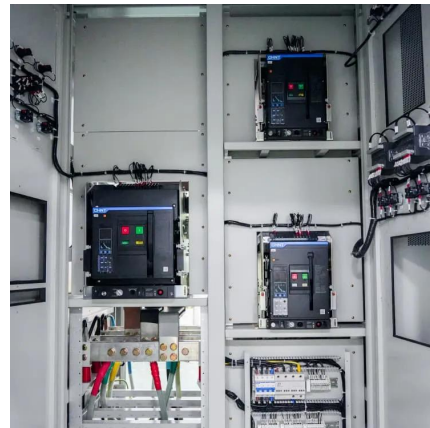
### What are the key components of a solar power plant?

Some solar power plants incorporate energy storage systems, such as batteries, to store excess energy during sunny periods for use during cloudy days or at night. Energy ...



### What are the main components of a solar power system?

Solar Batteries solar batteries are an optional component in a solar power system, used to store energy generated during the day for use at night or during grid outages. A battery bank can ...



### **Simulation test of 50 MW grid-connected "Photovoltaic+Energy storage"**

The simulation test also reveals the important role of energy storage unit in power grid demand peaking and valley filling, which has an important impact on balancing the ...







## A Comprehensive Guide to Solar Battery Energy Storage Systems

Explore everything you need to know about solar battery energy storage, including its benefits, components, types, installation considerations, and future trends.



## What is Solar Power Plant? Definition, Components, Working, ...

A solar power plant is a facility that converts sunlight into electricity using photovoltaic (PV) technology or concentrated solar power (CSP). These plants are a clean and ...

## Solar Power Plant - Types, Components, Layout and Operation

The batteries are used to store electrical energy generated by the solar power plants. The storage components are the most important component in a power plant to meet the demand and ...



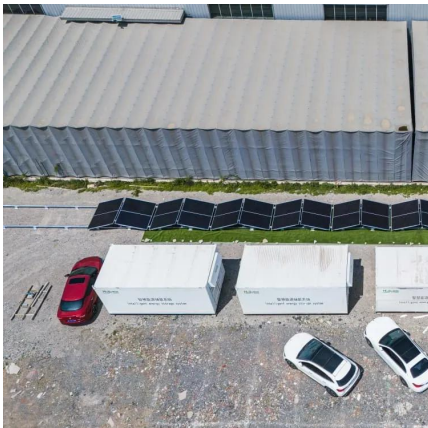
## [Circuit Diagram of a PV System with Storage: ...](#)

Understanding the circuit diagram of a PV system with storage is crucial for homeowners looking to make the leap, as it provides the blueprint ...



## Key Components of a Solar Power Plant: A Detailed Breakdown

The main parts of a solar power plant are solar panels, inverters, and deep cycle batteries. It also includes a racking system, electrical disconnects, and a battery charge ...

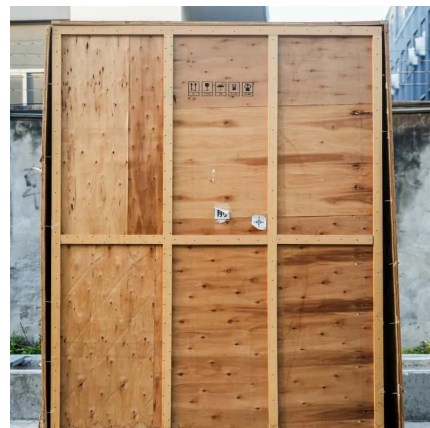


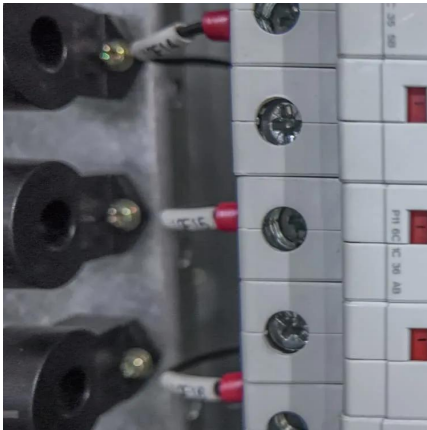
## What does a photovoltaic energy storage power ...

Photovoltaic energy storage systems fundamentally depend on solar cells, which are the primary components that convert sunlight into ...

## What are the key components of a solar power plant?

Some solar power plants incorporate energy storage systems, such as batteries, to store excess energy during sunny periods for use during ...





### UNIT III

Solar Radiation, Radiation Measurement, Solar Thermal Power Plant, Central Receiver Power Plants, Solar Ponds - Thermal Energy storage system with PCM- Solar Photovoltaic systems: ...

#### Solar Integration: Solar Energy and Storage Basics

But the storage technologies most frequently coupled with solar power plants are electrochemical storage (batteries) with PV plants and thermal storage (fluids) ...



#### A Guide to Battery Energy Storage System Components

A battery energy storage system (BESS) contains several critical components. This guide will explain what each of those components does.

### **Circuit Diagram of a PV System with Storage: Professional**

Understanding the circuit diagram of a PV system with storage is crucial for homeowners looking to make the leap, as it provides the blueprint for effective energy capture, ...



## What does a photovoltaic energy storage power station rely on to ...

Photovoltaic energy storage systems fundamentally depend on solar cells, which are the primary components that convert sunlight into electricity. These cells leverage the ...



## Key Components of a Solar Power Plant: A Detailed ...

The main parts of a solar power plant are solar panels, inverters, and deep cycle batteries. It also includes a racking system, electrical ...



## What are the components of a solar energy storage system?

Installing a solar array with battery backup requires some different components than traditional systems. Here is a quick rundown of the components involved in grid-tied PV ...







### [What are the components of a solar energy storage ...](#)

Installing a solar array with battery backup requires some different components than traditional systems. Here is a quick rundown of the ...

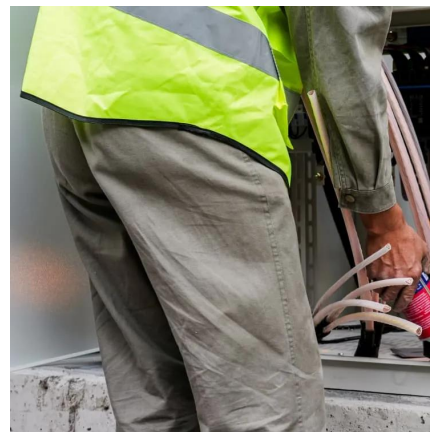


### [Solar Photovoltaic \(PV\) System Components](#)

A stand-alone system with energy storage (a battery) will have more components than a PV-direct system. This fact sheet will present the different solar PV system components and describe ...

### **Solar Electric System Design, Operation and Installation**

California Energy Commission, Sacramento, CA, Download A Guide to Photovoltaic (PV) System Design and Installation, prepared by Endecon Engineering, with ...



### [Best 8 Solar Power Plant Design: A Comprehensive ...](#)

This guide covers the essentials of solar power plant design, from site selection to system layout, helping you create efficient and solar installation.



## Contact Us

---

For catalog requests, pricing, or partnerships, please visit:  
<https://www.bringmethehorizon.eu>