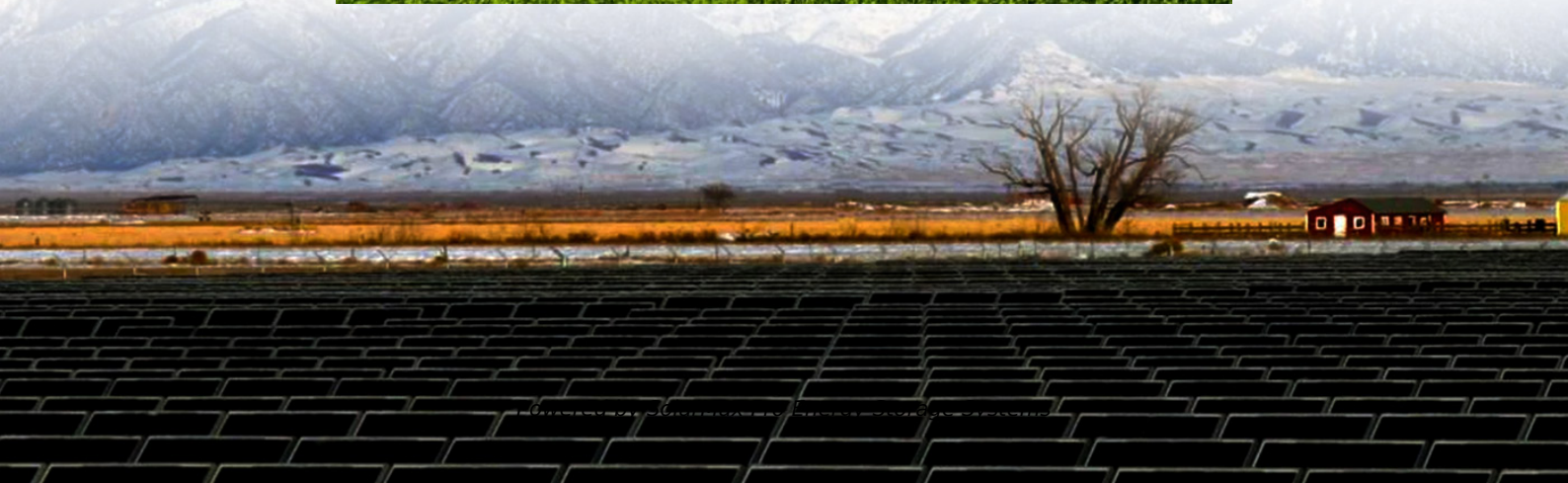




SolarMax Pro Energy Storage Systems

Lost communication with the battery management module BMS





Overview

For the BMS to communicate correctly with the inverter the battery must be set to the correct Modbus protocol. This can be done on the battery settings page. The inverter manuals have a list of compatible batteries detailing their Modbus protocol and whether they use CAN or RS485 communications. How do I troubleshoot a battery management system (BMS) problem?

Troubleshooting Steps for BMS Problems When it comes to troubleshooting common Battery Management System (BMS) issues, there are a few key steps you can take to identify and resolve the problem. First, start by checking the connections and wiring of your BMS. Loose or faulty connections can often cause communication errors or power disruptions.

Why do battery management systems need troubleshooting?

A Battery Management System (BMS) is a crucial component in ensuring the optimal performance and longevity of battery packs. However, like any complex system, BMS can encounter issues that require troubleshooting. Let's take a look at some common problems and their potential causes. One issue that often arises is cell imbalance.

Why do you need a battery management system (BMS)?

Remember that addressing BMS issues promptly not only extends battery life but also ensures safe operation for various applications such as electric vehicles, renewable energy systems, and portable devices.

Should I Reset my BMS after a battery replacement?

On every battery replacement, resetting the BMS is recommended as it will clear the snapshots made by the old battery, set up the parameters on default and start learning procedure again. Resetting solved my problem, at least.

How does a battery management system work?

When cared for properly, the BMS operates seamlessly in the background to



keep the battery safe and performing at its peak. As batteries continue to power more and more aspects of both personal and industrial technology, the role of intelligent Battery Management Systems will only increase in importance.

Does the battery communications module support network communication?

The Battery Communications Module supports network communication with other devices in the environment. This capability can present risks if it's not configured securely. Following are Eaton recommended best practices to help secure the network.



Lost communication with the battery management module BMS

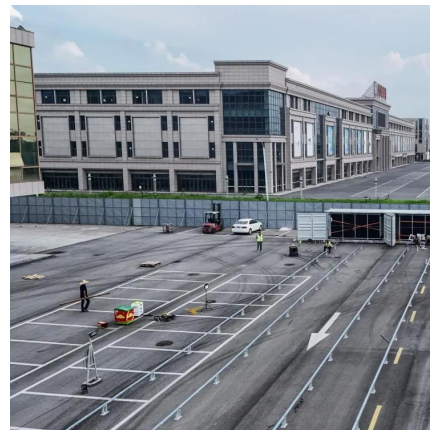


Common BMS Problems And BMS Troubleshooting

As battery technology continues to evolve, so do the complexities associated with BMS. In this blog, we will embark on common BMS problems that users encounter and ...

How to Troubleshoot A Bluetooth Lithium Battery If It Lost

Why can't my Bluetooth battery establish a communication connection with the DC Home APP? If you're into tech, dealing with a Smart lithium battery that lost communication can be a real ...



BMS error - No Cell Communication

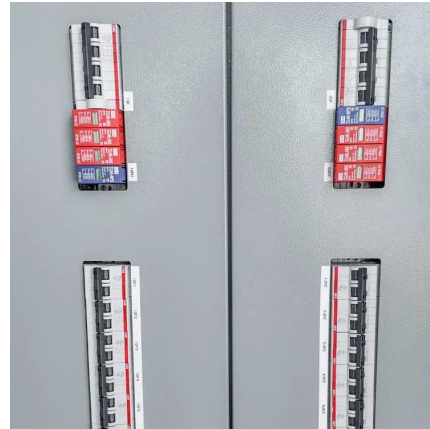
This communication can be done via Cell Modules (circuit boards on the battery cells), a Tesla PCB module or Centralized Can Group modules to which up to 16 cell measurements can be ...

Battery Management System Malfunction

{Alarm} Due to a malfunction of the Battery Management System, driving is currently not



possible. Please call a workshop or your customer care centre for towing. The car ...



Pylontech BMS Connection Lost

On the latest firmware (3.51), Cerbo GX loses communication with Pylontech's BMS - after a few minutes of operation. After returning to (backup) firmware 3.42, communication ...



How to solve Inverter & battery Communication issues

If you are unable to view battery information on the APP or display screen after connecting the inverter with the battery (as shown in the photo Below), It is very likely due to a ...



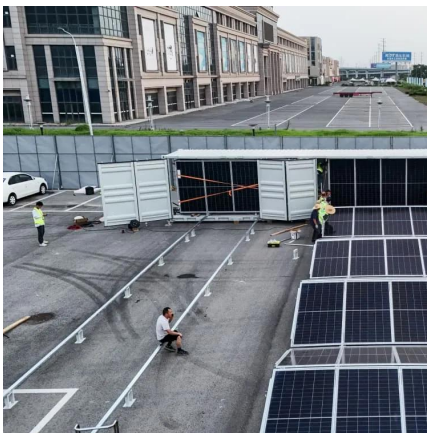
11 Seplos BMS Software Problems You Might Face ...

However, users often encounter software-related problems during setup or daily use. This article outlines 11 common BMS software issues and practical ...



EV Hardware Architecture And Working Of Battery ...

What is a Battery Management System (BMS)?
BMS is an electronic control circuit that monitors and regulates the charging and discharge of the battery of ...



Eaton Battery Communications Module Installation and ...

This section describes how to use the Eaton Battery Communicator interface to connect to the Battery Communications Module and use the communicator's features with the module.

Battery Management System BMS for Lithium-Ion ...

For electric vehicles, including electric cars, motorcycles, trucks, and boats, and modern solar energy systems, the safe and efficient operation ...



Question regarding Battery Management System "reset" and ...

It's worth checking that the battery terminals for the large battery are securely connected, that the negative cable from the battery is still secure at the bodywork end, and if ...



Communication Protocols in BMS

A crucial component of a Battery Management System (BMS) that guarantees timely and effective communication with other systems or components in a specific application is the ...



What Is a BMS in Batteries? Definition, Functions, and ...

A Battery Management System (BMS) is the intelligent controller that ensures batteries are used safely, efficiently, and reliably. Whether you're ...

Battery Management System fault

On every battery replacement, resetting the BMS is recommended as it will clear the snapshots made by the old battery, set up the parameters on default and start learning ...





11 Seplos BMS Software Problems You Might Face And How to ...

However, users often encounter software-related problems during setup or daily use. This article outlines 11 common BMS software issues and practical solutions, helping you troubleshoot ...

[Battery Management System \(BMS\) Architecture: A ...](#)

The Battery Management System (BMS) is a crucial component in ensuring the safe and efficient operation of lithium-ion battery packs in electric ...



Troubleshooting Common BMS Issues

When it comes to troubleshooting common Battery Management System (BMS) issues, there are a few key steps you can take to identify and resolve the problem. First, start by checking the ...

How to solve Inverter & battery Communication issues ...

If you are unable to view battery information on the APP or display screen after connecting the inverter with the battery (as shown in the photo ...



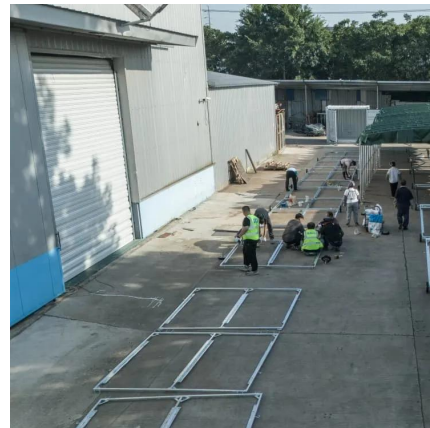
CAN Bus: Battery Management and Communications ...

Some examples of systems that use CAN Bus protocols in a vehicle include: 1. Battery Management System (BMS): The battery pack of electric vehicles is ...



Lithionics Dual Channel Battery Management System

The Dual Channel Advanced Battery Management Systems (BMS) is designed to deliver unparalleled reliability and efficiency for RV, marine, and off-grid power solutions. With robust ...



What Is BMS in an Electric Vehicle (EV)?

A battery management system (BMS) monitors the state of a battery and eliminates variations in performance of individual battery cells to allow them to work uniformly. ...





13 Communication Interface for BMS

13 Communication Interface for BMS BMS performs internal communication between its master and slave modules and external communication with other system devices like the charge - ...



Contact Us

For catalog requests, pricing, or partnerships, please visit:
<https://www.bringmethehorizon.eu>