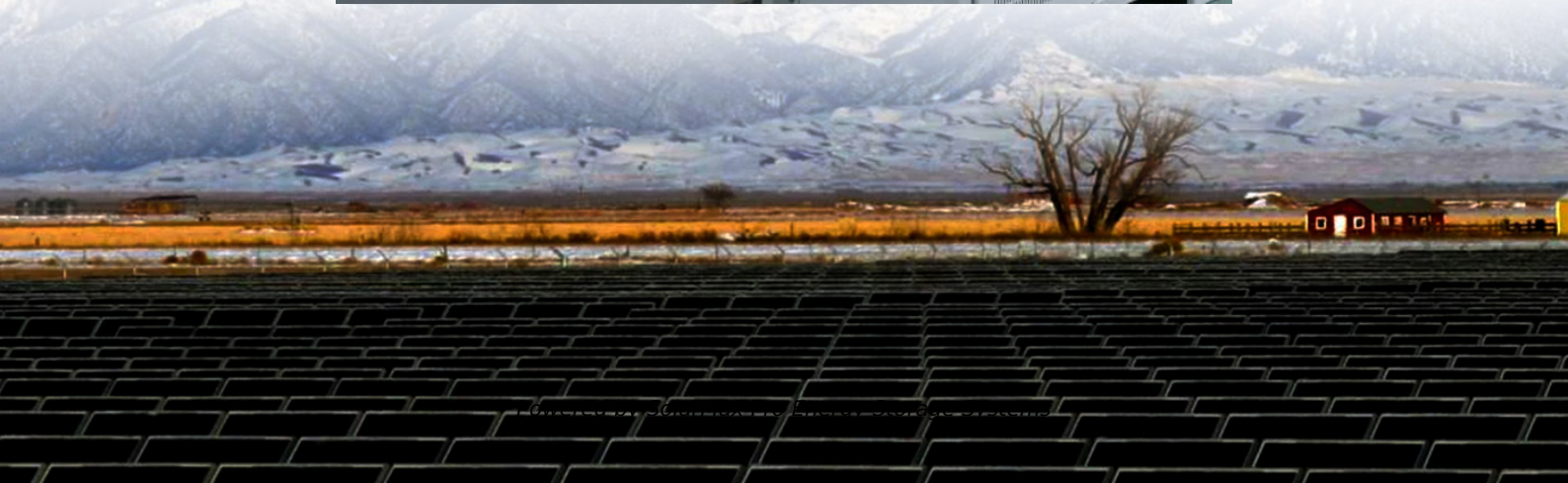




**SolarMax Pro Energy Storage Systems**

# **Lithium iron phosphate battery station cabinet parameter settings**





## Overview

---

What is a lithium iron phosphate (LFP) battery?

Lithium Iron Phosphate (LiFePO<sub>4</sub> or LFP) batteries are a type of lithium battery that have become the most commonly used lithium battery in the offgrid solar market. One of the reasons for this is that LFP batteries have better thermal and chemical stability than other lithium-ion chemistries.

How do I configure a BMS for a LiFePO<sub>4</sub> battery?

Here are some general guidelines for configuring a BMS for a LiFePO<sub>4</sub> battery:  
Charge voltage: The charge voltage for a LiFePO<sub>4</sub> battery should typically be set to around 3.6 volts per cell. This will ensure that the battery is charged to its full capacity while minimizing the risk of overcharging, which can damage the battery.

How to choose a lithium battery for solar power?

Adjust the settings similar to the ones given here. If you are a seasoned solar power user, you might want to tinker with the settings to get the results you want. Even at the default however, lithium batteries will outperform lead acid, AGM and gel. Lithium batteries charge faster and have a longer depth discharge rate.

What is a lithium battery management system (BMS)?

Lithium batteries include a Battery Management System (BMS) that can implement an internal battery disconnect in the event of an internal fault, high or low temperatures, high or low battery voltages, or other conditions. If there is a low voltage cutout then it is recommended to increase the LVD setting.

How do I adjust a LiFePO<sub>4</sub> charge controller?

Your charge controller probably has default settings, or suggestions in the instructions. You can use those or you can try the following which is optimized for most LiFePO<sub>4</sub> batteries including the Ampere Time LiFePO<sub>4</sub> 200ah. Go to



the settings in your charge controller. Adjust the parameters so it looks like the following.

Does Morningstar support lithium battery charging?

Additionally, Morningstar has engineered special features into select controllers to better support lithium battery charging (e.g. low temperature foldback charging, interactive meters that enable quick and easy charge setting adjustments, alert notifications, and remote monitoring capabilities).



## Lithium iron phosphate battery station cabinet parameter settings

---



### [SMI-48100A1F6 LFP Battery System Specification](#)

2) UN38.3 Li-Ion Battery Transportation Safety Testing Requirement 3)GB/T 4208-2008 Enclosure Protection Class 4)YD/T 1051-2018 General technical requirements for power ...

### [LITHIUM IRON PHOSPHATE BATTERY NPFC Series](#)

4 (lithium iron phosphate) battery products, the system uses the advanced LiFePO<sub>4</sub> battery technology with the benefit of long cycle life, small size, light weight, safety and environmental ...



### **LiFePO<sub>4</sub> Battery User Manual**

To avoid battery leakage, abnormal heat levels, fire, performance degradation, or explosion or other accidents, please follow the specifications and use the battery properly.

### [LITHIUM IRON PHOSPHATE BATTERY NPFC Series](#)

The "Battery parameter settings" Subdirectory  
Non-manufacturers cannot enter 10 NPFC series



## LiFePO4 Battery System for Telecommunication Operation manual V1.0 The "Version ...

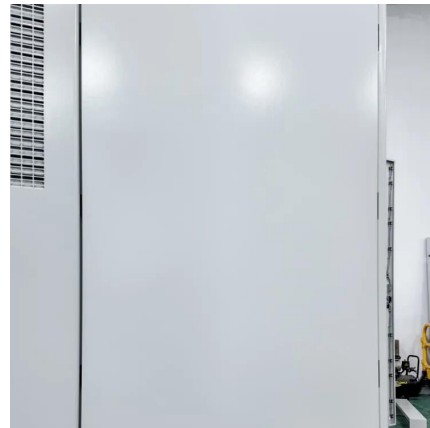


### Settings for the MPPT for lithium LIFEPO4

The right settings are whatever your battery manufacturer has determined to be the 'right settings'. I mean there are typical settings, yes, and these can be used in the ...

### Ultimate Guide to Charging a LiFePO4 Battery

Charging a LiFePO4 battery correctly is key to longevity. Learn how to use a LiFePO4 battery charger, charge in parallel or series, and avoid ...



### INSTALLATION, OPERATIONS and MAINTENANCE ...

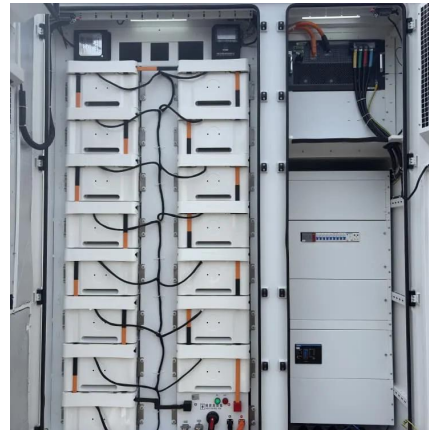
Connect the '-' negative of the battery output cable with the negative busbar of the power plant, and then connect the "+" positive of the battery output cable with the positive copper bar of ...





## The Best Solar Charge Controller Settings For LiFePO4 Batteries

If you're serious about using solar power efficiently, understanding battery storage is essential. Choosing the right battery, sizing it correctly, and knowing how to maintain it can make the ...



## [Lithium Battery Settings QUICK REFERENCE GUIDE](#)

Using the Magnum Energy ME-RC-L or ME-MR-L Remote Controls, set Magnum Energy Access LFP battery settings inverter/chargers to charge lithium iron phosphate (LFP) batteries. via ...

## [12V 400Ah bulk and absorption charge parameter settings](#)

Properly setting the charging parameters for a 12V 400Ah LiFePO4 battery is crucial to optimize battery life and performance. Here's a detailed breakdown of the settings for ...



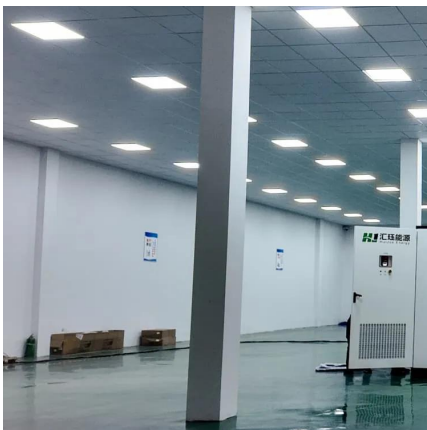
## Charging LiFePO4 vs. Other Lithium Batteries: Key Differences ...

However, not all lithium batteries are created equal, especially when it comes to charging methods and safety. This article will delve into the key differences between charging ...



## Parameter Settings for LiFePO4 Battery Inverter/Controller

Setting parameters for a lithium iron phosphate (LiFePO4) battery inverter/controller involves configuring several key aspects to ensure optimal performance and safety.



## BMS settings for LiFePO4

The best settings for a battery management system (BMS) for a lithium iron phosphate (LiFePO4) battery will depend on the specific characteristics of the battery and the ...

## [\[Full Guide\] How to Charge LiFePO4 Batteries](#)

Charging LiFePO4 lithium battery properly is crucial to prolong the battery's lifespan. But how to properly charging the battery? Read to know the 3 best ways to charge.





## Are Lithium Iron Phosphate (LiFePO<sub>4</sub>) Batteries Safe? A ...

LiFePO<sub>4</sub> batteries, also known as lithium iron phosphate batteries, are rechargeable batteries that use a cathode made of lithium iron phosphate and a lithium cobalt ...

### [DIY LiFePO<sub>4</sub> Home Battery Backup Guide](#)

Components of a DIY Energy Storage System 1. LiFePO<sub>4</sub> Batteries LiFePO<sub>4</sub> (Lithium Iron Phosphate) batteries are an excellent choice for DIY energy storage systems.



### [12V 400Ah bulk and absorption charge parameter settings](#)

Introduction Lithium Iron Phosphate (LiFePO<sub>4</sub>) batteries have gained popularity for their high energy density and long cycle life. To ensure the safety and optimal performance of ...



## Multi-objective planning and optimization of microgrid lithium iron

Lithium iron phosphate battery (LIPB) is the key equipment of battery energy storage system (BESS), which plays a major role in promoting the economic and stable ...





### [Lithium Iron Phosphate Battery Custom Settings v02](#)

There are three charge settings and three load settings to select from, "Low", "Medium" and "High". These three settings correspond to the range of settings that we have developed with ...



## **Lithium-ion Battery Safety**

A lithium-ion battery contains one or more lithium cells that are electrically connected. Like all batteries, lithium battery cells contain a positive electrode, a negative electrode, a separator, ...



## **LiFePO4 Battery User Manual**

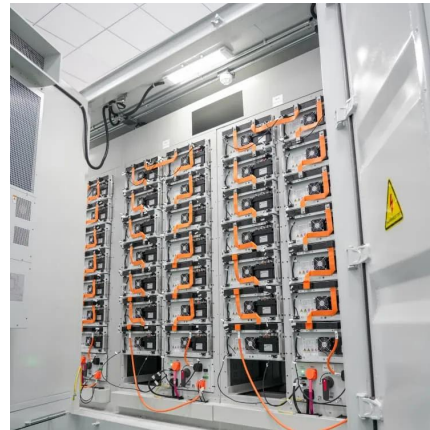
This product specification applies to lithium iron phosphate battery products provided by our company. The product we provide (and which is described in this manual) complies with the ...





## Lithium-Iron Phosphate Battery

It has the ability to perform various battery management parameters such as cell overvoltage and undervoltage, pack total voltage over and undervoltage, charging overcurrent, discharging ...



## Contact Us

---

For catalog requests, pricing, or partnerships, please visit:  
<https://www.bringmethehorizon.eu>