



**SolarMax Pro Energy Storage Systems**

# **Lithium battery site cabinet sleep mode**





## Overview

---

How to wake a sleeping lithium ion battery pack?

Before deciding to discard off a purportedly dead lithium ion motorcycle battery, let's take a glance at ways that of how to wake a sleeping lithium ion battery pack. Step 1: Browse the voltage. First of all, you'd prefer to verify if your lithium-ion battery has some charge remaining.

Can a lithium ion battery go into sleep mode?

For various reasons, a perfectly good lithium ion battery can end up in sleep mode, so it's important to know how to wake up a BMS. A BMS can go into sleep or safe mode due to a variety of circumstances. When this happens, it can be a major pain to deal with and it can make a battery seem like it's broken.

How do you know if a lithium ion battery is in sleep mode?

Use a multimeter to measure the battery's voltage. Lithium-ion batteries typically enter sleep mode when their voltage drops below a critical level (often around 2.5V). If the voltage is still above this level, proceed with the recovery methods. However, if it's well below 2.5V, waking the battery may be more difficult and risky. 3.

Does a lithium iron battery have a sleep mode or protection mode?

If you are new to using lithium iron batteries, you may not even know that sleep mode or protection mode is even a thing. Both of these modes are part of the battery management system (BMS) built into the battery to help manage and improve the performance and safety of the battery.

Does a sleeping lithium ion reveal the voltage?

A sleeping Li-ion does not reveal the voltage, and boosting must be done with awareness. Li-ion is more delicate than other systems and a voltage applied in reverse can cause permanent damage. Storing lithium-ion batteries presents



some uncertainty.

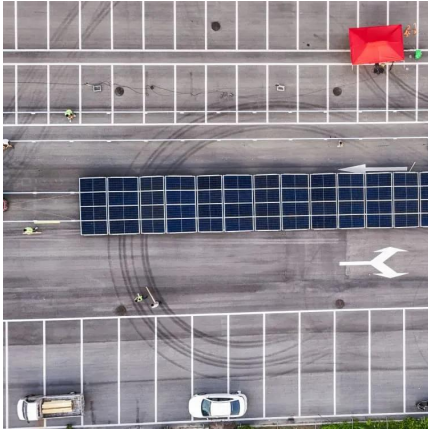
What if my battery is in sleep mode?

If your battery's rate is 4.0 volts and the voltmeter reads 2.0 volts, it could be in sleep mode. Keep in mind that different manufacturers will cause the battery to go into sleep mode at different voltage levels. As a result, it's a good idea to get to know your battery's capacity so you can wake it up. Step 2: Connect to a charger.



## Lithium battery site cabinet sleep mode

---



### [How to Wake Up a BMS in Sleep or Safe Mode](#)

Best case scenario, all you will have to do is detach and reattach the load from the battery to wake up a BMS. This, however, will only work if your BMS has auto-recovery. If that ...

### [How to Wake a Sleeping Lithium-ion Battery](#)

Sleep mode happens when a lithium-ion battery is under-charged. It can be a cause of concern as such batteries are assumed to be useless by most people and discarded as the ...



### [INSTALLATION, OPERATIONS and MAINTENANCE ...](#)

Operations Manual Product Introduction Narada MPL series of Lithium Iron Phosphate (LFP) 48V / 51.2V Batteries are a safe and reliable product for equipment site backup power systems, ...

### [Li-ion batteries in storage : r/batteries](#)

Make sure the batteries are in a fire-safe location and cabinet, my friend's work just had their battery cabinet go up in flames about a year ago.





Their investment in a fire safe cabinet was ...



## 20 Station Lithium-Ion Battery Charging & Storage Cabinet

The 20 Station Lithium-ion Battery Charging Storage Cabinet offers secure storage and charging Lithium-ion batteries, Buy Direct From The Manufacturer .



## [How to wake a sleeping lithium ion battery](#)

Learn how to keep a Li-ion battery from going into sleep mode. Lithium-ion battery storage is a bit of a risk. On one hand, manufacturers advise keeping them charged at 40-50 percent, while ...



## Lithium battery sleep mode

Why do lithium ion batteries enter sleep mode? Lithium-ion batteries enter sleep mode due to self-discharge or over-discharge. Self-discharge occurs when the battery is left unused for an ...





## Choosing the Right Lithium Ion Battery Cabinet: A Complete Guide

The right lithium ion battery cabinet is a vital investment for any business using rechargeable power systems. It protects against fire, enhances compliance, and streamlines ...

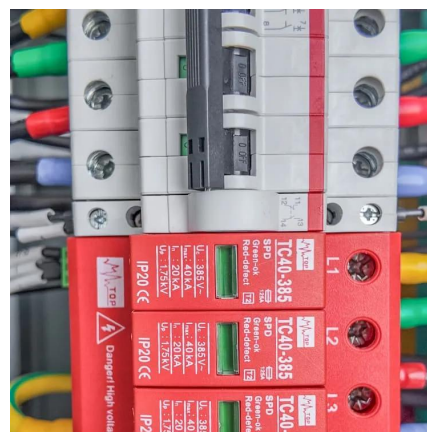


### 5 Easy Ways to Wake up Lithium Battery

Here are 5 relatively safe ways to attempt to wake up lithium battery. 1. Check the Battery Voltage. Before attempting to revive a sleeping battery, it's crucial to measure its ...

### BU-808a: How to Awaken a Sleeping Li-ion

Slipping into sleep mode can happen when storing a Li-ion pack in a discharged state for any length of time as self-discharge would gradually deplete the remaining charge.



### The Ultimate Guide to Lithium-Ion Battery Storage ...

Discover the importance of lithium-ion battery storage cabinets for safe battery storage and charging. Learn best practices, key features, and ...



### [How to Wake a sleeping Lithium ion Battery pack](#)

Before deciding to discard off a purportedly dead lithium ion motorcycle battery, let's take a glance at ways that of how to wake a sleeping lithium ion battery pack.



### [How to Wake a sleeping Lithium ion Battery pack](#)

Before deciding to discard off a purportedly dead lithium ion motorcycle battery, let's take a glance at ways that of how to wake a sleeping lithium ion battery ...



### [Allied Lithium Best Practices User Guide](#)

Allied Solenoid & Sleep Mode Integration: Enhanced Protection System Pairing your Allied lithium battery with an Allied Solenoid creates a comprehensive protection system that maximizes ...







### [What is the best way to wake up a lithium battery?](#)

If a lithium-ion battery does not accept a full charge or does not work after an extended period of time, it may be in sleep mode. Here we introduce ...

### **What is battery sleep? How to activate lithium battery sleep?**

How to activate lithium battery sleep? When some friends are using the mobile phone, due to some bad habits, such as playing mobile games while charging under low ...



### [BU-808a: How to Awaken a Sleeping Li-ion](#)

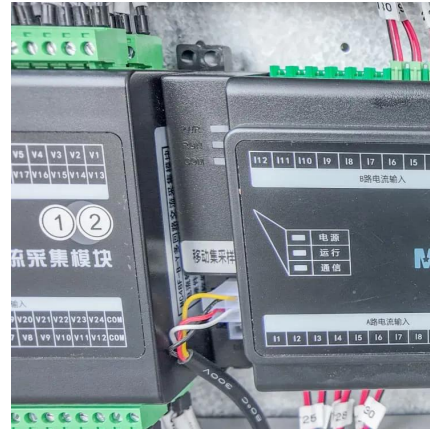
Slipping into sleep mode can happen when storing a Li-ion pack in a discharged state for any length of time as self-discharge would gradually ...



### **Allied Lithium Golf Cart Battery Blog Tagged "sleep mode"**

Discover the power of Allied Lithium batteries for golf carts! Our blog showcases battery installations, trusted dealers, and the latest in lithium technology. Elevate your golf carting ...





### [How to wake a sleeping lithium ion battery](#)

Best case scenario, all you will have to do is detach and reattach the load from the battery to wake up a BMS. This, however, will only work if your BMS has auto-recovery. If that ...



## **How to Safely Wake Up a Lithium-Ion Battery: A Step-by-Step Guide**

This is commonly known as the "sleep mode" or "deep discharge state." How to Safely Wake Up a Lithium-Ion Battery If your lithium-ion battery appears unresponsive, try the ...



## **How to Awaken a Sleeping Li-ion**

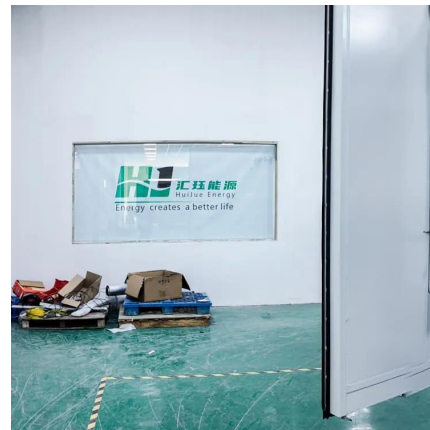
Learn what you can do to prevent a Li-ion battery to fall asleep. Li-ion batteries contain a protection circuit that shields the battery against abuse. This important safeguard ...





## [BU-808a: How to Awaken a Sleeping Li-ion](#)

Figure 1: Sleep mode of a lithium-ion battery  
Some over-discharged batteries can be "boosted" to life again. Discard the pack if the voltage does ...

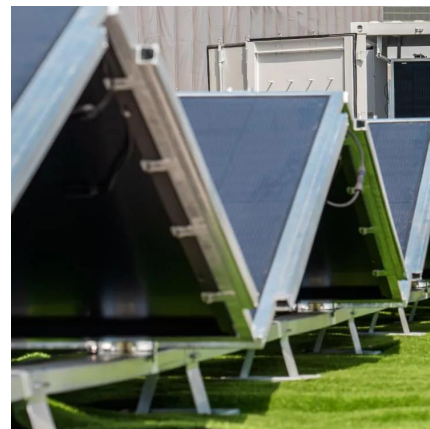


## [Li batteries going to sleep? , Forest River Forums](#)

Hi All, some of the fishing forums state that Li batteries will go to sleep if not very recently charged. They recommend a small jump start battery to wake u the battery. Can ...

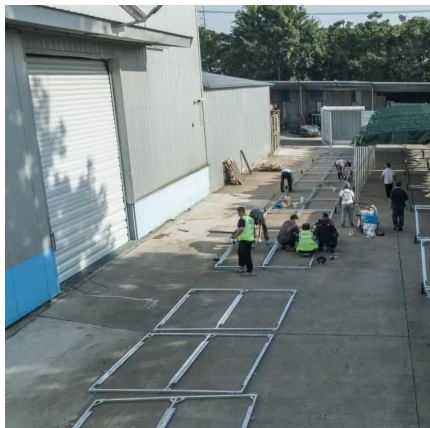
## [How to Wake Up a Sleeping Lithium Battery - Hinen](#)

Learn how to wake up a lithium battery safely and effectively. Discover the causes of sleep mode and practical steps to restore your battery's functionality.



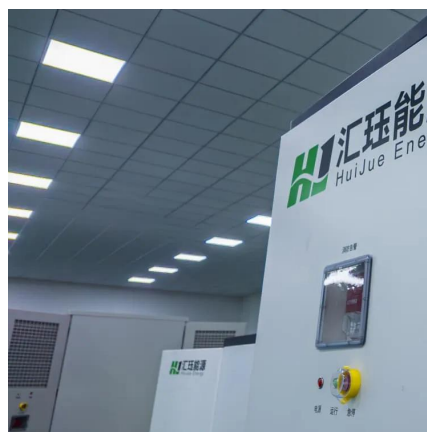
## [How to Wake Up a Sleeping Lithium Battery - Hinen](#)

Learn how to wake up a lithium battery safely and effectively. Discover the causes of sleep mode and practical steps to restore your ...



### How to Effectively Wake Up a 48V Lithium Battery?

Waking up a 48V lithium battery that has gone into sleep mode can be essential for restoring its functionality, especially after prolonged inactivity or deep discharge. ...



## Contact Us

---

For catalog requests, pricing, or partnerships, please visit:  
<https://www.bringmethehorizon.eu>