



SolarMax Pro Energy Storage Systems

Lithium battery series and parallel connection





Lithium battery series and parallel connection



What is lithium battery series and parallel connection, series and

In a lithium battery pack, several lithium batteries are connected in series to get the required working voltage. If you need higher capacity and higher current, you should connect the power ...

Lithium Series, Parallel and Series and Parallel Connections

Connecting lithium-ion batteries in parallel or in series is not as straightforward as a simple series-parallel connection of circuits. To ensure the safety of both the batteries and the individual ...



Connect Batteries in Series and Parallel: What's the Best Way for ...

Connecting batteries can be simple once you know the basics. In series, voltage adds up while capacity stays the same--like two 12-volt, 100 AH batteries making 24 volts, ...



[Battery Series and Parallel Connection Calculator](#)

Battery Series and Parallel Connection Calculator
Battery Voltage (V): Battery Capacity (Ah):



Number of Batteries: Calculate Linking multiple batteries either in series or ...

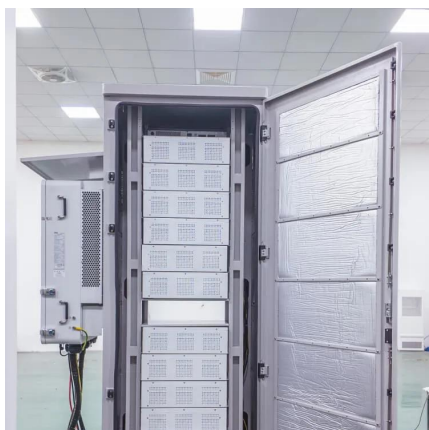
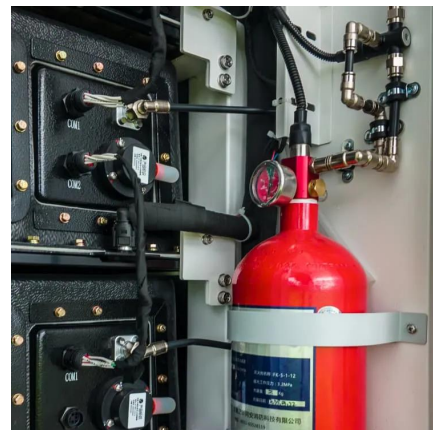


[Batteries in Parallel vs Series, All You Need to Know](#)

From smartphones to electric vehicles, batteries power our daily lives. This blog post unravels the mysteries of parallel and series connections

LiFePO4 Lithium Batteries in Series VS Parallel Connection

Connecting lithium-ion batteries in parallel or series is more complex than merely linking circuits in series or parallel. Ensuring the safety of both the batteries and the person ...



[Battery Series vs Parallel Explained](#)

Did you know that wiring batteries incorrectly can reduce their lifespan by 40% or even cause dangerous overheating? Whether you're powering an RV, solar panel system, or ...



[How to Connect & Charge Batteries in Series / Parallel](#)

Hopefully this tutorial bridged the gap in your understanding series connections and will provide you the confidence needed help connect and charge your batteries in series ...



[Batteries in Series vs Parallel: Which is Better?](#)

Do you know the difference between batteries in series vs parallel? Find out how to connect batteries in series or parallel & discover which one's best for you!

[LiFePO4 Lithium Batteries in Series VS Parallel ...](#)

Connecting lithium-ion batteries in parallel or series is more complex than merely linking circuits in series or parallel. Ensuring the safety of ...



Study of non-uniform temperature and discharging distribution for

Uneven behavior of temperature is always observed among battery modules during charge and discharge. In this paper, an electrochemical-thermal model is established to ...



How To Connect Batteries In Series And Parallel?

While researching lithium batteries, you've probably seen the terms series and parallel mentioned. We are frequently asked the questions like, ...



Connect Batteries in Series and Parallel: What's the ...

Connecting batteries can be simple once you know the basics. In series, voltage adds up while capacity stays the same--like two 12-volt, 100 ...

Batteries in Series and Batteries in Parallel , Electrical4U

Parallel Connection: In parallel batteries, all positive terminals are connected together, and all negative terminals are connected together, ...



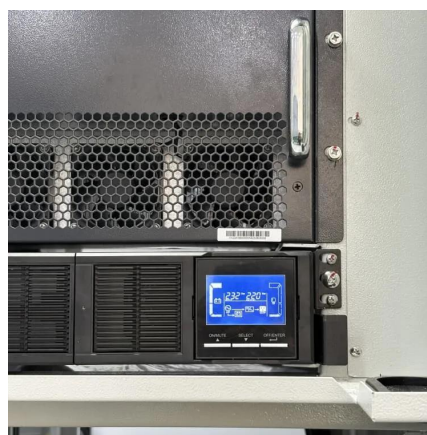


[How To Connect Batteries in Series and Parallel](#)

Connecting batteries in series increases total voltage while maintaining capacity, ideal for high-voltage devices like solar inverters. Parallel connections boost capacity (ampere ...

[Batteries in Parallel vs Series, All You Need to Know](#)

Deciding between series and parallel battery wiring depends on your voltage and capacity needs. Series increases voltage while keeping ...



Science Behind Lithium-ion Batteries in Series vs Parallel

In a series connection, the voltage increases while capacity remains the same, whereas a parallel connection increases capacity without changing voltage. This guide will ...

How to Connect Lithium Batteries in Series and Parallel?

In this article, we'll explore the basics and provide detailed, step-by-step instructions on how to connect lithium batteries in series, parallel, and series-parallel configurations.



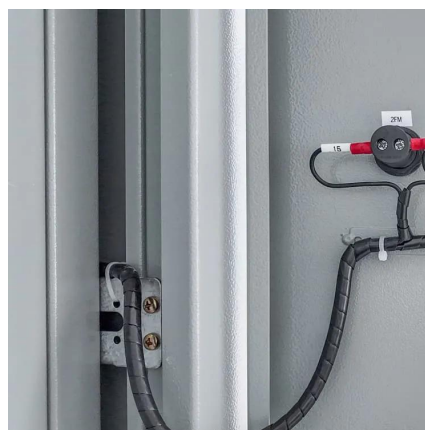
[How to Balance Lithium Batteries in Parallel](#)

Wiring batteries in series increases the total voltage while wiring batteries in parallel increases the capacity. It's essential to size the cable ...



[Batteries in Parallel vs Series, All You Need to Know](#)

Deciding between series and parallel battery wiring depends on your voltage and capacity needs. Series increases voltage while keeping capacity the same, and parallel ...



[Science Behind Lithium-ion Batteries in Series vs ...](#)

In a series connection, the voltage increases while capacity remains the same, whereas a parallel connection increases capacity without ...





How To Wire Lithium Batteries In Parallel Increase Amperage

In this article, we will explain why you would want to wire lithium-ion batteries in parallel, how you wire them in series and how to charge battery cells while in series.



Lithium Series, Parallel and Series and Parallel Connections

As shown below in battery bank A, B, and C, making parallel connections of higher voltage lithium batteries increases the redundancy and overall performance of the electrical system versus ...

[Series vs Parallel Battery Wiring: Key Differences, ...](#)

When using multiple batteries in a project, you have two primary wiring configurations--series and parallel. Each has distinct advantages ...



How to Connect Lithium Batteries in Series and Parallel?

In this article, we'll explore the basics and provide detailed, step-by-step instructions on how to connect lithium batteries in series, parallel, and ...



Batteries in Series vs Parallel: Which is Better

Explore the differences between series and parallel, the benefits and drawbacks of the two configurations, and which connection is better for ...



Ultimate Guide of LiFePO4 Lithium Batteries in Series & Parallel

Connecting lithium-ion batteries in parallel or in series is not as straightforward as a simple series-parallel connection of circuits. To ensure the safety of both the batteries and the individual ...

How to Connect Lithium Batteries: Series and Parallel ...

When connecting lithium batteries, especially in series or parallel, it is highly recommended to use batteries of the same type, age, and capacity. Mixing different batteries ...





Series vs Parallel Battery Wiring: Key Differences, Pros & Cons

When using multiple batteries in a project, you have two primary wiring configurations--series and parallel. Each has distinct advantages depending on your needs, ...

Series, Parallel, and Series-Parallel Connections of Batteries

Series connection results in voltages adding and amperage remaining the same while parallel connection results in amperages adding and voltages remaining the same. Series-parallel ...



Batteries in Series vs Parallel: Which is Better?

Do you know the difference between batteries in series vs parallel? Find out how to connect batteries in series or parallel & discover which one's best for you!

Contact Us

For catalog requests, pricing, or partnerships, please visit:
<https://www.bringmethehorizon.eu>