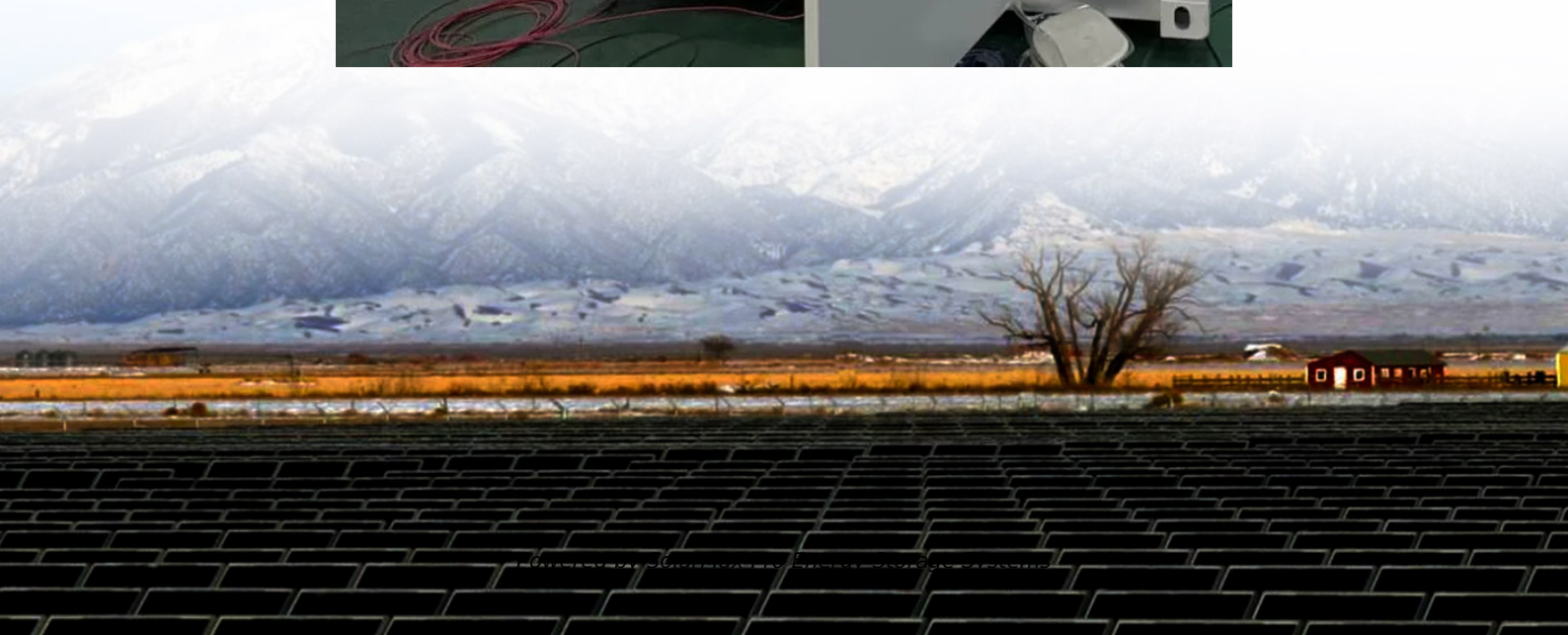




SolarMax Pro Energy Storage Systems

Lithium battery pack constant voltage discharge





Overview

Lithium-ion batteries use the CC-CV (constant current – constant voltage) charging method. Voltage rises during constant current charging, then current decreases during the constant voltage phase. At higher discharge rates, you see a reduction in discharge capacity.



Lithium battery pack constant voltage discharge

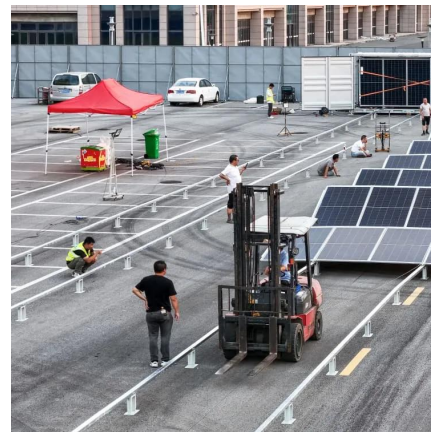


Constant Voltage and Current in Li-Ion Cell and ...

CV and CC operation is useful for lithium-ion cell and battery testing. Standard charging uses both CC and CV operation while standard ...

Analysis of the Charging and Discharging Process of ...

Apart from the many advantages of this type of battery offers, such as high power and energy density, a high number of charge and discharge ...



Lithium Battery Pack Aging Cabinet

The battery charge and discharge machine is primarily used for the battery life cycle testing, such as 18650 battery pack, 21700 battery pack, lithium ion polymer battery... The 18650 Battery ...

Electrochemical modelling of Li-ion battery pack with constant voltage

In this paper, the Pseudo-Two-Dimensional (P2D) porous electrode model is extended to a battery



pack layout, to predict the overall behaviour and the cell-to-cell variation ...

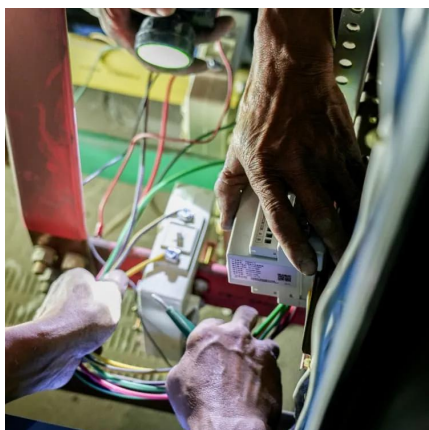


12 Ways Lithium Battery Charging & Discharging Explained With ...

Constant Voltage (CV) discharging is a method where the battery voltage is held constant while the current decreases as the battery discharges. How it works: In this method, ...

Electrochemical modelling of Li-ion battery pack with constant ...

In this paper, the Pseudo-Two-Dimensional (P2D) porous electrode model is extended to a battery pack layout, to predict the overall behaviour and the cell-to-cell variation ...



[12 Ways Lithium Battery Charging & Discharging ...](#)

Constant Voltage (CV) discharging is a method where the battery voltage is held constant while the current decreases as the battery discharges. ...



Study on the Charging and Discharging Characteristics of the Lithium

This solution is based on treating and filtering a time series in real-time software, using the battery pack characteristic discharge curve and time series statistical features.



[PHOTOOLEX AAA Rechargeable Batteries Lithium 8 ...](#)

Shop PHOTOOLEX AAA Rechargeable Batteries Lithium 8 Pack with Charger, 1300mWh 1.5V Constant Voltage Output Li-ion Triple A Batteries, Low Self ...

[Study on the Charging and Discharging ...](#)

This solution is based on treating and filtering a time series in real-time software, using the battery pack characteristic discharge curve and time ...



[Understanding Charge-Discharge Curves of Li-ion Cells](#)

When the cells are assembled as a battery pack for an application, they must be charged using a constant current and constant voltage (CC-CV) method. Hence, a CC-CV ...



Charging Lithium-Ion and LiPo Batteries the Right Way

Typically, PMICs charge LiPo and Lithium-Ion batteries using the CC-CV method. The battery gets charged with a constant current until the cell reaches its maximum voltage. ...



Battery Charge-Discharge Test , ESPEC CORP.

In addition to charge/discharge testing, ESPEC provides lithium-ion battery evaluations, and safety testing, test consulting and certification services for vehicle battery packs/modules.

BU-501a: Discharge Characteristics of Li-ion

One of the unique qualities of nickel- and lithium-based batteries is the ability to deliver continuous high power until the battery is exhausted; a fast electrochemical recovery ...





What Are the Discharge Characteristics of Li-ion Batteries

Lithium-ion batteries use the CC-CV (constant current - constant voltage) charging method. Voltage rises during constant current charging, then current decreases during the ...

How to discharge and charging lithium iron phosphate ...

In order to charge lithium iron phosphate batteries, it is necessary to use a voltage regulator circuit and an adapted lithium iron phosphate ...



Lithium battery charge and discharge test methods are explained

Button battery charging and discharging modes include constant current charging, constant voltage charging, constant current discharging, constant resistance discharging, ...

WHITE PAPER: LITHIUM BATTERY CHARGING

Li-Ion cells require a constant current, constant voltage (CC/CV) type of charger. Charge current flows into the cell at constant rate of 0.5C to 1C rate until the cell voltage reaches 4.20 volts. At ...



Constant Current and Constant Voltage Charging

Understanding Constant Current and Constant Voltage Charging of lithium-ion polymer battery
In the realm of battery technology, particularly for rechargeable batteries like lithium-ion polymer ...



Which is better, a lithium or NiMH battery?

12 hours ago· Lithium batteries typically use a constant current constant voltage (CCCV) charging method, which initially charges at a constant current. Once the voltage reaches a ...



Constant Voltage and Current in Li-Ion Cell and Battery Test

CV and CC operation is useful for lithium-ion cell and battery testing. Standard charging uses both CC and CV operation while standard discharging uses negative CC ...





[How to Discharge a Lithium Battery: A Step-by-Step Guide](#)

Understanding how to properly discharge a lithium battery is essential for its longevity and optimal performance. In this guide, we will walk you through the steps involved ...



[Does a Battery Lose Voltage As It Discharges? \(Why ...](#)

As a battery discharges, the voltage it produces decreases. However, the amount of voltage lost during discharge depends on the type of ...



[Lithium battery charge and discharge test methods ...](#)

Button battery charging and discharging modes include constant current charging, constant voltage charging, constant current discharging, ...



Contact Us

For catalog requests, pricing, or partnerships, please visit:
<https://www.bringmethehorizon.eu>