



**SolarMax Pro Energy Storage Systems**

## **Lithium battery pack 36v charging voltage 42**





## Overview

---

What is the optimal charging voltage for a 36V battery?

A 36V lithium-ion battery typically requires a charging voltage of 41.4V–42.5V (3.45V–3.55V per cell) for balanced performance and longevity. LiFePO4 batteries need 43.8V–44.4V (3.65V–3.7V per cell).



## Lithium battery pack 36v charging voltage 42

---

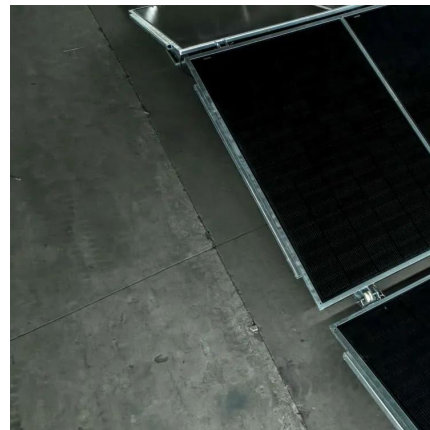


### How to Understand the Voltage of a Fully Charged 36V Lithium Battery

A fully charged 36V lithium battery typically exhibits a voltage of about 42V. The voltage varies with the state of charge, starting from around 36V when nearly depleted and ...

### [Amazon : CHINS 36V 100Ah Lithium Golf Cart ...](#)

?Fast Charging Function?: CHINS 43.8V 10A LiFePO4 battery charger is special for charging 36V lithium iron phosphate (LiFePO4) battery. ...



### 36 VOLT CHARGER TUTORIAL

The peak charging voltage for Gel batteries is 2.3 to 2.36 volts per cell, and for a 36 volt charger this works out to 41.4 to 42.5 volts, which is lower than a wet or AGM type battery needs for a ...

### "36v Charger" , "36v Charger" at Temu(TM) , [Temu] "36v Charger"

Only Today, Enjoy "36v Charger" Up To 90% Off Your Purchase. Hurry & Shop Now. Stop swiping



down the screen. Big discounts on our products here - up to 90% off!

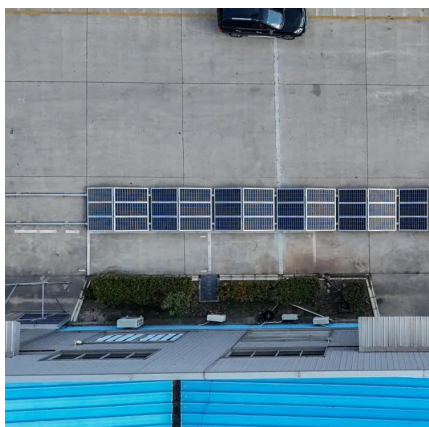


### What voltage should a 36V battery be charged at?

When it comes to charging a 36V battery, the recommended voltage can vary depending on the type of battery you are dealing with. Each type has its own specific ...

### Can I Charge a 36V Battery with a 42V Charger?

The nominal voltage of a 36V lithium battery is typically based on a configuration of 10 cells in series, each with a nominal voltage of 3.6V. When fully charged, these cells ...



### **What Is the Fully Charged Voltage of a 36V Lithium Battery?**

The fully charged voltage of a 36V lithium battery typically reaches approximately 42 volts to 43.8 volts, depending on the specific battery chemistry and manufacturer ...





### What Should a 36V Battery Charge at? (In-depth Analysis)

The nominal voltage of a 36V lithium battery is typically based on a configuration of 10 cells in series, each with a nominal voltage of 3.6V. When fully charged, these cells ...



### **36V 37V 42V 9.6Ah 30A 9600mAh Lithium Li-ion Battery Pack**

Longer storage life than NiMH battery Built-in IC chip will prevent battery pack from over charge, over discharge and prolongs battery life Perfect for building 36V battery pack for eBike, ...

### What Is A 36V Lithium Battery Charger?

A 36V lithium battery charger is a specialized device delivering 42-54V (CC-CV) to safely charge 36V Li-ion or LiFePO4 packs. It uses adaptive current (5-10A typical) and ...



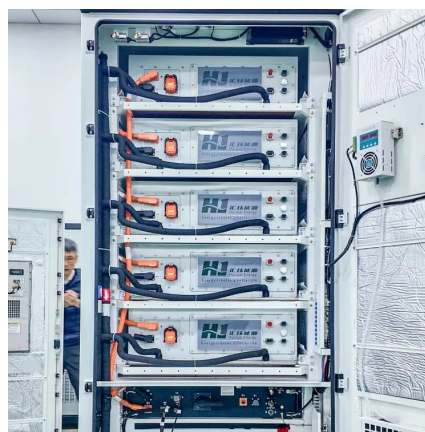
### 36V battery 42V charger? : r/ElectricScooters

36 Volt only means that that's the average voltage of the battery - fully charged your pack has 42V, so you need a 42V charger! You could also just have looked at the backside of your old ...



### Can I use a 42V charger on a 36V battery?

You should not use a 42V charger on a 36V battery because the higher voltage can overcharge and damage the battery, reducing its lifespan or causing safety risks. ...



### 36V 15Ah (10S6P) Lithium-Ion Battery Pack

36V 15Ah (10S6P) LITHIUM-ION Battery pack provides tremendous energy. The 10S6P format combines ten cells in series for a nominal voltage of 36V and six parallel sets for ...



### What Should a 36V Battery Charge at? (In-depth Analysis)

Most 36V batteries require a charging voltage of between 42 and 58 volts. However, some batteries may require a higher CCA or lower voltage, so it's always best to check your ...





## 36V Marine Lithium Charger

Shop Highest Quality Marine Accessories. Find Those Hard To Find Parts Today! High Quality Marine Accessory, Replacement, & Custom Parts. Bulk Pricing Discounts!

## 42V 5A Charger 42 Volt 5 Amp Li-ion Battery Charger with XLR ...

Buy 42V 5A Charger 42 Volt 5 Amp Li-ion Battery Charger with XLR 3Prong Charger Plug for 10S 36V Lithium Battery Pack with Cooling Fan: Battery Chargers - Amazon FREE DELIVERY possible on eligible purchases



## [How To Charge A 36v Lithium Battery? - ZPRO LITHIUM](#)

Charging a 36V lithium battery requires careful attention to detail and adherence to best practices to ensure safe and efficient operation. ZPRO Lithium stands at the forefront of ...

## Lithium Battery Pack 36V 36Ah 18650 10S3P for Electric Bicycles ...

Battery Specifications: 36V 36Ah lithium-ion battery pack with a capacity of 36000mAh, coupled with a 42V 2A charger for efficient charging. High-Quality Battery: ...



### [Lithium Battery Chargers , 12V, 24V, 36V & 48V Options](#)

Lithium Battery Chargers: LiFePO4 & all lithium batteries chargers for 12V, 24V, 36V, & 48V batteries. Fast & safe charging to extend battery life.



### **42V Charger for 36V li-ion battery ? Yes read this guide**

36V are also labeled chargers for lead batteries and lifepo4 these chargers have a charging voltage even higher about 43.8V for a lead-acid battery can be even higher by 0.2V. ...



### [How to Properly Charge a 36V Lithium Battery](#)

To properly charge a 36V lithium battery, use a charger specifically designed for lithium batteries that matches the battery's voltage and current ...







## 36V LiFePO4 Cell Charge and Discharge Voltage Guide

The recommended charging voltage for a 36V LiFePO4 battery pack is between 42.0V and 43.8V. Charging within this range ensures the ...



### **Question Re: Charger Voltage Falling From 42.5 to 16 Volts**

Greetings, Friends. Once again, we come for succor and aid in time of need. This question concerns a battery and charger combination. The battery is a 36-volt, 20-amp, 3C, ...

### **Understanding the Voltage Threshold of a 36V Lithium-Ion Battery**

A 36V lithium-ion battery typically has a nominal voltage of 36 volts, with a fully charged voltage ranging from about 42 to 43.8 volts and a recommended safe minimum ...



### **Optimal Charging Voltage for a 36V Battery: Maximizing ...**

What is the optimal charging voltage for a 36V battery? A 36V lithium-ion battery typically requires a charging voltage of 41.4V-42.5V (3.45V-3.55V per cell) for balanced ...



### [Optimal Lithium Battery Charging: A Definitive Guide](#)

Unlock the secrets of charging lithium battery packs correctly for optimal performance and longevity. Expert tips and techniques revealed in our comprehensive guide.



## Contact Us

---

For catalog requests, pricing, or partnerships, please visit:  
<https://www.bringmethehorizon.eu>