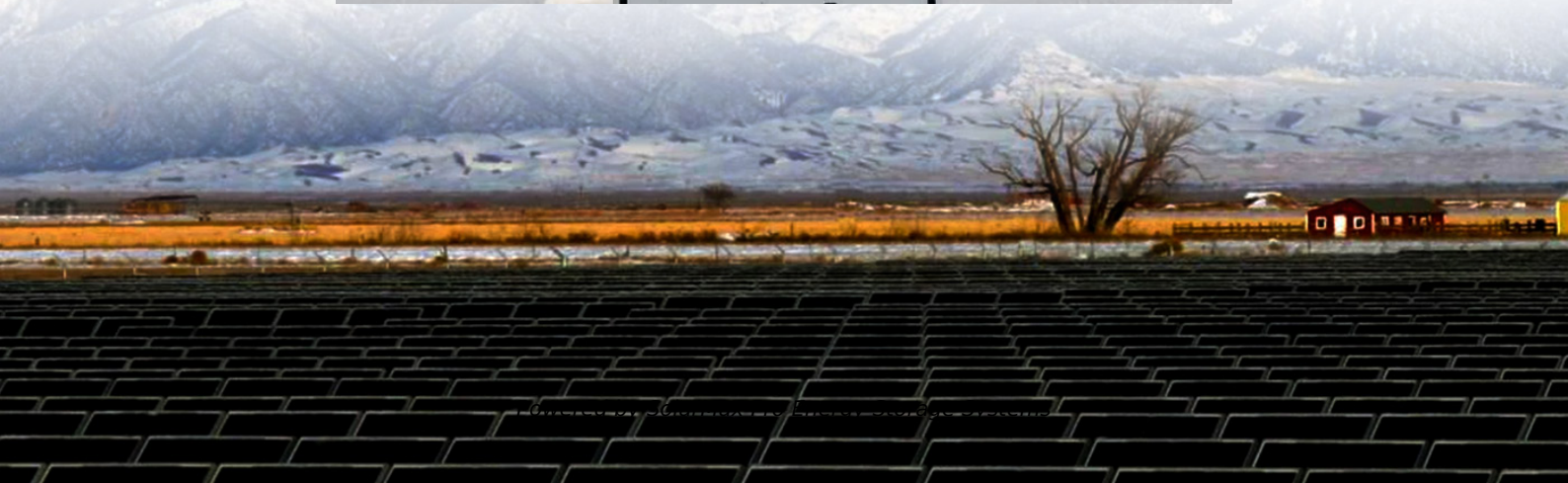


Is there any silver inside the old wind power supply of the base station





Overview

How do wind power stations work?

A wind power station, often known as a wind farm, captures wind's kinetic energy and turns it into electricity. Here's an explanation of how do wind power stations work internally: 1. Wind Turbines: Wind turbines are the principal component of a wind power facility. They consist of enormous blades attached to a hub installed on top of a tall tower.

What are the components of a wind power facility?

1. Wind Turbines: Wind turbines are the principal component of a wind power facility. They consist of enormous blades attached to a hub installed on top of a tall tower. Wind speeds rise with altitude, so the height of the tower is significant. 2. Wind Capture: As the wind blows, turbine blades rotate.

How do wind turbines work?

Each one is firmly fixed to a foundation piece on the seafloor, with a tower that extends up into the air where the blades can make use of higher wind speeds. Each wind turbine sends its power through cables down the tower and under the seabed to an offshore substation.

How much material does a 3 MW wind turbine need?

According to the Northwest Mining Association, A single 3-MW wind turbine needs: 335 tons of steel 4.7 tons of copper 1,200 tons of concrete (cement and ag.

What are wind power plants & how do they work?

Wind power plants, often known as wind farms, have become symbols of the renewable energy revolution. But what precisely are wind power plants, and how do they operate?

Let's take a closer look at how wind power stations work. A wind power



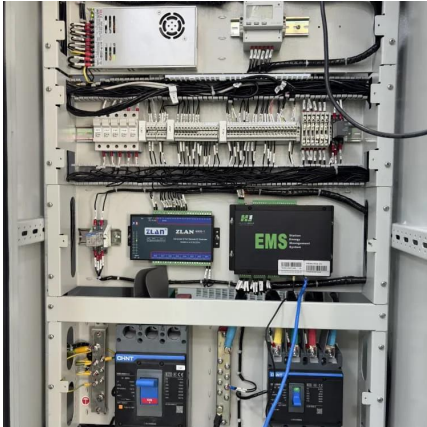
station, often known as a wind farm, is a facility that converts wind energy into electricity.

How does distributed wind energy work?

They can be owned and run by a utility company that then sells the power the plant makes to users, like homeowners, who connect to the electrical grid. Distributed wind energy describes wind energy projects that serve local energy demand generating on-site electricity for homes, schools, businesses, and farms.



Is there any silver inside the old wind power supply of the base station



No Power Fix

Struggling with the No Power warning in Dune: Awakening even after building a Fuel-Powered Generator and depositing a Fuel Cell? This quick and simple guide shows you exactly where to find the

How do offshore wind turbines work?

Each wind turbine sends its power through cables down the tower and under the seabed to an offshore substation. Here the energy is stepped up to a higher ...



[Power Up: What Keeps McMurdo Going? Science Roadshow](#)

The wind turbines are a joint venture with Antarctica New Zealand, and helps supply power to Scott Base. The wind turbines were erected in 2010. This is the switch gear ...

Wind Energy , Department of Energy

4 days ago · About two-thirds of U.S. offshore wind energy potential exists over waters too deep for today's fixed-bottom wind turbine



foundations and instead ...



Analysis of the Use of Wind Energy to Supplement the Power ...

We then used NREL's Hybrid2 power system modeling software to analyze the potential and cost of using wind turbine generators at the two aforementioned facilities. Unfortunately, the power ...



How do offshore wind turbines work?

Each wind turbine sends its power through cables down the tower and under the seabed to an offshore substation. Here the energy is stepped up to a higher voltage ready to send ashore ...



[How To Power And Connect A CB Radio To a Home ...](#)

To power a CB radio at home, you'll need a power supply module that provides 12 to 14 volts of direct current (DC). This is because CB radio ...





Overview of Wind Power in China: Status and Future

To ease the situation, greater use of wind energy in China could be the solution for energy conservation and sustainable environment in the long run. This paper describes the ...



Ross Island Wind Energy system

As part of the redevelopment, the wind farm above Scott Base will be upgraded and the three existing turbines will be replaced with three larger and more powerful ones.

Inside China's New Antarctic Station Built to Survive Anything

Instead, it draws power from ten 100-kilowatt wind turbines, 130 kilowatts of solar panels, and a hydrogen fuel cell system that can keep the station running for two weeks with zero sunlight



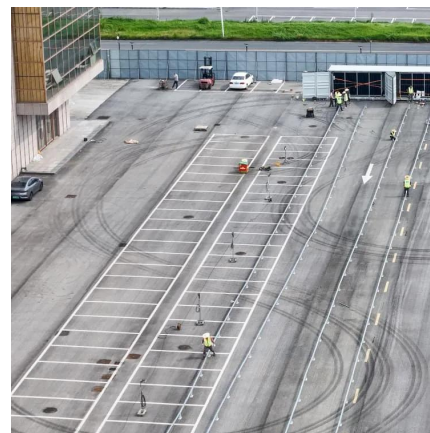
Wind Energy , Department of Energy

4 days ago· Wind power or wind energy is a form of renewable energy that harnesses the power of the wind to generate electricity. It involves using wind ...



Metals and minerals in wind turbines

According to the Northwest Mining Association, A single 3-MW wind turbine needs: 335 tons of steel 4.7 tons of copper 1,200 tons of concrete (cement and ag ...

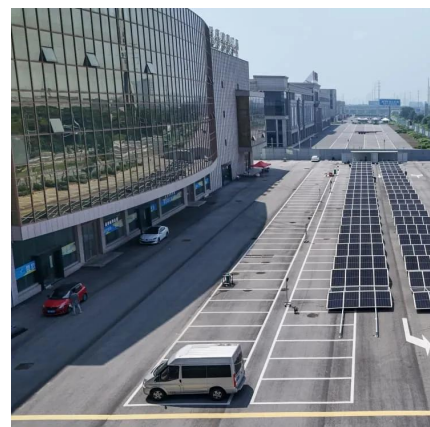


South Pole Electrical Infrastructure - brr

In the event of a catastrophic loss of utility of our power plant, we have an entire, separate, emergency power plant, located inside the elevated station itself.

What's inside a wind turbine? Discover the interior of a ...

In this article, we embark on a journey following a wind turbine technician and discover what is inside a wind turbine. Let's start with entering ...





Wind Energy , Department of Energy

4 days ago· About two-thirds of U.S. offshore wind energy potential exists over waters too deep for today's fixed-bottom wind turbine foundations and instead require floating offshore wind ...

Wind turbine

Wind Power Density (WPD) is a quantitative measure of wind energy available at any location. It is the mean annual power available per square meter of swept area of a turbine, and is ...

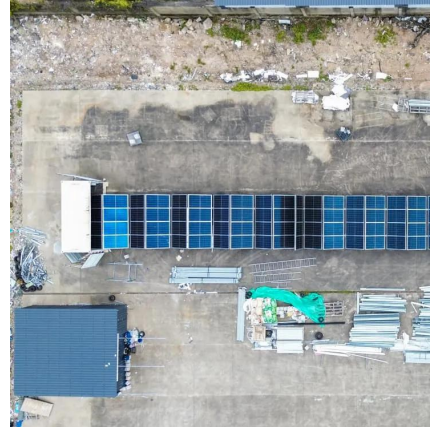


[How do power plants work? , How do we make electricity?](#)

One power station might be able to make electricity very cheaply (perhaps because it's very new and using natural gas) while another one (using old technology based ...

[How do power plants work? , How do we make electricity?](#)

A generator located within the turbine turns this rotating motion into electrical energy. The electricity generated by each turbine is usually ...



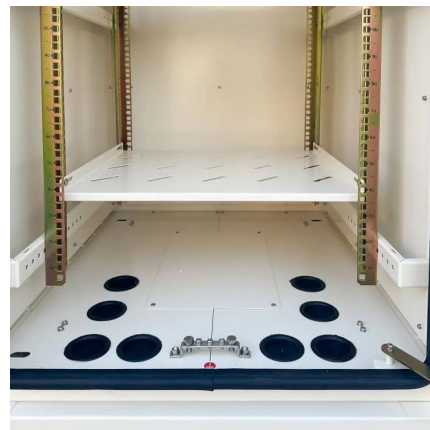
South Pole Electrical Infrastructure - brr

In the event of a catastrophic loss of utility of our power plant, we have an entire, separate, emergency power plant, located inside the elevated ...



Ross Island Wind Energy system

As part of the redevelopment, the wind farm above Scott Base will be upgraded and the three existing turbines will be replaced with three larger and more ...



How Do Wind Power Stations Work? A Detailed Look Inside

A generator located within the turbine turns this rotating motion into electrical energy. The electricity generated by each turbine is usually collected and sent to a substation ...





Powering Your Base Efficiently in Dune Awakening: A ...

Powering your base in Dune Awakening is critical in order to keep it protected from players and the elements. Read on to find out which methods ...



Renewables at the South Pole

The success seen at Mawson Station is already spreading, and other nations with operations in Antarctica have incorporated renewable resources for electricity generation. ...

Contact Us

For catalog requests, pricing, or partnerships, please visit:
<https://www.bringmethehorizon.eu>