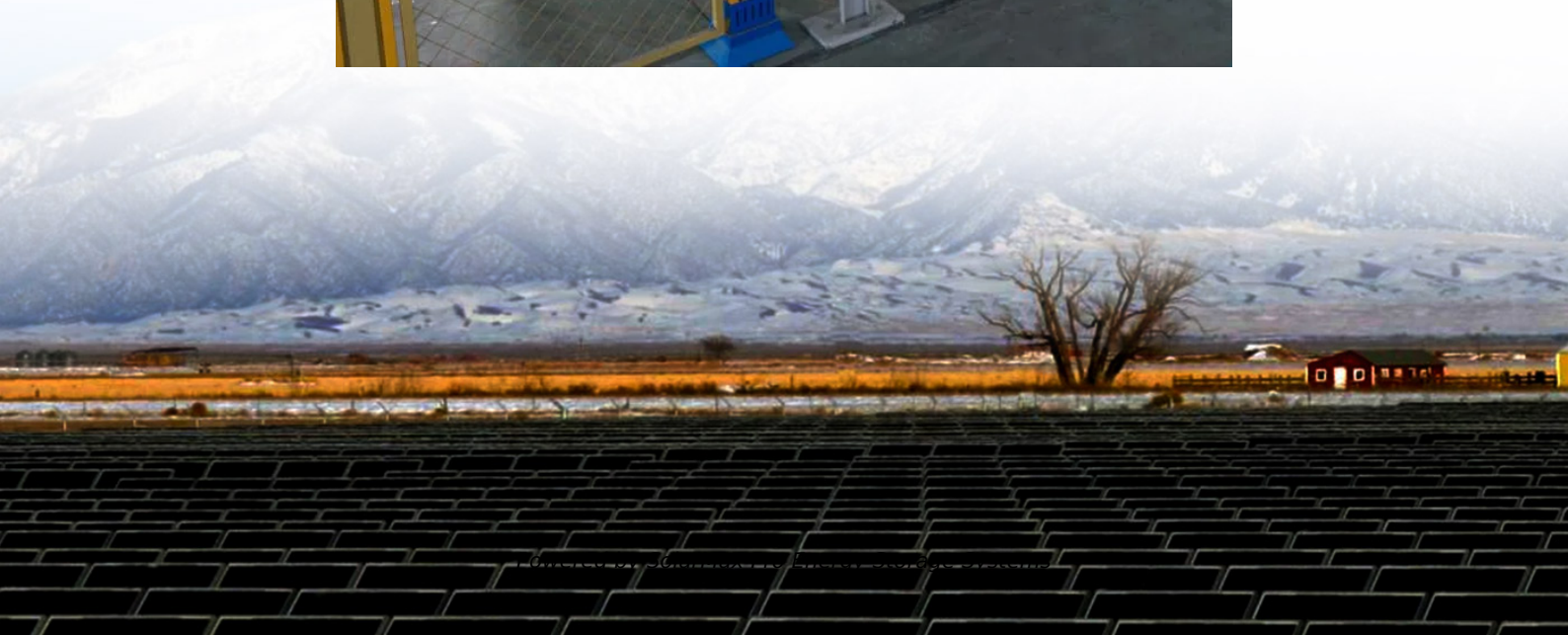




SolarMax Pro Energy Storage Systems

Is the outdoor power supply a consumable part





Overview

What is an external power supply?

Sign up for email updates on regulations for this and other products As defined in the Code of Federal Regulations (CFR), "external power supply" means an external power supply circuit that is used to convert household electric current into DC current or lower-voltage AC current to operate a consumer product.

What are the different types of external power supplies?

External power supplies ranging from 6W to 300W. Cost-effective solutions that keep your products running at peak performance.

How many external power supplies are there in the EU?

In 2020, 1.7 billion external power supplies (EPS) were in use in the EU27, of which 75% for residential use, on average 6.5 units per EU household. They converted 48 TWh/a of electricity from the 220V mains to the input needed by the powered products.

What is the difference between consumables and supplies?

Consumables, on the other hand, are specifically items that are intended to be used up and are regularly replaced, such as office supplies like paper and ink. Supplies can include both durable and non-durable goods, covering a wide range of items from office furniture to computer hardware.

What is a wall plug power supply?

They are sometimes known as desktop, wall mount, plugtop or wall plug power supplies. Like any other power supply, these products will convert AC supply voltages to a safe low-level DC voltage used to power equipment or to charge batteries. Where are external power supplies used?

.



What is the external power supplies test procedure rulemaking docket eere-2014-bt-tp-0043?

The external power supplies test procedure rulemaking docket EERE-2014-BT-TP-0043 contains all notices, public comments, public meeting transcripts, and supporting documents pertaining to this rulemaking. There is no public meeting scheduled at this time. The comment period is closed.



Is the outdoor power supply a consumable part

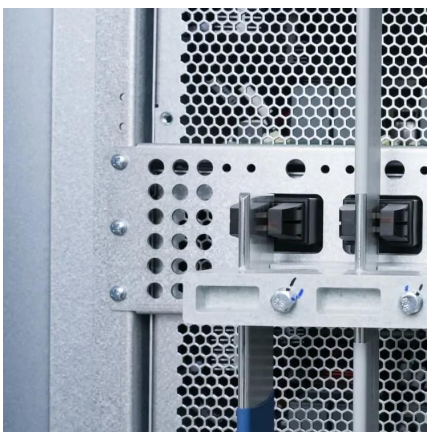
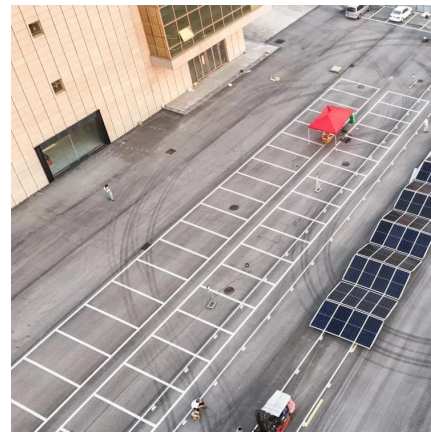


Supply vs. Consumable -- What's the Difference?

Supply refers to a stock or amount of resources available for use; consumable specifically denotes items intended for consumption and replacement, often in business or ...

How to choose an outdoor power supply?

How to choose an outdoor power supply? The only purpose of this article is to save your time with the data I have compiled and to provide you with a comprehensive ...



Spare Parts Inventory Management for Power Plant Maintenance ...

Efficiently manage your power plant's spare parts inventory to prevent downtime and ensure smooth operations. Discover practical tips and strategies here.

How to choose an outdoor power supply?

The temperature control of the whole power supply is very good, and the AC output of 220V is



also very stable, and it is a pure sine wave, so there is no need to worry about ...



External power supplies

An external power supply removes the need for more complex embedded power supply application designs, taking the hazardous AC supply and heat generated energy outside of the ...



External Power Supplies

As defined in the Code of Federal Regulations (CFR), "external power supply" means an external power supply circuit that is used to convert household ...



Consumables & Spares

High quality consumables, accessories and software, essential for the day to day operation of your Magnetic Resonance, Mass Spectrometry, Diffractometer & ...



[Replacement Parts , Tractor Supply Co.](#)

Find the Parts You Need Shop Parts By Category -
Click Below to See More Parts Options Auto &
Truck Parts Trailer & Hitch Parts Power Sports
Equipment Parts



Outdoor power supply

The outdoor power supply can convert DC power into AC power that can be used by other electrical appliances through the inverter, and also supports DC output of multiple ...

External Power Supplies

As defined in the Code of Federal Regulations (CFR), "external power supply" means an external power supply circuit that is used to convert household electric current into DC current or lower ...



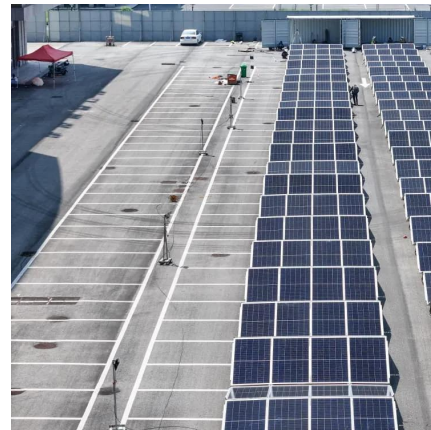
Market Analysis & Stats , Outdoor Power Equipment Institute

Market Statistics & Forecasting Market Statistics & Forecasting OPEI provides exclusive shipment data and market forecasts for the complete spectrum of outdoor power equipment and power ...



Spare Parts vs. Accessories vs. Consumables: What To Know

This guide will help you better understand the difference between spare parts, accessories, and consumables and what to know to ensure you purchase the right items.



Gardner Inc. , Home

As a leader in the lawn & garden, outdoor power, and tool industry, our reputation has been built on our ability to deliver products of the highest quality from the industry's top manufacturers. ...

What Is A Consumable Part?

What Is A Consumable Part? What is a Consumable Part? In various industries and fields such as manufacturing, automotive, and technology, the term "consumable part" is ...



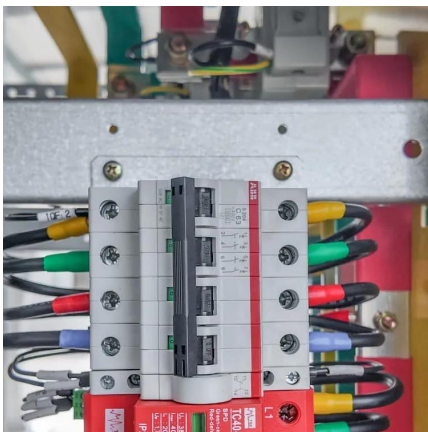


Spare Parts vs. Accessories vs. Consumables: What To Know

Supply refers to a stock or amount of resources available for use; consumable specifically denotes items intended for consumption and ...

[Understanding The Different Types Of Spare Parts ...](#)

Learn about the various types of spare parts and their specific roles in machinery. Streamline your maintenance processes and boost ...



Definitions and Scope of Coverage for External Power ...

While a power supply that meets the definition of an "external power supply" under EPCA8 would be considered a "covered product,"⁹ DOE has established energy conservation ...

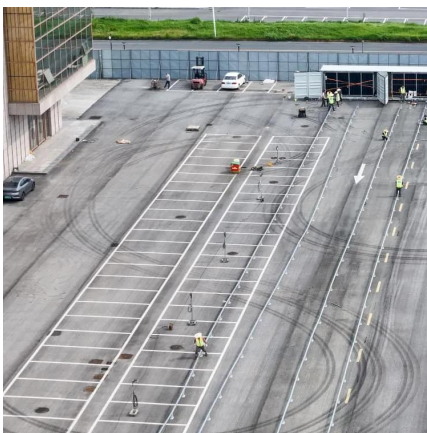
[Outdoor Power Parts & Equipment Henry's Parts](#)

Henry's® provides a quality dealer channel line of outdoor power equipment replacement parts, shop tools and equipment for a variety all brands and ...



Consumable vs. Expendable -- What's the Difference?

Consumables, especially those part of a circular economy, might have sustainable options or recycling programs, like refillable cartridges. Expendables, depending on their ...



External Power Supplies

Active efficiency is the average efficiency when a power supply is connected to a device, for example a laptop, when it is being used. No-load power consumption is the power consumed ...



Intermatic IModule(TM) IG120RSM10K Replacement Module for ...

Intermatic's Smart Guard Surge Protective Device (SPD) uses TPMOV (Thermally Protected Metal Oxide Varistor) technology to protect your home or lite commercial environment from surges in power supply, eliminating the potentially hazardous failure modes that are ...



[Outdoor Power Equipment Market Size & Share ...](#)

Outdoor Power Equipment Market Summary The global outdoor power equipment market size was estimated at USD 53.42 billion in 2024 and is projected to ...



[Extension Cords Business Guidance . CPSC.gov](#)

The Commission refers to cords intended for indoor use only as "indoor cords" and to cords intended for both indoor and outdoor use as "outdoor cords."

Contact Us

For catalog requests, pricing, or partnerships, please visit:
<https://www.bringmethehorizon.eu>