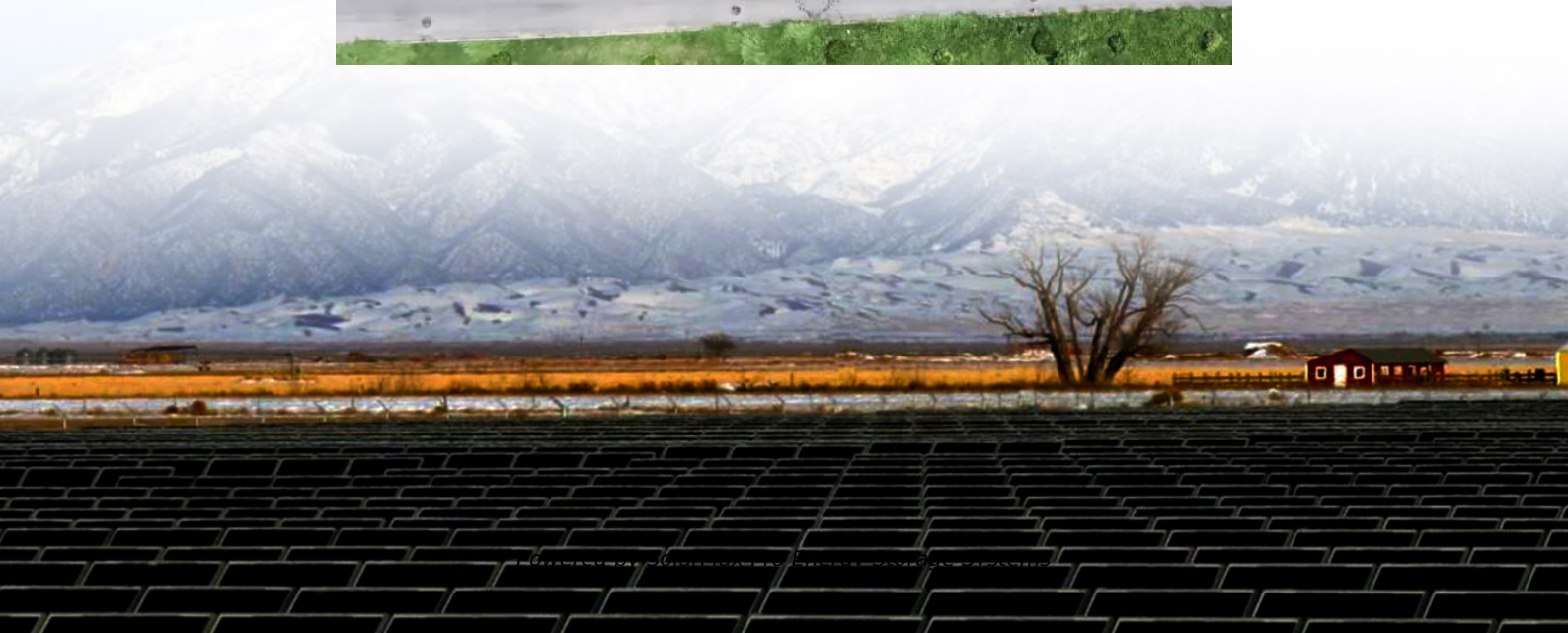




SolarMax Pro Energy Storage Systems

Is it okay to install photovoltaic panels on the roof ridge





Overview

Often firefighters will ascend to the ridge of a roof to cut a hole and vent the smoke. Doing so provides a way for the smoke to exit a room and allow for a rescue operation. It takes enough bravery to scale the roof of a burning home, and putting solar panels in the way just increases the danger.

Rules for Rooftop Solar PV now has a solid footing in the residential market, and the building codes have caught up—here's what you need to know. Paths for fire and rescue. Placing PV panels on residential roofs is a balancing act between getting the.

Another thorn in the side of effective solar-panel arrangement on roofs is all the other stuff up there—namely, plumbing vents. The drain, waste, and vent (DWV) system in a house is pretty.

Though firefighting practices differ from district to district, the concept of venting and controlling the smoke and heat of a structure fire is universal. Fighting fire requires managing.

Windows used for emergency escape—often colloquially referred to as “egress windows” but described in the code as “emergency escape and rescue openings” (EEROs).

Should solar panels be installed away from the roof edge?

Installing away from the roof edge reduces wind loading on the panels and makes them less likely to be damaged or even torn off in a storm. I looked at five different manufacturers of solar roof mounting systems and was able to find Australian installation guidelines for four of them.

Can solar panels be mounted on a roof?

Mounting solar panels on a roof surface to create a solar power system is known as rooftop solar mounting. Solar panels can't be put on a roof without first having mounting brackets installed.

Can solar panels be installed on an inadequate roof?



Without proper assessment, installing solar panels on an inadequate roof could lead to structural damage or even collapse, posing significant safety risks. Solar panel maintenance and lifecycle are important aspects of owning a solar energy system.

Can solar panels be installed on rafters or trusses?

Whether your roof is constructed with rafters or engineered trusses, both can be good fits for solar panels. Both rafters and trusses provide significant structural integrity for a solar panel installation, and most solar companies have significant experience installing on both types of roof supports.

What factors should you consider when installing roof-mounted solar panels?

One of the most important factors when installing roof-mounted solar panels is the condition and structure of the roof. It's vital that a roof be able to not only hold up the weight of the solar panels, but also withstand any wind loads that could pull on the roofing.

Are rafters a good fit for solar panels?

Both rafters and trusses provide significant structural integrity for a solar panel installation, and most solar companies have significant experience installing on both types of roof supports. To determine if your roof is a good fit for solar panels, it's best to contact your local solar company.



Is it okay to install photovoltaic panels on the roof ridge



Pros and Cons of Solar Panels on Roof

When deciding to install solar panels, one must weigh both the advantages and potential drawbacks. While the promise of lower energy bills and a reduced carbon footprint is ...

CHAPTER 4 RS PHOTOVOLTAIC SYSTEMS

User notes: About this chapter: Chapter 4 is specific to photovoltaic solar systems and equipment. Solar thermal systems are not addressed in this chapter. This chapter covers solar modules ...



Providing Access to Roofs with a PV System , NFPA

There are a number of things to consider when installing a PV system on the roof of a building, but perhaps the most popular topic for questions has to do with the required ...



Engineered Trusses vs. Rafters When Installing Solar

Both rafters and engineered trusses can provide adequate structure for solar panel installation.

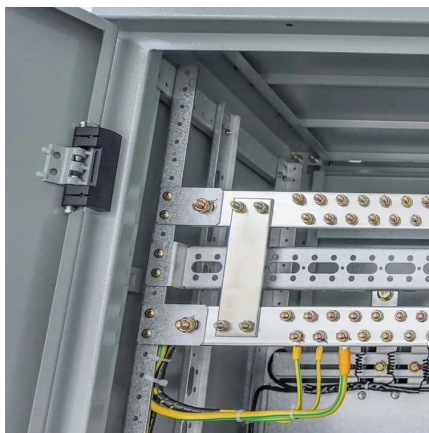


However, each has its pros and cons. And ...



[How To Mount Solar Panels To The Roof: Complete ...](#)

Learn how to safely mount solar panels to your roof with our step-by-step guide. Covers all roof types, tools needed, safety tips, and when to ...



Rules for Rooftop Solar

Often firefighters will ascend to the ridge of a roof to cut a hole and vent the smoke. Doing so provides a way for the smoke to exit a room and allow for a rescue operation. It takes enough ...



[2015 International Solar Energy Provisions \(ISEP\)](#)

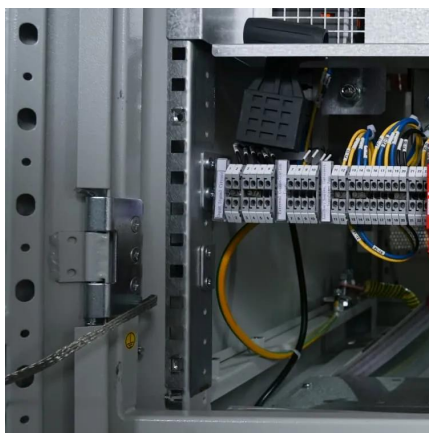
The roof photovoltaic live load in areas covered by solar photovoltaic panels or modules shall be in addition to the panel loading unless the area covered by each solar photovoltaic panel or ...





[The Complete Guide To Rooftop Solar Mounting \[2025\]](#)

Discover everything you need to know about rooftop solar mounting with our complete guide. From installation to maintenance, we've got you covered.

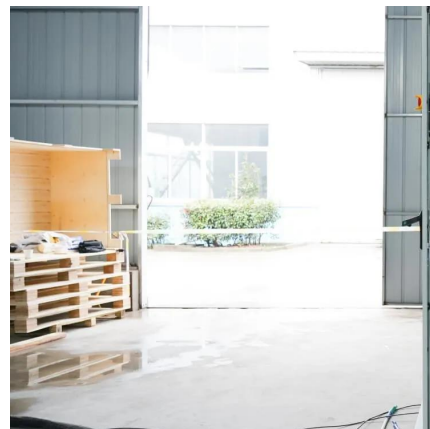


How To Mount Solar Panels To The Roof: Complete 2025 Guide

Learn how to safely mount solar panels to your roof with our step-by-step guide. Covers all roof types, tools needed, safety tips, and when to hire professionals.

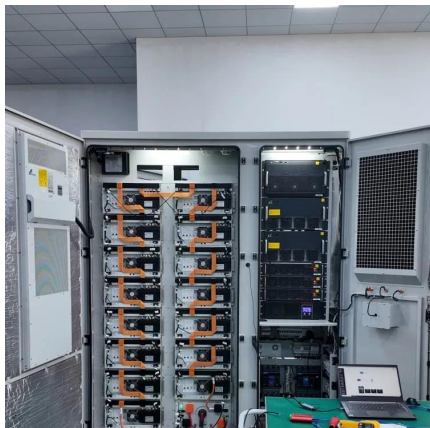
[Solar Panel Building Regulations & Planning ...](#)

Solar panel building regulations Solar panel installations have to pass standard building regulations for the property - it's a legal requirement for many home ...



[How to Install Solar Panels on Your RV Without Drilling](#)

When mounting solar panels to your RV roof without drilling, you first need to consider which type of solar panel to use. Solar panels for RV use ...



Hanging Panels Over the Roof Edge?

I'm having trouble finding panels that are "just right". They're either too small, leaving roof space and power on the table, or too big but with nice power numbers. I have a ...



[How close can solar panels be to the edge of the ...](#)

In most cases, solar panels are required to have a minimum of 18 inches of recoil from the roof ridge and may also require a three-foot path ...

Mounting Solar Panels: A Complete Beginner's Guide to Installation

What is Solar Panel Mounting and Racking?
Mounting solar panels refers to the process of installing solar energy systems onto a structure such as a building or ground ...



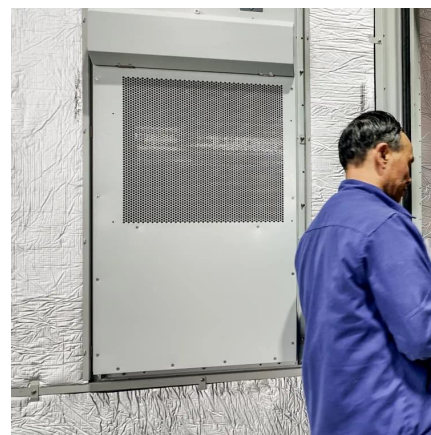


[Is it Safe to Have Solar Panels on Your Roof?](#)

Proper rooftop solar installation by certified photovoltaic (PV) specialists is critical to mitigating risks associated with structural issues and electrical hazards. Improper ...

[Is it Safe to Have Solar Panels on Your Roof?](#)

Proper rooftop solar installation by certified photovoltaic (PV) specialists is critical to mitigating risks associated with structural issues and ...



[9 Problems With Solar Panels On Roofs And How To ...](#)

Issues such as leaks, broken tiles, and structural damage can occur if the panels are not installed properly. To avoid roof damage, working ...

[How close to the edge of your roof can your solar ...](#)

Installing away from the roof edge reduces wind loading on the panels and makes them less likely to be damaged or even torn off in a storm. I ...



[Rooftop Solar Panels: The Ultimate Buying Guide](#)

What are Rooftop Solar Panels? Solar panels on a roof collect sunlight and transform it into electricity using photovoltaic cells. Rooftop solar ...



Panels mounted past ridge of roof , DIY Solar Power Forum

So I'm getting ready to install panels onto my sheds asphalt shingles and as I'm up there doing my calculations I've noticed my neighbours bambo and ADU shade more then I ...



[How Solar is Installed on Metal Roofs](#)

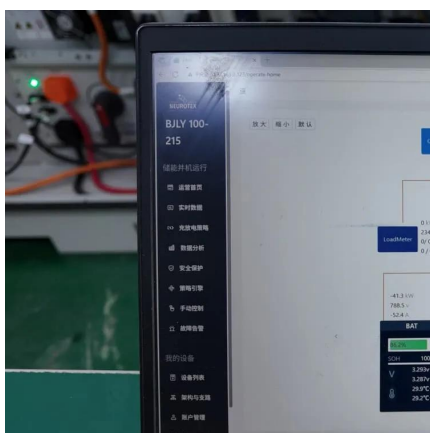
Installing solar on standing seam metal roofs If you're lucky enough to have a metal standing seam roof, there are solar panel mounting systems available which clamp onto the seams. In ...





Is It Safe to Install Photovoltaic Panels on Your Roof? A Practical

But before you jump on the solar bandwagon, let's address the elephant on the roof. Modern photovoltaic systems are generally safe when installed properly, but like any home ...



Engineered Trusses vs. Rafters When Installing Solar

Both rafters and engineered trusses can provide adequate structure for solar panel installation. However, each has its pros and cons. And depending on where you live, local ...

Solar Panel Roof Requirements For Installation (2023 Guide)

Wondering what the roof requirements are to get solar panels? Check out our official 2022 guide for solar panel roof requirements!



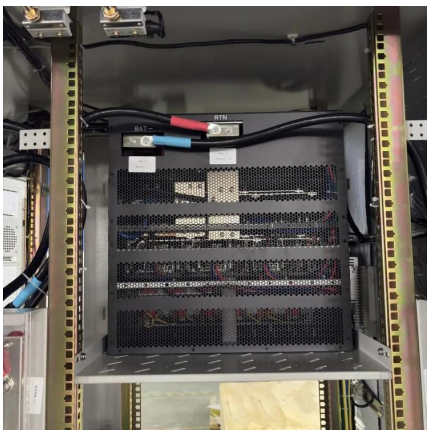
Hanging Panels Over the Roof Edge?

I'm having trouble finding panels that are "just right". They're either too small, leaving roof space and power on the table, or too big but with nice ...



How close to the edge of your roof can your solar panels go?

Installing away from the roof edge reduces wind loading on the panels and makes them less likely to be damaged or even torn off in a storm. I looked at five different ...



[The Complete Guide To Rooftop Solar Mounting ...](#)

Discover everything you need to know about rooftop solar mounting with our complete guide. From installation to maintenance, we've got ...

Contact Us

For catalog requests, pricing, or partnerships, please visit:
<https://www.bringmethehorizon.eu>