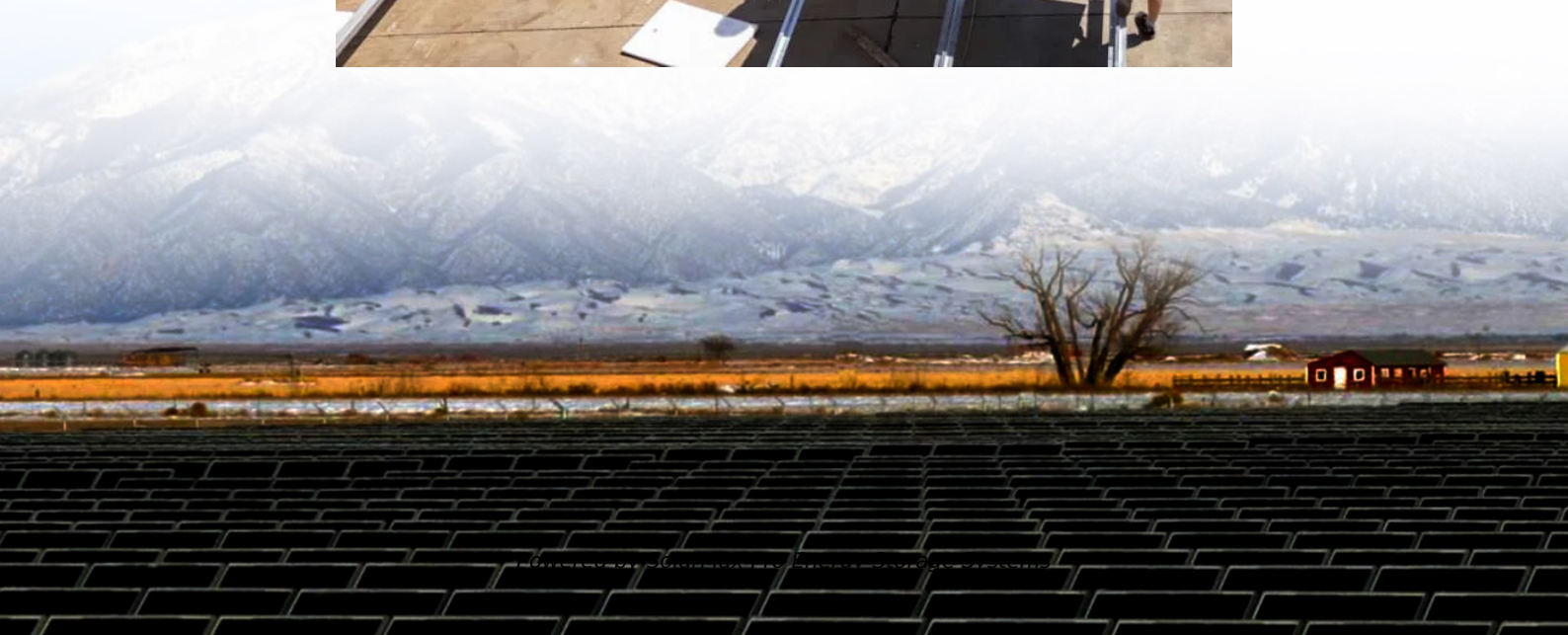




SolarMax Pro Energy Storage Systems

Installation of power station power generation





Overview

An electric power system or electric grid is known as a large network of power generating plants which connected to the consumer loads. As, it is well known that “Energy cannot be created nor be destroyed but can only be converted from one form of energy to another form of energy”. Electrical energy is a form of.

The place where electric power produced by the parallel connected three phase alternators/generators is called Generating Station (i.e. power plant). The ordinary power plant capacity and generating voltage may be 11kV, 11.5 kV, 12kV or 13kV. But.

The electric supply (in 132kV, 220 kV, 500kV or greater) is transmitted to load center by three phase three wire (3 Phase - 3 Wires also known as Delta connection) overhead transmission system. As the voltage level which is generated is around (11-20) kV and the.

At a sub station, the level of secondary transmission voltage (132kV, 66 or 33 kV) reduced to 11kV by step down transforms. Generally, electric supply is provided to those heavy load consumer (commercial power supply for industries) where the demands is 11 kV.

Area far from the city (outskirts) which have connected with receiving stations by lines is called secondary transmission. At receiving station, the level of voltage reduced by step.



Installation of power station power generation



[PLANNING A POWER PLANT GENERATION PROJECT FROM ...](#)

I would want to share my practical experience and detailed knowledge on "Planning a Power Generation Project from Start to Finish" through a free technical presentation and ...

New Best Practices for Power Project Planning and Construction

To learn what new tools and techniques construction firms are using to deliver successful projects, POWER reached out to half a dozen companies. Two, Kiewit and Fluor, ...



[How to Install a Complete Micro Hydro Alternative ...](#)

This article provides a comprehensive guide on the installation of a 300W off-grid micro hydro system for residential use. The system is designed to utilize a ...

[Executing the Complete Power Generation Project](#)

This article examines the most important issues of this process, with a particular focus on the



most popular installations in the U.S., combined-cycle power generation plants.



[Understanding Industrial Power Stations: A Complete ...](#)

Industrial power stations are crucial for electricity generation in industries, providing consistent and reliable power. Power stations are evolving with the ...

[New Best Practices for Power Project Planning and ...](#)

To learn what new tools and techniques construction firms are using to deliver successful projects, POWER reached out to half a dozen ...



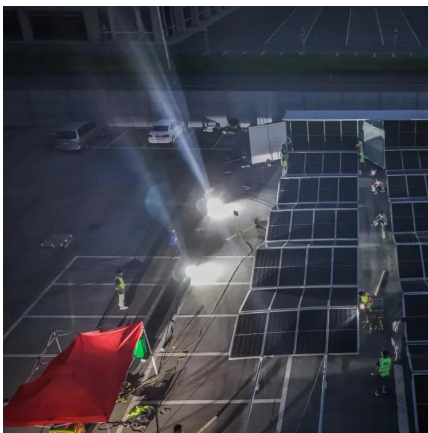
[10 MW Solar Power Plant Cost, Area & Setup Guide](#)

Thinking of installing a 10 MW solar power plant? Synergy Solar, a leading installer, explains the cost, land needed, subsidy, ROI, and full setup process.



Solar Power Plant Construction and Working: A Comprehensive ...

Before the solar power plant is operational, it undergoes testing and commissioning. This involves verifying that all systems are functioning correctly, safety ...



UNIT I Introduction

A generating station which utilizes the potential energy of water at a high level for the generation of electrical energy is known as a hydro-electric power station.

POWER PLANT DESIGN MANUAL

Reliability. Plant reliability standards will be equivalent to a 1-day generation forced outage in 10 years with equipment quality and redundancy selected during plant design to conform to this ...



PROJECT:

The simple formula for this is: $\text{Net Power} = \text{Gross Power} \times \text{Efficiency}$ While some power losses are inevitable as water power gets converted to electricity, they can be minimized with good ...



[Electrical design of the on-site generation system](#)

This guide covers installation design of the generator and related electrical systems, their interface with the facility, and topics regarding load and generator protection.



[Power Plant Generators: What It Is? How Does It Work?](#)

Discover how power plant generators produce electricity. Learn their working principles, key components, and role in energy generation. Read ...

[Power Plant Engineering and Construction](#)

We help clients determine the optimal site, size, materials, construction methods and design features to meet their needs for power plants and renewable energy facilities, and we ...





Power Station Construction

Power station construction refers to the process of designing and building facilities for generating electrical power, encompassing various types such as oil-fired, coal-fired, and nuclear power ...

UNIT-1 THERMAL POWER STATIONS Introduction

Steam power plants may be installed either to generate electrical energy only or generate electrical energy along with generation of steam for industrial purposes such as in paper mills, ...



Generator Installation at the Owen Springs Power ...

Generator Installation at the Owen Springs Power Station, Installing three 10.9 megawatt diesel gas generators and alternator sets at The Owen Springs ...



Electric Power System

Those electric power lines which connect generating station (power station) or sub station to distributors are called feeders. Remember that current in feeders (in each point) is constant ...



An Introduction to Electrical Generators for Power Plants

This type system will be used for steam turbine or diesel generating plants with all station service supplied by two station service transformers with no isolation between auxiliaries for different ...



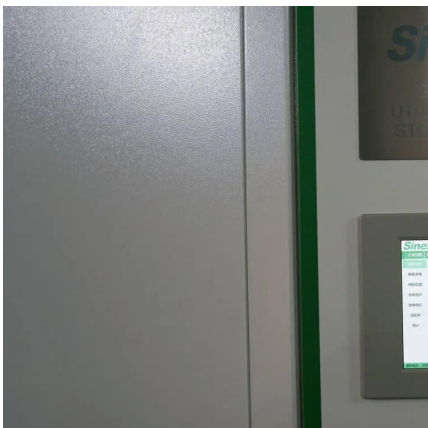
[Generator Installation Process & Timeline Guide](#)

Understanding these steps can help you plan ahead, avoid delays, and ensure your generator operates efficiently when you need it most. Below, we break down the entire generator ...



[Electrical design of the on-site generation system](#)

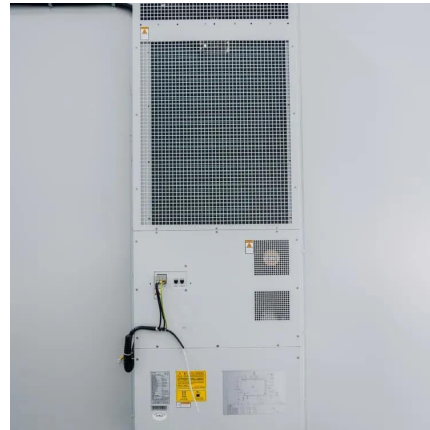
This guide covers installation design of the generator and related electrical systems, their interface with the facility, and topics regarding load ...





Introduction to Diesel-Electric Generating Plants

Protective relays constantly monitor the power system to assure maximum continuity of the generation and distribution system and to minimize the damage to life and property.



Contact Us

For catalog requests, pricing, or partnerships, please visit:
<https://www.bringmethehorizon.eu>