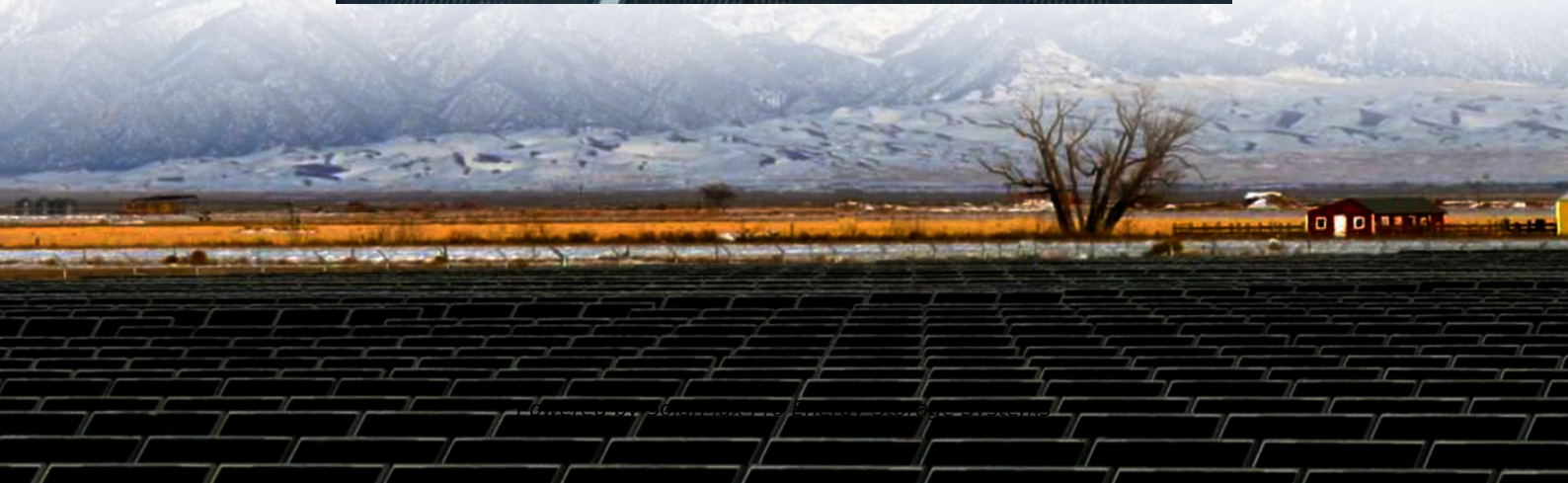
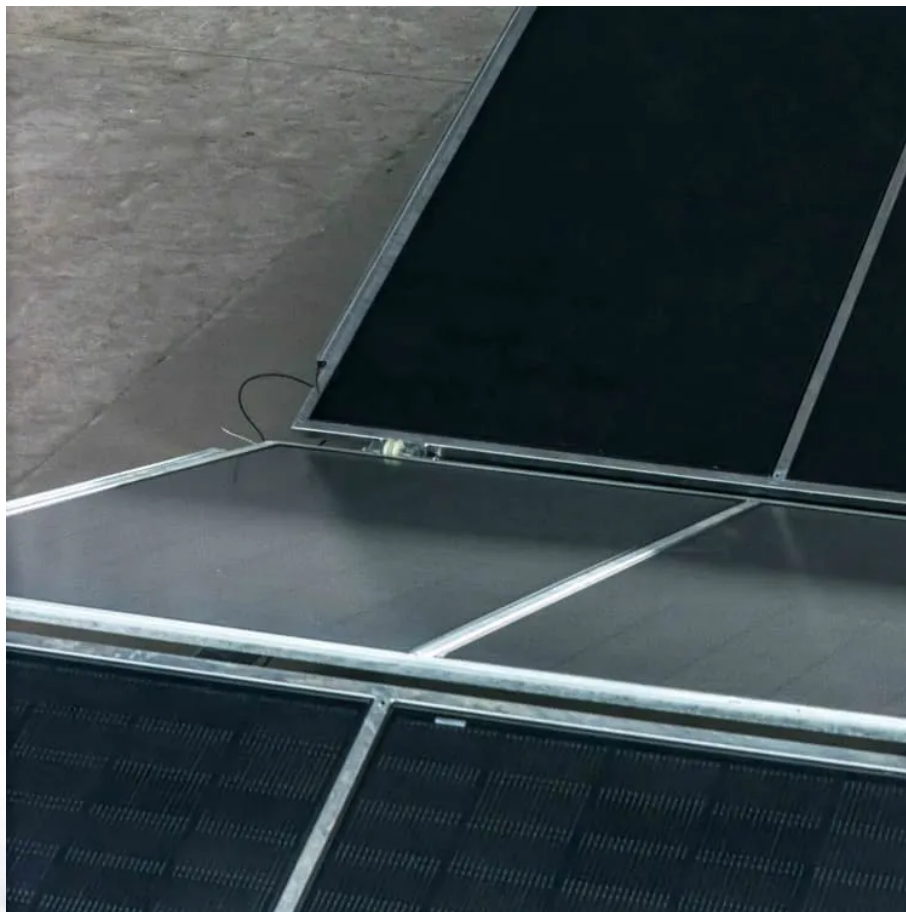




**SolarMax Pro Energy Storage Systems**

# **Installation of power distribution box of communication base station**





## Overview

---

How do you design a power distribution system?

Proper design and layout are essential for efficient power distribution and management. Consider the following aspects: a. Physical Space: Assess the available space for equipment installation, ensuring it meets safety requirements and allows for easy access, maintenance, and cable management. b.

Do base stations need a power supply?

Power Requirements: Base stations operate on 120V AC power rather than 12V DC, requiring either built-in power supplies or separate AC-to-DC converters. Size and Ergonomics: Designed for desktop use, these radios feature full-size controls, making operation more comfortable during extended sessions.

How do I install a distribution module?

Distribution Module: Mount in an appropriate location. (Telco or network wiring closet preferred) If 4 ports, use all 4 pair from the provided cable. Blue, Orange, Green, Brown If an outside phone line is required, on the first card beginning from left, locate the port labeled "T,D, 1-2,3-4" that has the white dot under the "T".

How much does a base station CB cost?

HOA and Zoning: Check local regulations and homeowner association rules before installing visible antennas. How much does a complete base station CB setup cost?

Basic setups start around \$300-500, including radio, antenna, coax, and power supply. Mid-range systems run \$500-1000, while premium installations can exceed \$2000.

Can a SSB antenna be used as a base station?



Yes, with a proper 12V DC power supply (3-5 amps minimum) and base antenna system. However, dedicated base stations typically offer better features, ergonomics, and performance for home use. Typical range is 15-25 miles for local communications. With SSB and optimal conditions, 50+ mile contacts are possible.

What is a 3G base station converter?

In a 3G Base Station application, two converters are used to provide the +27V distribution bus voltage during normal conditions and power outages.



## Installation of power distribution box of communication base station

---

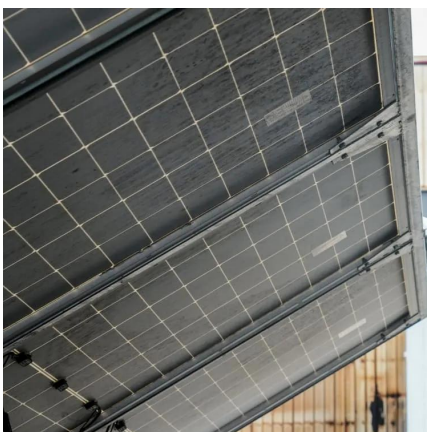


### Telecom Base Station Power System Solution

In order to ensure the continuity and efficiency of communication services, the power system of telecommunications base stations needs to have high reliability, stability and high efficiency to ...

### **Ensemble Communications LMDS Base Station Transceiver : ...**

Use the provided #10 screw to route the -48 VDC power and return conductors to the Power Distribution Frame (PDF) on the power and ground barrier strip for each conductor.



### Rath Communications Base Station 16 Zone

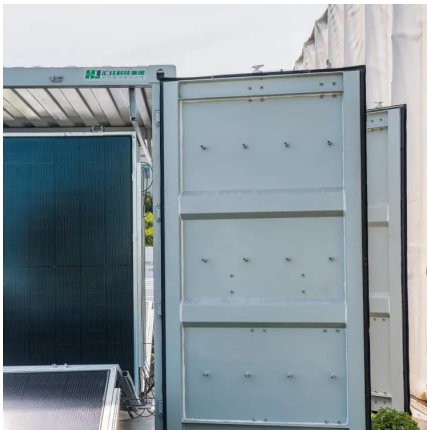
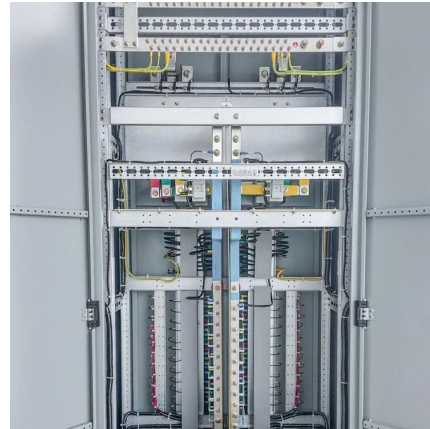
Our Rath Communications 1 - 10 Call Box Area of Refuge System supports 5 and 10 zone base stations to provide coverage for your facility. These systems ...

### Rath Communications Base Station 92 Zone

Our Rath Communications 1 - 10 Call Box Area of Refuge System supports 5 and 10 zone base



stations to provide coverage for your facility.  
These systems consist of remote call boxes, a ...



### Section 273000: Area of Refuge/Elevator Landing

3.7 The IP Command Center must provide an audible and visual indicator that an IP Call Box has been activated. 3.8 The 120vac Power Supply (RATH® part # RP7700104) must be capable of ...

## **How to Set Up a Base Station CB System: A Complete Installation ...**

This guide will walk you through the basic understanding of Base Station CB System, how to install them and how to do that right



### DBS5900 Distributed Base Stations -- Huawei Enterprise

The distributed architecture is adopted to separate the RF unit part of the base station from the baseband unit part, connecting the two parts through optical fiber, which minimizes the feeder ...







## Ensemble Communications LMDS Base Station Transceiver : Install ...

Use the provided #10 screw to route the -48 VDC power and return conductors to the Power Distribution Frame (PDF) on the power and ground barrier strip for each conductor.



## [Communications System Power Supply Designs](#)

Voice-over-Internet-Protocol (VoIP), Digital Subscriber Line (DSL), and Third-generation (3G) base stations all necessitate varying degrees of complexity in power supply design. We ...

## Installation Instructions for the Powerhouse Power Pedestal ...

See the attached dimensional drawing of the base of the Powerhouse. Suggested locations for the power supply as well as water, phone and cable TV utilities are identified. We ...



## [HUAWEI DBS3900 Dual-Mode Base Station Hardware ...](#)

DBS3900 Dual-Mode Base Station is the fourth generation base station developed by Huawei. It features a multi-mode modular design and supports three working modes: GSM mode, ...



### RATH® Analog AOR Systems Installation

The Base Station phone has the date and time displayed on the screen. After powering on the system, if the correct information is displayed, proceed in programming the endpoints.



### Rath Communications Base Station 56 Zone

Wireless Nurse Call, Nurse Call Systems, Patient Wander Management Rath Communications Base Station 56 Zone - Surface Mount [2500-56XRC] - Rath Communications Base Station 56 ...

### 2500 Series IP Command Center and Distribution ...

The system includes Base Stations & Distribution Modules, with Power Supply and battery backup sold separately, providing a complete and robust solution ...





### Section 273000: Area of Refuge/Elevator Landing

Section 273000: Area of Refuge/Elevator Landing  
- Two-Way Communication System o IP  
Command Center (Base Station & Distribution  
Module), Call Boxes, and Signage

## **Installation & Operations Manual**

Using the provided power cord, plug the 3-pin female connector side into power input next to the power switch on the Distribution Module. Plug the male 3-prong side of the power cable into ...



### Process of Installing a Base Transceiver Station (BTS)

Installing a Base Transceiver Station (BTS) is a critical step in building mobile communication networks. Here's a step-by-step guide to the process:



### 3900 Series Base Station Product Description

In a distributed installation scenario, RRUs can be installed close to the antenna system to reduce feeder loss and improve base station performance. Table 2-1 Typical ...





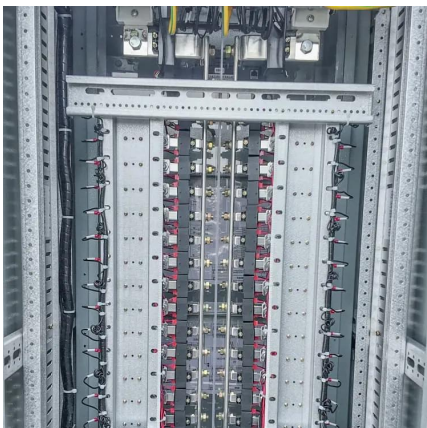
## Process of Installing a Base Transceiver Station (BTS) ...

Installing a Base Transceiver Station (BTS) is a critical step in building mobile communication networks. Here's a step-by-step guide to the ...



## How to Install a -48V Telecom Power System: A Step-by-Step ...

Learn how to install a -48V telecom power system step-by-step. This guide covers equipment selection, design considerations, wiring, and essential maintenance tips for reliable ...



## [Rath Base Station SmartRescue 10, SS Surface ...](#)

Our Rath Communications 1 - 10 Call Box Area of Refuge System supports 5 and 10 zone base stations to provide coverage for your facility. These systems ...



## [Mitel IP-DECT Base Station Installation Guide](#)

This document describes how to install the Base Station. The document is intended for service technicians. For information on how to operate the device, see the applicable Installation and ...



## **Requirements And Specifications For Installation Of Distribution ...**

The metal box of the distribution box, the electrical installation board, and the metal base and casing of the electrical appliances in the box must be grounded. The protective ...

## **ITU-T Rec. K.112 (12/2015) Lightning protection, earthing ...**

Summary Recommendation ITU-T K.112 provides a set of practical procedures related to the lightning protection, earthing and bonding of a radio base station (RBS). It considers two types ...



## [Distribution Box Guide: Types, Components & Solutions](#)

The distribution box (DB box) helps safely and efficiently distribute electrical power. Today, electrical systems are essential for homes and ...



## Installation & Operations Manual

Installation Steps Mount the Distribution Module and power supply with battery backup in an appropriate location (a network closet or machine room is recommended). Plug the power ...



## Contact Us

---

For catalog requests, pricing, or partnerships, please visit:  
<https://www.bringmethehorizon.eu>