



**SolarMax Pro Energy Storage Systems**

## **Install a communication base station and wind power on the upper floor**





## Overview

---

Can a SSB antenna be used as a base station?

Yes, with a proper 12V DC power supply (3-5 amps minimum) and base antenna system. However, dedicated base stations typically offer better features, ergonomics, and performance for home use. Typical range is 15-25 miles for local communications. With SSB and optimal conditions, 50+ mile contacts are possible.

Do base stations need a power supply?

Power Requirements: Base stations operate on 120V AC power rather than 12V DC, requiring either built-in power supplies or separate AC-to-DC converters. Size and Ergonomics: Designed for desktop use, these radios feature full-size controls, making operation more comfortable during extended sessions.

Where should a DC power system be located?

DC power systems should also logically be located close to this ground point. Though this uses up some wall and floor space, it permits the systematic growth of communications equipment outward. Though not usually required for building foundations, some sites with unique soil conditions may require soil boring tests.

What is a communications enclosure & ancillary system?

An enclosure that houses communications equipment and ancillary systems only, designed such that equipment contained within can be accessed without the need for personnel to enter the cabinet. An enclosure is typically pre-wired and its equipment is pre-installed. Example: (See Figure 3-2 and Figure 3-4.) An unmanned, weather-tight enclosure.

How do I manage wire under raised computer floors?

For wire management under raised computer floors, a welded wire mesh cable



tray system is recommended. This type of tray system can be mounted to, or suspended from, raised floor pedestals or sub flooring. This tray system typically consists of high strength steel wire in the form of a 50 x 100 mm (2 x 4 in.) mesh.

How is the AC power Raceway supported?

The AC power raceway may be supported by a trapeze arrangement with the cable tray attached to the top of the trapeze and the AC power raceway attached to the bottom of the trapeze. The trapeze arrangement is supported from the ceiling and/or sidewalls.



## Install a communication base station and wind power on the upper

---



### Research on ventilation cooling system of communication base stations

To meet the design requirements of the green base stations [21], [22] and reduce operation cost of base station, this paper focuses on the effects of building structural design ...

### Smart BaseStation

It provides a complete solar-wind hybrid power solution, with the option of an autostart backup generator, or methanol fuel cell. Most of the time, our standard models will meet your ...



### Installation and commissioning of energy storage for ...

The communication base station backup power supply has a huge demand for energy storage batteries, which is in line with the characteristics of large-scale use of the battery by the ladder, ...

### Antenna for communication base station convenient to installation

The utility model provides an antenna for communication base station convenient to





installation. Antenna for communication base station convenient to installation includes: the antenna ...



## Floor boxes provide unique access , Cabling Installation

Bringing the necessary power, voice, data, and video cables to the workstation can be done many ways depending on a building`s design and the customer`s needs and ...



## Wireless Telecom Base Site Solutions , Hybrid Power

We offer telecom site solutions that utilize hybrid energy sources for uninterruptible power supply, easy deployment and management, remote ...



## How to Set Up a Base Station CB System: A Complete Installation ...

Setting up a base station CB system opens a world of communication possibilities far beyond what mobile installations offer. With careful planning, quality components, and ...



## [Do you know how to install communication equipment](#)

This video will show you some of the details of setting up your communications equipment. Base station RRU upper tower installation. #RRU #Communication #Base\_

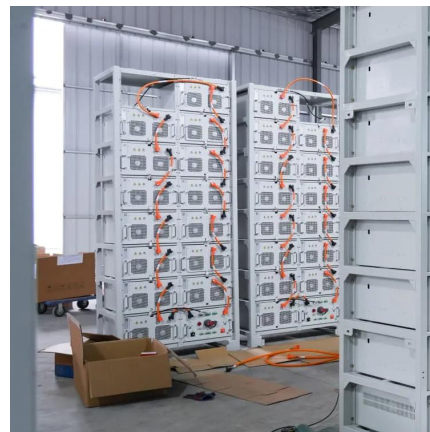


## [Solar telecommunications base station](#)

For base station load smaller than 2kW, it is a suitable power supply system scheme in remote areas, especially under the trend of high global crude oil ...

## [Rooftop Base Stations & Structure , Murphy Tower](#)

Murphy Tower Service specializes in challenging rooftop installations of wireless communications infrastructure including base station shelters and custom ...



## [Wireless Telecom Base Site Solutions , Hybrid Power](#)

We offer telecom site solutions that utilize hybrid energy sources for uninterrupted power supply, easy deployment and management, remote operation and maintenance, and adaptability to a ...



### Outdoor mobile communication base station

The invention relates to an outdoor mobile communication base station, which comprises a base, a communication unit and a supporting unit, wherein the communication unit is arranged at the ...



### Rooftop Base Stations & Structure . Murphy Tower

Murphy Tower Service specializes in challenging rooftop installations of wireless communications infrastructure including base station shelters and custom support structures.

### ToR document for the implementation of AIS Shore ...

AIS Shore Station, including base stations, base station controllers, antennas, connectivity equipment, and accessories. VTMIS application software along with the host IT infrastructure. ...



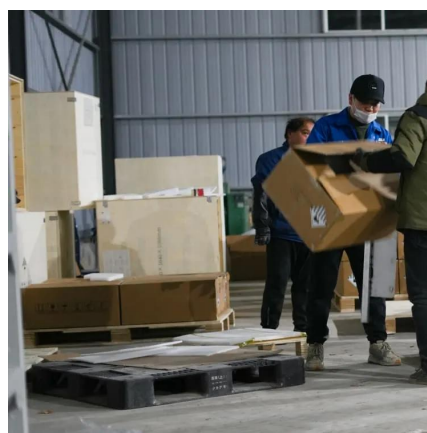


## How to make wind solar hybrid systems for telecom stations?

Wind solar hybrid systems can fully ensure power supply stability for remote telecom stations. Meet the growing demand for communication services.

### Gateway and Base Station Installation Guide

Installing a Gateway or Base Station y or Base Station requires the same steps. The only difference is for a gateway using the antenna mounted to the enclosure



### COMMUNICATION SITE BUILDING DESIGN AND ...

This chapter provides requirements and recommendations for designing communications site buildings, including equipment shelters and outdoor cabinets. The following topics are ...

### Lifting communication base station iron tower

A communication base station and iron tower technology, which is applied in the field of communication and construction machinery, can solve the problems of high-altitude ...





### **ICTRFN4177A Install radio communications base station ...**

They combine technical radio communications skills with organisational and administrative skills to install radio communications base station equipment in a range of commercial and ...



### **Outdoor Communication Energy Base Station - Reliable Power ...**

Discover our Outdoor Communication Energy Base Station, designed for off-grid and grid-connected applications. Supports solar, wind, and generator power inputs with advanced ...



### **[Outdoor Communication Energy Cabinet With Wind Turbine](#)**

Highjoule HJ-SG-D03 series outdoor communication energy cabinet is designed for remote communication base stations and industrial sites to meet the energy and communication ...





## Communications Cabinet Solutions Outdoor ...

The standardized cabinet solution of BETE communication outdoor base station is a brand-new site installation scheme and product. It inherits the ...



## Contact Us

---

For catalog requests, pricing, or partnerships, please visit:  
<https://www.bringmethehorizon.eu>