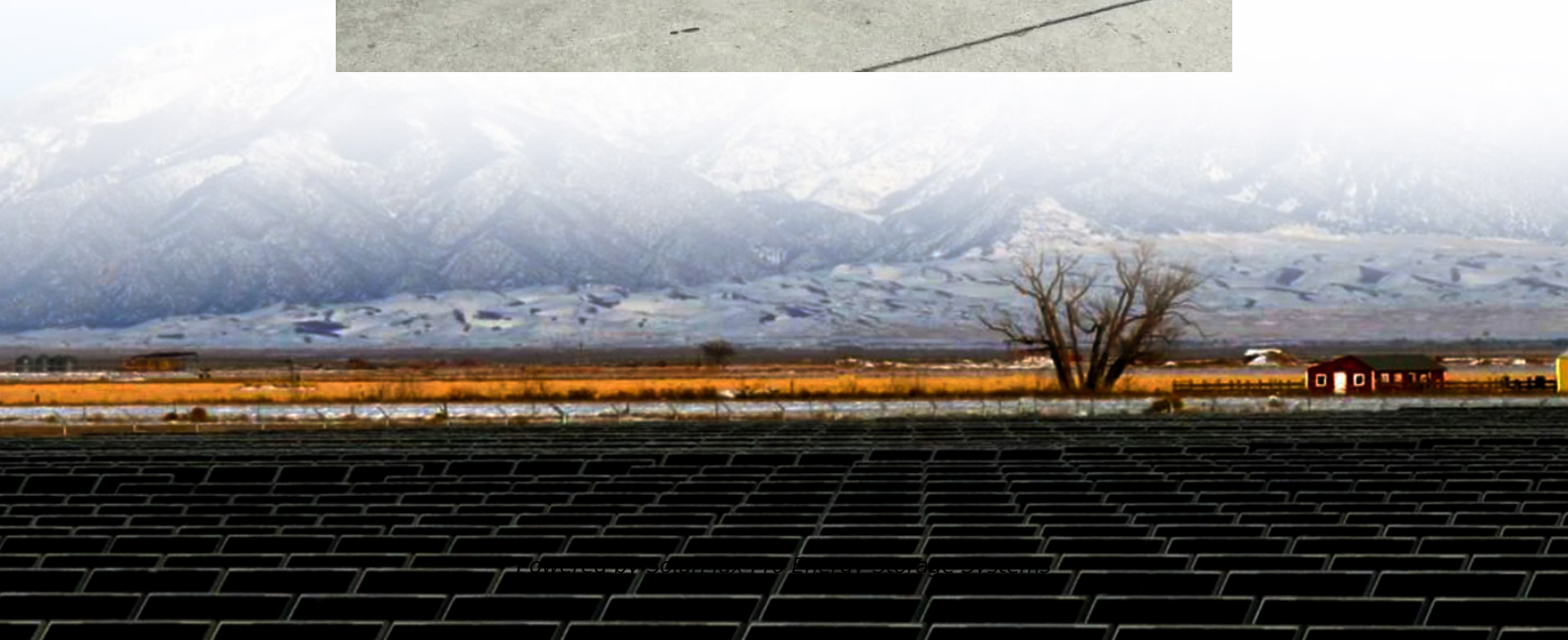




**SolarMax Pro Energy Storage Systems**

## **How wide is a typical solar panel**





## Overview

---

Most residential solar panels measure between 65 to 75 inches long and 39 to 41 inches wide, delivering power outputs ranging from 250 to 400 watts per panel.



## How wide is a typical solar panel

---



### [How Big Are Solar Panels? Here's Their Typical Size ...](#)

Individual solar panels come in a lot of different shapes and sizes, but generally speaking, they're about 3 feet by 5 feet, or about 15 square feet per panel, ...

### **How Big Are Solar Panels? Here's Their Typical Size and Weight**

Here's a guide to understanding the size and weight of solar panels, and what that means for your energy system. How big are solar panels? Individual solar panels come in a lot of different ...



### [What Is the Average Size of a Solar Panel? Quick Guide](#)

Most standard residential panels are around 65 inches by 39 inches and pump out 350-400 watts. You'll also find beefier commercial panels that go wider and crank out up to ...

### [Average dimensions of photovoltaic panels](#)

What number of solar cells make up a solar panel? Solar panels are typically built with either



60 or 72 solar cells, these are the two most common configurations. Photovoltaic ...

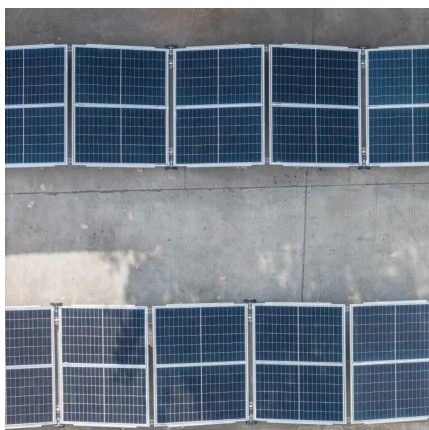


## We Analyzed 100 Solar Panels: Dimensions, Efficiency, & Load

Solar panel width generally varies between 39.0 inches and 51.3 inches. A common width range of 39.1 to 41.5 inches encompasses many models across different wattages. Wider panels, ...

## [Solar Panel Size Guide \(with 4 Charts\)](#)

Most residential solar panels measure between 65 to 75 inches long and 39 to 41 inches wide, delivering power outputs ranging from 250 to 400 watts per panel.



## [Standard Solar Panel Sizes, and Dimensions \(2025\)](#)

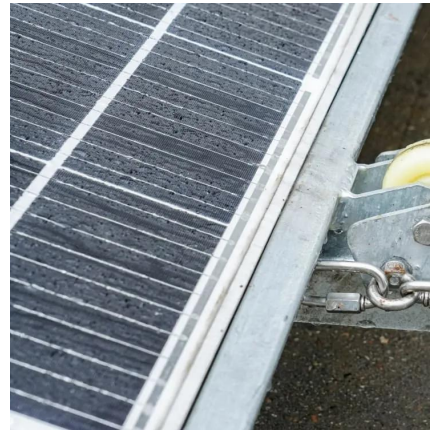
The average domestic solar panel outputs 250-400 watts, has physical dimensions around 1.7m in length and 1m in width, and weighs 18 ...





## [Standard Solar Panel Sizes And Wattages \(100W-500W ...](#)

If you have a 1000 sq ft roof, and you can use 75% of that roof area for solar panels, you can theoretically put 45 300-watt solar panels on a 1000 sq ft roof. A typical 400-watt solar panel is ...



## **Perfect Solar Panel Sizes for Your Home (Expert Sizing Guide)**

Most residential solar panels measure between 65 to 75 inches long and 39 to 41 inches wide, delivering power outputs ranging from 250 to 400 watts per panel.

## [Solar panel size and weight: everything you need to ...](#)

Learn everything about solar system size, solar panel dimensions, and how much solar panels weigh in this complete guide for residential ...



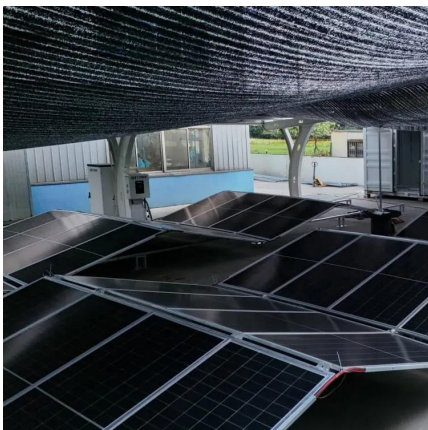
## [Solar Panel Size and Weight: How Big Are Solar Panels?](#)

Solar panels generate clean energy and significant savings, but they aren't a one-size-fits-all solution. The size and weight of solar panels vary ...



## Complete Guide to Solar Panel Size

An average solar panel system requires between 15 to 19 solar panels and takes up 260 to 340 square feet of space. Solar panel efficiency, output, a good warranty, and a trusted brand are ...

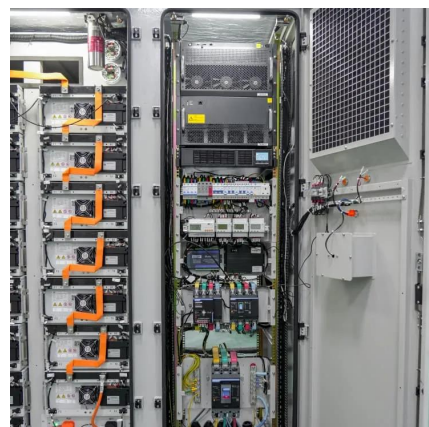


### [Solar Panel Size & Weight Guide \[+ Charts\] - Solartap](#)

Standard residential solar panels measure 66 inches by 40 inches, or a little over 5 feet long and 3 feet wide. Each panel therefore takes up around 18 square feet. Commercial ...

### [Standard Solar Panel Sizes And Wattages \(100W ...\)](#)

If you have a 1000 sq ft roof, and you can use 75% of that roof area for solar panels, you can theoretically put 45 300-watt solar panels on a 1000 sq ft roof. ...



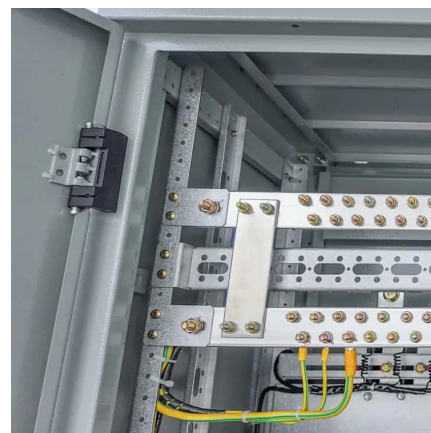


### [How wide is the solar panel? , NenPower](#)

1. The width of solar panels typically ranges from 65 to 78 inches, depending on the model and manufacturer.
2. Most standard residential solar ...

### [Solar Panel Size & Weight Guide \[+ Charts\] - Solartap](#)

Standard residential solar panels measure 66 inches by 40 inches, or a little over 5 feet long and 3 feet wide. Each panel therefore takes up ...



### [How Big is a Solar Panel? The Solar Panel Size Guide](#)

For a residential solar panel, size is fairly consistent across manufacturers: 65 inches (1.65 meters) by 39 inches (1 meter) is the average solar panel size that you find on the roofs of ...

### [Understanding Solar Panel Dimensions In 2025: A ...](#)

Understanding solar panel dimensions is crucial for planning your solar system installation, maximizing efficiency, and ensuring compatibility ...



## Understanding Solar Panel Dimensions In 2025: A Complete Size ...

Understanding solar panel dimensions is crucial for planning your solar system installation, maximizing efficiency, and ensuring compatibility with your available space. In this ...



## We Analyzed 100 Solar Panels: Dimensions, ...

Solar panel width generally varies between 39.0 inches and 51.3 inches. A common width range of 39.1 to 41.5 inches encompasses many models ...



## Standard Solar Panel Sizes, and Dimensions (2025)

The average domestic solar panel outputs 250-400 watts, has physical dimensions around 1.7m in length and 1m in width, and weighs 18-20kg. Proper sizing is crucial for ...







## [Standard Solar Panel Sizes, and Dimensions \(2025\)](#)

Solar panels come in different sizes and power capacities to suit various needs. Residential vs. Commercial Solar Panel Sizes A standard ...



## [Solar Panel Dimensions and Weight: A Complete ...](#)

Residential solar panel dimensions can vary slightly from brand to brand, but this guide can help you understand the basics and choose the best ...

## [Solar Panel Dimensions: Sizes and What You Need to Know](#)

Solar Panel Dimensions: Sizes and What You Need to Know. Learn about standard panel sizes, efficiency, and how to choose the right fit for your home.



## [How much area is needed for solar panel installation](#)

A typical home solar panel is about 3 feet wide by 5.5 feet long, occupying an area of roughly 17.5 square feet (sq ft). On average, the amount ...



## Solar Panel Sizes and Weights

A typical solar panel size is about 1 metre wide and can be 1.6 m to 2 m long, while the thickness usually ranges between 3 to 4 cm. Typical solar panel weight ranges from 19 kg ...



## How Big Are Solar Panels? Here's Their Typical Size and Weight

Individual solar panels come in a lot of different shapes and sizes, but generally speaking, they're about 3 feet by 5 feet, or about 15 square feet per panel, according to Pamela Frank, vice

## Contact Us

For catalog requests, pricing, or partnerships, please visit:  
<https://www.bringmethehorizon.eu>