



SolarMax Pro Energy Storage Systems

How to check the battery connection of the communication base station





Overview

How does an entry sensor communicate with a base station?

The entry sensor communicates with the base station using a specific radio frequency. This frequency determines the range at which the sensor can effectively communicate with the base station. Understanding the frequency and range is essential for optimizing the placement of your sensors throughout your home.

What if a base station doesn't turn on?

If the base station is plugged into a working outlet (and the power cable isn't damaged) but still isn't turning on, try restarting the base station. To do that, Turn over the base station and unscrew the battery cover using a screwdriver. Remove the batteries from the base station and wait a minute or two before reinserting them.

What should I do if my entry sensor battery is low?

Ensure that the entry sensor has sufficient battery power to operate effectively during the test. Low battery levels can affect the sensor's responsiveness and may lead to inaccurate test results. If the battery is low, replace it with a fresh one before proceeding with the test. 3. Secure Base Station Connectivity.

Why is my base station not charging?

Your base station cable is damaged. A less likely but still possible reason is that the base station's charging cable is damaged. Check for any breakage, cuts, or burns in the cable. If your cable looks damaged, this may be the reason the batteries aren't charging. The batteries are bad.

Why is my SimpliSafe base station not charging?

If you are having issues charging your SimpliSafe Base Station's batteries, below are a few possible causes: You may be using the wrong type of



batteries. SimpliSafe Base Stations use Nickel Metal Hydride (NiMH) rechargeable batteries, hence why the base stations can be recharged. If you use the wrong batteries, your base station might not charge.

Why can't I connect my base station to a WiFi network?

If you try to connect your base station to a WiFi network that doesn't meet the requirements above, you will be unable to do so. If your WiFi network meets the requirements mentioned above but you still can't connect to your base station, check to ensure you have input the correct password.



How to check the battery connection of the communication base sta



HICAPS TERMINAL COMMUNICATIONS

Communication on the terminal The strength of the Bluetooth® and Wi-Fi connectivity on your terminal will depend on several factors but can be affected by physical obstructions, other ...

Simulation and Classification of Mobile Communication Base Station

In recent years, with the rapid deployment of fifth-generation base stations, mobile communication signals are becoming more and more complex. How to identify and classify those signals is a ...



[How to Test SimpliSafe Entry Sensor? Your Complete ...](#)

Before jumping to conclusions, double-check the sensor's battery level, position, and connectivity to the base station. Troubleshooting the potential causes of ...

untitled []

The best way to utilize the multitasking feature is to first test a battery using the system test and the associated battery test cable that comes



from the top of the controller (See Chapter 7 for ...



Communication base station battery maintenance equipment

Use a multimeter to check the voltage of the battery pack and the float voltage of a single battery. In actual use, there are two problems. First, the measurement data of the ...



Optimization of Communication Base Station Battery ...

In the communication power supply field, base station interruptions may occur due to sudden natural disasters or unstable power supplies. This work studies the optimization of ...



OPTIMIZATION OF COMMUNICATION BASE STATION BATTERY

There are several methods: constant current discharge, constant power discharge, constant resistance discharge that can be used to perform a capacity test, but the most common ...





[18 SimpliSafe Base Station Known Problems \(Solved\)](#)

To ensure that your base station connects to the SimpliSafe App, check out which of the above issues your device is having. 1. Start by ensuring the base station is connected to ...



The business model of 5G base station energy storage ...

In terms of 5G base station energy storage system, the literature [1] constructed a new digital 'mesh' power train using high switching speed power semiconductors to transform the ...

[Optimization of Communication Base Station Battery ...](#)

In the communication power supply field, base station interruptions may occur due to sudden natural disasters or unstable power supplies. This ...



[Air Force Tactical Communication Flashcards , Quizlet](#)

After the multiband radio, complete its initial self - test and you have checked the indicators on the LCD screen, what are you ready to do?



Selection and maintenance of battery for communication base station

Focused on the engineering applications of batteries in the communication stations, this paper introduces the selections, installations and maintenances of batteries for communication ...



Telecom Base Station Battery

In the modern world, uninterrupted communication is critical. Our Telecom Base Station Battery Solutions are designed to provide reliable power support for ...

[i7 and clean base communication problem SOLVED!! : r/roomba](#)

Hello, I have owned the Roomba i7+ (including self-emptying base) for a full year, and loved it at first. However, I started having the same problem I've seen others report: vacuum will go out, ...





18 SimpliSafe Base Station Known Problems (Solved) ...

To ensure that your base station connects to the SimpliSafe App, check out which of the above issues your device is having. 1. Start by ...

Types and Applications of Mobile Communication ...

Mobile communication base station is a form of radio station, which refers to a radio transceiver station that transmits information between mobile ...



Understanding BMS Communication Protocols: RS485, RS232, ...

Learn about BMS communication protocols: RS485, RS232, & CAN. Understand their differences, advantages, and uses in battery management systems.

Troubleshooting

Check the Device Information panel on the device page and make sure the battery power is not too low. There needs to be at least 3.5 volts for logging to continue and 3.9 volts for cellular ...



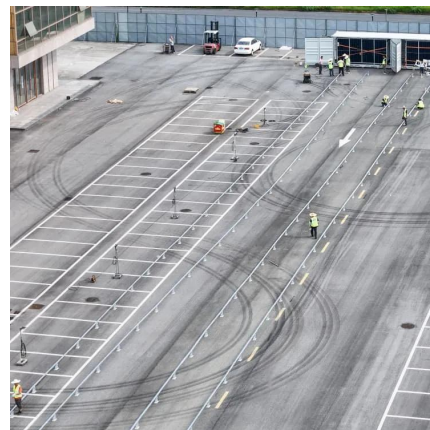
Selection and maintenance of battery for communication base ...

Focused on the engineering applications of batteries in the communication stations, this paper introduces the selections, installations and maintenances of batteries for communication ...



?MANLY Battery?Lithium batteries for communication base ...

In general, as the demand for 5G communication base stations continues to increase, there will be considerable market space for lithium battery energy storage in the ...



Troubleshooting Satellite Connection Issues on iPhone 17

How to troubleshoot satellite connection issues on iPhone 17 To troubleshoot satellite connection issues on the iPhone 17, which supports Apple's iOS 18 or later with satellite messaging ...





[How to Test SimpliSafe Entry Sensor?](#) [Your Complete ...](#)

Before jumping to conclusions, double-check the sensor's battery level, position, and connectivity to the base station. Troubleshooting the potential causes of the null response is essential for ...



Contact Us

For catalog requests, pricing, or partnerships, please visit:
<https://www.bringmethehorizon.eu>