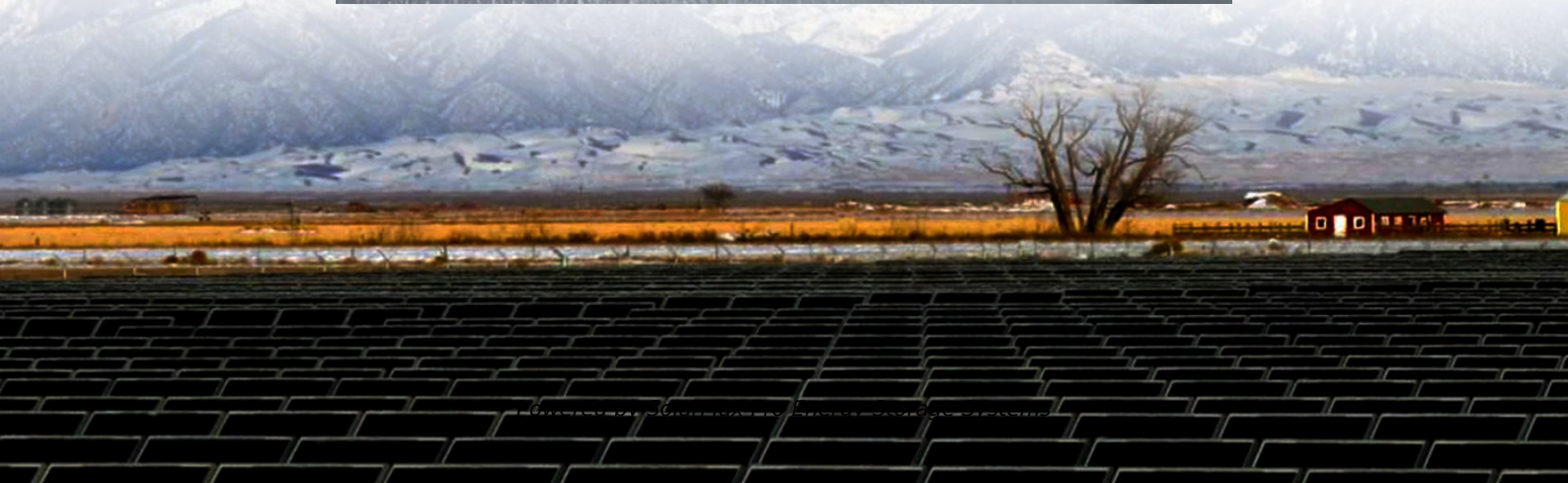




SolarMax Pro Energy Storage Systems

How often should the battery of a communication base station be replaced





Overview

What makes a telecom battery pack compatible with a base station?

Compatibility and Installation Voltage Compatibility: 48V is the standard voltage for telecom base stations, so the battery pack's output voltage must align with base station equipment requirements. **Modular Design:** A modular structure simplifies installation, maintenance, and scalability.

Which battery is best for telecom base station backup power?

Among various battery technologies, Lithium Iron Phosphate (LiFePO₄) batteries stand out as the ideal choice for telecom base station backup power due to their high safety, long lifespan, and excellent thermal stability.

Why do data centers use Telecom batteries?

In data centers, telecom batteries provide backup power to servers and networking equipment. They ensure data integrity and availability during power outages. Cellular networks rely on telecom batteries to maintain service continuity.

Why are Telecom batteries important?

Telecom batteries are crucial in emergency power systems, providing immediate backup when the main power supply fails. This is vital for maintaining communication during disasters or emergencies. **3. Key Features of Telecom Batteries** The capacity of telecom batteries is measured in amp-hours (Ah), indicating how much energy they can store.

How do you protect a telecom base station?

Backup power systems in telecom base stations often operate for extended periods, making thermal management critical. Key suggestions include: **Cooling System:** Install fans or heat sinks inside the battery pack to ensure efficient heat dissipation.



Why is backup power important in a 5G base station?

With the rapid expansion of 5G networks and the continuous upgrade of global communication infrastructure, the reliability and stability of telecom base stations have become critical. As the core nodes of communication networks, the performance of a base station's backup power system directly impacts network continuity and service quality.



How often should the battery of a communication base station be replaced?



How Often Should Batteries in Cell Towers Be Replaced?

Cell tower batteries typically require replacement every 3-5 years. Lead-acid batteries dominate the market but require frequent maintenance, while lithium-ion alternatives ...

UPS Batteries in Telecom Base Stations - leagend

When designing a UPS battery system for a telecom base station, engineers must address several critical factors to ensure reliability, efficiency, ...

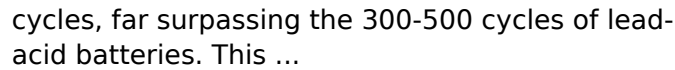


Telecom Base Station Backup Power Solution: Design ...

Long Cycle Life LiFePO4 batteries can achieve over 2,000 cycles, and in some cases up to 5,000 cycles, far surpassing the 300-500 cycles of ...

Telecom Base Station Backup Power Solution: Design Guide for ...

Long Cycle Life LiFePO4 batteries can achieve over 2,000 cycles, and in some cases up to 5,000



Once these batteries are installed and put into operation in a communication base station, they will not be replaced within a few years. Therefore, it is of great significance to ...

Abstract: Battery is a basic way of power supply for communications base stations. Focused on the engineering applications of batteries in the communication stations, this paper introduces ...



Telecom base stations require reliable backup power to ensure uninterrupted communication services. Selecting the right backup battery is ...



[Choosing the Optimal Channels for Base Stations: A ...](#)

In the world of wireless communication, the choice of channels for base stations plays a critical role in ensuring reliable service, minimizing interference, and optimizing ...



[Communication Base Station Energy Solutions](#)

Reducing Energy Costs Remote base stations often rely on independent power systems. Fuel generators are unsuitable for long-term use without on-site ...

[Securing Backup Power for Telecom Base Stations - ...](#)

One of the most critical components of any telecom base station is its backup power system. This article will explore in detail how to secure ...



[When to Replace Your Portable Power Station: A ...](#)

A portable power station is an invaluable tool for outdoor adventures, emergency backup power, or off-grid living. However, like any electronic device, it has a limited lifespan ...



[How Often Should Batteries in Cell Towers Be Replaced?](#)

Modern towers use redundant battery strings allowing live replacements. Critical sites employ temporary mobile generators during major upgrades, maintaining FCC-mandated ...



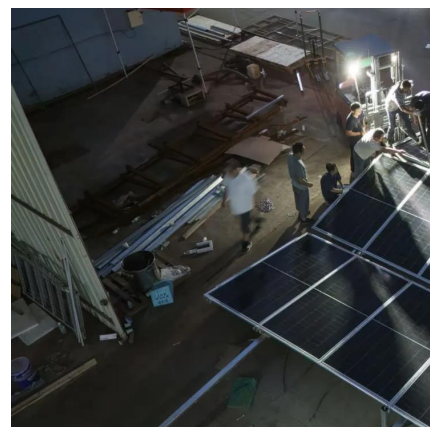
[Use of Batteries in the Telecommunications Industry](#)

Large telecom offices and cell sites with dedicated generators have 3 to 4 hours of battery reserve time. A large telecom office may have over 400 cells and 8000 gallons of electrolyte.



[Comprehensive Guide to Telecom Batteries](#)

This comprehensive guide will delve into the types of telecom batteries, their applications, maintenance tips, and the latest advancements in battery technology.





UPS Batteries in Telecom Base Stations - leagend

When designing a UPS battery system for a telecom base station, engineers must address several critical factors to ensure reliability, efficiency, and longevity. The first step in ...

Optimization of Communication Base Station Battery ...

In the communication power supply field, base station interruptions may occur due to sudden natural disasters or unstable power supplies. This ...



Understanding Backup Battery Requirements for Telecom Base Stations

Telecom base stations require reliable backup power to ensure uninterrupted communication services. Selecting the right backup battery is crucial for network stability and ...

Discussion on the maintenance of battery packs in communication base

Even the battery capacity of some base stations is only 10% of the nominal capacity. The deterioration and failure of individual batteries will lead to the rapid failure of the entire battery ...



Selection and maintenance of batteries for communication base stations

Focused on the engineering applications of batteries in the communication stations, this paper introduces the selections, installations and maintenances of batteries for communication ...



How often should I replace a telecom battery?

If the battery is used in a high-temperature environment or experiences frequent deep discharges, it may need to be replaced every 3 years. For batteries that are operated ...



Air Force Tactical Communication Flashcards , Quizlet

Study with Quizlet and memorize flashcards containing terms like What position does the function Knob needs to be placed in, before connecting the battery?, ...





I have a panasonic kx-tg4500 phone setup. the base station ...

Customer: i have a panasonic kx-tg4500 phone setup. the base station indicates low battery and chirps regularly. i replaced the battery but the problem persists.the manual does not seem to ...



Discussion on the maintenance of battery packs in ...

Even the battery capacity of some base stations is only 10% of the nominal capacity. The deterioration and failure of individual batteries will lead to the rapid failure of the entire battery ...

Microsoft PowerPoint

Cell splitting: allows an orderly growth of the system. (increases the number of base stations in order to increase capacity) Sectoring: uses directional antennas to further control the ...



Selection and maintenance of batteries for communication base ...

Focused on the engineering applications of batteries in the communication stations, this paper introduces the selections, installations and maintenances of batteries for communication ...



How Often Should Forklift Battery Cells Be Replaced?

Industrial operations rely heavily on forklift efficiency, and at the heart of this productivity lies battery performance. Understanding battery maintenance, replacement cycles, ...



Optimization of Communication Base Station Battery ...

In the communication power supply field, base station interruptions may occur due to sudden natural disasters or unstable power supplies. This work studies the optimization of ...

base station

A communication base station is a necessity that transmits and receives mobile communication waves, but it generates enormous electromagnetic waves, so civil complaints ...





Contact Us

For catalog requests, pricing, or partnerships, please visit:
<https://www.bringmethehorizon.eu>