



SolarMax Pro Energy Storage Systems

How much power does a 5G base station consume in South America





Overview

How much power does a 5G station use?

The power consumption of a single 5G station is 2.5 to 3.5 times higher than that of a single 4G station. The main factor behind this increase in 5G power consumption is the high power usage of the active antenna unit (AAU). Under a full workload, a single station uses nearly 3700W.

Why does 5G use more power than 4G?

The data here all comes from operators on the front lines, and we can draw the following valuable conclusions: The power consumption of a single 5G station is 2.5 to 3.5 times higher than that of a single 4G station. The main factor behind this increase in 5G power consumption is the high power usage of the active antenna unit (AAU).

What is a 5G base station?

A 5G base station is mainly composed of the baseband unit (BBU) and the AAU — in 4G terms, the AAU is the remote radio unit (RRU) plus antenna. The role of the BBU is to handle baseband digital signal processing, while the AAU converts the baseband digital signal into an analog signal, and then modulates it into a high-frequency radio signal.

How much energy will telecommunications consume by 2025?

When base stations, data centers and devices are added together, telecommunications will consume more than 20% of the world's electricity by 2025, says Huawei analyst Dr. Anders Andrae. Currently, it is about 11% (8). Numerous reports (9) describe the exponentially increasing energy consumption of 5G and Internet of Things applications.

Why is low 5G energy consumption important?

With new devices and use cases increasing the capacity of the networks, the demand to ensure low 5G energy consumption is critical to minimizing



operator expenses and ensuring they can still meet energy reduction goals. How can NR bring an answer?

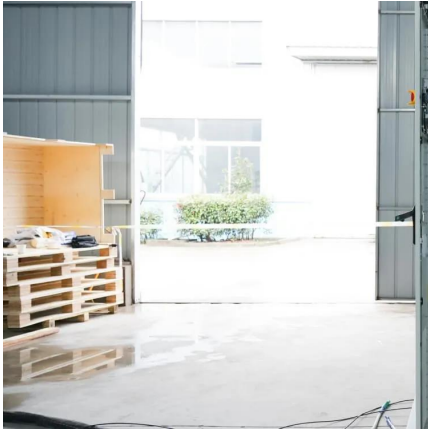
Figure 1: Global mobile data traffic outlook [Ericsson Mobility Report, June 2019].

Does 5G New Radio save energy?

Emerging use cases and devices demand higher capacity from today's mobile networks, leading to increasingly dense network deployments. In this post, we explore the energy saving features of 5G New Radio and how this enables operators to build denser networks, meet performance demands and maintain low 5G energy consumption.



How much power does a 5G base station consume in South America



5G Mid-Band Spectrum

54 times more power. As a consequence, the coverage area of a CBRS base station is much smaller than that of a full-power cell. To fully overlay a high-power cell's coverage area with ...

5G Energy Efficiency Overview

Base station resources are generally unused 75 - 90% of the time, even in highly loaded networks. 5G can make better use of power-saving techniques in the base station part, ...



[The 5G Dilemma: More Base Stations. More ...](#)

A lurking threat behind the promise of 5G delivering up to 1,000 times as much data as today's networks is that 5G could also consume up to ...

5G Power: Creating a green grid that slashes costs, emissions & energy use

In a site with multiple frequencies, maximum



power consumption for the whole mobile tower will exceed 10 kW. At 10 or more frequency bands, site power consumption surpasses 20 kW. And ...

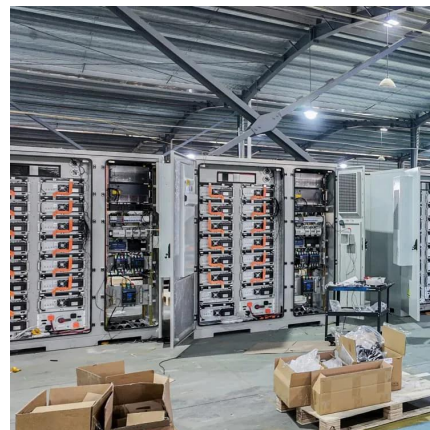


How much energy will 5G consume?

5G networks have larger antennas, larger bandwidths, and higher base station density. This means up to x3 more energy consumption. How can the industry expect x20 ...

base station in 5g

A 5G base station, also known as a gNodeB (gNB), is a critical component of a 5G network infrastructure. It plays a central role in enabling wireless communication between user ...



A technical look at 5G energy consumption and performance

5G Base Station Power Consumption: With each base station carrying at least 5X more traffic and operating over more frequency bands, 5G base station power consumption is at least twice ...



5G 'inherently more energy consuming' than 4G

5G is "inherently more energy-consuming" than 4G due to the stringent power requirements of Massive MIMO deployments, according to a ...



5G base stations consume so much power that operators are ...

Night sleep can be understood as a flexible adjustment to reduce power consumption and save power. Tower told News that the current average power consumption of a single tenant of a ...

How much does 5g base station energy storage cost

5G Base Station Power Consumption: With each base station carrying at least 5X more traffic and operating over more frequency bands, 5G base station power consumption is at least twice ...



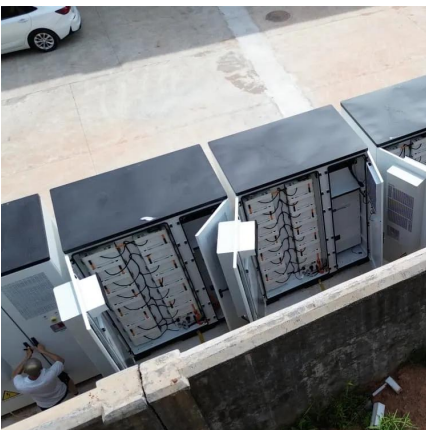
Front Line Data Study about 5G Power Consumption

The power consumption of a single 5G station is 2.5 to 3.5 times higher than that of a single 4G station. The main factor behind this increase in 5G power consumption is the high power ...



How much power does 5G consume?

One 5G base station is estimated to consume about as much power as 73 households (6), and 3x as much as the previous generation of base stations (5), (7). When base stations, data centers ...



Why does 5g base station consume so much power ...

In addition to other small modules that use electricity, the power consumption of a single 5G base station is generally around 3700 watts, ...

5G Power: Creating a green grid that slashes costs, ...

In a site with multiple frequencies, maximum power consumption for the whole mobile tower will exceed 10 kW. At 10 or more frequency bands, site power ...





Does 5G require electricity?

One 5G base station is estimated to consume about as much power as 73 households (6), and 3x as much as the previous generation of base stations (5),(7). Takedown request , View ...

How much power does a 5G base station consume? It is rumored ...

The high power consumption of 5G base stations is also one of the reasons why 5G communication is difficult to spread widely. There are even rumors that 5G will be shut down ...



Power consumption based on 5G communication

At present, 5G mobile traffic base stations in energy consumption accounted for 60% ~ 80%, compared with 4G energy consumption increased three times. In the future, high-density ...

What is the Power Consumption of a 5G Base Station?

Ericsson has been able to innovate a 5G base station that consumes only 20% energy when the traffic is low compared to a normal setup. This achieves through advanced ...



Why does 5g base station consume so much power and how to ...

In addition to other small modules that use electricity, the power consumption of a single 5G base station is generally around 3700 watts, which is about three times that of 4G ...



The power supply design considerations for 5G base ...

An integrated architecture reduces power consumption, which MTN Consulting estimates currently is about 5% to 6 % of opex. This percentage ...



How Much Power Does a 5G Base Station Consume? - Smart Solar

On average, a 5G base station consumes between 1,000 to 3,000 watts. This is significantly higher than 4G base stations, which typically consume 500 to 1,500 watts.



How Much Power Does 5G Base Station Consume? , Huijue ...

Have you ever wondered how much energy our hyper-connected world is consuming? 5G base stations, the backbone of next-gen connectivity, now draw 3-4 times more power than their 4G ...

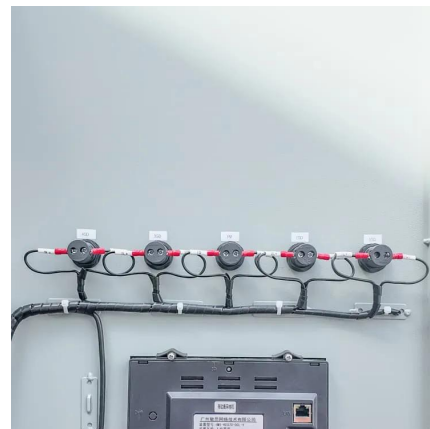


A technical look at 5G energy consumption and performance

To understand this, we need to look closer at the base station power consumption characteristics (Figure 3). The model shows that there is significant energy consumption in the ...

Chifukwa chiyani 5g base station imadya mphamvu zambiri ...

Chifukwa chiyani base station imawononga magetsi? Zotsatirazi zikupereka zotsatira za kuyesa kutsogolo kwa akatswiri, ndikugwiritsa ntchito mphamvu kwa Huawei ndi ...



Contact Us

For catalog requests, pricing, or partnerships, please visit:
<https://www.bringmethehorizon.eu>