



SolarMax Pro Energy Storage Systems

How much energy does the inverter store





Overview

While inverters are crucial in transforming electrical power, they do not store energy. Instead, their primary role is to manage the flow of power from a source, like a battery or solar panel, to an end-use device. How much power does an inverter need?

Usually, the minimum power required for an inverter is nearly 8 to 10% higher than the appliances it is powering. Additionally, the inverters have a tendency to draw power from batteries even when not in use or turned off, and that depends mostly on the features and the design of the inverter.

What is inverter efficiency?

In simple terms, inverter efficiency refers to how well an inverter converts DC electricity into usable AC power. No inverter is 100% efficient—some energy always gets lost as heat during the conversion. Most modern inverters have efficiency ratings between 90% and 98%. Let's break it down:.

Do inverters increase energy costs?

An inverter converts direct current (DC) from sources such as batteries or solar panels into alternating current (AC). Its primary function is to store power, and there is a common misconception that inverters increase energy costs. So, does inverter increase electricity bill?

.

What is an inverter & how does it work?

An inverter is an electronic appliance that powers your household during power outages. It stores electricity in its batteries and requires charging for efficient functioning. However, its main purpose is to convert DC power to AC, which is then transmitted to the domestic or commercial sectors.

Is an inverter 100% efficient?



No inverter is 100% efficient—some energy always gets lost as heat during the conversion. Most modern inverters have efficiency ratings between 90% and 98%. Let's break it down: If you feed 1000 watts of DC power into your inverter and it outputs 950 watts of AC power, your inverter efficiency is 95%.

How does the inverter energy calculator work?

Energy is calculated in joules, based on the power consumption (in watts) and duration of usage (in minutes). This calculation helps homeowners, solar energy users, electricians, and technicians better understand energy needs and optimize battery and power configurations. Using the Inverter Energy Calculator is very simple.



How much energy does the inverter store

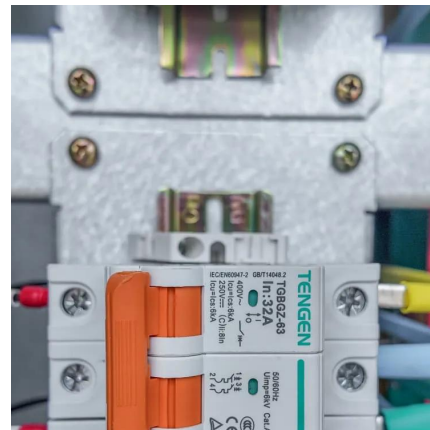


[How Much Power Does a Solar Inverter Use: An ...](#)

The amount of power a solar inverter uses depends on its efficiency rating, size, and whether it's operating or in standby mode - a ...

[kW vs kWh in solar & battery storage , Solar Choice](#)

Example using a ~2.5kW solar system:
Instantaneous power output vs cumulative energy production over a two-day period. Peak power ...



How Much Power Does Solar Inverter Use and How to Create the ...

Learn how much power a solar inverter uses and get practical tips on designing the ideal solar power project. From understanding inverter efficiency to system sizing, this ...

[Everything You Need to Know About Inverters: Types ...](#)

Ever wonder why inverters vary so much in price? Or why some can power a whole house



quietly, while others can't even handle a fridge?
...



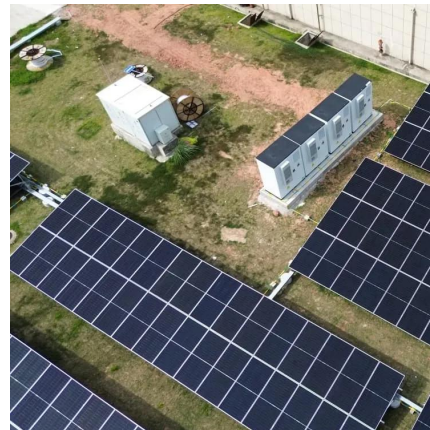
How much energy storage inverter stores , NenPower

Energy storage inverters can store energy equivalent to multiple kilowatt-hours, ranging from 1,000 to 10,000 watts depending on the inverter capacity and battery compatibility.



What is a Solar Panel System and How Does It Work?

1 day ago· Batteries (optional) - These store extra energy so you can use it later, like at night or during power cuts. Charge controller - This manages the flow of electricity to protect batteries ...



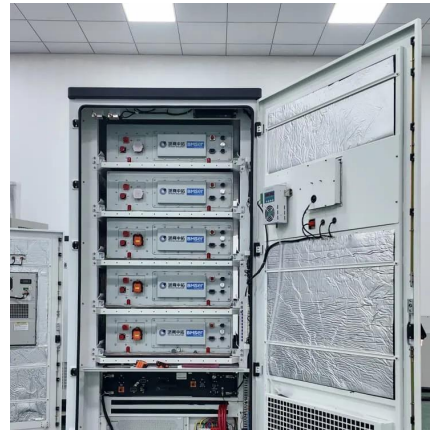
Understanding Refrigerator Power Consumption: How Much Energy Does ...

How Much Power Does a Refrigerator Pull? The power consumption of a refrigerator varies widely based on several factors, including its size, type, age, and energy ...



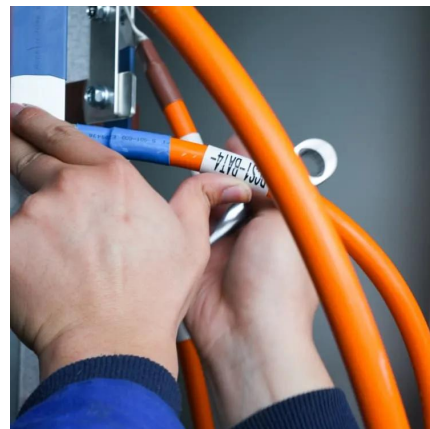
Inverter Energy Calculator

Our Inverter Energy Calculator helps you easily calculate the total energy usage of your inverter based on simple input values. Whether you are planning solar backup, tracking energy bills, or ...



How 3-Phase AC Coupled Hybrid Inverters Improve Energy ...

This lets users use solar power in different ways. How does it differ from traditional inverters? Traditional inverters just send power to the grid or appliances. But, hybrid inverters ...



[Do Inverters Store Power? - leaptrend](#)

While inverters are crucial in transforming electrical power, they do not store energy. Instead, their primary role is to manage the flow of power from a source, like a battery ...

[Do Inverters Store Power? - leaptrend](#)

While inverters are crucial in transforming electrical power, they do not store energy. Instead, their primary role is to manage the flow of power ...



How much energy can the energy storage inverter store?

Power ratings are typically expressed in kilowatts (kW) and signify the maximum output energy the inverter can provide at any given moment, ...



Inverter Power Draw: How Much Power Does an Inverter Use ...

According to the U.S. Department of Energy, modern inverters can have efficiency ratings between 80% to 95%. This means that if an inverter needs to deliver 1,000 watts of AC ...

What Is An Inverter

What Is An Inverter, And How Does It Work? In simple terms, an inverter is an electronic device that converts direct current (DC) into alternating current (AC). It gets the ...



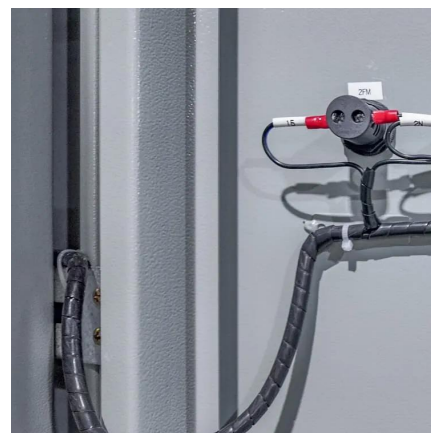


What Will An Inverter Run & For How Long? (With Calculator)

In simple terms, inverter efficiency refers to how well an inverter converts DC electricity into usable AC power. No inverter is 100% efficient--some energy always gets lost ...

How much energy can the energy storage inverter store?

Power ratings are typically expressed in kilowatts (kW) and signify the maximum output energy the inverter can provide at any given moment, while energy ratings are usually ...



How Much Energy Does a Mini Split Use? (With Calculator)

Here are mini split energy usage charts for watts and kilowatt hours (kWH) plus a mini split energy consumption calculator you can use to get an exact number of kilowatt hours ...

What Will An Inverter Run & For How Long? (With Calculator)

So I'm gonna explain to you guys in simple words about what you can run on your any size inverter and what are the key point to keep in mind. And also how long your inverter ...



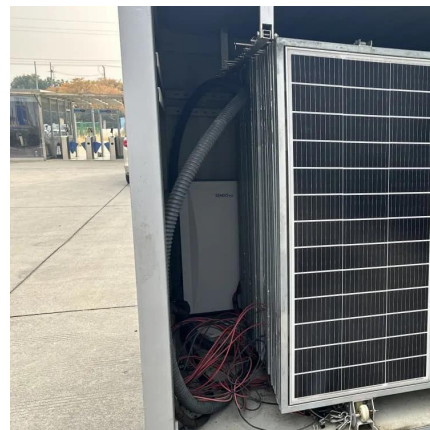
How to Maintain and Service 3-Phase AC Coupled Hybrid Inverters

Together, we can make a big difference for our planet. FAQ What is a hybrid inverter? A hybrid inverter manages power from solar panels and the grid. It also stores extra ...



How Much Energy Does A Solar Inverter Use

A solar inverter is a converter that converts or inverts the direct current (DC) energy produced by a solar panel, making it possible to power your home with solar energy. ...



Inverter Efficiency: Understanding How Much Power You're ...

In simple terms, inverter efficiency refers to how well an inverter converts DC electricity into usable AC power. No inverter is 100% efficient--some energy always gets lost ...





How Much Power Does a Solar Inverter Use: An Overview

The amount of power a solar inverter uses depends on its efficiency rating, size, and whether it's operating or in standby mode - a crucial factor when calculating your solar ...



Does Inverter Increase Electricity Bill?

It stores electricity in its batteries and requires charging for efficient functioning. However, its main purpose is to convert DC power to AC, which is then transmitted to the ...

Growatt inverters: everything you need to know

What is a solar inverter and how does it work In the context of solar energy, the photovoltaic inverter, (also called an inverter) is a vital and ...



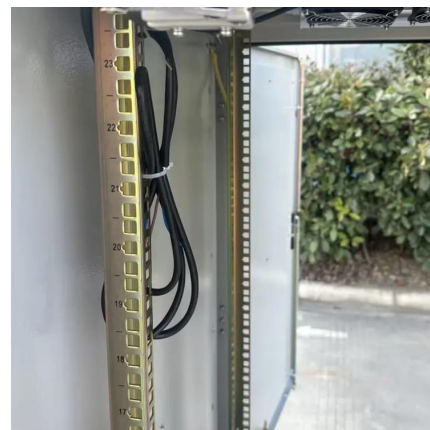
Does Inverter Increase Electricity Bill?

It stores electricity in its batteries and requires charging for efficient functioning. However, its main purpose is to convert DC power to AC, ...



How much power does an Inverter use just sitting there idling?

All inverters providing ready-to-use 120VAC have an idle consumption. There is a cost to running the circuitry that generates the 120VAC and 60Hz frequency. My 4kW Victron ...



Contact Us

For catalog requests, pricing, or partnerships, please visit:
<https://www.bringmethehorizon.eu>