



**SolarMax Pro Energy Storage Systems**

## **How much does the weight of a double-glass module increase**





## Overview

---

In the case of a comparison between a 2 x 2.0 mm dual-glass module and a glass (3.2 mm)-backsheet module, the excess weight of the dual-glass is approximately 20%. How much does a glass module weigh?

The weight of glass-glass modules are still an issue, with current designs using 2 mm thick glass on each side for framed modules, the weight is about 22 kg, while 2.5 mm on each side will increase the module's weight to 23 kg. Compared to traditional glass-foil modules, which are about 18 kg, this is a 20% increase in weight.

What is a double glass module?

The double glass module design offers not only much higher reliability and longer durability but also significant Balance of System cost savings by eliminating the aluminum frame of conventional modules and frame-grounding requirements. The application of double-glass modules covers multiple markets including utility, residential and commercial.

Why are double glass modules symmetrical?

Mechanical constraints on cells: the fact that the structure of the double glass modules is symmetrical implies that the cells are located on a so-called neutral line, the upper part of the module being in compression during a downward mechanical load and the lower glass surface being in tension.

What is the thickness of a glass module?

The thickness of the front glass generally used for this type of structure is 3.2 mm. Dual-glass type modules (also called double glass or glass-glass) are made up of two glass surfaces, on the front and on the rear with a thickness of 2.0 mm each.

What is a dual-glass module?

Dual-glass type modules (also called double glass or glass-glass) are made up



of two glass surfaces, on the front and on the rear with a thickness of 2.0 mm each. Some manufacturers, in order to reduce the weight of the modules, have opted for a thickness of 1.6 mm. DualSun has chosen to stay with a thickness of 2.0 mm for reasons explained below.

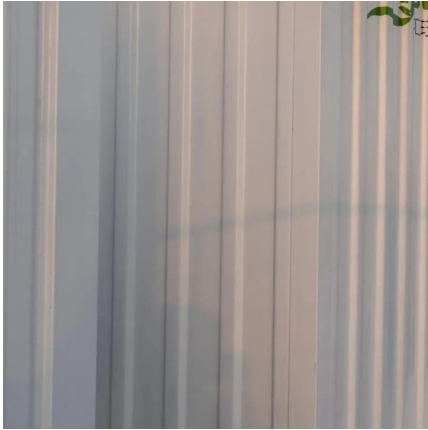
What is the difference between tempered glass and glass-foil modules?

Compared to traditional glass-foil modules, which are about 18 kg, this is a 20% increase in weight. Although there is no standard on glass thickness, in general it is a more complex and expensive process to produce very thin, tempered glass. However, 2.5 mm glass thickness does allow for frameless designs, which can reduce costs dramatically.



## How much does the weight of a double-glass module increase

---

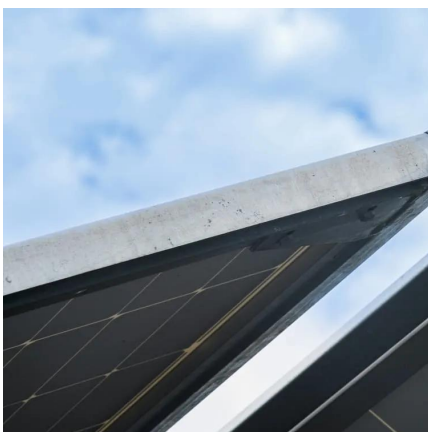


### How much does a glass bottle weigh?

Discover the factors that influence the weight of glass bottles, including size, shape, thickness, and type of glass. Understand how these elements affect functionality and design. Learn more ...

### Glass Weight Calculator

Tips for Using Glass Weight Calculator ? Double-check your measurements - glass weight calculations are very sensitive to dimensions, and errors can lead to ...



### The Weight of Double and Triple Glass Units

The weight of glass plays a big factor in architectural glazing. It is an important factor when determining what type of hardware and frame profile is required for windows and ...

### Can double glass module become trend?

Weight too much, 30% increase compared with normal panel. Glass weight more than 70% in the





dual glass module, now glass makers are trying to reduce glass thickness from 2.5mm to 2.0mm.



## Glass Weight Calculator

Definition: This calculator estimates the weight and volume of glass panels for various shapes (square, rectangle, triangle, circle, semicircle) based on glass type, density, dimensions, ...

## Glass Weight Calculator

Glass Weight Calculator Custom Glass Industries in Anaheim California is pleased to provide this glass calculator to the industry. Feel free to calculate to your hearts content. 1. Choose shape



## Presentation

Deformation of frameless glass-glass module is more uniform than framed glass-backsheet module. Mounting clips for glass-glass are typically more complicated and expensive. Packing ...



### Increasing power generation: maximizing the ...

Double-sided double-glass modules can increase the power output of the module by 20-30% when the conditions are ideal. And the background reflectivity of ...



## **DOUBLE GLASS SOLAR MODULE**

What is double glass photovoltaic module?  
Preface To further extend the service life of photovoltaic modules, double glass photovoltaic module has recently been developed and studied ...

### **What are Double Glass Solar Panels?**

Whereas double-glass solar modules will experience substantially less deformation due to the greater strength provided by two layers of glass, the probability of ...



### Weight of double-glass photovoltaic panels

Bifacial solar panels 670W - Renesola  
RS9-650-670MBG-E1 double glass The Renesola RS9-650-670MBG-E1 is a bifacial double-glass solar panel with a maximum power output of 670



## INSTRUCTIONS FOR PREPARATION OF PAPERS

The double glass module design offers not only much higher reliability and longer durability but also significant Balance of System cost savings by eliminating the aluminum frame of ...

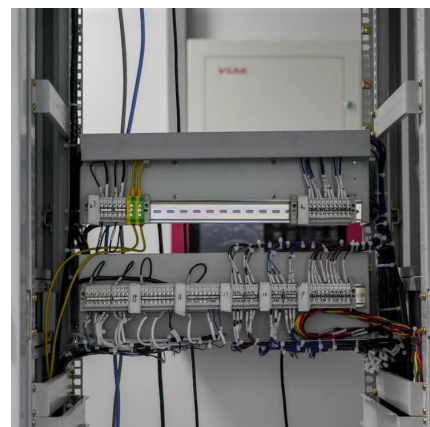


## **Single-glass versus double-glass: a deep dive into module ...**

Such a combination would not only drive up costs but also add significant weight to the modules, making them less suitable for installation and transportation. The only feasible ...

## Double the strengths, double the benefits

While double glass modules offer numerous benefits, it's essential to consider factors such as weight and installation requirements. Advancements in manufacturing have led ...







### [How Much Does A Mobile Home Weigh? Single Wide ...](#)

How Much Does a Mobile Home Frame Weigh?  
The frame of a doublewide mobile home (16×80) will weigh about 4,200 lbs. This will give you ...

### [Bifacial Solar Modules , Maysun Solar](#)

Bifacial photovoltaic modules are available in two types: single-glass bifacial modules and double-glass bifacial modules. Single-glass bifacial modules are ...



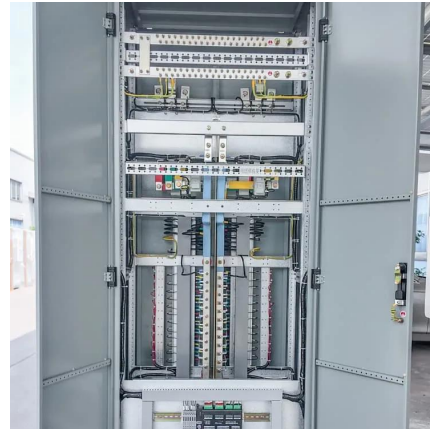
### **Glass-Glass PV Modules**

Compared to traditional glass-foil modules, which are about 18 kg, this is a 20% increase in weight. Although there is no standard on glass thickness, in general it is a more complex and ...

### [How much does an aluminum window weigh?](#)

Each of these components adds to the overall weight of the window. For instance, windows with integrated blinds between the glass layers will weigh more than those without. ...





### INSTRUCTIONS FOR PREPARATION OF PAPERS

While designing the double-glass module, it was also decided to increase the distance between the edge of the cell and the edge of the module, allowing for an increase of the maximum ...



### What are the advantages of dual-glass Dualsun modules?

For example, for a Dualsun module with dimensions 1722 mm x 1134 mm, the weight in glass (2.8 mm) - backsheet configuration is 20.0 kg while it is 25.1 kg for bi-glass (2 x 2.0 mm), which ...



## Contact Us

For catalog requests, pricing, or partnerships, please visit:  
<https://www.bringmethehorizon.eu>