



**SolarMax Pro Energy Storage Systems**

# **How much does it cost to install wind power at a communication base station**





## Overview

---

How can wind energy help a telecom tower?

Contact Freen to discuss wind energy options for your infrastructure. Hybrid renewable energy systems are ideal for telecom towers in areas where grid connection is expensive or unavailable. Combining wind turbines, solar panels, and battery storage creates an efficient solution. These systems ensure energy availability around the clock.

How much does an onshore wind project cost?

After factoring in construction costs for foundations, access roads, cabling, grid connections, permitting, and installation labor, the total installed cost per megawatt rises to between \$3 million and \$4 million ( $\approx 128.2$  years of non-stop labor earning \$15/hour) for a completed utility-scale onshore wind project.

How much does a distributed wind energy system cost?

The residential and commercial reference distributed wind system LCOE are estimated at \$240/MWh and \$174/MWh, respectively. Single-variable sensitivity analysis for the representative systems is presented in the 2019 Cost of Wind Energy Review (Stehly, Beiter, and Duffy 2020). Analysts included the LCOE estimate for a large distributed wind energy.

What are the costs of a wind project?

Wind projects' costs include expenses other than turbines, like wind resource assessment and site analysis; construction; permitting and interconnection studies; utility system upgradation, transformers, protection and metering of the equipment; insurance; operations, warranty, maintenance, and repair; and legal and consultation fees.

How much does a commercial wind turbine cost?

How much do commercial wind turbines cost?



A utility-scale wind turbine costs between \$1.3 million to \$2.2 million per MW of installed nameplate capacity. Most commercial-scale turbines installed nowadays are 2 MW in capacity and cost between \$3 and \$4 million to install.

How much does a community-scale wind turbine cost?

Moving up to larger 250 kW community-scale wind turbines suited for powering schools, farms, businesses and small neighborhoods, costs scale to approximately \$500,000 to \$750,000 ( $\approx 24$  years of your working lifetime at a \$15/hour job) each when factoring in installation.



## How much does it cost to install wind power at a communication base station

---



### Reducing Operational Costs with Wind Energy on Telecom Towers

Adopting wind energy as a sustainable power source for telecom towers offers a promising solution to this challenge. Telecom operators would be able to cut their energy ...

### What is the cost of building and maintaining a communication base station

In conclusion, building and maintaining a communication base station involves significant initial setup costs and ongoing maintenance expenses. These costs can vary widely depending on ...



### How Much Does A Wind Turbine Cost?

After factoring in construction costs for foundations, access roads, cabling, grid connections, permitting, and installation labor, the total installed ...

### How to make wind solar hybrid systems for telecom stations?

At present, wind and solar hybrid power supply systems require higher requirements for base





station power. To implement new energy development, our team will continue to conduct ...



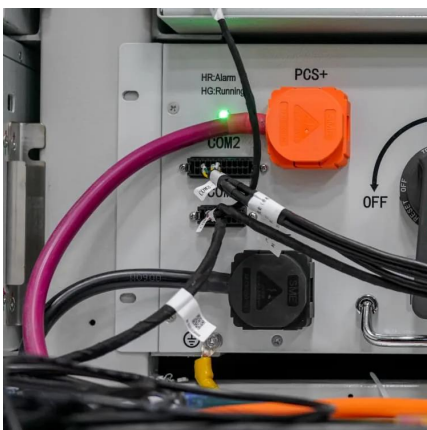
### [Ground Segment 101: FAQs on Antennas & Ground ...](#)

Discover key insights into antennas, ground stations, and networks. Learn about operations, costs, and benefits of satellite communication systems.



### [Here's how much a 5G wireless network really costs](#)

Have you ever wondered how much a 5G non-standalone Evolved Packet Core for up to 50,000 subscribers costs, including the installation and ...



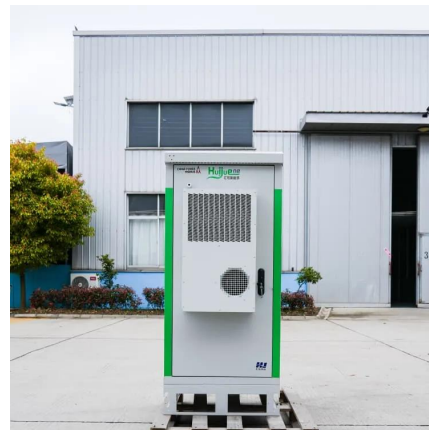
### [How Much Does A Tidal Energy Generator Cost?](#)

Another source, Power Technology, provides insights into specific tidal projects, noting that the Sihwa tidal power station in South Korea had an installation cost of ...



## Cost of Wind Energy Review: 2024 Edition

We used NREL engineering and cost models (including WISDEM and ORBIT), coupled with empirical data, to estimate the cost of each major component for a range of turbine and plant ...



## Cost Analysis: How Much Do Commercial Wind ...

Understanding how much do commercial wind turbines cost is critical for investors, regulators, and environmentalists alike. This cost analysis ...

## **Wind Solar Hybrid Power System for the Communication Base ...**

It is not very economical to establish a power grid for mobile communication business. So diesel generators is popular in Xinjiang. But the cost is high for storing and ...



## How much does a 5G base station cost?

The construction costs in rural and urban areas are different, and different cities will also incur different costs. For example, if you want to put a 5G base station in a high-end ...



## Wind Solar Hybrid Power System for the Communication Base Station

It is not very economical to establish a power grid for mobile communication business. So diesel generators is popular in Xinjiang. But the cost is high for storing and ...



## [How Much Does it Cost to Install an EV Charging ...](#)

So, in the end, how much does it cost to install an EV charging station?" In a straightforward installation (with enough capacity, existing ...

## How Much Do Commercial Lift Stations Cost? , Sewage Lift Station

Materials: High-grade materials may cost more initially but offer greater durability and reliability.  
Size / Volume: Larger lift stations -- designed to hold and process more wastewater -- ...





### [How much does it cost to build a wind farm? o ...](#)

The development of a wind farm It has become a key investment to move towards a sustainable future and reduce dependence on Fossil fuels. Before ...

## 2020 Cost of Wind Energy Review

Executive Summary This report uses representative utility-scale and distributed wind energy projects to estimate the levelized cost of energy (LCOE) for land-based and offshore wind ...



### [Base station performance and costs , Download Table](#)

Download Table , Base station performance and costs from publication: Relation between base station characteristics and cost structure in cellular systems , A ...



## What is the cost of building and maintaining a communication ...

In conclusion, building and maintaining a communication base station involves significant initial setup costs and ongoing maintenance expenses. These costs can vary widely depending on ...





### [The Role of Hybrid Energy Systems in Powering ...](#)

Discover how hybrid energy systems, combining solar, wind, and battery storage, are transforming telecom base station power, reducing costs, ...



### **How Much Does A Wind Turbine Cost?**

After factoring in construction costs for foundations, access roads, cabling, grid connections, permitting, and installation labor, the total installed cost per megawatt rises to ...



### **Unlocking the Power of Small Wind for Remote Telecom Towers**

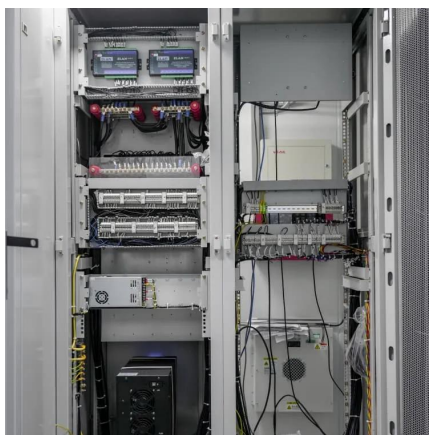
Small wind turbines generate electricity on-site, minimizing dependence on grid power and expensive diesel fuel. Over time, telecom companies see substantial savings, ...





## [Offshore wind transmission explained.](#) [Business Norway](#)

Offshore wind turbines create enormous possibilities for green energy. Placed far out at sea, offshore wind turbines harvest strong winds to ...



## **Cost Analysis: How Much Do Commercial Wind Turbines Really Cost**

Understanding how much do commercial wind turbines cost is critical for investors, regulators, and environmentalists alike. This cost analysis examines the numerous aspects ...

## **How Much Does a Wind Turbine Cost?**

As electricity prices rise and more homeowners seek sustainable energy solutions and residential wind turbines are gaining attention as an alternative to solar panels. But are they truly a smart ...



## **The Role of Hybrid Energy Systems in Powering Telecom Base ...**

Discover how hybrid energy systems, combining solar, wind, and battery storage, are transforming telecom base station power, reducing costs, and boosting sustainability.



### Anhua High Stable Wind Turbine Solar Module ...

A. System introduction The new energy communication base station supply system is mainly used for those small base station situated at remote area ...



## Contact Us

---

For catalog requests, pricing, or partnerships, please visit:  
<https://www.bringmethehorizon.eu>