



SolarMax Pro Energy Storage Systems

How many watts does a 24v solar panel use





Overview

How many watts of solar panels do I Need?

You need around 500-700 watts of solar panels to charge most of the 24V lead-acid batteries from 50% depth of discharge in 5 peak sun hours. You need around 1-1.2 kilowatt (kW) of solar panels to charge most of the 24V lithium (LiFePO4) batteries from 100% depth of discharge in 5 peak sun hours.

How many solar panels do you need to charge a 24v battery?

You need around 1-1.2 kilowatt (kW) of solar panels to charge most of the 24V lithium (LiFePO4) batteries from 100% depth of discharge in 5 peak sun hours.
How Many Solar Panels Does It Take To Charge A 24v 200Ah Battery?

.

How many watts a solar panel to charge a 200Ah battery?

You need around 830 watts of solar panels to charge a 24V 200ah lead-acid battery from 50% depth of discharge in 4 peak sun hours. You need around 1450 watts of solar panels to charge a 24V 200ah Lithium (LiFePO4) battery from 100% depth of discharge in 4 peak sun hours. Full article: [What Size Solar Panel To Charge 200Ah Battery?](#)

.

How many batteries can a 400 watt solar panel charge?

As we can see, a 400-watt solar panel will need 2.7 peak sun hours to charge a 100Ah 12V lithium battery. If we presume that we get 5 peak sun hours per day, we can actually fully charge almost two 100Ah batteries (or one 200Ah battery).

How many watts can a 400 watt solar panel produce?

A 100-watt panel can produce 100 watts per hour in direct sunlight. A



400-watt panel can generate 400 watts per hour under the same conditions. This doesn't mean they'll produce that amount all day, output varies with weather, shade, and panel orientation. Solar Power Meter Digital Solar Energy Meter Radiation Measuremen.

How much electricity does a 100 watt solar panel produce?

Here's how this works - A 100-watt solar panel will generate: 100 Wh in 1 peak sun hour. 200 Wh in 2 peak sun hours. 300 Wh in 3 peak sun hours. 400 Wh in 4 peak sun hours. 500 Wh in 5 peak sun hours. Alright, we can see that a 100-watt solar panel can (on average, given 5 peak sun hours per day) produce 500 Wh of electricity.



How many watts does a 24v solar panel use



How Many Watts Can a 60 Amp Charge Controller Handle?

A 60 amp charge controller has a maximum capacity of 1440 watts for a 24V solar panel system and 2880 watts for a 48V system. These charge controllers are mostly for 24V and 48V solar ...

Solar Power Basics for Beginners: Volts, Amps, ...

A solar panel consists of multiple smaller components, called solar cells, that do the actual work of converting photons into electrical power. In ...



Question: victron 100v 50a. 24v solar panel. how many panels can I use?

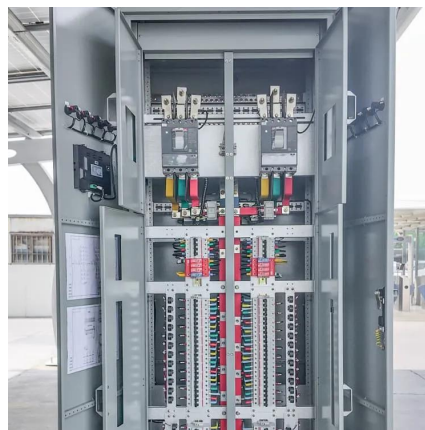
1400 watts is 7 panels, a prime number so you could go under with 2S3P at 1200 watts, or slightly over at 2S4P at 1600 watts. I'm looking at panels with VOC of no more than ...

How many watts of 24v solar energy

The wattage values of solar panels vary widely, with common residential panels producing



between 250 to 400 watts each. For instance, if a homeowner opts for four 300-watt ...



What Size Solar Panel To Charge 24v Battery? (incl. Calculator)

Most 100Ah batteries will have 12V, 24V, or 48V voltage. At a 100% discharge rate, the battery capacity is calculated by multiplying 100Ah with voltage ...

What Size Charge Controller You Need (Calculated)

A 10A PWM charge controller can support a 120 W solar array to charge a 12 V battery bank ($120\text{W}/12\text{V} = 10\text{A}$) or it can support a 240 W solar ...



How Many Volts Does a Solar Panel Generate? - ...

Solar panel voltage is a critical factor in solar energy production, with outputs ranging from 5 to 40 volts, depending on the type and conditions.



[How Many Amps Does A 200W Solar Panel Produce?](#)

A 200W solar panel produces 8-10 amps per hour (on average) if the solar panel is a 20V-24V, 200W solar panel system. You can calculate the amp output of ...



Solar Panel Wattage Explained: How Many Watts Do You Need?

Confused about solar panel wattage? Learn how many watts you need, how solar output works, and how to calculate the right solar setup for your home, RV, or cabin.

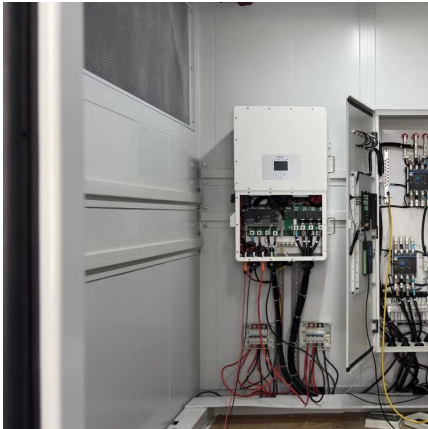
[How Many Volts Does A 250 Watt Solar Panel Produce?](#)

For a 250 watt solar panel system, you will need batteries with a capacity that matches your energy needs. Voltage: The voltage of the battery should match the voltage of your solar panel ...



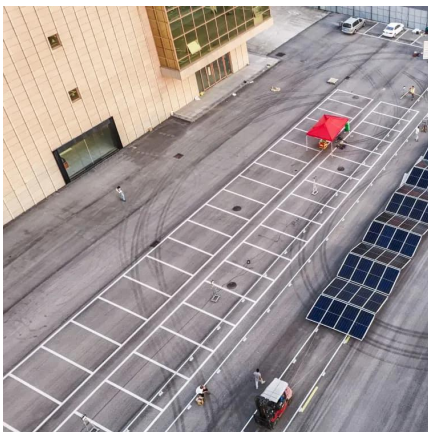
[Solar Charge Controller Sizing and How to Choose One](#)

Solar charge controllers are important components of a solar power system to ensure everything runs efficiently and safely of your solar panel system, learn everything about it [here](#).



[The Complete Off Grid Solar System Sizing Calculator](#)

Using your daily energy usage and Peak Sun Hours, and assuming a system efficiency of 70%, the calculator estimates the Wattage required for your off-grid solar system's ...



What Size Solar Panel To Charge 24v Battery? (incl. Calculator)

Turns out, you need about 550 watts of solar panels to fully charge a 24v 200ah lead acid battery from 50% depth of discharge in 6 peak sun hours. Note: Deep cycle batteries ...

[The Complete Off Grid Solar System Sizing Calculator](#)

Using your daily energy usage and Peak Sun Hours, and assuming a system efficiency of 70%, the calculator estimates the Wattage required for ...



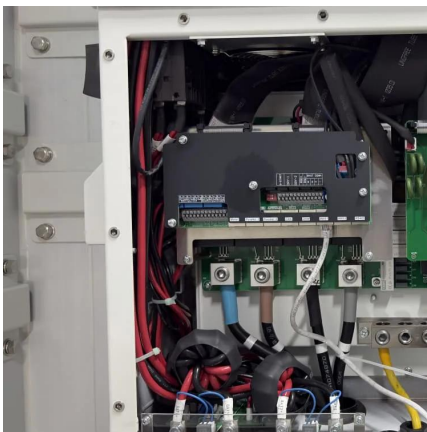


Standard Solar Panel Sizes And Wattages (100W ...

Whenever you want to find out what the standard solar panel sizes and wattages are, you encounter a big problem: There is no standardized chart that will tell ...

How many watts of solar energy does 24v200ah use , NenPower

When applied to a 24V 200Ah system, the calculation yields a maximum of 4800 watt-hours (Wh). This value indicates the total energy available if the system operated ...



Question: victron 100v 50a. 24v solar panel. how many panels ...

1400 watts is 7 panels, a prime number so you could go under with 2S3P at 1200 watts, or slightly over at 2S4P at 1600 watts. I'm looking at panels with VOC of no more than ...

How many watts does a 24v solar power plant generate?

The overall capacity of a 24V solar power plant hinges on the total wattage of the installed solar panels and the system configuration. Capacity is calculated by summing the ...



[How many watts is suitable for a 24v solar cell](#)

Most commonly, a standard 24V solar panel can range between 250 watts and 400 watts. This output allows for efficient energy generation ...



[How many watts does a 24v solar boat use , NenPower](#)

1. The wattage consumption of a 24V solar boat primarily depends on various factors, including the vessel's size, the number of electrical devices ...



What Size Solar Panel To Charge 100Ah Battery? (Calculator)

Most 100Ah batteries will have 12V, 24V, or 48V voltage. At a 100% discharge rate, the battery capacity is calculated by multiplying 100Ah with voltage (Battery Capacity (Wh) = 100Ah × ...





[The Complete Off Grid Solar System Sizing Calculator](#)

An off-grid solar system's size depends on factors such as your daily energy consumption, local sunlight availability, chosen equipment, the ...



[Solar Panel Wattage Explained: How Many Watts Do ...](#)

Confused about solar panel wattage? Learn how many watts you need, how solar output works, and how to calculate the right solar setup for ...



MPPT charge controller calculator: Find the right solar ...

MPPT Size Calculator The MPPT calculator has 6 input fields that will describe your solar energy system: 1- Solar panel wattage: This is the ...



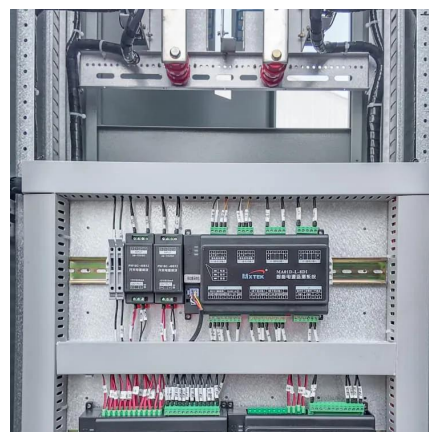
[How many watts is 24 volt solar energy? , NenPower](#)

To determine how many watts are produced by a 24-volt solar energy system, it's essential to understand the relationship between voltage, current, and power output.



Solar Panel Amps Calculator

Table: solar panel Watts to amps conversion
Summary 100-watt solar panel will store 8.3 amps in a 12v battery per hour. 300-watt solar panel will store 25 amps in a 12v battery per hour. 400 ...



How many watts is suitable for a 24v solar cell , NenPower

Most commonly, a standard 24V solar panel can range between 250 watts and 400 watts. This output allows for efficient energy generation suitable for residential ...

What Size Solar Panel To Charge 400ah Battery?

6 steps to calculate IDEAL solar panel size for 400ah battery There are many ways to calculate the size of solar panels for your battery but ...





How Many Watts Solar Panel Do I Need to Charge 12V Battery?

When it comes to solar power, one of the first questions people ask is "How many watts solar panel do I need to charge 12V battery?" The answer to this question depends on a ...

Contact Us

For catalog requests, pricing, or partnerships, please visit:
<https://www.bringmethehorizon.eu>