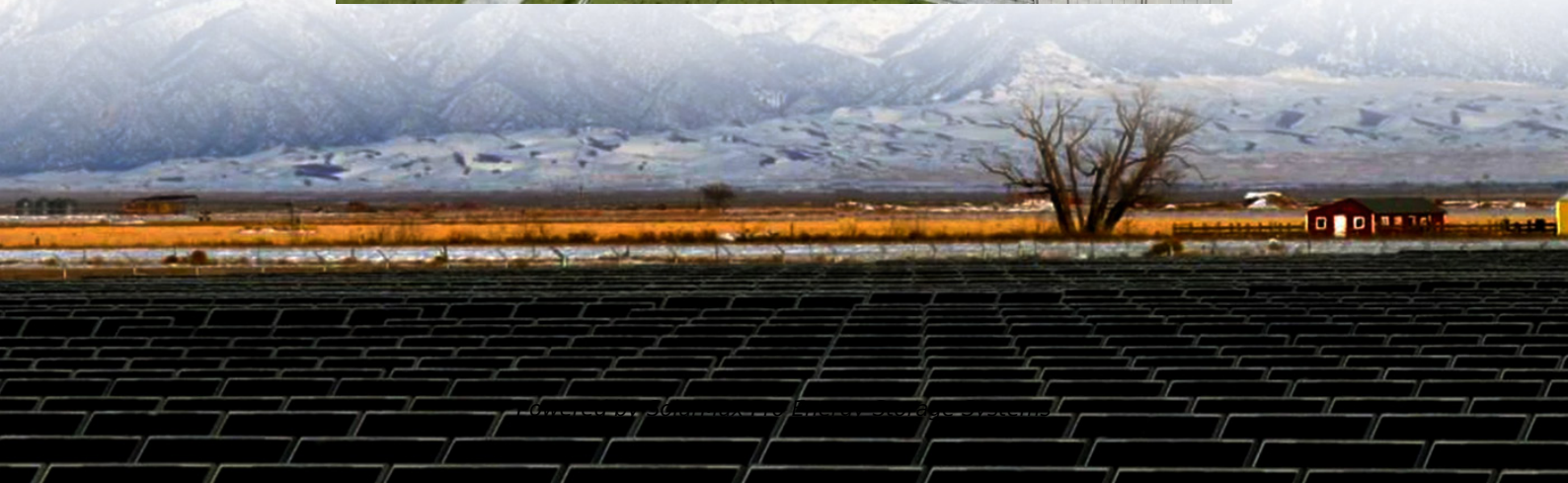




SolarMax Pro Energy Storage Systems

How many factories are there in Columbia Electric Power Base Station





Overview

The Columbia Generating Station has an on-site installation, which allows for storage of spent fuel rods in specially designed and manufactured casks. As of 2021, 45 casks have been loaded and stored in the installation, making room in the spent fuel pool. Overview Columbia Generating Station is a nuclear commercial energy facility located on the , 10 miles (16 km) north of . It is owned and operated by , a Washington.

Columbia Generating Station is a . It features a . The reactor core holds up to 764 fuel assemblies, and 185 , more technically known as control blades. The reactor is li.

Where is Columbia Generating Station located?

Columbia Generating Station is a nuclear commercial energy facility located on the Hanford Site, 10 miles (16 km) north of Richland, Washington. It is owned and operated by Energy Northwest, a Washington state, not-for-profit joint operating agency.

What type of power plant does Columbia have?

About Columbia Generating Station Type: General Electric boiling water reactor Generation: 1,207 megawatts (gross) Location: 10 miles north of Richland, Washington.

How much power does Columbia power plant produce?

The reactor is licensed for a power output of 3486 thermal megawatts (MWt). The gross electrical output of the plant is 1230 megawatts-electric (MWe). The Columbia Generating Station features six low-profile fan-driven cooling towers.

What type of reactor is Columbia Generating Station?

Columbia Generating Station is a BWR-5. It features a Mark II containment structure. The reactor core holds up to 764 fuel assemblies, and 185 control rods, more technically known as control blades. The reactor is licensed for a power output of 3486 thermal megawatts (MWt). The gross electrical output of



the plant is 1230 megawatts-electric (MWe).

Is the Columbia Generating Station a dry site?

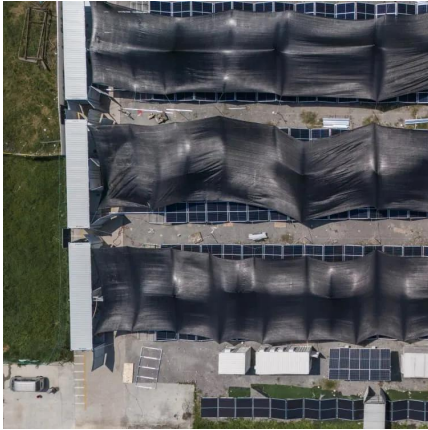
According to the U.S. Nuclear Regulatory Commission, the Columbia Generating Station site is a "Dry Site" since the plant is above the Design Basis Flood Line. ^ 6 × concentric low-profile precast concrete cooling towers, each with 6 × individual induced-draft cooling cells, for a total of 36 induced-draft cooling cells.

When did Columbia start producing electricity?

Licensed by the Nuclear Regulatory Commission in 1983, Columbia first produced electricity in May 1984, and entered commercial operation in December 1984. Columbia produces 1,207 megawatts net electricity. Columbia Generating Station is a BWR-5. It features a Mark II containment structure.



How many factories are there in Columbia Electric Power Base Stati



Columbia Plant Overview

Westinghouse Electric Company Headquarters - Cranberry Woods, Pennsylvania, USA Nearly half of the nuclear power plants in operation worldwide, and nearly 60 percent in the United ...

Oak Creek Power Plant

Oak Creek Power Plant, also known as South Oak Creek, is a base load, coal- and natural gas-fired, electrical power station located on Lake Michigan in Oak Creek, Wisconsin. Oak Creek ...



[Nuclear Energy: Columbia Generating Station](#)

Columbia Generating Station is the northwest's only commercial nuclear energy facility and is the third largest electricity generator in Washington state, behind ...

Columbia Generating Station

Columbia Generating Station is a nuclear commercial energy facility located on the Hanford Site, 10 miles (16 km) north of Richland,



Washington. It is owned and operated by Energy ...



List of power stations in Maine

The Mason Station in Wiscasset was a coal-fired plant built in 1941-42, with the capability of producing 153,500 kilowatts giving it the status, at that time, of Maine's second largest electric ...

Frequently Asked Questions (FAQs)

Details on how EIA calculates capacity factor are included on page 21 of the Electric Power Monthly Technical notes. Nuclear power reactors have the highest average monthly and ...



Arrow Lakes Generating Station

Overview The Arrow Lakes Generating Station Project saw the addition of a powerhouse located immediately downstream of BC Hydro's water storage Hugh Keenleyside Dam on the ...



[List of largest power stations in the United States](#)

List of largest power stations in the United States
Map of all utility-scale power plants This article lists the largest electricity generating stations in the United ...



A sense of units and scale for electrical energy production and

The output of electric power facilities are often described in terms of their maximum capacity; this is a metric of power (not energy), measured in watts (W). There are ...

[Nuclear Energy: Columbia Generating Station](#)

Columbia Generating Station is the northwest's only commercial nuclear energy facility and is the third largest electricity generator in Washington state, behind Grand Coulee and Chief Joseph ...



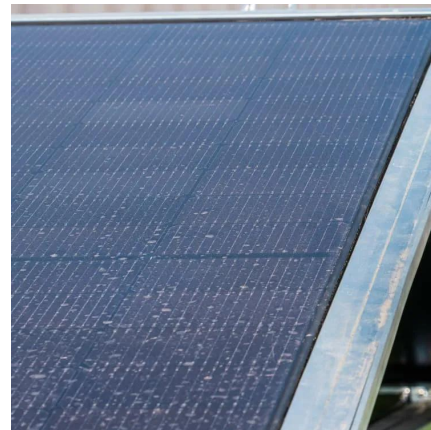
Columbia Generating Station

The Columbia Generation Station, or CGS, is a 1,207 gross MW boiling water nuclear reactor located in Richland, Washington. It began commercial operations in December ...



How It Works: Electric Transmission & Distribution and ...

Substations Substations serve as critical nodes connecting generation, transmission, and distribution networks. While substations are used for several distinct system functions, most ...

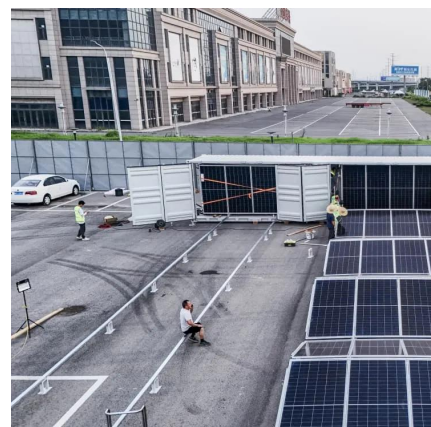


Columbia Nuclear Generating Station , The Center for Land Use

The sole survivor of the Washington Public Power Supply System (WPPSS) program's ambitious construction plan of the 1970's, to build five nuclear units at two locations, the Columbia ...

[Spring refueling begins at Columbia Generating Station](#)

Years of rigorous planning go into each refueling outage, with long-lead planning starting many years in advance. Columbia Generating Station, located 10 miles north of ...





Columbia Generating Station

The Columbia Generating Station has an on-site installation, which allows for storage of spent fuel rods in specially designed and manufactured casks. As of 2021, 45 casks have been loaded ...

[Interactive Map of U.S. Power Plants](#)

This map displays information on location, fuel type, electric generation, generating capacity, ownership, and emissions for over 10,000 power plants across the country.

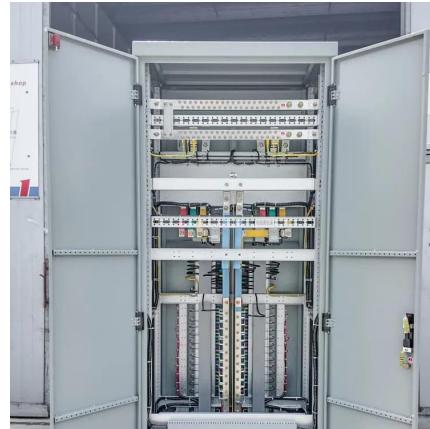


[Interactive Map of U.S. Power Plants](#)

This map displays information on location, fuel type, electric generation, generating capacity, ownership, and emissions for over 10,000 power plants ...

Power Plants and Storage Facilities

Concord Generating Station , PDF Elm Road Generating Station , PDF Germantown Power Plant , PDF Glacier Hills Wind Park , PDF Hydroelectric Power Plants , PDF , Project Data Ixonia ...



[List of largest power stations in the United States](#)

List of largest power stations in the United States
Map of all utility-scale power plants This article lists the largest electricity generating stations in the United States in terms of installed ...



Columbia Nuclear Generating Station , The Center for ...

The sole survivor of the Washington Public Power Supply System (WPPSS) program's ambitious construction plan of the 1970's, to build five nuclear units ...



Columbia Generating Station , EFSEC

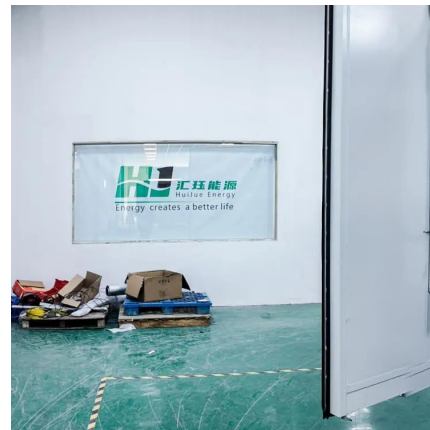
The Columbia Generating Station (CGS), formerly known as WNP-2, is an operating nuclear electric generating station located near Richland. The project is sited on land leased from the ...





Callaway Nuclear Generating Station

The Callaway Plant is a nuclear power plant located in Callaway County, Missouri. The plant is Missouri's only nuclear power plant and is close to Fulton, Missouri. [2] The 2,767 acres (1,120 ...



Power Plant Listing

Power Plant Listing Following is a list of Power Plants Listed in alphabetical order. Please use the filters on sidebar to refine the list based on technology used by ...

Contact Us

For catalog requests, pricing, or partnerships, please visit:
<https://www.bringmethehorizon.eu>