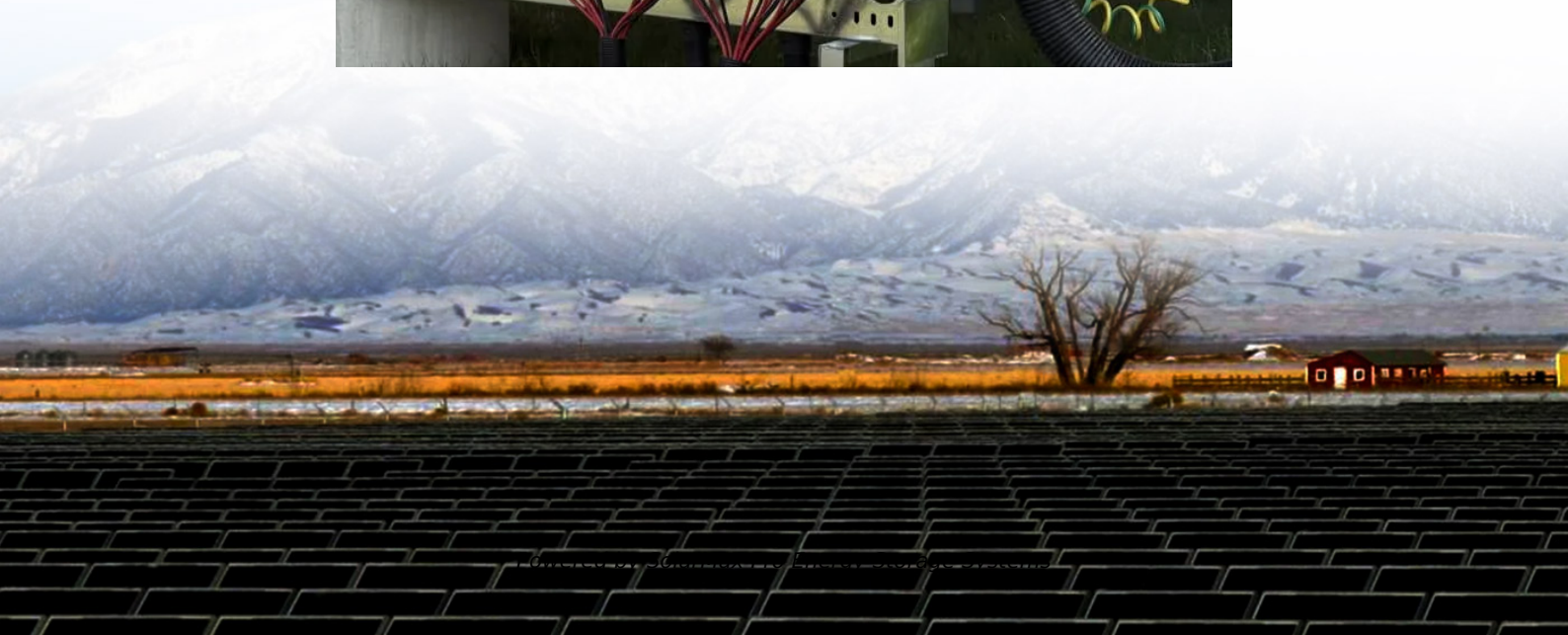




SolarMax Pro Energy Storage Systems

How long does it take to fully charge a lithium battery





Overview

On average, a standard lithium-ion battery takes between 1 to 4 hours to reach full charge when using a typical charger. Fast-charging technologies can reduce this time substantially, but they must be managed carefully to avoid overheating and capacity degradation. How long does it take to charge a lithium ion battery?

Lithium-ion batteries are commonly used in smartphones and tablets, with charging times dependent on the device's battery size and the type of charger. For most smartphones, a standard charger with an output of around 5W to 10W (approximately 1-2 amps) can take between 2 to 4 hours to fully charge a typical 3,000-4,000 mAh battery.

How long does a lithium battery charge last?

Conclusion The simple answer: For lithium batteries, the first charge should last just as long as it takes to reach full—usually 1 to 3 hours depending on the device. Forget the myths about 8-hour charging or full discharges. With lithium battery charging, modern technology does most of the heavy lifting.

How long does it take to charge a battery?

Effective Capacity = $2\text{Ah} \times (1 - 0.50) = 1\text{Ah}$ Calculate Charging Time: Now, divide the effective capacity by the charger's current: Charging Time = $1\text{Ah} / 1\text{A} = 1\text{ hour}$ In this example, it will take 1 hour to charge the battery from 50% to 100%.

How long does a 100Ah lithium battery take to charge?

100Ah lithium battery will take about 10.5 hours to get fully charged from 100% depth of discharge (0% SoC) using a 10A charger. How long to charge a lithium (LiFePO4) battery?

Calculating the battery's exact charge time is not an easy task.

How important is the first charge of a lithium-ion battery?



Lithium batteries have revolutionized the way we power our devices, with high energy density, long life, and lightweight design. However, the first charge of a lithium battery is critical to its future performance. Understanding the initial charging time of a lithium-ion battery can help maximize its lifespan and improve efficiency.

How do you calculate lithium ion battery charge time?

How do you calculate lithium-ion battery charging time?

Here are the methods to calculate lithium (LiFePO₄) battery charge time with solar and battery charger. Formula: charge time = (battery capacity Wh × depth of discharge) ÷ (solar panel size × Charge controller efficiency × charge efficiency × 80%)



How long does it take to fully charge a lithium battery



[How Long to Charge a 12v Battery at Various Amps](#)

Learn how to calculate charging time for 12V batteries based on capacity and amperage, including inefficiency adjustments and approximate ...

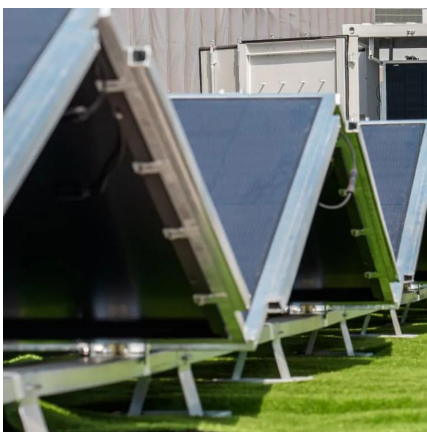
Lithium (LiFePO4) Battery Charge Time Calculator & Formula

For most smartphones, a standard charger with an output of around 5W to 10W (approximately 1-2 amps) can take between 2 to 4 hours to ...



[How Fast Can You Charge or Discharge a 100Ah Battery?](#)

Understanding how fast you can charge or discharge a 100Ah battery is essential to maintain its lifespan and efficiency. In this article, we'll explore what factors affect charging ...



Battery Charging Time Calculator

This Calculator is designed to help you estimate how long it will take to charge a battery based on its capacity, charger current, and charge level.



This calculator is especially ...

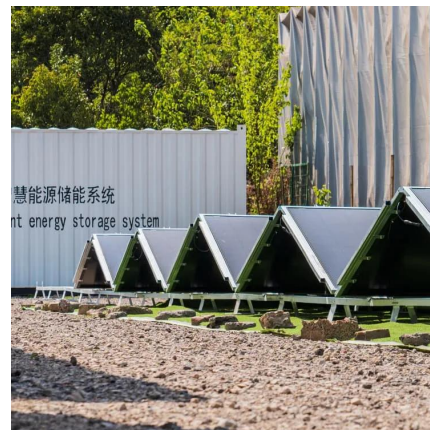


Charging a Lithium-Ion Battery: How Long It Takes, Tips, and ...

It typically takes about 1 to 4 hours to fully charge a lithium-ion battery, depending on the device and charger used. Most smartphones fully charge in approximately 1.5 to 2.5 ...

[How Long Does It Take To Charge a Lithium Battery?](#)

The conventional lithium battery takes about 2 to 4 hours to charge fully. The duration mainly depends on its age, ampere hour (Ah) rating, ...



[5 Easy Mistakes to Avoid When Charging Lithium-Ion ...](#)

Source: Shutterstock Letting a lithium-ion battery go for long periods without charging may cause permanent damage. This is because excessively ...



Lithium (LiFePO4) Battery Charge Time Calculator & Formula

Use our lithium battery charge time calculator to find out long how long it will take to charge a lithium battery with solar panels or with a battery charger. I will share two Lithium-ion ...



[How Long Do Rechargeable Batteries Take To ...](#)

How Long Does it Take to Recharge AA Batteries? It usually takes about three to four hours to charge any AA battery. This is more efficient than regular ...

[How Long Does It Take To Charge a Lithium Battery?](#)

The conventional lithium battery takes about 2 to 4 hours to charge fully. The duration mainly depends on its age, ampere hour (Ah) rating, and charging voltage. Here's a ...



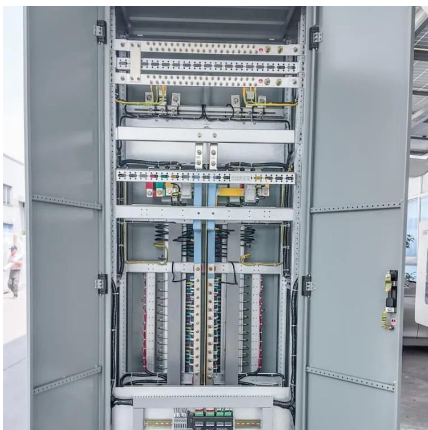
[Li-Ion Cells: Charging and Discharging Explained](#)

It's crucial to know how to charge and discharge li-ion cells. This article will provide you with a guide on the principles, currents, voltages, and steps.



How Long Does It Really Take to Fully Charge a Lithium Battery?

How long does it typically take to fully charge a lithium battery? Charging time varies depending on battery capacity and charger output but generally ranges from 1 to 5 hours for most ...



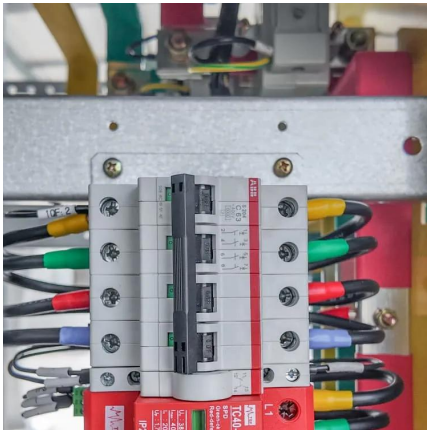
[How Long To Charge The 48v E-Bike Battery \[Don't ...](#)

I will discuss it in detail. How Long To Charge The 48v E-Bike Battery? Considering the battery type, charger amperage, battery amperage and ...

How Long Does It Take to Fully Charge a Lithium Ion Battery?

Discover how long to charge a lithium ion battery for optimal performance and longevity. Learn the best charging practices, average charging times, and tips to avoid overcharging. Keep your ...





[How Long to Charge a Lithium Battery?](#)

For most smartphones, a standard charger with an output of around 5W to 10W (approximately 1-2 amps) can take between 2 to 4 hours to fully charge a typical 3,000-4,000 ...

[How to Charge Lithium Golf Cart Batteries Effectively](#)

To charge lithium golf cart batteries effectively, use a compatible lithium battery charger, connect safely, monitor the process carefully, and ...



[Do I Need to Fully Charge a Lithium Ion Battery ...](#)

When you first get a lithium ion battery, it is important to charge it fully. This will help ensure that the battery performs at its best from the start.

[How Long Does it Take to Charge an E-bike Battery ...](#)

The amp charger being used also determines how long it will take an electric bike battery to charge. If your charger has a greater amp rating, the charging time ...



How Long Does It Actually Take to Fully Charge Lithium Batteries?

How long does it typically take to fully charge a lithium battery? Charging times vary depending on the battery capacity and charger output, but most lithium batteries take between 1 to 4 hours to ...

[How Long To Charge 100Ah Battery \(Lead-acid, ...\)](#)

Find out how long to charge a 100ah battery with our solar panel and battery charger calculators. Get tips to increase charge efficiency.



How Long to Charge a Lithium Battery for the First Time: Expert ...

The charging time for a new lithium-ion battery can vary based on several factors, including its age, capacity, and overall health. On average, fully charging a depleted lithium-ion ...



How Long to Charge a Lithium Battery for the First Time?

Use the charger that came with your device or one rated correctly for your battery. Plug it in and let it charge to full--usually around 4.2V per ...



How Long to Charge a Lithium Battery for the First Time?

Use the charger that came with your device or one rated correctly for your battery. Plug it in and let it charge to full--usually around 4.2V per cell. Once the charger indicates a ...

How Long to Charge a Lithium Battery for the First Time: Expert ...

Learn the optimal time required to charge a lithium battery for the first time. Discover best practices and tips to ensure longevity and performance.



[12v Battery Charging Time Calculator](#)

How long it takes to fully charge a battery with a trickle charger depends on the battery size and its initial charge. A 2-amp charger can take 24 to 48 hours to fully charge a ...



Contact Us

For catalog requests, pricing, or partnerships, please visit:
<https://www.bringmethehorizon.eu>