

How large an outdoor power frequency inverter should I buy





Overview

Before we go any further, we highly recommend that you choose a pure sine wave inverter. This type of inverter delivers high-quality electricity, similar to your utility company. This way, none of your appliance.

What size inverter do I Need?

The size of the inverter that you need greatly depends on the anticipated usage. All the devices that you plan to run at the same time have to be added and then pick the inverter closest for that size (about 20% up). Inverters generally have two types of watt ratings, and they are: Make sure that the power size that you are looking for is:.

What are the different solar inverter sizes?

Solar generators range in size from small generators for short camping trips to large off-grid power systems for a boat or house. Consequently, inverter sizes vary greatly. During our research, we discovered that most inverters range in size from 300 watts up to over 3000 watts. In this article, we guide you through the different inverter sizes.

How do you calculate inverter size?

Inverter Size = (Total Running Watts × 1.2) + Highest Surge Watts Example: * Safety Margin: Always add 20-30% extra for efficiency losses and future expansion. 4. Inverter Size Recommendations by Application *Tip: If you're powering your entire home, consider using a transfer switch for safety and convenience. Recommended models:.

How much power does an inverter need?

The continuous power requirement is actually 2250 but when sizing an inverter, you have to plan for the start up so the inverter can handle it. Third, you need to decide how long you want to run 2250 watts. Let's say you would like to power these items for an eight-hour period.

Can you use a 600 watt inverter while camping?



With a 600-watt inverter, you will be able to enjoy a cup of coffee with toast in the morning while camping! 600-watts may not sound like much, but it easily powers small to medium size appliances and power tools. For example, this particular toaster oven (paid link) from Amazon is only 500-watts and it comes with a coffee-maker combo:.

How many watts can an inverter handle?

In our example, that would result in needing an inverter that can handle approximately 2600W ($2100W + 25\%$). Now that you have a thorough understanding of your power needs, you can select an inverter that adequately meets those requirements. Consider the following factors when choosing the right inverter:



How large an outdoor power frequency inverter should I buy



Can Solar Inverters Be Installed Outside?

Understanding Solar Inverters Yes, solar inverters can be installed outside. They are generally weatherproof and built to withstand outdoor ...

How to select the Perfect Inverter for your house: A ...

How to choose a suitable inverter for your house? From understanding your power needs to choosing the best inverter for your home.



How to Choose the Right Inverter Size for Your Home

Choose an inverter with at least 600W capacity (to cover the fridge's 800W starting surge). Inverters come in sizes from 500W (for small cabins) to 5000W+ (for large homes). ...

Find the Right Inverter Size: How Big An Inverter Do You need?

This article dives into the details and intricacies of inverter sizing, offering a comprehensive



guide to help you select the perfect inverter for your needs.



What Size Power Inverter Is Needed for a House [Full Guide]

In general, a 3000W to 5000W inverter works well for most homes, but the exact size depends on factors like household appliances, total power consumption, and battery ...

How to size your inverter

Normally large inverters delivery three phase like 1MW power inverter for industrial use. What is the frequency? The operating frequency of an inverter should match the nominal ...



[INVERTER SIZE GUIDE: HOW TO CALCULATE...](#)

Whether you're powering a few small devices or running an entire household during outages, the right inverter can keep your essentials running. ...



What Size Inverter Do You Need? A Complete Guide for Home, ...

Choosing the right inverter size is crucial--too small, and your appliances won't work; too large, and you'll waste money. This guide will help you determine the ideal inverter ...



[How to Choose an Off-grid Inverter?_ inverter](#)

Backup Power Integration: For systems requiring backup power, choose an inverter with a generator starter feature. This feature uses dry ...

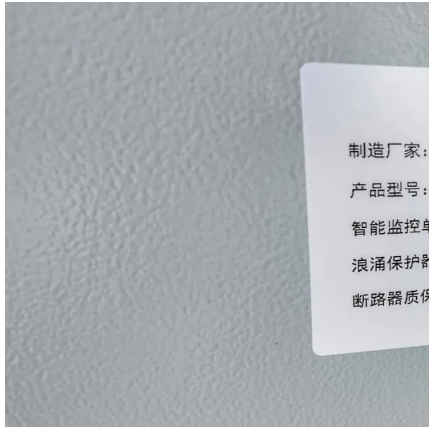
[How to Choose the Right Inverter Size for Your Home](#)

Choose an inverter with at least 600W capacity (to cover the fridge's 800W starting surge). Inverters come in sizes from 500W (for small ...



[What Size Inverter Do You Need? A Complete Guide ...](#)

Choosing the right inverter size is crucial--too small, and your appliances won't work; too large, and you'll waste money. This guide will help ...



[What Size Power Inverter Is Needed for a House \[Full ...](#)

In general, a 3000W to 5000W inverter works well for most homes, but the exact size depends on factors like household appliances, total power ...



[LiTime 2000 Watt 12V Pure Sine Wave Inverter](#)

The LiTime 2000W Pure Sine Wave Inverter is your go-to power solution for home, RV, and outdoor use. With 2000W continuous power, 4000W peak ...

[The Best Off-Grid Power Inverters Reviewed](#)

6 days ago· Looking to escape the grid and harness the power of nature? Our in-depth review of the best off-grid power inverters brings you the top options ...





[What Size Inverter do I Need? \[with Examples\]](#)

Sizing an inverter is very simple, as long as you know how much power do you exactly need. If you think that at some point you will be plugging in more ...

[INVERTER SIZE GUIDE: HOW TO CALCULATE WHAT YOU ...](#)

Whether you're powering a few small devices or running an entire household during outages, the right inverter can keep your essentials running. But how to calculate ...

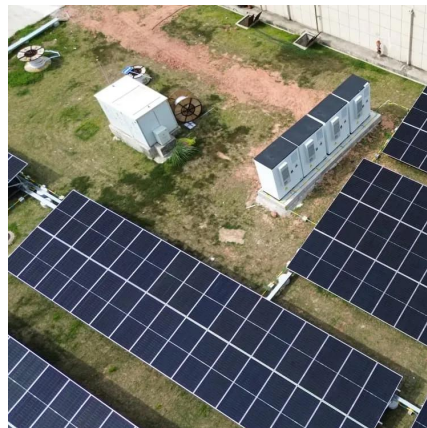


[What Size Inverter do I Need? \[with Examples\]](#)

Sizing an inverter is very simple, as long as you know how much power do you exactly need. If you think that at some point you will be plugging in more devices, consider that as well and ...

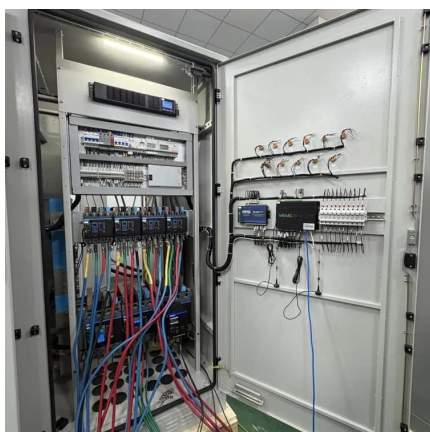
What Size Inverter Do You Need for Your Home? - PowerGen USA

Choosing the right inverter size is essential to ensure system efficiency, device compatibility, and uninterrupted power delivery. An undersized inverter can lead to system ...



[Solar Inverters Can Be Installed in These Places ...](#)

Large-Scale Commercial Projects: Outdoor installation is commonly employed in large-scale commercial solar projects such as solar ...



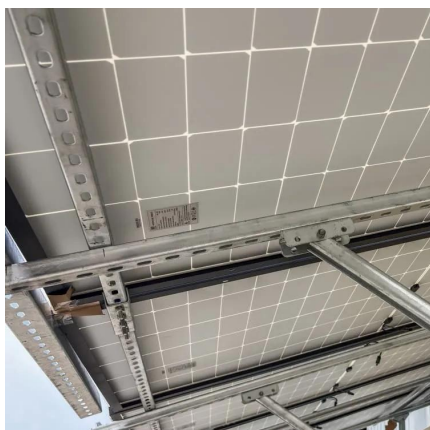
[What Happens If the Inverter Is Too Big](#)

Inverters play a crucial role in converting DC power to AC power, but choosing the right size is essential for optimal performance. In this article, ...



[What Size Inverter Do You Need for Your Home? - ...](#)

Choosing the right inverter size is essential to ensure system efficiency, device compatibility, and uninterrupted power delivery. An ...





Contact Us

For catalog requests, pricing, or partnerships, please visit:
<https://www.bringmethehorizon.eu>