



**SolarMax Pro Energy Storage Systems**

## **How high is the voltage in a communication base station**





## Overview

---

In communication power supplies, also known as switch rectifiers, they generally provide DC power with a voltage of -48V. After distribution, a voltage of -48VDC can be obtained. What is a base station in telecommunications?

In telecommunications, a base station is a fixed transceiver that is the main communication point for one or more wireless mobile client devices. A base station serves as a central connection point for a wireless device to communicate.

What is a base station in a cellular network?

A base station, also known as a cell site or cell tower, is an integral part of a cellular network. It serves as a central hub for communication between mobile devices and the network infrastructure. Here is a simplified explanation of how a base station works: 1.

Why are base stations important in cellular communication?

Base stations are important in the cellular communication as it facilitate seamless communication between mobile devices and the network communication. The demand for efficient data transmission are increased as we are advancing towards new technologies such as 5G and other data intensive applications.

Why is a base station important?

A base station plays a pivotal role in the realm of telecommunications, acting as the cornerstone of connectivity. It enables seamless communication by linking various wireless devices to broader networks, ensuring that data flows efficiently from one point to another.

How does a base station communicate with a client device?

Generally, if client devices wanted to communicate to each other, they would



communicate both directly with the base station and do so by routing all traffic through it for transmission to another device. Base stations in cellular telephone networks are more commonly referred to as cell towers.

Is a base station a transmitter or broadcast point?

Base stations are generally a transceiver, capable of sending and receiving wireless signals; otherwise, if they only transmitted signals out, they would be considered a transmitter or broadcast point. A base station will have one or more radio frequency (RF) antennas to transmit and receive RF signals to other devices.



## How high is the voltage in a communication base station

---



### Communication Base Station

Communication Base Station power system solution The independent communication base station power system adopts solar power supply, which can effectively solve the electricity ...

### Setting Up a Base Station CB Radio for Long Range Communication

Power Supply: Base station CB radios require an external power source, typically 120V AC, or a suitable power adapter, unlike mobile units that rely on vehicle batteries.



### [Low Voltage Communications , CSQ Electrical](#)

Reliability and Continuity: We ensure uninterrupted operation of communication equipment and base stations by providing a stable and reliable power supply, ...

### [What Are Base Station Antennas? Complete Guide](#)

In modern telecommunications systems, the base station antenna stands out as an



undeniable and crucial component to facilitate our daily ...



### How do communication base stations work

Communication base stations, or cell towers, are vital for wireless networks. They consist of antennas, transceivers, controllers, and power supplies to transmit and receive signals.



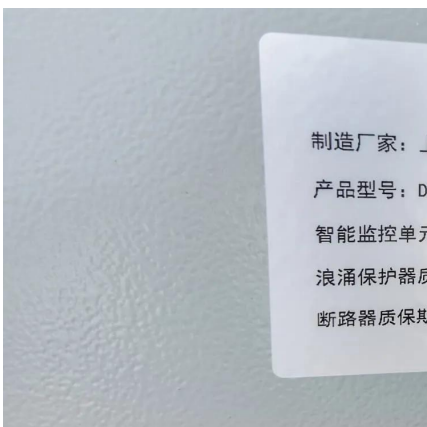
### Optimizing the power supply design for communication base stations

Comprehensively evaluate various factors and select the most suitable power system design scheme to ensure the stable and reliable operation of the base station.



### What is a base station?

What is a base station? In telecommunications, a base station is a fixed transceiver that is the main communication point for one or more wireless mobile client devices. A base ...



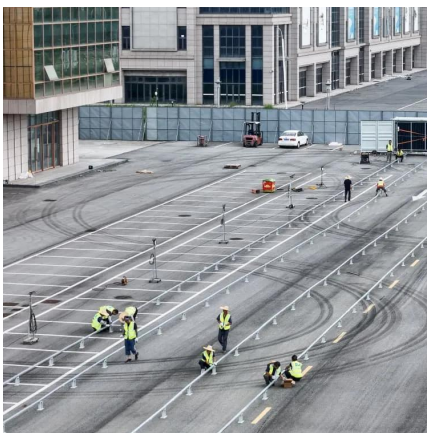




## Communication Base Station Voltage Regulation , Huijue Group

...

As we navigate this transformation, one truth emerges: Effective communication base station voltage regulation isn't just about preventing outages - it's about enabling the hyper-connected ...



## How to safeguard cellular base stations from five electrical hazards

Begin with a detailed description of a macro base station and recommendations for protecting the base station circuitry. Two crucial focus areas are the tower-mounted amplifier ...

## Why does the communication base station use -48V power supply?

Because the smallest communications network and communications engineering are in the telephone network, the telecom bureau power supply voltage are 48V.



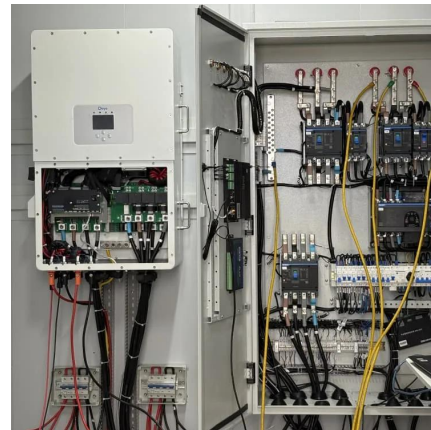
## Mobile base station

A mobile base station, also called a base transceiver station (BTS), is a fixed radio transceiver in any mobile communication network or wide area network (WAN). The base station connects ...



### Basestation

A base station (BS) is defined as a fixed communication facility that manages radio resources for one or more base transceiver stations (BTSs), facilitating radio channel setup, frequency ...



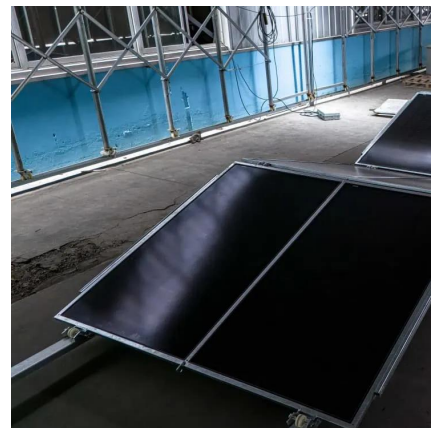
### Communication Base Station Voltage Regulation , Huijue Group

...

Why Voltage Fluctuations Are Crippling Modern Telecom Networks Have you ever wondered why communication base stations experience 12% more downtime during monsoon seasons? As ...

### Telecommunication base station system working principle and ...

In communication power supplies, also known as switch rectifiers, they generally provide DC power with a voltage of -48V. After distribution, a voltage of -48VDC can be obtained.





## How Solar Energy Systems are Revolutionizing Communication Base Stations?

Energy consumption is a big issue in the operation of communication base stations, especially in remote areas that are difficult to connect with the traditional power grid, ...

## Wholesale Supplier of Communication Base Station Voltage ...

The SBW-TX Series Communication Base Station Voltage Stabilizer is a next-generation intelligent power conditioning system, specifically engineered for telecom applications based ...



## What Is A Base Station?

A base station is an integral component of wireless communication networks, serving as a central point that manages the transmission and reception of signals between ...

## [LLVD & BLVD in Base Station Power Cabinets](#)

LLVD and BLVD Protection in Base Station Power Cabinets Introduction In modern communication networks, base stations, as core infrastructure, are ...





## From New Energy Vehicles to 5G Base Stations: How Silicon

1 day ago · 5G Communication: The "High-Temperature Stabilizer" of Base Stations 5G base stations have stringent requirements for power devices in high-frequency and high ...



## [Setting Up a Base Station CB Radio for Long Range ...](#)

Power Supply: Base station CB radios require an external power source, typically 120V AC, or a suitable power adapter, unlike mobile units that rely on vehicle batteries.



## Base Station Antenna

High power antennas, on the other hand, are used at rural areas to relay calls between the user and the base stations, which are spaced too far apart. The distribution of base stations with ...





## Why is the power supply voltage of the communication base station ...

In addition to providing power supply to the base station equipment after the mains power failure, the UPS power supply of communication base stations can also solve grid ...



## Contact Us

---

For catalog requests, pricing, or partnerships, please visit:  
<https://www.bringmethehorizon.eu>