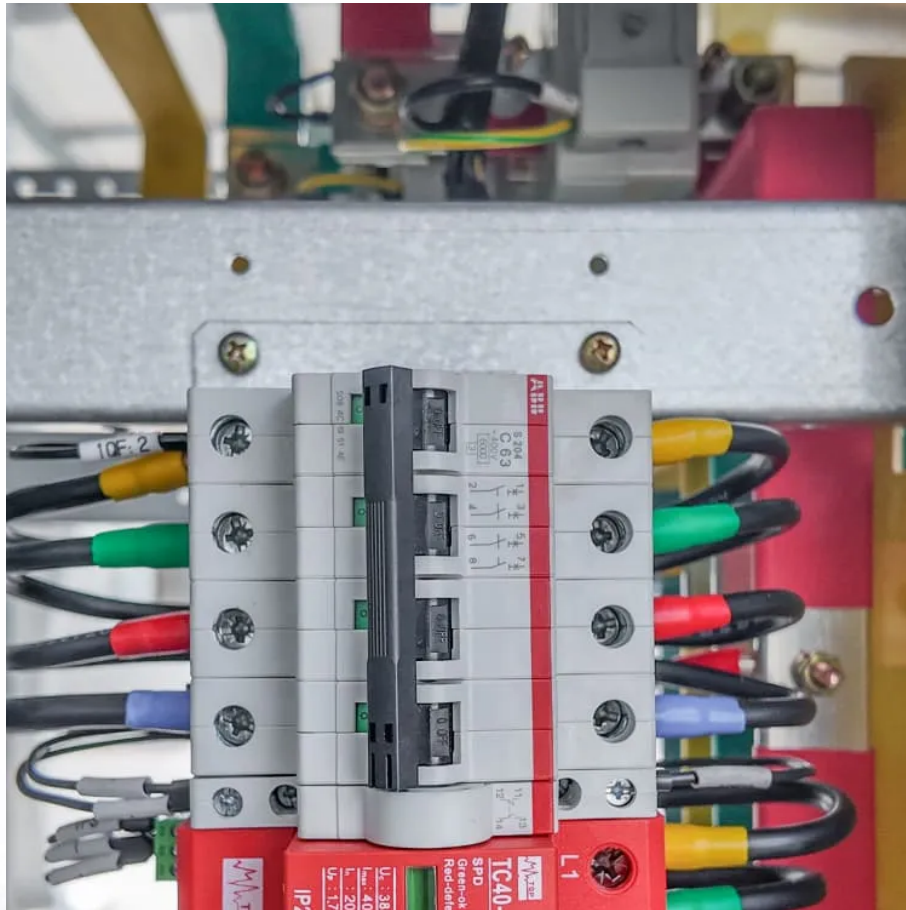




The image is a vertical composition. The top portion is a close-up photograph of a solar panel's junction box. It features a grey terminal block with multiple screw terminals. Several colored cables (yellow, green, red, blue) are plugged into the terminals. A red label on the box contains technical specifications: 'U: 3.38', 'I: 4.20', 'P: 14.20', 'SPD', 'Green-oh', 'Red-ohm', and 'IP2'. Below this, a red label with 'L1' is visible. The bottom portion of the image is a landscape photograph of a solar farm. Rows of solar panels stretch across a field towards a line of trees and a small red building. In the far background, a range of snow-capped mountains is visible under a clear blue sky.





Overview

Before we go any further, we highly recommend that you choose a pure sine wave inverter. This type of inverter delivers high-quality electricity, similar to your utility company. This way, none of your appliances run the risk of being damaged. Now, when it comes to sizing your inverter, you always need to check.

We have summarized the appliances that inverters from 300W to 3000W can run depending on their rated maximum power. Note to our readers: Use the above formula to determine.

What size inverter do I Need?

Inverters come in different sizes starting from as little as 125 watts. The typical inverter sizes used for residential and commercial applications are between 1 and 10kW with 3 and 5kW sizes being the most common. With such an array of options, how do you find the right size for you?

An inverter works best when close to its capacity.

What are the different solar inverter sizes?

Solar generators range in size from small generators for short camping trips to large off-grid power systems for a boat or house. Consequently, inverter sizes vary greatly. During our research, we discovered that most inverters range in size from 300 watts up to over 3000 watts. In this article, we guide you through the different inverter sizes.

How to calculate inverter size?

Using the Inverter Size Calculator is quick and easy. You'll need three inputs: Total Wattage (W): This is the total power consumption of all the appliances or devices you plan to run through the inverter. Safety Factor: A multiplier to ensure some buffer above your actual power requirement. Typically ranges from 1.1 to 1.5.

How to choose a solar inverter?



Choose an inverter that has a surge watt rating equal to or greater than this value. As for voltage drop, check the wire length between your solar panels and the batteries. If the wire length is long, you may need to choose a lower voltage system (12V, 24V, or 48V) to minimize voltage drop.

How much power does an inverter need?

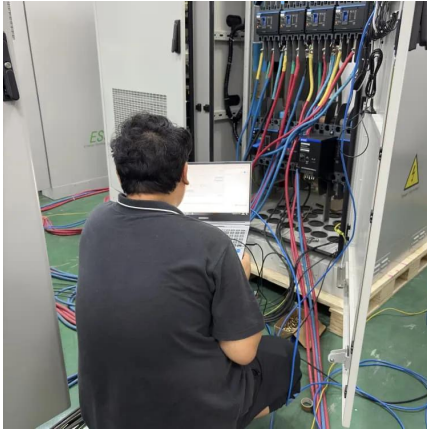
The continuous power requirement is actually 2250 but when sizing an inverter, you have to plan for the start up so the inverter can handle it. Third, you need to decide how long you want to run 2250 watts. Let's say you would like to power these items for an eight-hour period.

What size cable do I need for a 3500W inverter?

For inverters rated up to 3500W, the cable size should be 1/0 AWG, sufficient to handle the startup and continuous current required. Another consideration is the inline fuse, as this will protect both sides of the system in the event of a shortage in the system. To ascertain the fuse you need, divide the AC wattage by the DC Voltage.



How big an inverter should I use for a 60w



Inverter Size Calculator

Inverter Size (W) = (Total Wattage × Safety Factor) ÷ Inverter Efficiency. This ensures that the inverter can handle both the load and the efficiency losses. Let's walk through a simple ...

[How to Correctly Calculate Solar Panel, Inverter, ...](#)

To figure out exactly what size solar panel batteries charge controller and inverter you will need we have to carefully calculate and set up ...



[How To Size A Solar Inverter in 3 Easy Steps](#)

Choose an inverter that has a surge watt rating equal to or greater than this value. As for voltage drop, check the wire length between your solar panels and the batteries. If the wire length is ...

What Size Wire For Any Inverter: Inverter Wire Size Chart

Choosing the right cables for your inverter can be downright confusing. This guide helps you



find the right size wire for any sized inverter.

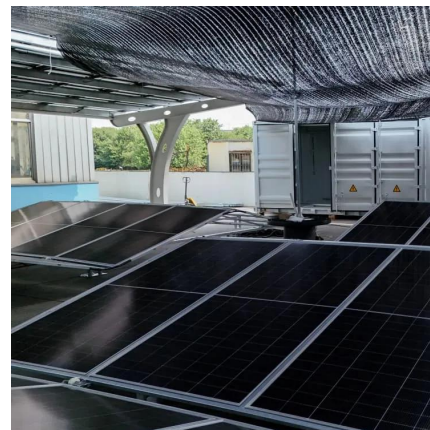


[What Size Inverter to Run a 200W Solar Panel?](#)

An inverter can run a 200w solar panel if it is the right size. Use the proper method to size an inverter for solar panels and avoid issues.

How to Choose the Right Size Solar Inverter: Step-by-Step with ...

Wondering what size solar inverter do I need for your solar system? This guide walks you through calculating inverter size based on panel capacity, power usage, and safety ...



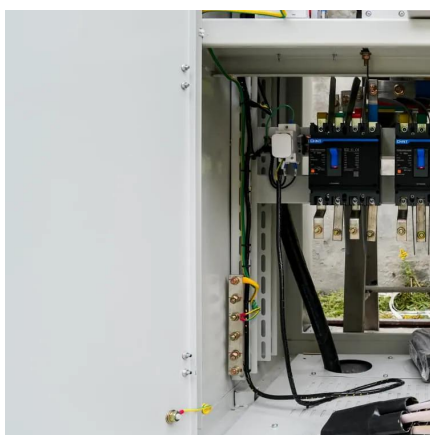
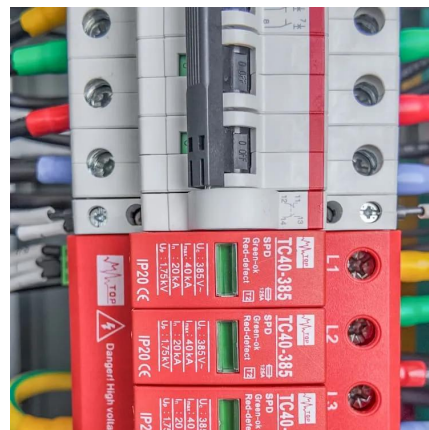
[How big an inverter should I use for a 300w solar panel](#)

Inverter Size Needed To Run A TV And Lights. Generally, a 300-watt inverter should be enough to run your TV and household lights. More specifically, a 300W inverter is big enough to run an ...



[Inverter Size Chat: What Size Inverter Do I Need?](#)

That's why I've put together a handy inverter size chart in order for you to quickly find out what size inverter is best for your needs. We'll start by going through the basic considerations, use ...

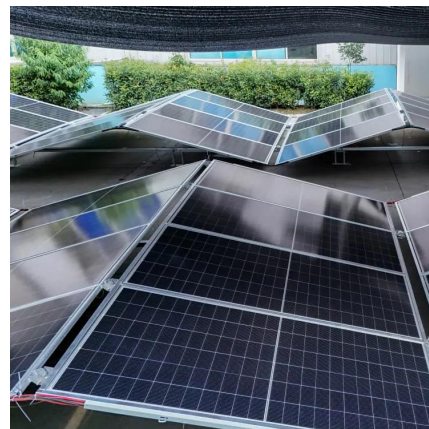


[Soldering Iron Wattage: Powering Up Your Soldering ...](#)

Different solders have different melting points, and this should be taken into account when choosing the wattage of your soldering iron. In my ...

[What Size Inverter Do I Need to Run a TV](#)

One thing to remember, do not use multiple devices if the inverter's capacity is used above 80 to 90 percent of the inverter's full capacity. There has to be enough power ...



[Inverter Size Chat: What Size Inverter Do I Need?](#)

What Size Inverter Do I Need? It's actually very easy to work out what size inverter you need. It all comes back to when appliances and electronics you ...



[How To Size A Solar Inverter in 3 Easy Steps](#)

Picking the right solar inverter isn't rocket science, but it's not a wild guess either. Match your inverter size to your solar panel output, leave a little ...



[How To Size an Inverter: Solar Inverter Sizing Explained](#)

When sizing an inverter, calculate the total wattage needed and understand surge vs. continuous power. Choose the right size with a 20% ...

[what size inverter for 200 watt solar panel](#)

Additional Features to Consider in an Inverter
Power Surge Capacity: Definition: Some inverters can handle short bursts of power higher than their rated capacity, which is ...





[What Size Solar Panel Do I Need to Run a 12V ...](#)

Learn the right solar panel size to power your 12V fridge for outdoor adventures. Get tips on efficiency, components, and calculations for ...

[What Size Inverter You Need \(Calculations + Battery\)](#)

Choosing an inverter can be tricky when working out all the various factors involved in this calculation. You want to be sure you have enough ...



What Size Solar Inverter Do I Need? Experts Break It Down

Picking the right solar inverter isn't rocket science, but it's not a wild guess either. Match your inverter size to your solar panel output, leave a little headroom, and don't cheap ...

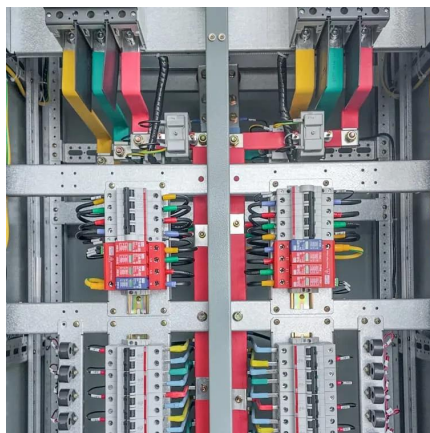
What Size Inverter Do I Need

To answer what size inverter do I need, you must know nominal load, surge power and continuous load of your appliances. After compensating the harmonic distortion losses of an ...



[Inverter Size Chat: What Size Inverter Do I Need?](#)

That's why I've put together a handy inverter size chart in order for you to quickly find out what size inverter is best for your needs. We'll start by going through ...



[Choosing and Sizing Batteries, Charge Controllers ...](#)

The inverter size is $60 \times 2 + 300 = 420$ watts
Daily energy use Next find the energy the home uses in a day. Figure out how long each electronic device ...



[Solar Inverter Sizing Calculator: Important Guide](#)

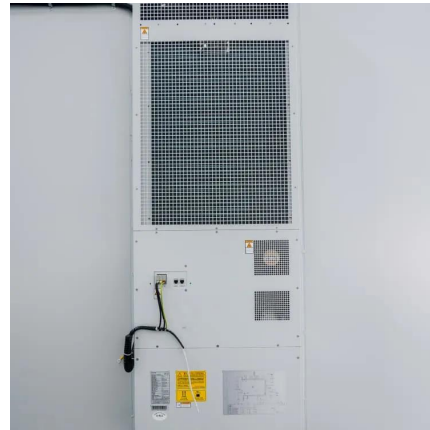
This comprehensive guide will walk you through solar inverter sizing, explain its importance, and help you understand how to use a solar inverter sizing calculator effectively.





How To Calculate Battery Size For LED Lights?

The size of the battery bank will depend on the number of total LED lights and their input wattage (which you can check on the box) LED lights ...



What Size Inverter You Need (Calculations + Battery)

Choosing an inverter can be tricky when working out all the various factors involved in this calculation. You want to be sure you have enough power to run all the different ...



How To Size an Inverter: Solar Inverter Sizing Explained

When sizing an inverter, calculate the total wattage needed and understand surge vs. continuous power. Choose the right size with a 20% safety margin. Factor in simultaneous ...



Contact Us

For catalog requests, pricing, or partnerships, please visit:
<https://www.bringmethehorizon.eu>