



**SolarMax Pro Energy Storage Systems**

## **How big an inverter should I use for 450kw**





## Overview

---

Before we go any further, we highly recommend that you choose a pure sine wave inverter. This type of inverter delivers high-quality electricity, similar to your utility company.

We have summarized the appliances that inverters from 300W to 3000W can run depending on their rated maximum power. Note to our readers: Use the above formula to determine.

The calculation for the required inverter size is done using the following formula:  $\text{Inverter Size (W)} = (\text{Total Wattage} \times \text{Safety Factor}) \div \text{Inverter Efficiency}$  This ensures that the inverter can handle both the load and the efficiency losses. How do I choose the right inverter size?

Here is our last bit of advice on how to select the correct inverter size: Check our inverter size chart. List all your appliances in the function of their power output. Apply our inverter size formula. Do not exceed 85% of your inverter's maximum power continuously. Oversize your inverter for extra appliances in the future.

What size solar inverter do I Need?

A 4.5 kW array (or ten 450-watt solar panels) would just about cover your consumption. The type of solar panels you choose can also impact the size of the inverter you need. Different types of solar panels have different wattage ratings and efficiency levels. The three main types of solar panels are monocrystalline, polycrystalline, and thin film.

How much power does an inverter need?

The continuous power requirement is actually 2250 but when sizing an inverter, you have to plan for the start up so the inverter can handle it. Third, you need to decide how long you want to run 2250 watts. Let's say you would like to power these items for an eight-hour period.

How much power does a 5 kW inverter use?

If your system pushes 5,000 watts, a 5,000-watt (or 5 kW) inverter is usually



the move. But it's not always one-to-one. Some setups undersize the inverter a bit—say, 4.6 kW for 5 kW of panels—to save cash without losing much power. It's a balancing act between cost, performance, and when you actually use electricity.

How to choose a power inverter?

Second, select an inverter. For this example, you will need a power inverter capable of handling 4500 watts. The continuous power requirement is actually 2250 but when sizing an inverter, you have to plan for the start up so the inverter can handle it. Third, you need to decide how long you want to run 2250 watts.

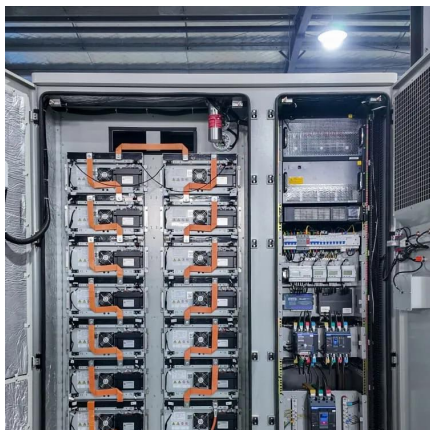
What size cable do I need for a 3500W inverter?

For inverters rated up to 3500W, the cable size should be 1/0 AWG, sufficient to handle the startup and continuous current required. Another consideration is the inline fuse, as this will protect both sides of the system in the event of a shortage in the system. To ascertain the fuse you need, divide the AC wattage by the DC Voltage.



## How big an inverter should I use for 450kw

---



### How to Choose the Right Size Solar Inverter: Step-by-Step with ...

This guide walks you through calculating inverter size based on panel capacity, power usage, and safety margins. We use real examples from installations in Texas and ...

### What Size Solar Inverter Do I Need? Experts Break It ...

What Size Solar Inverter Do I Need? A solar inverter should closely match your solar system's output in kW--typically within 80% to 120% of your ...



### [Optimize Your Solar Setup with Our Inverter Size ...](#)

Find the perfect inverter for your solar system with our Inverter Size Calculator. Ensure efficient energy conversion and maximize solar benefits ...

## INVERTER SIZE CALCULATOR

How big should a solar inverter be? Most installations slightly oversize the inverter, with a ratio between 1.1-1.25 times the array capacity,





to account for these considerations. The size of the ...

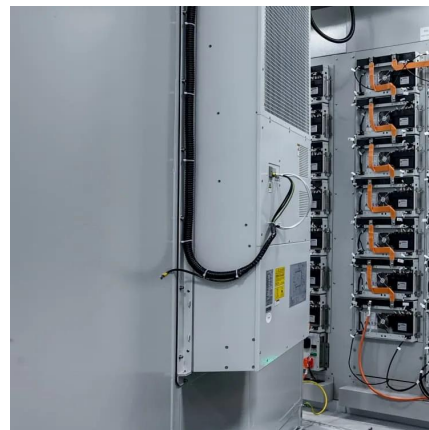


### [What Size Inverter You Need \(Calculations + Battery\)](#)

The size of the inverter required will be determined by the total wattage of the appliances you need to operate and the time they need to run. You also need to add a bit ...

## **How to Size an Inverter for a Solar System , What Steps to Follow**

How Inverters Work in a Solar System Before learning how to properly size a solar inverter, let us first understand the critical role of inverters in the solar PV system. Definition ...



### [How To Size A Solar Inverter in 3 Easy Steps](#)

In this guide, we share 3 easy steps on how to size a solar inverter correctly. We explain the key concepts that determine solar inverter sizing including your power needs, the type and number ...



## Solar Inverter Sizing Guide for Maximum Efficiency , Mingch

In most cases, the inverter size should be close to the size of your solar panel system, within a 33% ratio. For example, a 6.6kW solar array often pairs with a 5kW inverter to ...



## How big an inverter should I use for a 10kw photovoltaic

To calculate the ideal inverter size for your solar PV system, you should consider the total wattage of your solar panels and the specific conditions of your installation site. The general rule is to ...

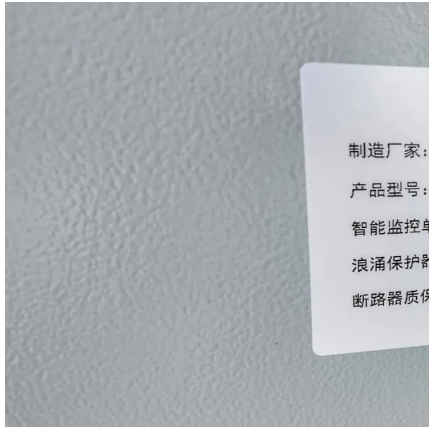
## What Size Power Inverter Is Needed for a House [Full Guide]

In general, a 3000W to 5000W inverter works well for most homes, but the exact size depends on factors like household appliances, total power consumption, and battery ...



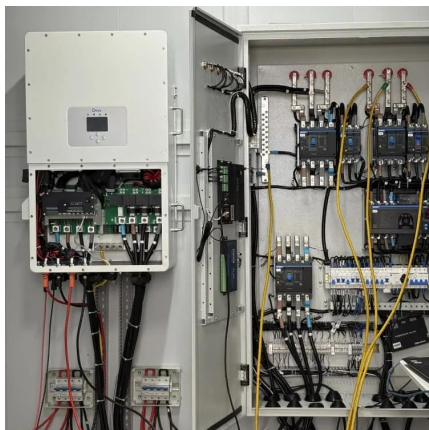
## Inverter Current Calculator

How to Use the Inverter Current Calculator To use the inverter current calculator, follow these steps: Input the power rating (in watts or kilowatts) of your inverter.



## Inverter Size Calculator

Choosing the correct size of inverter is crucial to avoid underpowering your devices or wasting energy. What Is the Inverter Size Calculator? The Inverter Size Calculator is a digital tool that ...



## [Solar Inverter Sizing Guide for Maximum Efficiency](#)

In most cases, the inverter size should be close to the size of your solar panel system, within a 33% ratio. For example, a 6.6kW solar array often ...

## What Size Solar Inverter Do I Need? Experts Break It Down

What Size Solar Inverter Do I Need? A solar inverter should closely match your solar system's output in kW--typically within 80% to 120% of your total panel capacity.





### [What Will An Inverter Run & For How Long? \(With ...](#)

So I'm gonna explain to you guys in simple words about what you can run on your any size inverter and what are the key point to keep in mind. ...

### [How many solar panels can an inverter handle](#)

Key Takeaways: Inverter Capacity: The number of solar panels an inverter can handle is primarily determined by its power rating, usually ...



### **Inverter Size Calculator & Formula Online Calculator Ultra**

Choosing the right inverter size is vital for anyone using a solar power system, backup power supply, or off-grid setup. A properly sized inverter can handle the power ...

### [How To Size A Solar Inverter in 3 Easy Steps](#)

In general, a 3000W to 5000W inverter works well for most homes, but the exact size depends on factors like household appliances, total power ...





## What size inverter do I need for solar panels? We answer

We are answering the question: "What size inverter do I need for solar panels" in this article. We share all about getting solar inverter dimensions right.



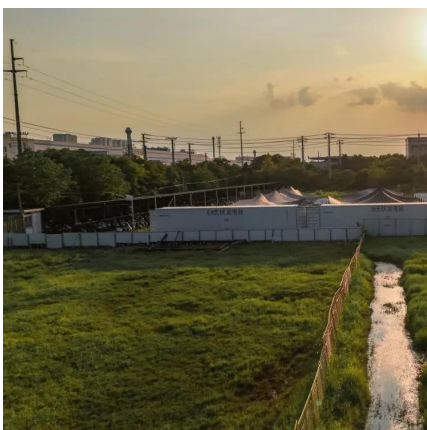
## How do you determine what size of inverter you will need to

You use gallons of gas per miles driven You use an amount of electricity (kw) per hour. So, with that analogy, kwh is your gas tank size (how big your battery is) and your inverter is the size of ...



## [What Size Inverter You Need \(Calculations + Battery\)](#)

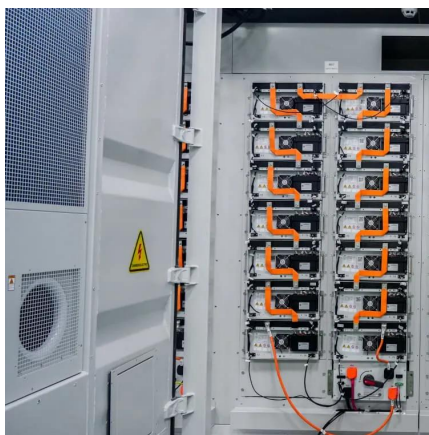
The size of the inverter required will be determined by the total wattage of the appliances you need to operate and the time they need to run. ...





## Choosing the Right Inverter: What Size Inverter Do I Need?

The size of the inverter you need depends on the total wattage requirements of the devices or appliances you want to power. To determine the appropriate size, you can calculate ...



## What Size Solar Inverter Do I Need?

The exact impact of your solar battery on inverter size depends on factors like battery capacity, inverter compatibility, and your specific energy usage patterns. It's best to ...

## Contact Us

---

For catalog requests, pricing, or partnerships, please visit:  
<https://www.bringmethehorizon.eu>