



SolarMax Pro Energy Storage Systems

How big a battery should I use for a 500W photovoltaic panel





Overview

A battery is paired with a solar panel to store energy. As solar panels produce electricity, it is stored in the battery so it can be used later when there is no sunlight available. The calculation formula is: Solar power watts / volts = amp hours
$$\text{Amp hour} \times \text{sun.}$$

The charging time depends on two factors, the sun hours and if the battery is empty or not. Here are some examples. A 500W solar system can.

There are a lot of options, but basically it comes down to flooded lead acid batteries, AGM and lithium. FLA batteries have a 50% discharge rate. For AGM batteries it is 60% to 70% and.

The other key is the number of sun hours available. In our examples we used 6 hours, but it can be 4, 5, 8 or 10 depending on your location. If we took the same solar panel but.

We have been focused on 12V solar panels since they are standard for RVs. But for home use, 24V is more commonly used. Check this.

With a 500 watt solar system, an AGM battery should be sufficient. A lithium battery will work, but there is nothing you won't be able to power than an AGM cannot. If you are going to expand the solar array to 1000 watts and higher, then you may consider lithium. How many batteries can a 500 watt solar panel charge?

A 500 watt solar panel can charge a 120ah deep cycle battery with 5 hours of sunlight. This is possible if the solar panel produces 25 to 27 amps an hour. One battery is paired with a solar panel to store energy.

What size battery should a 10 kW solar system have?

10 kW solar system with a battery — The ideal size solar battery for a 10 kWp solar panel system is 20–21 kW, as it'll be able to make sure the battery is properly charged throughout the day. Which solar products are you interested in?

.



What size solar battery do I Need?

The size of the solar battery you need will depend on the size of your home — specifically, how many bedrooms it has. To work out what size battery you'll need, you can start by calculating your electricity usage. Look at either your smart meter or your monthly energy bill, which will tell you how much you use on average.

Should I buy a lithium battery for a 500 watt solar system?

For a 500 watt solar system, an AGM battery is suitable. A lithium battery can also be used, but an AGM battery can handle the power requirements. If you plan to expand the solar array to 1000 watts and higher, then you may consider a lithium battery. An AGM battery is sufficient for a 500 watt solar system and cannot be bought in a 500 watt size.

What is a solar panel and Battery sizing calculator?

A Solar Panel and Battery Sizing Calculator is an invaluable tool designed to help you determine the optimal size of solar panels and batteries required to meet your energy needs. By inputting specific details about your energy consumption, this calculator provides tailored insights into the solar setup that will best suit your requirements.

How many amps can a 500-watt solar panel produce?

A 500-watt solar panel can produce 162 amps with 6 hours of sunlight. This calculation applies to any solar panel size. For instance, a 1000-watt solar array can produce 324 amps.



How big a battery should I use for a 500W photovoltaic panel



[Calculate Battery Size For Any Size Inverter \(Using ...](#)

To recharge your battery from time to time you would need the right size solar panel to do the job! Read the below article to find out the suitable ...

How big a battery should a 500w solar cell be equipped with

What Size Solar Charge Controller Do I Need The simplest method is to know the peak output power of the solar power system and the battery voltage. Let say if the power output of a solar ...



[How Many Batteries are Needed for a 100W, 500W ...](#)

A 500-watt Solar panel will require a 150Ah battery or a larger battery bank. You can also verify the size of the battery and find out the ...

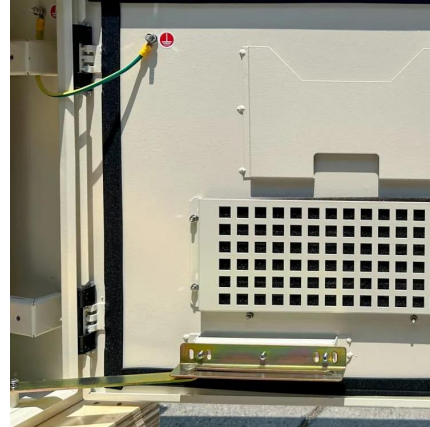


Solar Battery Size Calculator: What size battery do I ...

What size solar panel array do you need for your home? And if you're considering battery storage,



what solar battery size would be most ...



What size battery do I need for 500 watt solar panel?

Battery capacity You will need to select a battery large enough to store the power generated by the solar panels during the day and provide ...



How big a solar panel should I use for a 500w appliance

With a 500W solar panel, it may not be necessary to set up a large battery bank. If you are going to charge several batteries, you should increase the solar array capacity.



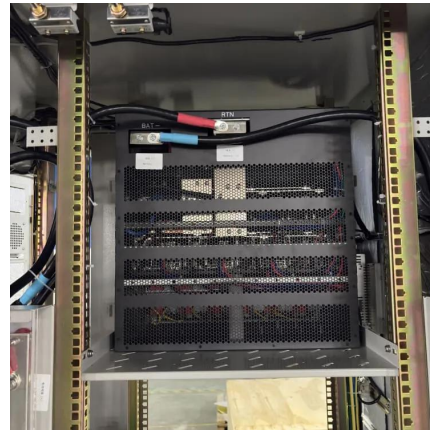
What Size Fuse for 400, 750, 1000, 1500, 2000, 3000-watt ...

Quick Answer The 400, 750, 1000, 1500, 2000, 3000 watt inverter would require 40A, 75A, 100A, 150A, 200A, 300A respectively. Remember that the size of the Fuse would also determine ...



Inverter Wire Size Calculator

Unsure how to connect your inverter and battery? Check The Inverter Store's handy calculator and guide that breaks down the complex process for you easily.



What Size Charge Controller for 500W Solar Panel? - ECGSOLAX

When setting up a 500W solar panel system, selecting the appropriate charge controller size is crucial for the efficient and safe operation of your setup. By calculating the ...

How big a battery should I use with a 90W photovoltaic panel

How big a battery should I use with a 90W photovoltaic panel What Size Solar Battery Do I Need? ? Guide (2024) For a solar photovoltaic (PV) system of 5 kW with a daily energy ...



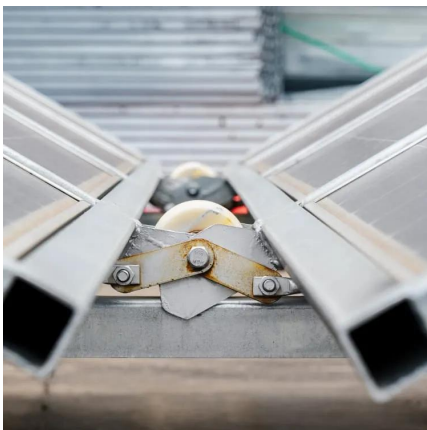
[What size battery do I need for 500 watt solar panel?](#)

Battery capacity You will need to select a battery large enough to store the power generated by the solar panels during the day and provide nighttime use when needed. ...



Wire size and fuse size for inverter conflicting information?

Hi there, I have a 500W inverter I am planning to power with 280aH array of 4 cells and a 100A BMS. Doing the basic calculation as follows 500W inverter max load/12V battery = ...



What Size Solar Battery Do I Need?

Choosing a battery size is more of an art than a science because it requires a balancing act between your goals, critical electricity needs, and budget.

[Solar Battery Bank Sizing Calculator for Off-Grid](#)

For example, 24 kWh = 500 amp hours at 48 volts -> $500 \text{ Ah} \times 48\text{V} = 24 \text{ kWh}$. It's usually a good idea to round up, to help cover inverter inefficiencies, voltage drop and other losses. Think of ...





Battery To Inverter Wire Size Calculator: What Size Wire From Battery

In this article, you'll find a tool that determines the wire size in AWG and mm² that you need to connect your battery to the inverter for you.

[Solar Battery Bank Sizing Calculator for Off-Grid](#)

For example, 24 kWh = 500 amp hours at 48 volts -> 500 Ah x 48V = 24 kWh. It's usually a good idea to round up, to help cover inverter inefficiencies, voltage ...



[What Size Solar Battery Do You Need? A 2025 Guide](#)

The size of the battery you need typically depends on how many bedrooms your home has, and how much electricity you use each month. It's generally better to buy an ...

Solar Battery Size Calculator: What size battery do I need?

What size solar panel array do you need for your home? And if you're considering battery storage, what solar battery size would be most appropriate? This article includes tables ...



Calculate Battery Size For Any Size Inverter (Using Our Calculator)

To recharge your battery from time to time you would need the right size solar panel to do the job! Read the below article to find out the suitable solar panel size for your battery bank



[What Size Solar Battery Do You Need? A 2025 Guide ...](#)

The size of the battery you need typically depends on how many bedrooms your home has, and how much electricity you use each month. It's ...



How Many Batteries are Needed for a 100W, 500W and 1000W Solar Panel?

A 500-watt Solar panel will require a 150Ah battery or a larger battery bank. You can also verify the size of the battery and find out the amperage using this formula:





Inverter Wire Sizing and Fuse : r/SolarDIY

I really just need to charge my laptop/camera/phone so I went with a cheap setup (33 AH deep cycle battery and lower wattage inverter). Which AWG size should I use to wire the inverter to ...



How Many Batteries For a 500 Watt Solar System?

With a 500 watt solar system, an AGM battery should be sufficient. A lithium battery will work, but there is nothing you won't be able to power than an AGM cannot.

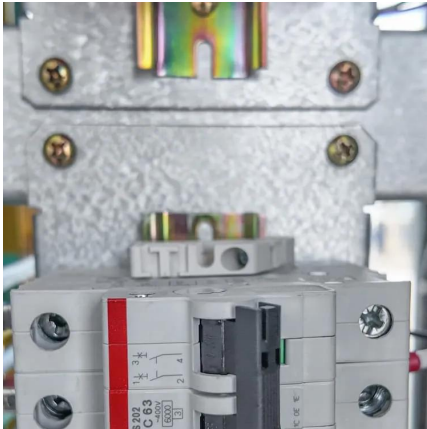
How Many Batteries for 500 Watt Solar System to Optimize ...

Wondering how many batteries you need for a 500-watt solar system? This comprehensive guide explores battery types, energy calculations, and factors influencing your ...



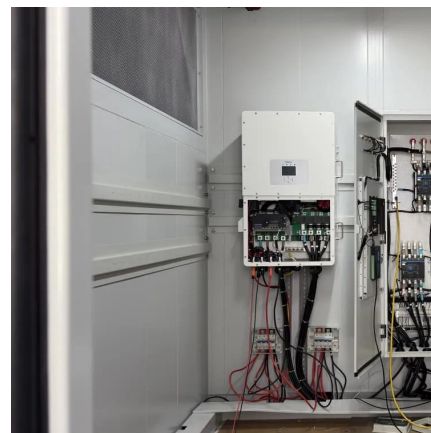
What Size Charge Controller For 500w Solar Panel: Everything ...

The truth is the size of the charge controller you need for a 500W solar panel depends on various factors, including your panel's voltage and current, as well as your ...



Solar Panel and Battery Sizing Calculator

Specify the solar panel wattage you plan to use. The result will estimate how many panels you need to meet your energy goals. Enter the battery storage capacity, allowing the ...



Contact Us

For catalog requests, pricing, or partnerships, please visit:
<https://www.bringmethehorizon.eu>