



SolarMax Pro Energy Storage Systems

How Site Energy Works





Overview

Site Energy is the first low-cost solution for large commercial buildings to track, measure, and validate the performance of building energy use, energy efficiency performance, and carbon emission reductions in real-time. The easiest real-time energy tracking solution for buildings. What is site energy?

You're probably already familiar with site energy, which is the amount of heat and electricity consumed by a building as reflected in your utility bills. Looking at site energy can help you understand how the energy use for an individual building has changed over time.

Why is site energy important?

Looking at site energy can help you understand how the energy use for an individual building has changed over time. Site energy may be delivered to a building in one of two forms: primary or secondary energy. Primary energy is the raw fuel that is burned to create heat and electricity, such as natural gas or fuel oil used in onsite generation.

What is the difference between source energy and site energy?

Source energy, on the other hand, takes into account the entire train of power from creation to distribution and through to the use of energy by the consumer, which we know as site energy. Source energy includes the site energy plus all of the energy used to provide and distribute the site energy.

What is a site energy measurement?

For buildings that purchase raw fuel (such as natural gas) and convert it to power on-site, a site energy measurement would account for the losses that occur during this conversion, because site energy is based on the fuel that is purchased.

Why is source energy less efficient than site energy?

The power generation, transmission, and delivery of source energy to the site



results in losses. As a result, source energy is nearly always less efficient than site energy. This is important to understand when considering how efficiently energy is consumed, as well as the emissions impacts of energy consumption.

What is a site energy score?

It incorporates all transmission, delivery, and production losses. By taking all energy use into account, the score provides a complete assessment of energy efficiency in a building. You're probably already familiar with site energy, which is the amount of heat and electricity consumed by a building as reflected in your utility bills.



How Site Energy Works



[How Energy Healing Works to Benefit the Body](#)

Healing energy is the therapeutic applications of subtle energies, meaning that it works to promote the human energy force and treat energetic ...

[What Is On-Site Power Generation, and How Does It ...](#)

Discover the benefits of on-site power generation, how it works, and why it's a smart investment for your business's energy efficiency and ...



[The Difference Between Source and Site Energy](#)

You're probably already familiar with site energy, which is the amount of heat and electricity consumed by a building as reflected in your utility bills. Looking at ...

[The Difference Between Source and Site Energy](#)

You're probably already familiar with site energy, which is the amount of heat and electricity



consumed by a building as reflected in your utility bills. Looking at site energy can help you ...

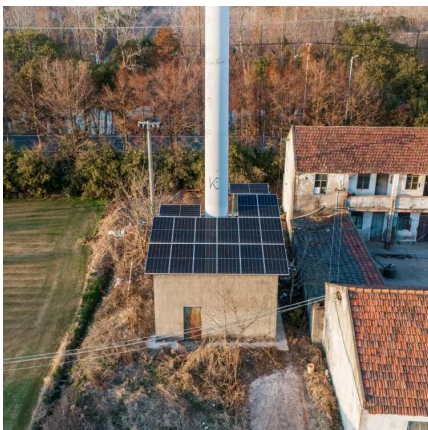


Hanford Site

The Hanford Site is a decommissioned nuclear production complex operated by the United States federal government on the Columbia River in Benton County in the U.S. state of Washington. ...

Clarifying the Confusing Calculations for Zero Energy ...

First, let's define these two terms. Site energy - This is the energy used on-site, as measured at the meter. For electricity, just look at the kilowatt ...



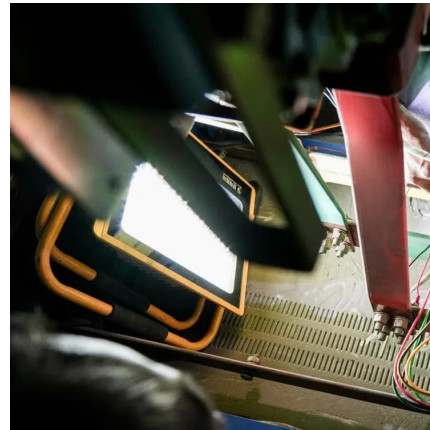
[BSD-151: Understanding Primary/Source and Site Energy](#)

The difference between site and source energy is a vital concept to understand when looking at the energy performance of buildings--failing to account for the difference will ...



Solar Energy 101: A Beginner's Guide

In this beginner-friendly guide, we'll explore how solar energy works, how it integrates into residential settings, its environmental benefits, and economic ...



Demystifying Site Energy: The Hidden Power Source in Your ...

Unlike distant power plants sending electricity through wobbly transmission lines, site energy systems operate like a self-sufficient kitchen, producing and consuming energy on-premises.

Site Energy , Accelerate Energy Lab

Site Energy is the first low-cost solution for large commercial buildings to track, measure, and validate the performance of building energy use, energy ...



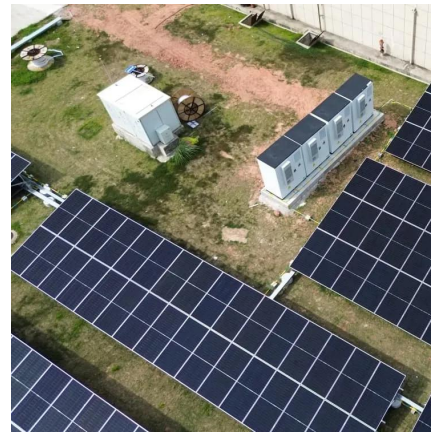
Careers at Xcel Energy

A leading energy provider, dedicated to excellence. We make energy work better for our customers, helping them thrive every day. That means always raising the bar - delivering ...



Site vs Source Energy

The difference between site and source energy is a vital concept to understand when looking at the energy performance of buildings--failing to account for the difference will ...

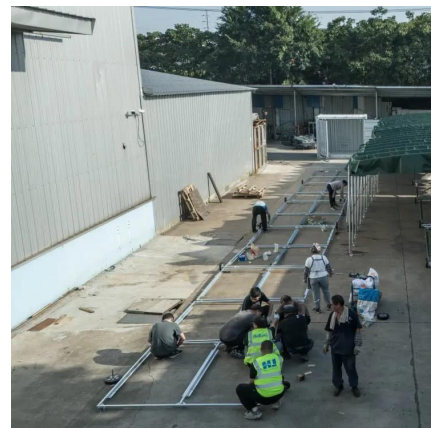


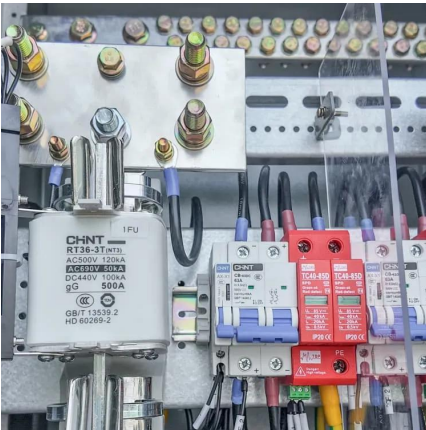
Site vs Source Energy

The key with site energy is that it focuses on the final use only. Source energy, on the other hand, takes into account the entire train of power from creation to distribution and ...

Site Energy , Accelerate Energy Lab

Site Energy is the first low-cost solution for large commercial buildings to track, measure, and validate the performance of building energy use, energy efficiency performance, and carbon ...



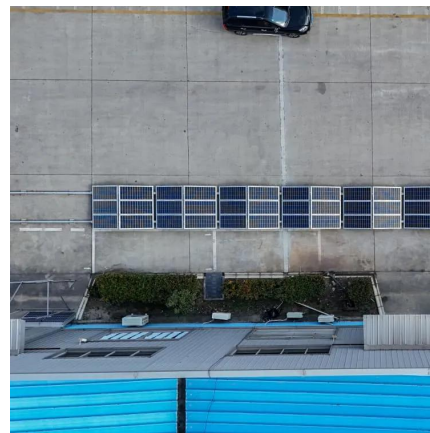


Measuring energy: site energy vs. source energy in ENERGY ...

For buildings that purchase raw fuel (such as natural gas) and convert it to power on-site, a site energy measurement would account for the losses that occur during this conversion, because ...

[How Does Solar Energy Work? , Solar Power Authority](#)

How Solar Energy Works Keep reading to learn what solar energy is, how solar panels work and how installing solar panels on your home saves you money.



Source vs. Site Energy Solutions

Site energy refers to the amount of energy metered at the point of use (e.g. consumed by a building). Site energy may refer to both primary energy (natural gas or fuel consumed on site) ...

[What Is On-Site Power Generation, and How Does It Work?](#)

Discover the benefits of on-site power generation, how it works, and why it's a smart investment for your business's energy efficiency and sustainability.



Clarifying the Confusing Calculations for Zero Energy Buildings

First, let's define these two terms. Site energy - This is the energy used on-site, as measured at the meter. For electricity, just look at the kilowatt-hours you get billed for. Source ...



[Renewable Energy Basics , Better Buildings Initiative](#)

What is renewable energy, how is it produced, and how can you maximize the benefits for your organization? Collecting resources from DOE's Renewable ...



Glossary

The amount of energy that enters a residential or commercial building. Includes the primary energy (natural gas, petroleum products, and renewable energy) and the electricity used in the ...





Wind Energy , Department of Energy

4 days ago · Wind power is the nation's largest source of renewable energy, with more than 150 gigawatts of wind energy installed across 42 U.S. States and ...



Contact Us

For catalog requests, pricing, or partnerships, please visit:
<https://www.bringmethehorizon.eu>