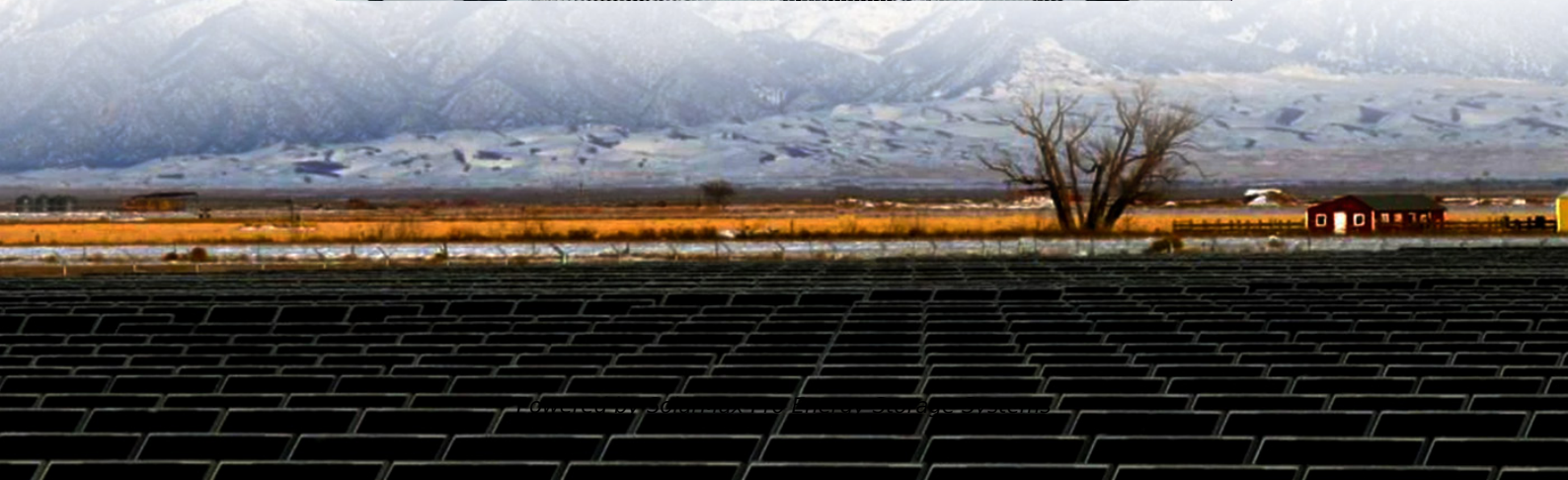
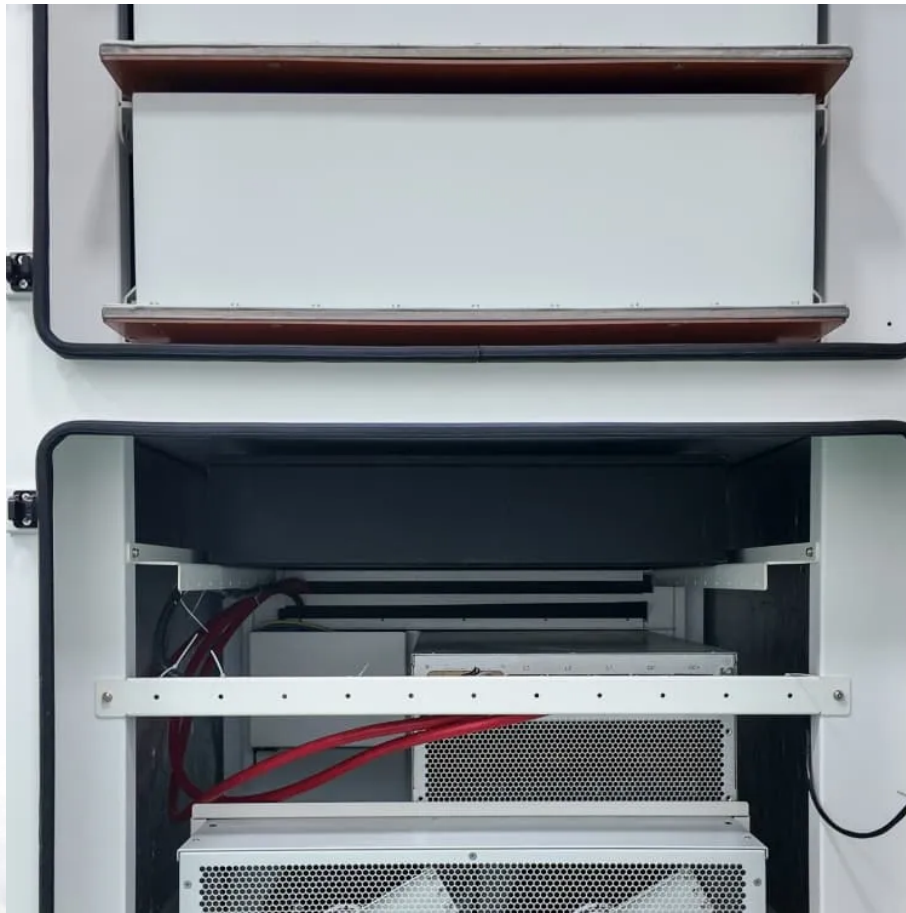




SolarMax Pro Energy Storage Systems

Fiji Communication Base Station Wind Power Equipment Processing Factory





Overview

What is the potential for a wind farm in Fiji?

Assessment of wind resource and energy potential for new onshore locations in Fiji. Three potential sites of Rakiraki, Nabouwalu and Udu identified. Sites have potential for future utility-scale wind-power development. Each site can accommodate a 10 MW wind farm using Vergnet 275-kW wind turbines.

Can wind resources be used for utility-scale wind-power development in Fiji?

This study summarizes an assessment of the wind resource at selected locations in Fiji for the potential of future utility-scale wind-power development. We use 2–8 years of near surface wind observations (2011–2018) from thirty automatic weather stations.

Does Fiji provide wind data for automatic weather stations?

Fiji Meteorological Services (FMS) provided wind data for all Automatic Weather Stations (AWSs) in Fiji, since their installation. This wind data is for periods of between 2 and 8 years from 2011 to 2018 for this study. Thirty AWSs average wind speed and wind direction datasets were recorded using mechanical anemometers and wind vanes.

How is electricity generated in Fiji?

Electricity generation in Fiji is from numerous sources including hydro, industrial diesel, heavy fuel oil, biomass and wind [6]. From the most recent statistics in 2018, these sources generated 1032.94 GWh of electricity in total with 59% (609 GWh) from renewable and 41% (423.7 GWh) from conventional power plants.

What type of wind does Fiji have?

In terms of wind, Fiji is in the region of southeasterly trade winds. The stable, regular breeze power the existing wind turbines. Additionally, Fijian coasts experience a strong diurnal cycle of land-sea breeze circulation. The Fiji



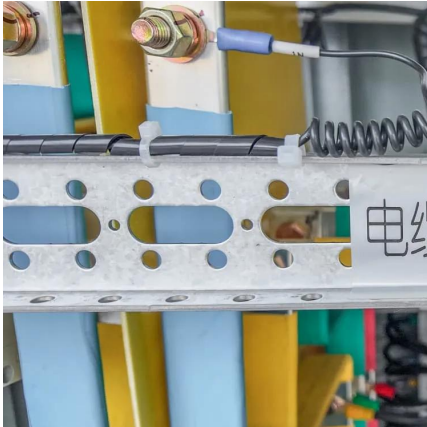
Department of Energy manages the off-grid electrification on the islands.

What is the average wind shear coefficient in Fiji?

Table 4. Mean wind shear coefficient at 30 locations in Fiji. The wind shear depends on the terrain type for each location that determines its roughness. A wind shear coefficient of $\alpha \leq 0.2$ is sufficient for normal wind turbine operation for all wind speed classes [25].



Fiji Communication Base Station Wind Power Equipment Processing



EFL: \$4.27billion required to develop generation and

Mr Patel said EFL carried out a review this year of its 10-year PDP up to 2031. He said the PDP was reviewed every two years and covered the master development program to ...

Xinjiang Wind Turbine Maker Gains Global Recognition

The factory, completed in 2022, is located in the Goldwind Dabancheng wind power equipment industrial base, Xinjiang's first zero ...



ECAV zbor v Sládkovičove

Vážení poslucháři! Hebrejské slovo 'beraka', poěhnanie, pochádza od slova 'barak', ktoré má viac významov. Znamená najmä poěhnávať a chváliť. Udeňovanie poěhnania patrilo v ...

Fiji Electricity Authority

The plant is situated at the headwaters of the Sigatoka River, where the Nukunuku and Qaliwana rivers join. It will be operated remotely



from FEA's National Control Centre.



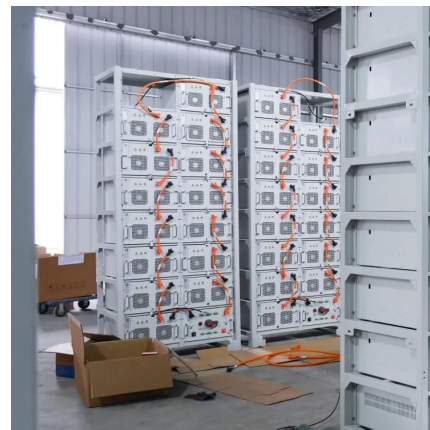
Fiji Electricity Authority

FEA operates two major thermal stations in Fiji in Vuda and Kinoya and six other smaller thermal stations on the island of Viti Levu, which all use fossil fuels. It also operates the Nagado Hydro ...



Wind Power Potential at Benau, Savusavu, Vanua Levu, Fiji

The wind assessment is based on 3 years wind speed and direction data provided by Fiji Department of Energy. The Wind energy potential was analyzed using Wind Atlas Analysis ...



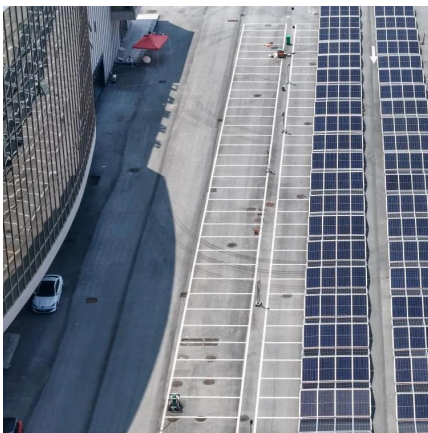
[EFL: \\$4.27billion required to develop generation and ...](#)

Mr Patel said EFL carried out a review this year of its 10-year PDP up to 2031. He said the PDP was reviewed every two years and covered the ...



Communication Network Architectures for Smart-Wind ...

Nevertheless, wind turbines are still blind machines because the control center is responsible for managing and controlling individual wind ...



Contact

Contact Us fiji Phone: (679) 331 4766 Fax: (679) 330 3748 Email: contact@cfl.fj PNG Phone: (675) 325 0275 Email: contact@pngfm.pg Send us an email Your Name (required) Your ...

Wind resource assessment and energy potential of selected locations in Fiji

Assessment of wind resource and energy potential for new onshore locations in Fiji. Three potential sites of Rakiraki, Nabouwalu and Udu identified. Sites have potential for future ...



[CBS Power Solutions \(Fiji\) Ltd , LinkedIn](#)

The project is providing 24/7 electricity using an enhanced storage battery system to three households which includes: (i) the dormitory to house the workers and also provide power ...



Modelling wind for Fiji's green future , New Zealand eScience

The WRF model solves the non-linear partial differential equations for the conservation of mass, momentum, energy and moisture phases to simulate the atmospheric parameters including ...



Solar Energy for Power Generation in Fiji: History, Barriers and

In order to obtain zero emissions from grid electricity sector and to have a diverse energy supply options, solar PV, hydropower, biomass power plant, wind farms and ...



Ten Year Power Development Plan - EFL

This report is organized such that it aligns with scope of work for each region i.e. VLIS, Vanua Levu, Ovalau and Taveuni power systems and covers the time frame from 2022 to 2031.

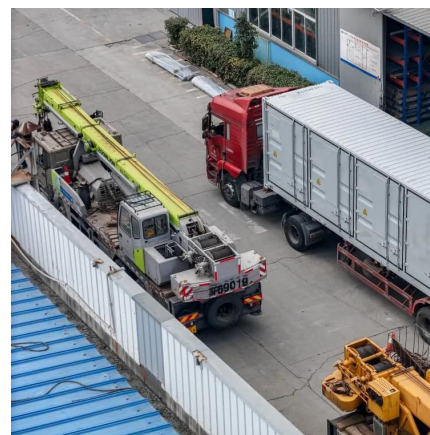


Fiji gets \$115 million for wind turbine projects - FBC News

"Our ultramodern wind turbines generate electricity using only 1 mile an hour of wind or more, up to 250 miles an hour. It still produces electricity; our wind turbines can ...

Modelling wind for Fiji's green future , New Zealand ...

The WRF model solves the non-linear partial differential equations for the conservation of mass, momentum, energy and moisture phases to simulate ...



CBS Power Solutions (Fiji) Ltd

The project is providing 24/7 electricity using an enhanced storage battery system to three households which includes: (i) the dormitory to house the workers and also provide power ...

Wind resource assessment and energy potential of selected ...

Assessment of wind resource and energy potential for new onshore locations in Fiji. Three potential sites of Rakiraki, Nabouwalu and Udu identified. Sites have potential for future ...



[Wind Energy Projects , Energy Fiji Limited](#)

This project was commissioned in 2008. With 37 Turbines (assuming average wind speeds of 5.47m/s) each generating a capacity of 275kW, for a combined ...



[Wind Energy Projects , Energy Fiji Limited](#)

The Butoni Wind Farm Wind Turbines at Butoni Wind Farm This project was commissioned in 2008. With 37 Turbines (assuming average wind speeds of ...



[Latest Wind Power Plant Projects in Fiji \(2025\)](#)

Search all the latest and upcoming wind farm projects, bids, RFPs, ICBs, tenders, government contracts, and awards in Fiji with our comprehensive online database.





Contact Us

For catalog requests, pricing, or partnerships, please visit:
<https://www.bringmethehorizon.eu>