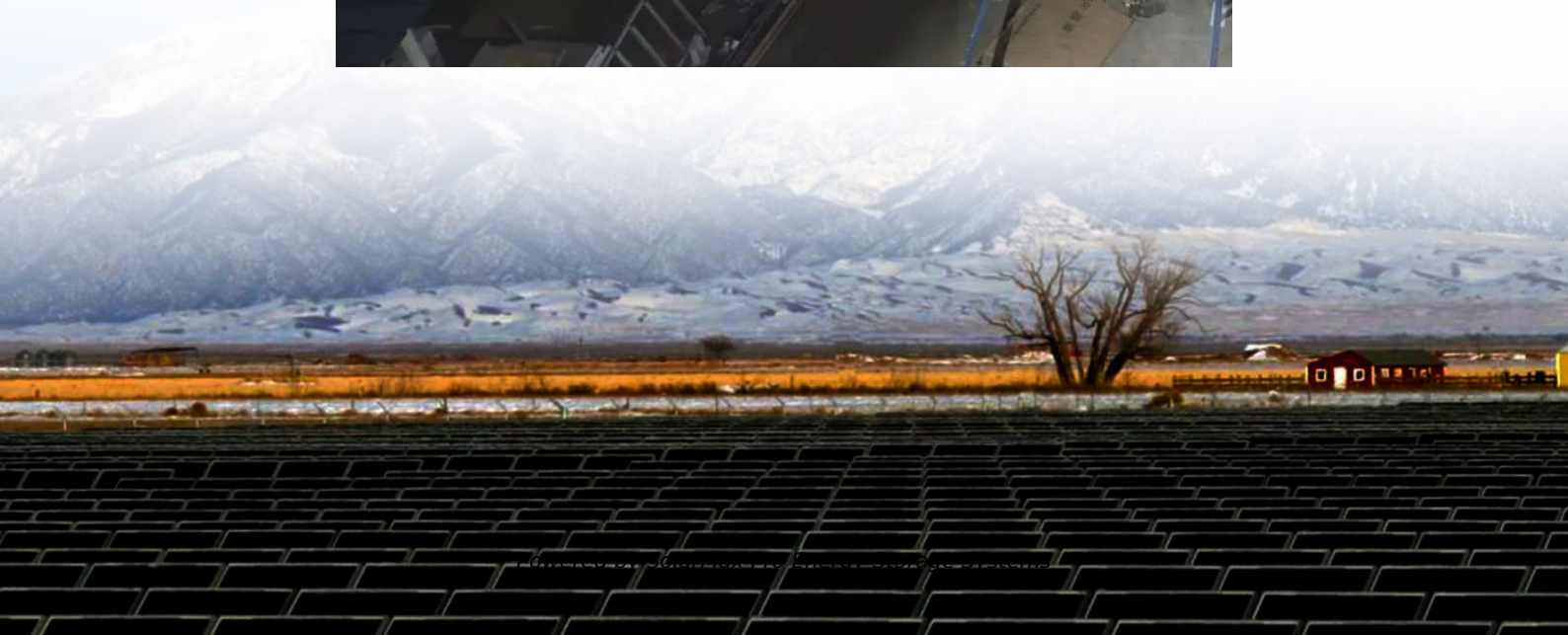


Does the inverter have anything to do with the battery size





Overview

So I have made it easy for you, use the calculator below to calculate the battery size for 200 watt, 300 watt, 500 watt, 1000 watt, 2000 watt, 3000 watt, 5000-watt inverter .

Note!The battery size will be based on running your inverter at its full capacity
Assumptions 1. Modified sine wave inverter efficiency: 85% 2. Pure sine wave inverter efficiency:90% 3. Lithium Battery:100% Depth of discharge limit 4. lead-acid.

To calculate the battery capacity for your inverter use this formula Inverter capacity (W)*Runtime (hrs)/solar system voltage = Battery Size*1.15 Multiply the result by 2 for lead-acid type.

You would need around 24v150Ah Lithium or 24v 300Ah Lead-acid Batteryto run a 3000-watt inverter for 1 hour at its full capacity .

Here's a battery size chart for any size inverter with 1 hour of load runtime
Note! The input voltage of the inverter should match the battery voltage. (For example 12v battery for 12v.

What is the difference between a battery and an inverter?

Inverters have a power rating in watts (W), which determines how much power they can supply, and the batteries have an amp-hour rating, which measures how much current (measured in Amps) they can supply for how long before they deplete. Inverters are made with different power capacities, depending on the size of the system you want to run.

What is the recommended battery size for an inverter?

Interpreting Results: Once you input the required data, the calculator will generate the recommended battery size in ampere-hours (Ah). For instance, if your power consumption is 500 watts, the usage time is 4 hours, and the inverter efficiency is 90%, the calculator might suggest a battery size of approximately 222 Ah.

Why should you use the calculate battery size for inverter calculator?



Using the Calculate Battery Size for Inverter Calculator can significantly streamline your power management process. This tool is particularly beneficial in scenarios where precise power estimation is critical, such as designing renewable energy systems, ensuring backup power in off-grid locations, or optimizing battery usage for cost efficiency.

Why should you choose an inverter?

Inverter Efficiency: Higher efficiency reduces energy loss and maximizes battery usage. **Power Requirements:** Match the inverter size to your peak and continuous power needs. Understanding the conversion between amp-hours and watt-hours is fundamental in managing energy storage and consumption.

How much battery should a 500 watt inverter use?

For instance, if your power consumption is 500 watts, the usage time is 4 hours, and the inverter efficiency is 90%, the calculator might suggest a battery size of approximately 222 Ah. **Practical Tips:** Ensure all input values are accurate to avoid skewed results.

Which Inverter should I Choose?

A 500VA inverter would be suitable, offering a balance between performance and battery life. For extended run times, consider larger inverters or additional batteries to meet higher power demands. **Inverter Efficiency:** Higher efficiency reduces energy loss and maximizes battery usage.



Does the inverter have anything to do with the battery size

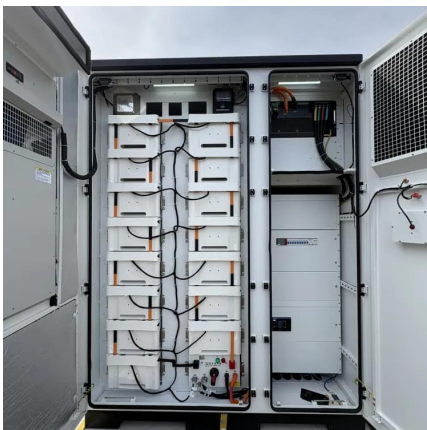


[How to Calculate Battery Size for Inverters of Any Size](#)

In order to size a battery bank, we take the hours needed to continuously run your inverter and multiply them by the number of watts the inverter is designed for. This equals the total watt ...

[Calculate Battery Size for Inverter Calculator](#)

By inputting critical parameters such as power consumption, inverter efficiency, and desired usage time, this calculator provides a precise battery size recommendation ...



Big inverters vs smaller inverters

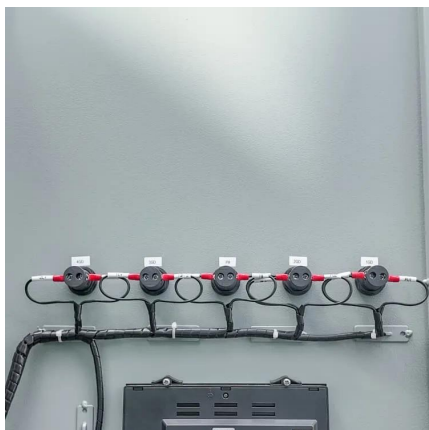
Generally, yes. Inverters have an idle power usage. A Victron 48/5000 burns 30W just by being powered on. That's 0.72kWh/day or 60Ah of 12V battery capacity - would kill a ...

How to Calculate Solar Panel, Battery, and Inverter Size

By accurately calculating your energy needs, desired backup time, and considering factors like



system efficiency and future expansion, you can ...



What Inverter Size is Best for a 100Ah Battery?

Understanding the Basics What is an Inverter? An inverter converts DC (Direct Current) power from your battery into AC (Alternating Current) power, which is used by most household ...

Solar Battery Size Guide: kWh, Inverter & Runtime

2 days ago · Size your solar battery using load profile, critical loads, efficiency and DoD. Calculator matches kWh, inverter and runtime for code-compliant installs.



Understanding Battery Capacity and Inverter Compatibility

In this guide, we will delve into the practical aspects of converting amp-hours to watt-hours, calculating battery run times, and determining the right inverter size, among other ...



How to Calculate Solar Panel, Battery, and Inverter Size

By accurately calculating your energy needs, desired backup time, and considering factors like system efficiency and future expansion, you can determine the appropriate sizes for your ...



[What Size Inverter You Need \(Calculations + Battery\)](#)

Inverters are made with different power capacities, depending on the size of the system you want to run. For this discussion, we are looking at a ...

[What Size Inverter do I Need? \[with Examples\]](#)

The size of the inverter that you need greatly depends on the anticipated usage. All the devices that you plan to run at the same time have to be added and then pick the inverter closest for ...



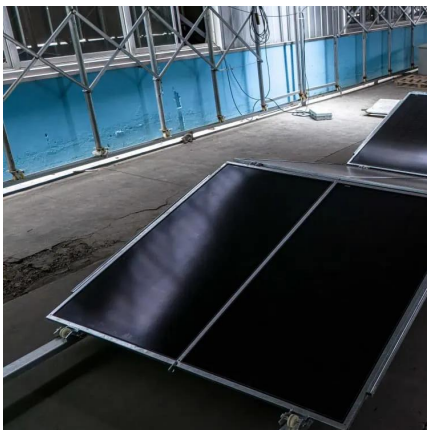
Calculate Battery Size For Any Size Inverter (Using Our Calculator)

So I have made it easy for you, use the calculator below to calculate the battery size for 200 watt, 300 watt, 500 watt, 1000 watt, 2000 watt, 3000 watt, 5000-watt inverter



Installing An Inverter: 3 Biggest Mistakes

Inverters when installed correctly will provide endless years of energy conversion providing the needed AC power for your appliances and electronics. Here are 3 of the biggest mistakes ...

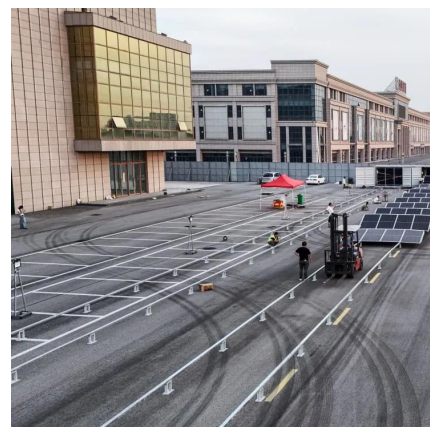


How To Size A Solar Inverter in 3 Easy Steps

Conclusion Choosing the right size solar inverter is crucial for the performance and efficiency of your solar system. By considering your power needs, the ...

How to Calculate the Right Inverter Battery Capacity ...

Learn how to calculate the right inverter battery capacity for your needs with a simple formula. Understand power requirements, efficiency ...





Quick confirmation on battery to inverter wire size and breaker

The manual says something about using a 3*2awg wire for the 12k inverter but does not seem to take in consideration anything about battery bank size. Just says at least ...

10 Important Facts To Know Before Installing an Inverter in Your ...

Learn about installing an inverter in your vehicle by reading this article. Read to also discover the best inverter for your vehicle-type.



Battery connection for inverter

The battery inverter won't turn on: If it is found that after battery connection for inverter the spent combination does not give signs of life, then it ...

How to Size a Hybrid Inverter for Your Home Energy Needs?

In this easy-to-understand guide, we break down everything you need to know about how to size a hybrid inverter, from analyzing your energy usage and solar panel size to future ...



[How Do I Match My Battery Size to My Inverter?](#)

Matching your battery size to your inverter is essential for ensuring efficient power usage and preventing system overloads. A well-sized battery will provide adequate energy for your ...



[Can an Inverter Be Too Big for Your Battery System?](#)

Match the inverter's continuous wattage rating to the battery's discharge capacity. For a 12V 200Ah battery (2.4kWh), a 2000W inverter is ideal. Formula: Inverter Wattage \leq (Battery ...



[What Size Inverter You Need \(Calculations + Battery\)](#)

Inverters are made with different power capacities, depending on the size of the system you want to run. For this discussion, we are looking at a domestic inverter that you can ...





Inverter Size Calculator

Learn how to calculate the required size of an inverter with our in-depth guide. We provide a handy formula, examples, and answers to common questions to help you make the right ...



[How does your inverter deal with ground.](#)

Folks, When setting up an inverter, one of the more important safety things to get correct is the grounding and the neutral-Ground bond. All of the inverters have a grounding lug ...

Contact Us

For catalog requests, pricing, or partnerships, please visit:
<https://www.bringmethehorizon.eu>