

# **Distance between photovoltaic panels and batteries**





## Overview

---

Optimal Distance Guidelines: Aim for a distance of up to 10 feet for minimal losses (under 2%), 10 to 20 feet for manageable losses (2-4%), and avoid distances over 20 feet to prevent significant performance degradation. What is the ideal distance between solar panels and batteries?

The ideal distance between solar panels and batteries is up to 10 feet. This distance helps keep energy losses minimal, typically below 2%. Keeping your setup within this range ensures optimal efficiency in your solar energy system. Why is the distance important in a solar energy system?

.

How does the distance between a solar panel and a battery affect power?

The distance between your solar panel and battery will affect how efficiently your system works. Longer wiring distances can cause voltage drop, which reduces the amount of power that reaches your batteries. The further the distance, the greater the voltage drop and loss of power.

How far away should a solar panel inverter be?

When considering the solar panel inverter distance, one of the first things to remember is how far your inverter and battery are from the main electrical panel. For example, placing your inverter and battery in a guest house 100 feet away from the main panel can affect your system's performance. Voltage Drop and Efficiency.

Do solar panels & batteries need to be far apart?

Solar optimized cable wires like the WindyNation 8 AWG will definitely help in case the panels and batteries have to be far apart. In RVs the solar panels are usually on the roof and the battery is inside the vehicle. There is only a few feet between them so energy loss is minimal.

How far should solar panels be from a car?



In RVs the solar panels are usually on the roof and the battery is inside the vehicle. There is only a few feet between them so energy loss is minimal. The 20-30 ft. distance is more important in homes, as the distance between the two can go beyond 30 feet. if the distance is greater than this, make sure you use high quality cable.

How do I install solar panels far from batteries?

To ensure optimal performance of your solar energy system, consider the following installation tips when placing solar panels far from batteries. Choosing the right cable gauge is crucial for long distances. Use thicker gauge wire, such as 10 or 12 AWG, to minimize voltage drop.



## Distance between photovoltaic panels and batteries

---

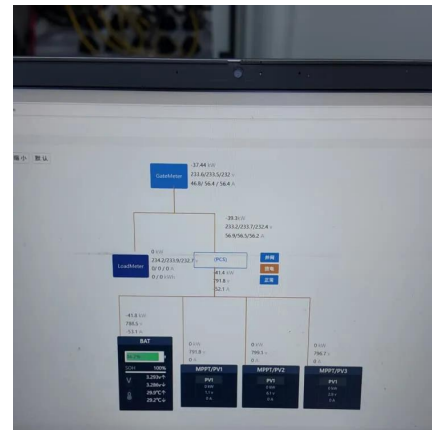


### Distance requirements between Solar Panels/Inverter, battery ...

What is the distance requirements between Solar Panels/Inverter, battery storage unit and consumer unit? My electrician insisted that the storage battery we have - Growatt B3 ...

### How to calculate inter-row spacing on ground or flat ...

Calculating inter row spacing between panel rows is very important. Its creating right balance between maximum power output and ...



### Distance requirements between Solar Panels/Inverter, ...

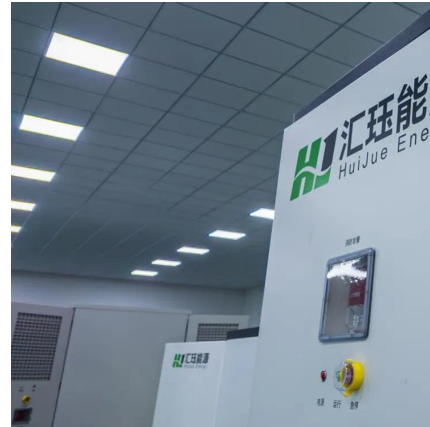
What is the distance requirements between Solar Panels/Inverter, battery storage unit and consumer unit? My electrician insisted that the ...

### How Far Can Solar Panels Be from Battery and Other Components?

It's generally recommended that the distance between your solar panels and your load,



whether that be your batteries or inverters, not exceed 30 meters. For more on this, ...



### [How Far Can Solar Panels Be from Battery and Other ...](#)

It's generally recommended that the distance between your solar panels and your load, whether that be your batteries or inverters, not exceed ...



### **How Far Can I Run My Solar Panel Cables & And the Battery**

The distance between your solar panel and battery will affect how efficiently your system works. Longer wiring distances can cause voltage drop, which reduces the amount of ...



### [How far away can solar panels be from inverter?](#)

The distance between solar panels and the inverter in a photovoltaic (PV) system can vary depending on factors such as system design, cable length limitations, and electrical ...







## How Far Can Solar Panels Be from Battery and Other ...

Solar power is a clean, renewable energy source that is becoming increasingly popular for both residential and commercial applications. ...



## **The distance requirement between photovoltaic panels and ...**

How does the distance between a solar panel and a battery affect power? The distance between your solar panel and battery will affect how efficiently your system works. Longer wiring ...

## **Solar Panel Inverter Distance: How Far Can They Be from Your ...**

In conclusion, managing your solar panel inverter distance by storing the inverter and battery in a guest house and running the lines to the main panel over 100 feet is practical.



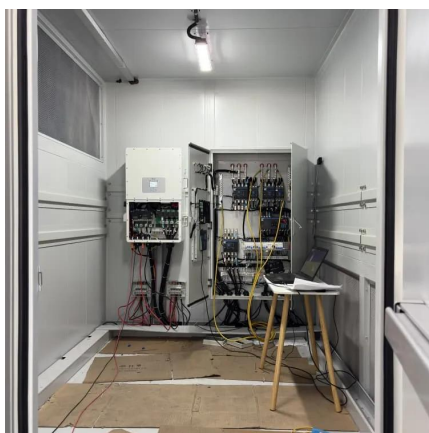
## **Solar Panels And Battery Distance: Key Factors For Optimal ...**

The optimal distance between solar panels and batteries refers to the ideal length of electrical wiring that connects solar energy systems to energy storage. This distance impacts ...



## How to Calculate the Ideal Solar Panel Setup for a 300Ah Battery ...

Learn to calculate the ideal solar panel setup for a 300Ah battery bank based on voltage, usage, sun hours, and efficiency for reliable off-grid power.

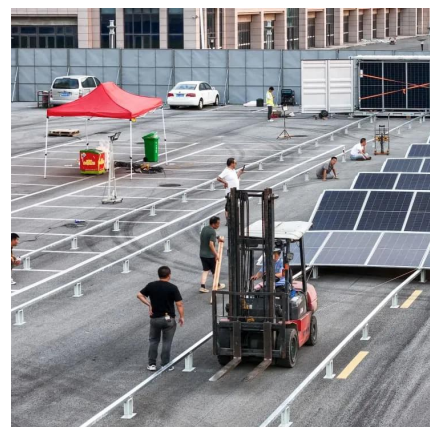


## Solar panel inclination angle, location and orientation

Optimization of the inclination, orientation and location of photovoltaic solar panels and solar collectors in a solar installation to ...

## Ground Mounted Solar Panels: How Far Is Too Far

Ground Mounted Solar Panels. Explore the factors that influence panel performance, such as energy loss and shading issues. Learn how to optimize ...





### [How Far Can Batteries Be From Solar Panels?](#)

The distance between solar panels and batteries significantly impacts the efficiency of your solar energy system. It is recommended to keep the distance as short as ...

### **Best location for solar battery , Deep dive into suitable ...**

Best location for solar battery , Deep dive into suitable locations for your safety Find out where the best place to put your solar battery. Also find out where ...



### [How Far Can I Run My Solar Panel Cables & And the ...](#)

The distance between your solar panel and battery will affect how efficiently your system works. Longer wiring distances can cause voltage drop, ...

### **How to Calculate the Minimum Distance Between PV Panels?**

Understand the importance of minimum installation distance for solar panels, calculation methods, and relevant regulations to ensure efficient operation and compliance of solar energy systems.





### [How to Calculate the Minimum Distance Between PV ...](#)

Understand the importance of minimum installation distance for solar panels, calculation methods, and relevant regulations to ensure efficient operation and ...



### **Guide to the Right Distance between Solar Panels and Battery**

The optimal distance between solar panels and batteries refers to the ideal length of electrical wiring that connects solar energy systems to energy storage. This distance impacts ...



### **How Far Can Solar Panels Be from Battery to Maximize ...**

Discover how the distance between solar panels and batteries affects the efficiency of your solar energy system. This article offers essential guidelines for optimal ...





## Solar Panel Distance (Battery + Charge Controller)

Generally, 20-30 feet is the ideal distance between a solar panel, such as an array, and the solar battery backup supply. The longer the wire ...



## **Safe Living Distance from a Solar Farm , US Light Energy**

Understanding Solar Farms: Solar farms, also known as solar power plants or solar arrays, are large-scale installations that capture sunlight and convert it into electricity ...

## **Guide to the Right Distance between Solar Panels and Battery**

The distance between solar panels and battery can make or break a setup. Use these charts to properly configure your solar panel system.



## **Solar Panel Distance (Battery + Charge Controller + Inverter/House)**

Generally, 20-30 feet is the ideal distance between a solar panel, such as an array, and the solar battery backup supply. The longer the wire from the solar panel to the battery, ...



## Contact Us

---

For catalog requests, pricing, or partnerships, please visit:  
<https://www.bringmethehorizon.eu>