



**SolarMax Pro Energy Storage Systems**

# **Communication transmission base station equipment**





## Overview

---

A base transceiver station (BTS) or a baseband unit (BBU) is a piece of equipment that facilitates wireless communication between user equipment (UE) and a network. UEs are devices like mobile phones (handsets), WLL phones, computers with wireless Internet connectivity, or antennas mounted on.

A BTS is usually composed of: Transceiver (TRX) Provides transmission and reception of signals. It also does sending and reception of signals to and from higher network entities (like the base station controller in.

Diversity techniques To improve the quality of the received signal, often two receiving antennas are used, placed at a distance equal to an odd multiple of a quarter of the.



## Communication transmission base station equipment

---



### What is a base station?

In telecommunications, a base station is a fixed transceiver that is the main communication point for one or more wireless mobile client devices. A base station serves as ...

### Base transceiver station

A base transceiver station (BTS) or a baseband unit[1] (BBU) is a piece of equipment that facilitates wireless communication between user equipment (UE) and a network.



### Setting Up a Base Station CB Radio for Long Range Communication

Learn to set up a base station CB radio for long-range communication. Explore key components and expert tips for clear, reliable signals.

### [Base Transceiver Station: Core Functionality Explained](#)

With the start of 2G like GSM and CDMA, things got better. These systems improved signal

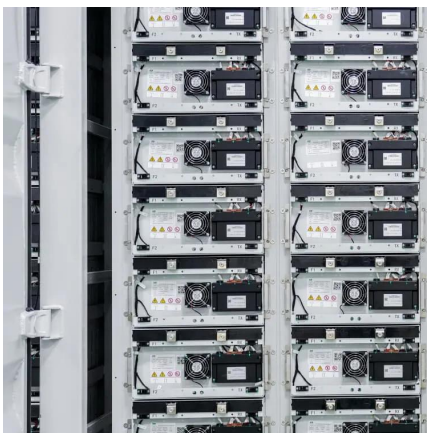


handling and coverage. Then 3G came along with technologies like W-CDMA ...



## Design of Wireless Communication Base Station Monitoring ...

With the rapid popularization of the network, under the increasingly complex network security situation and the increasingly prominent network security problems, network security ...



## Understanding the Basics: What is a Base Transceiver Station?

At its core, a BTS is the equipment that facilitates wireless communication between the mobile network and your phone. This piece of technology is the backbone of ...



## What Is A Base Station?

A base station is a piece of equipment that facilitates wireless communication between devices and a network. It contains the necessary hardware and software to transmit ...







## base station transceiver

A Base Station Transceiver (BST) is a key component in mobile communication networks, specifically in the context of cellular systems. It plays a crucial role in facilitating ...



## 4 types of Base stations

Micro base stations can enhance the quality and stability of wireless signals and provide higher data transmission speeds and lower latency. Pico Base Station A picocell is a smaller base ...

## Base Transceiver Station

A base station system consists of a collection of equipment (transceivers, controllers, etc.), for communicating with MTs in a certain area. A BSS has one base station controller (BSC), and ...



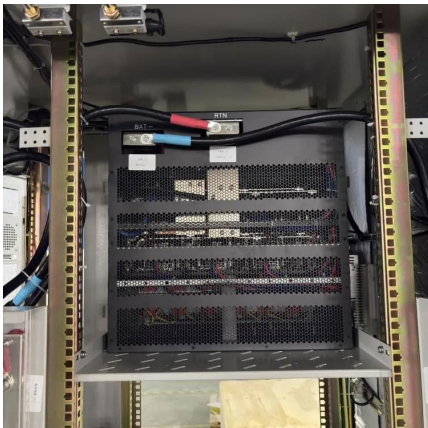
## Types and Applications of Mobile Communication ...

A macro base station refers to a wireless signal transmitting base station of a communication operator. A macro base station has a large ...



### Base Station Backhaul Microwave Solution , Huawei ...

Wireless base stations are widely distributed, and the backhaul network requires high quality. The wired transmission of base stations requires high ...



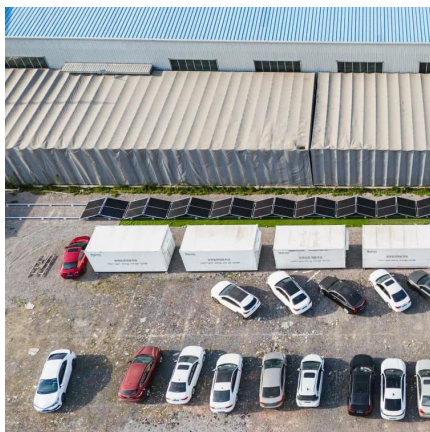
### **base transceiver station components**

A Base Transceiver Station (BTS) is a fundamental component of a mobile cellular network, responsible for establishing a communication link with mobile devices in its coverage ...

### **What is a 5G base station?**

A 5G Base Station, also Known as A GNB (Next-Generation NodeB), is a fundamental component of the fifth-generation (5G) Wireless Network Infrastructure. It serves ...



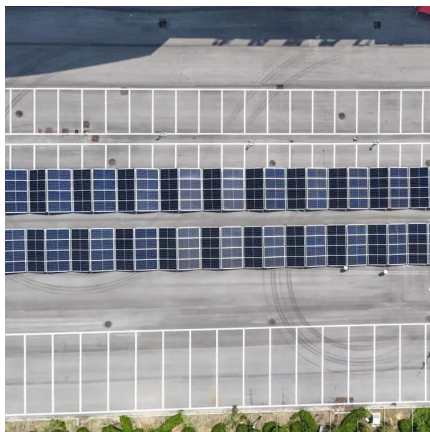


## Base Transceiver Stations (BTS)

What is a Base Transceiver Station? A Base Transceiver Station, commonly known as BTS, is a critical piece of equipment in wireless communication networks.

### Base Transceiver Station

Base Transceiver Station (BTS) The BTS is a telecoms infrastructure used to facilitate wireless communication between subscriber device and telecoms operator network. The subscriber ...



### KR-100972132-B1

The present invention relates to a terminal 102 and a base station 101 (e.g., UMTS) and communication equipment 111 that also transmits data to the terminal and is not provided with ...

### Guide to Base Station Communications Equipment , Office of ...

The guide then describes basic equipment needed in a base station: a transceiver (transmitter and receiver), a control device, microphone and speaker, a transmission line, and an antenna.



## **Types and Applications of Mobile Communication Base Stations**

A macro base station refers to a wireless signal transmitting base station of a communication operator. A macro base station has a large coverage distance, generally 35 ...

## **Contact Us**

For catalog requests, pricing, or partnerships, please visit:  
<https://www.bringmethehorizon.eu>