



SolarMax Pro Energy Storage Systems

Communication base stations and wind power are not compatible Reasons for capacity





Overview

Do base station antennas reduce tower weight & wind load issues?

Performance factors aside, antennas with better frontal loading design and lesser weight will decrease overall tower weight and wind load issues. Base station antennas add load to the towers not only due to their mass, but also in the form of additional dynamic loading caused by the wind.

Why do wireless operators use wind load data?

That's why wireless operators often use wind load data presented by base station antenna manufacturers when deciding on which antennas to deploy. Therefore, it is important for operators and tower owners to fully understand how wind load data is calculated so fair comparisons can be made between various antennas.

Why are wireless towers being pushed to the limits?

As wireless services continue to soar, providers are deploying more and more base station antennas, fiber connections and other equipment in order to meet the growing demand. The result is towers, support structures and mounts being pushed to the limits of their load capacity.

Why do we need more base station antennas?

. 12EXECUTIVE SUMMARYMacro Sites: Pushing the limits of wind loadingAs the appetite for data continues to grow, wireless providers need to deploy more and more base station antennas to keep pace and deliver the required capacity. With 5G roll outs gathering momentum, we are seeing existing.

Why is weight and wind load a major concern today?

Throughout this evolution, a major concern has been weight and wind load. It's a particularly urgent concern today for several reasons. As wireless services continue to soar, providers are deploying more and more base station antennas, fiber connections and other equipment in order to meet the growing



demand.

How does antenna choice affect a tower load?

Deploying more and more antennas in order to meet growing demand only results in antenna towers and support structures being pushed to the limits of their load capacity. As you look at modernizing your network, it is important to understand the impact your antenna choice has on the overall tower load.



Communication base stations and wind power are not compatible R



Application of wind solar complementary power generation ...

At present, many domestic islands, mountains and other places are far away from the power grid, but due to the communication needs of local tourism, fishery, navigation and ...

Energy Management for a New Power System ...

The total power of the instantaneous communication equipment is evaluated from the standby generator screen (power generated), throughout ...



Base Station Antennas: Pushing the Limits of Wind Loading ...

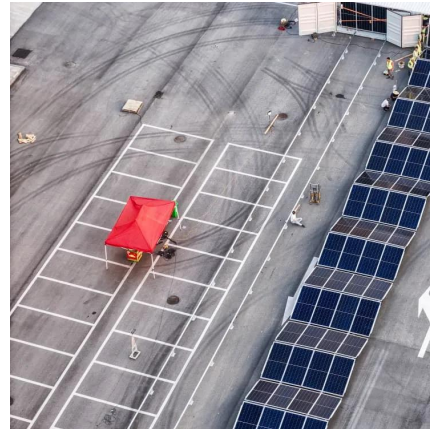
To date, one of the biggest limitations for equipment designers has been that the standards used by civil engineers to design towers and supporting structures (EN1991-1-4 / TIA222) do not ...

Optimization of Communication Base Station Battery ...

Ma et al. [19] also considered the issue of battery energy configuration for 5G base



stations, proposed that communication base stations can transfer demand to each other, and ...



Installation and commissioning of energy storage for ...

The communication base station backup power supply has a huge demand for energy storage batteries, which is in line with the characteristics of large-scale use of the battery by the ladder, ...



Solar Powered Cellular Base Stations: Current ...

Cellular base stations powered by renewable energy sources such as solar power have emerged as one of the promising solutions to these issues.



Measurements and Modelling of Base Station Power Consumption under Real

The possibility of installing photovoltaic panels and wind turbines on the base station sites is also being investigated. Even combining these two renewable energy sources can lead to a ...





Optimal configuration for photovoltaic storage system capacity in ...

Base station operators deploy a large number of distributed photovoltaics to solve the problems of high energy consumption and high electricity costs of 5G base stations. In this ...



Optimised configuration of multi-energy systems considering the

Before considering the flexibility quota mechanism, communication base stations must utilise their low-cost power-generation advantages to sell electricity to the grid as much ...

Technical Keys to Successful Network Modernization: ...

As wireless services continue to soar, providers are deploying more and more base station antennas, fiber connections and other equipment in order to meet the growing demand. The ...



The Role of Hybrid Energy Systems in Powering ...

Discover how hybrid energy systems, combining solar, wind, and battery storage, are transforming telecom base station power, reducing costs, ...



[Base Stations and Cell Towers: The Pillars of Mobile ...](#)

Base stations and cell towers are critical components of cellular communication systems, serving as the infrastructure that supports seamless ...



[Communication tower foundation selection and design](#)

0 Introduction The communication tower is a tall structure equipped with communication antennas. It is characterized by a tall structure and a ...

[Optimization of Communication Base Station Battery ...](#)

In the communication power supply field, base station interruptions may occur due to sudden natural disasters or unstable power supplies. This work studies the optimization of ...





Collaborative optimization of distribution network and 5G base stations

In this paper, a distributed collaborative optimization approach is proposed for power distribution and communication networks with 5G base stations. Firstly, the model of 5G ...

Application of wind solar complementary power ...

At present, many domestic islands, mountains and other places are far away from the power grid, but due to the communication needs of local ...



The Role of Hybrid Energy Systems in Powering Telecom Base Stations

Discover how hybrid energy systems, combining solar, wind, and battery storage, are transforming telecom base station power, reducing costs, and boosting sustainability.

Energy-Efficient Base Stations , part of Green Communications

This chapter aims a providing a survey on the Base Stations functions and architectures, their energy consumption at component level, their possible improvements and the major problems

...



[\(PDF\) Design of Solar System for LTE Networks](#)

Rapid growth in mobile networks and the increase of the number of cellular base stations requires more energy sources, but the traditional ...



How to make wind solar hybrid systems for telecom stations?

At present, wind and solar hybrid power supply systems require higher requirements for base station power. To implement new energy development, our team will continue to conduct ...



Exploiting Wind Turbine-Mounted Base Stations to Enhance ...

We investigate the use of wind turbine-mounted base stations (WTBSs) as a cost-effective solution for regions with high wind energy potential, since it could replace or even outperform ...





Contact Us

For catalog requests, pricing, or partnerships, please visit:
<https://www.bringmethehorizon.eu>